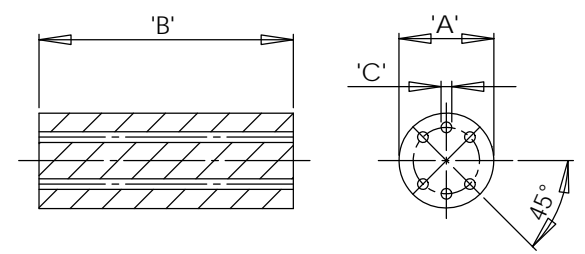
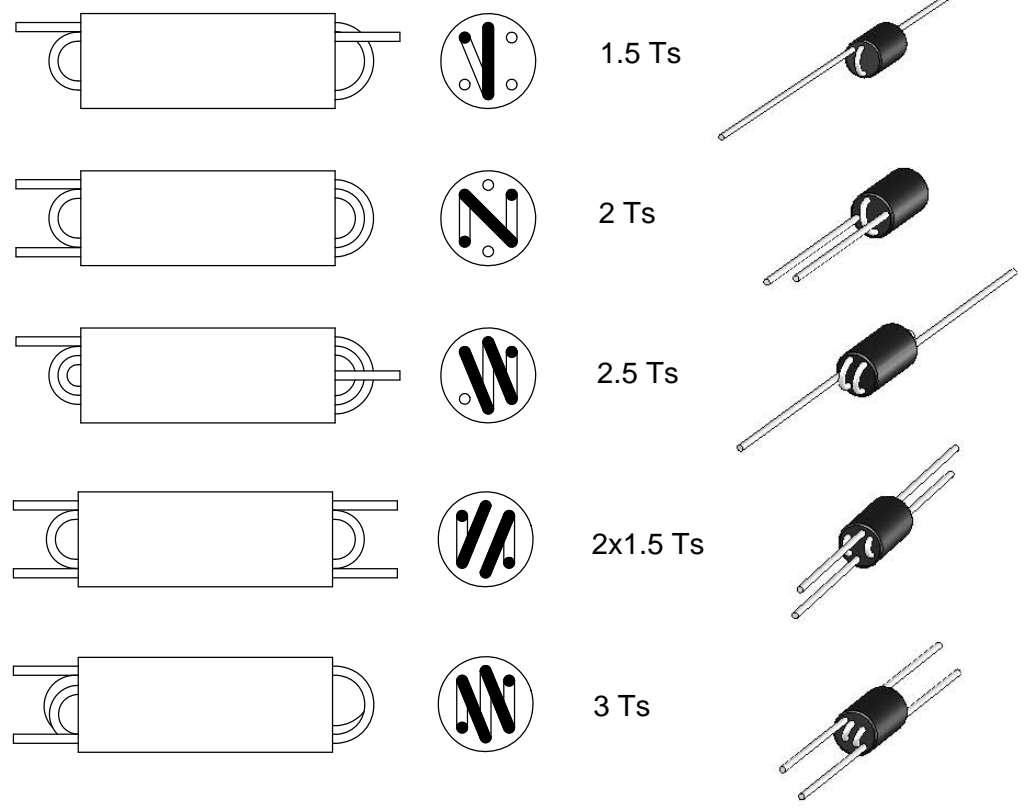


REV.	MODIFICATION.	DATE	DRN
01	NEW DRAWING	08/08/06	NJB
02	CO2010985	01/10/10	SF
03	CO2011038	14/01/11	SF



- NOTES.
- 1) See drawing 06-087 sheet 2 of 2 for Impedance graphs.
 - 2) Impedance figures are typical values.
 - 3) other sizes available by special order.
 - 4) Packaging information is only a guide & subject to variation.

Ferrite Material: K5B - A6 RMS-303 • Glue RMS-301 • Wires RMS-306							
RRH6 & RRH8	A (mm)	B (mm)	C (mm)	IMPEDANCE(Ω)		Standard Pack (Pieces)	Number of Turns
				25MHz	100MHz		
RRH6-1-15-K5B	6.00	10.00	0.85	390	460	500	1.5
RRH6-1-20-K5B	6.00	10.00	0.85	510	580	500	2
RRH6-1-20-A6							
RRH6-1-25-K5B	6.00	10.00	0.85	690	680	500	2.5
RRH6-2-15-K5B	6.00	10.00	0.85	340	450	500	2x1.5
RRH6-1-30-K5B	6.00	10.00	0.85	860	750	500	3

INFORMATION CONTAINED IN THIS DOCUMENT IS CONFIDENTIAL TO RICHCO INTERNATIONAL Co. Ltd. AND MAY NOT BE DISCLOSED OR REPRODUCED IN WHOLE OR PART WITHOUT THEIR WRITTEN CONSENT.

RICHCO, INC.
WWW.RICHCO-INC.COM

ALL DIMENSIONS IN MM
GENERAL TOLERANCES ±0.25
UNLESS OTHERWISE STATED
1 DECIMAL PLACE ±
2 DECIMAL PLACES ±
ANGULAR ±1°

THIRD ANGLE

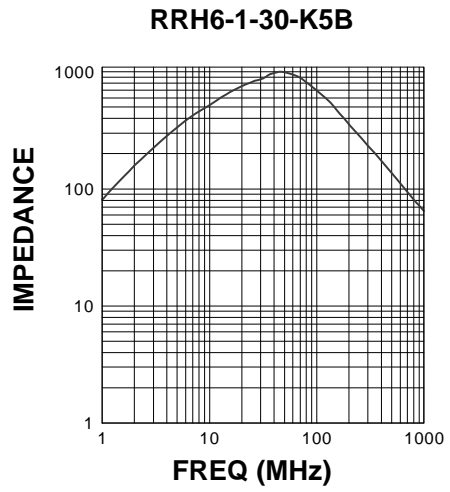
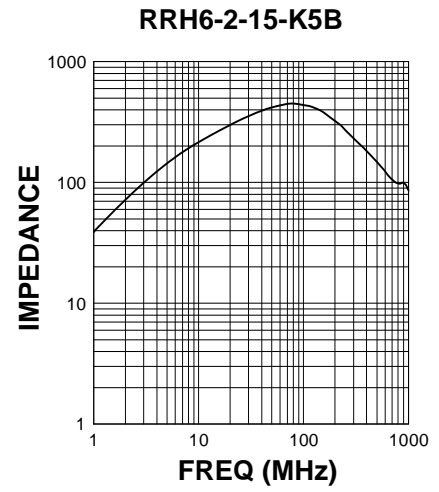
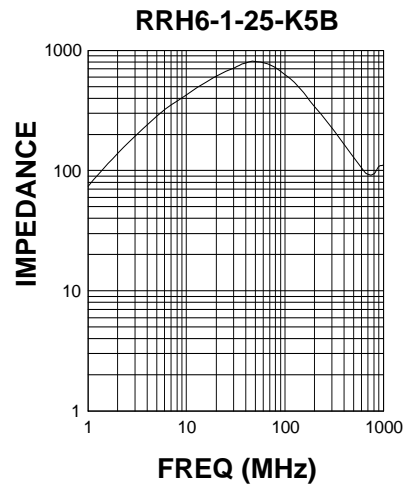
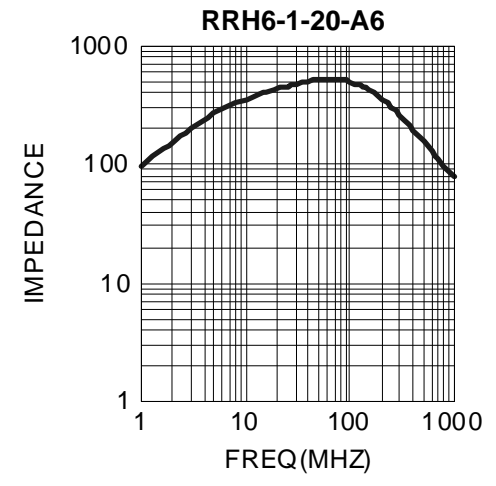
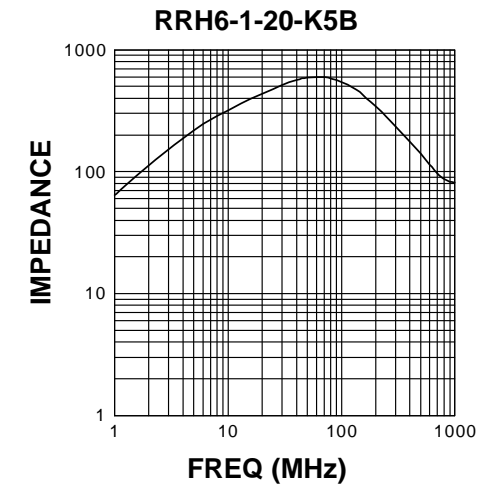
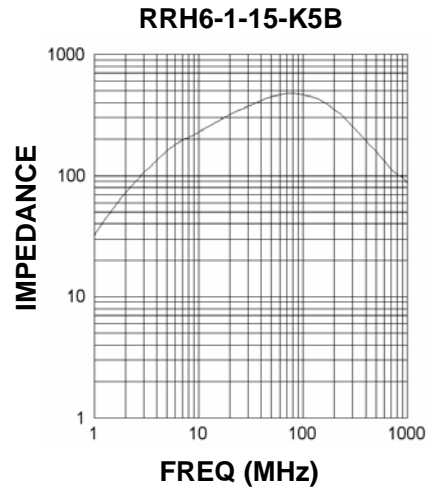
MATERIAL: See Table COLOUR: See Table

DESCRIPTION: RRH6 Ferrite Wound Beads PART No: See Table

DRG No: 06-087 NPR No: Mass:(g) SHEET SIZE A3

DRN DATE CHKD DATE SCALE SHEET No.
NJB 08/08/06 AS 08/08/06 NTS 1 OF 2

REV.	MODIFICATION.	DATE	DRN
01	NEW DRAWING	08/08/06	NJB
02	CO2010985	01/10/10	SF
03	CO2011038	14/01/11	SF



NOTES.
1) Impedance figures are typical values.

INFORMATION CONTAINED IN THIS DOCUMENT IS CONFIDENTIAL TO RICHCO INTERNATIONAL Co. Ltd. AND MAY NOT BE DISCLOSED OR REPRODUCED IN WHOLE OR PART WITHOUT THEIR WRITTEN CONSENT.

RICHCO, INC.
WWW.RICHCO-INC.COM

DESCRIPTION:
RRH6 Ferrite Wound Beads, Impedance Graphs.

DRG No. 06-087	SHEET SIZE A3		
DRN NJB	DATE 08/08/06	CHKD AS	SCALE NTS
DATE 08/08/06		SHEET No. 2 OF 2	

X-ON Electronics

Largest Supplier of Electrical and Electronic Components

Click to view similar products for [Multilayer Ceramic Capacitors MLCC - SMD/SMT](#) category:

Click to view products by [Richeo](#) manufacturer:

Other Similar products are found below :

[M39014/01-1467](#) [M39014/02-1218V](#) [M39014/02-1225V](#) [M39014/02-1262V](#) [M39014/02-1301](#) [M39014/22-0631](#) [1210J5000102JCT](#)
[1210J2K00102KXT](#) [1210J5000103KXT](#) [1210J5000223KXT](#) [D55342E07B379BR-TR](#) [D55342E07B523DR-T/R](#) [1812J1K00103KXT](#)
[1812J1K00473KXT](#) [1812J2K00680JCT](#) [1812J4K00102MXT](#) [1812J5000102JCT](#) [1812J5000103JCT](#) [1812J5000682JCT](#) [NIN-FB391JTRF](#)
[NIN-FC2R7JTRF](#) [NPIS27H102MTRF](#) [C1206C101J1GAC](#) [C1608C0G1E472JT000N](#) [C2012C0G2A472J](#) [2220J2K00101JCT](#)
[KHC201E225M76N0T00](#) [LRC-LRF1206LF-01R025FTR1K](#) [1812J1K00222JCT](#) [1812J2K00102KXT](#) [1812J2K00222KXT](#)
[1812J2K00472KXT](#) [2-1622820-7-CUT-TAPE](#) [2220J3K00102KXT](#) [2225J2500824KXT](#) [CCR07CG103KM](#) [CGA2B2C0G1H010C](#)
[CGA2B2C0G1H040C](#) [CGA2B2C0G1H050C](#) [CGA2B2C0G1H060D](#) [CGA2B2C0G1H070D](#) [CGA2B2C0G1H151J](#) [CGA2B2C0G1H1R5C](#)
[CGA2B2C0G1H2R2C](#) [CGA2B2C0G1H3R3C](#) [CGA2B2C0G1H680J](#) [CGA2B2C0G1H6R8D](#) [CGA2B2X8R1H221K](#) [CGA2B2X8R1H472K](#)
[CGA3E1X7R1C474K](#)