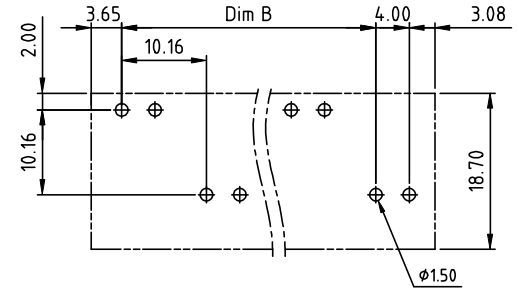
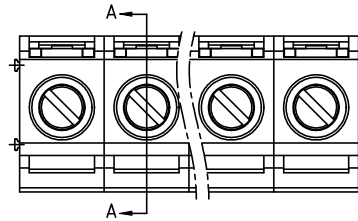
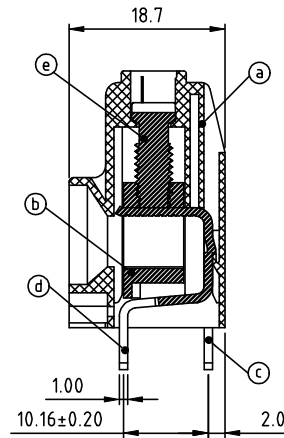
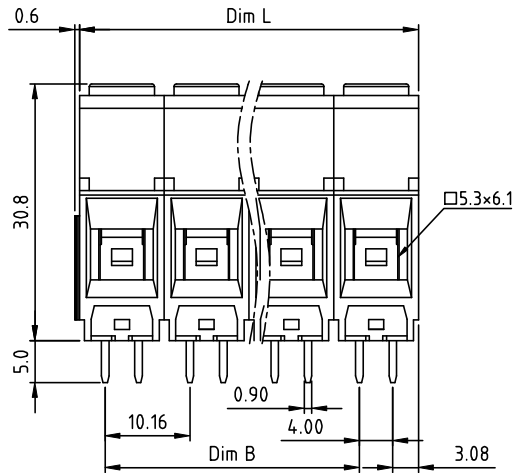




PRODUCT NUMBER	PITCH
KPxx21x000J0G	10.16 mm



RECOMMENDED P.C.B LAYOUT
TOP VIEW



SECTION A-A

Material:

- ItemⒶ Terminal housing : Thermoplastic (UL 94V-0)
- ItemⒷ Clamp : Brass , Ni plated
- ItemⒸ Solder pin (Back single row) : Copper , Tin plated
- ItemⒹ Solder pin (Front single row) : Copper , Tin plated
- ItemⒺ Terminal screw: Steel Zinc plating"-slot type

Electrical cULs

- Voltage rating : 600V
- Current rating : 65A
- Wire range :
- Solid wire (AWG) : 6-20
- Stranded wire (AWG) : 6-20
- Torque (LB-In.) : 12.2
- Screw : M4.5
- Wire strip length : 10~11mm
- Withstanding voltage : 2.2KV
- Operating temperature : -40°C+115°C
- Soldering temperature : 260°C+5°C/5 Sec
- Safety Approval: cULus

A

A

N = Number of poles
 Dim L=Nx10.16
 Dim B=(N-1)x10.16

Poles	Tolerance
2P/4P	±0.20
6P/8P	±0.30
10P/12P	±0.40

PART NO.: KP xx 2 1 x 0 00J0 G

End Stackable
 No. of poles
 02 2 poles
 04 4 poles

 12 12 poles

Body Color
 0 Black (RAL9005)
 2 Red (RAL3001/D)
 3 Orange(RAL2011/P)
 4 Yellow(RAL1018/A)
 5 Green(RAL6018/T)
 6 Blue (RAL5015/A)
 8 Grey(RAL7035/D)
 9 White(RAL1102)
 C Green(RAL6018/U)

RoHS compliant
 (lead<4%)
 In copper Alloy

mat'l. code				surface ASME Y14.5		tolerance ASME Y14.5		projection		product family TERMINAL BLOCK	
ltr	ecn no	dr	date	tolerances unless otherwise specified				MM		title TERMINAL BLOCK	
				angles	X.±0.5		MM		RISING CLAMP,100D WIRE INLET,DOUBLE INTERLACE TAIL,EVEN POLES		
				flatness	X.X±0.3		scale		sheet 1 of 2 size		
				total run out	X.XX±0.1		FCI		KPxx21x000J0G		
					dr	EVIN ZHONG	041414	type CUSTOMER Drawing		A4	
					enrg	EVIN ZHONG	041414				
					chr	HANKE FENG	041414				
					appd	SHI JUN	041414				
sheet index	revision sheet	A	1								

B

B



Copyright FCI.



FCIconnect.com



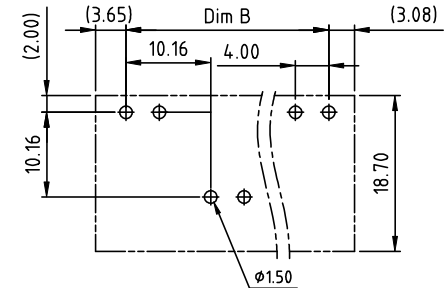
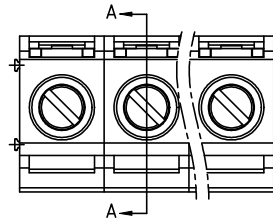
1

2

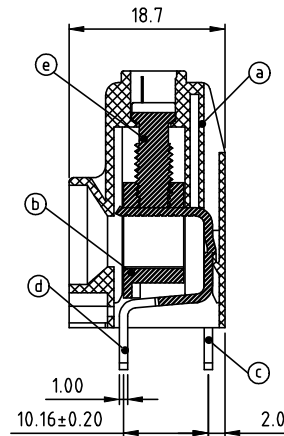
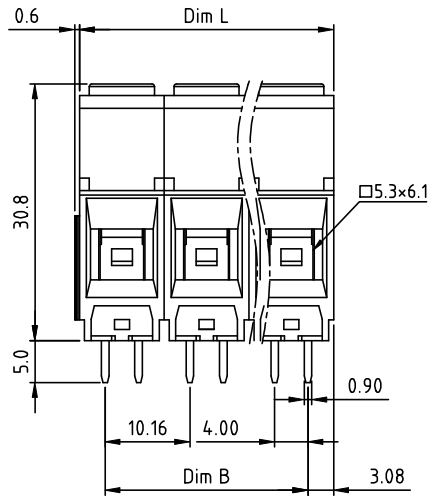
3

4

PRODUCT NUMBER	PITCH
KPxx21x000J0G	10.16 mm



RECOMMENDED P.C.B LAYOUT
TOP VIEW



SECTION A-A

Material:

- Item (a) Terminal housing : Thermoplastic (UL 94V-0)
- Item (b) Clamp : Brass , Ni plated
- Item (c) Solder pin (Back single row) : Copper , Tin plated
- Item (d) Solder pin (Front single row) : Copper , Tin plated
- Item (e) Terminal screw : Steel Zinc plating"-slot type

Electrical cULs

- Voltage rating : 600V
- Current rating : 65A
- Wire range :
- Solid wire (AWG) : 6-20
- Stranded wire (AWG) : 6-20
- Torque (LB-In.) : 12.2
- Screw : M4.5
- Wire strip length : 10 ~ 11mm
- Withstanding voltage : 2.2KV
- Operating temperature : -40°C+115°C
- Soldering temperature : 260°C+5°C/5 Sec
- Safety Approval : US

A

A

N = Number of poles
 Dim L=Nx10.16
 Dim B=(N-1)x10.16

Poles	Tolerance
3P	±0.20
5P/7P	±0.30
9P/11P	±0.40

PART NO.: KP xx 2 1 x 0 00J0 G

End Stackable
 No. of poles
 03 3 poles
 05 5 poles

 11 11 poles

Body Color
 0 Black (RAL9005)
 2 Red (RAL3001/D)
 3 Orange(RAL2011/P)
 4 Yellow(RAL1018/A)
 5 Green(RAL6018/T)
 6 Blue (RAL5015/A)
 8 Grey(RAL7035/D)
 9 White(RAL1102)
 C Green(RAL6018/U)

RoHS compliant
 (lead<4%)
 In copper Alloy

mat'l. code		surface ASME Y14.5	tolerance ASME Y14.5	projection 	product family TERMINAL BLOCK
ltr	ecn no	dr	date	title TERMINAL BLOCK	
tolerances unless otherwise specified				MM	RISING CLAMP,180D WIRE INLET,DOUBLE INTERLACE TAIL,0DD POLES
angles	X.±0.5		scale		
flat	X.X±0.3		dwg no		
curv	X.XX±0.1		sheet 2 of 2 size		
dr	EVIN ZHONG	041414	KPxx21x000J0G		
enrg	EVIN ZHONG	041414	A4		
chr	HANKE FENG	041414	type		
appd	SHI JUN	041414	CUSTOMER Drawing		
sheet index	revision sheet	A	2		

B

B

form: A4mmXLc

1

2

3

4

X-ON Electronics

Largest Supplier of Electrical and Electronic Components

Click to view similar products for [Fixed Terminal Blocks](#) category:

Click to view products by [Amphenol](#) manufacturer:

Other Similar products are found below :

[00175550202](#) [MBE-1512](#) [MBE-1520](#) [MBE-154](#) [MBE-156](#) [MBES-1510](#) [MBES-153](#) [MBES-156](#) [MH-2512](#) [MHE-132](#) [MHE-133](#) [MHE-163](#)
[MI-254 \(35\)](#) [MI-272](#) [8739](#) [880507](#) [880508](#) [MPT-275](#) [1546551-6](#) [ELM023100](#) [ELM10110G](#) [ELVD12100](#) [BA311TU](#) [BA411SU](#) [MV-152](#)
[MV-253/NCNOC](#) [MV-254-D](#) [MV-255](#) [MV-462](#) [MV-472](#) [MV-493](#) [MVE-252](#) [MVE-253](#) [MVE-258](#) [MVE-273](#) [MVEB-153](#) [1700096](#)
[1702246](#) [1705142](#) [1712417](#) [1713020](#) [1713088](#) [1776118-2](#) [1790852](#) [1-796689-8](#) [1-796692-6](#) [1800001](#) [1800114](#) [1823215](#) [1838462](#)