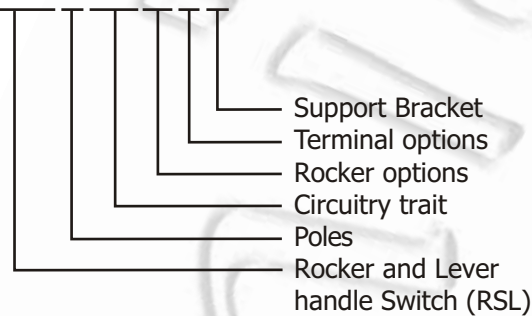


### Specification:

- 1) Rating: 6 A 125 VAC; 3 A 250 VAC
- 2) Contact Resistance: 20 mW max.
- 3) Insulation Resistance: 500 VDC 1000 MW min.
- 4) Dielectric strength: 1500 VAC, 1 minute
- 5) Operating Temperature: -55°C ~ +85°C
- 6) Electrical Life: 20000 cycles

### RSL102A2T

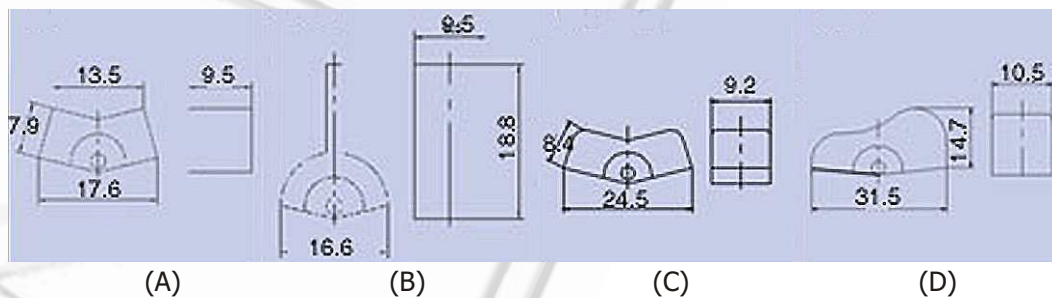


### CIRCUITRY TRAIT

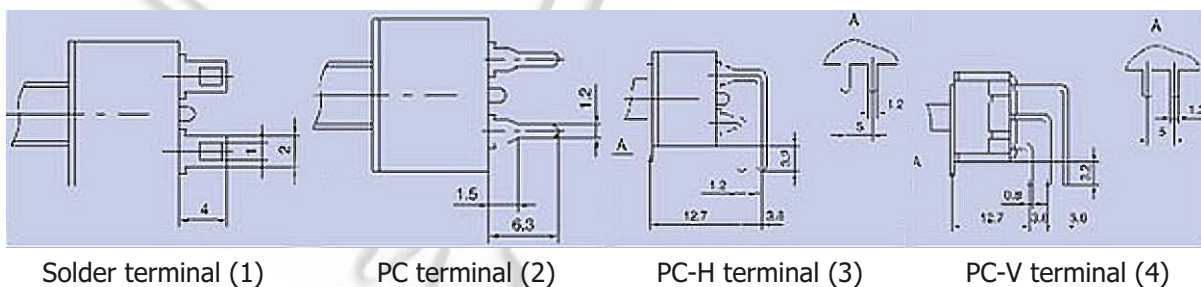
02	ON	-	ON
12	ON	-	(ON)
03	ON	OFF	ON
13	ON	OFF	(ON)
23	(ON)	OFF	(ON)

( ) indicates momentary

### ROCKER OPTIONS



### TERMINAL OPTIONS



Solder terminal (1)

PC terminal (2)

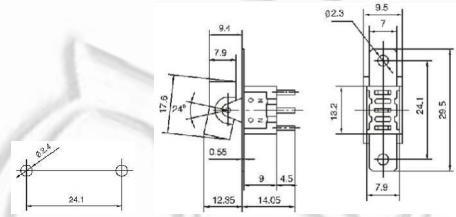
PC-H terminal (3)

PC-V terminal (4)

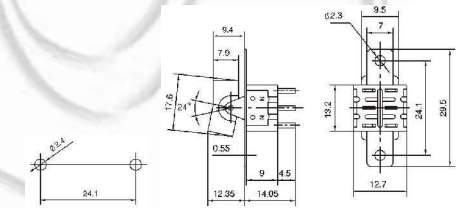
# Ninigi



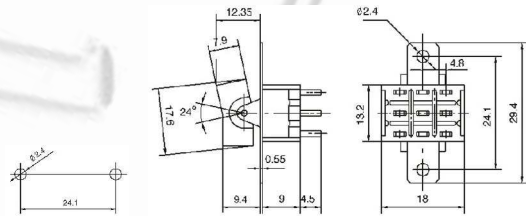
**RSL102A1** ON-ON  
**RSL112A1** ON-(ON)  
**RSL103A1** ON-OFF-ON  
**RSL113A1** ON-OFF-(ON)  
**RSL123A1** (ON)-OFF-(ON)  
 SPDT 3P



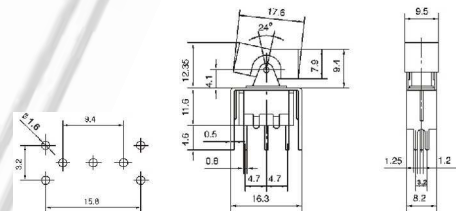
**RSL202A1** ON-ON  
**RSL212A1** ON-(ON)  
**RSL203A1** ON-OFF-ON  
**RSL213A1** ON-OFF-(ON)  
**RSL223A1** (ON)-OFF-(ON)  
 DPDT 6P



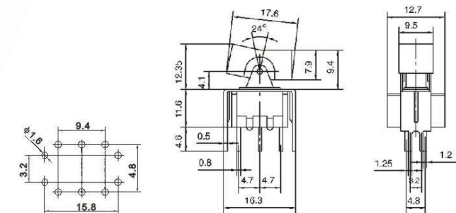
**RSL302A1** ON-ON  
**RSL303A2T** ON-OFF-ON  
 3PDT 9P



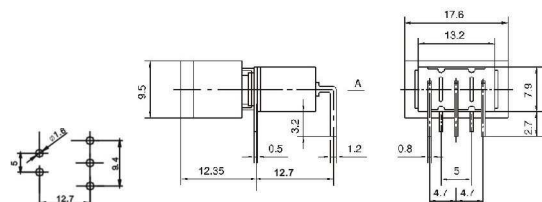
**RSL102A2T** ON-ON  
**RSL112A2T** ON-(ON)  
**RSL103A2T** ON-OFF-ON  
**RSL113A2T** ON-OFF-(ON)  
**RSL123A2T** (ON)-OFF-(ON)  
 SPDT 3P



**RSL202A2T** ON-ON  
**RSL212A2T** ON-(ON)  
**RSL203A2T** ON-OFF-ON  
**RSL213A2T** ON-OFF-(ON)  
**RSL223A2T** (ON)-OFF-(ON)  
 DPDT 6P



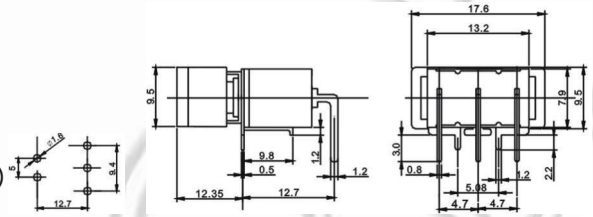
**RSL102A3** ON-ON  
**RSL112A3** ON-(ON)  
**RSL103A3** ON-OFF-ON  
**RSL113A3** ON-OFF-(ON)  
**RSL123A3** (ON)-OFF-(ON)  
 SPDT 3P



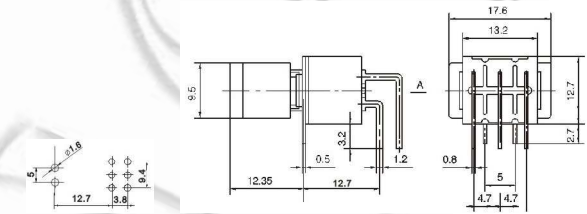
# Ninigi



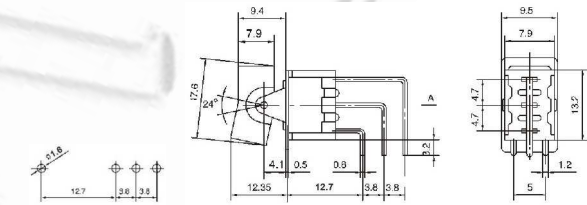
**RSL102A3T** ON-ON  
**RSL112A3T** ON-(ON)  
**RSL103A3T** ON-OFF-ON  
**RSL113A3T** ON-OFF-(ON)  
**RSL123A3T** (ON)-OFF-(ON)  
 SPDT 3P



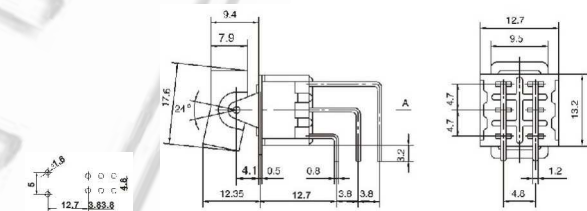
**RSL202A3** ON-ON  
**RSL212A3** ON-(ON)  
**RSL203A3** ON-OFF-ON  
**RSL213A3** ON-OFF-(ON)  
**RSL223A3** (ON)-OFF-(ON)  
 DPDT 6P



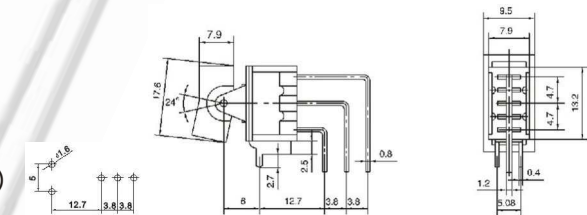
**RSL102A4** ON-ON  
**RSL112A4** ON-(ON)  
**RSL103A4** ON-OFF-ON  
**RSL113A4** ON-OFF-(ON)  
**RSL123A4** (ON)-OFF-(ON)  
 SPDT 3P



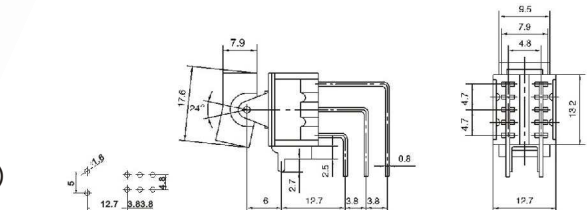
**RSL202A4** ON-ON  
**RSL212A4** ON-(ON)  
**RSL203A4** ON-OFF-ON  
**RSL213A4** ON-OFF-(ON)  
**RSL223A4** (ON)-OFF-(ON)  
 DPDT 6P



**RSL102A4T** ON-ON  
**RSL112A4T** ON-(ON)  
**RSL103A4T** ON-OFF-ON  
**RSL113A4T** ON-OFF-(ON)  
**RSL123A4T** (ON)-OFF-(ON)  
 SPDT 3P



**RSL202A4T** ON-ON  
**RSL212A4T** ON-(ON)  
**RSL203A4T** ON-OFF-ON  
**RSL213A4T** ON-OFF-(ON)  
**RSL223A4T** (ON)-OFF-(ON)  
 DPDT 6PP



## X-ON Electronics

Largest Supplier of Electrical and Electronic Components

*Click to view similar products for [Rocker Switches](#) category:*

*Click to view products by [Ninigi](#) manufacturer:*

Other Similar products are found below :

[VKD2GHNB-00000-000](#) [VSD2GNNB-00000-000](#) [6-1571986-5](#) [6-1571986-9](#) [632422-4B-KD](#) [7036WWCDBX653+U622](#) [8055K52Z7V](#)  
[8138K20E6M50](#) [FMC18A2200002](#) [84206L](#) [84312LX](#) [PREDD4-07F-BB0FW](#) [PREDD5-07F-BB0GW](#) [PRFDD1-16F-BB000](#) [PRFDD3-16F-](#)  
[BB000](#) [1-1634201-0](#) [999-16702-001](#) [A101J2ZQ004](#) [A101J4ZQ004](#) [A101J51CB0004](#) [A107J51ZQ0004](#) [A201J1AQ004](#) [A201J1AV2Q004](#)  
[A201J3ZB004](#) [A201J50ZQ004](#) [A203J51ZQ0004](#) [A226L11YZQ](#) [A22L11A](#) [A435S1YZQ](#) [H8500XBBBBL-A](#) [H8653VBBG2577W](#)  
[HB130CHNWWNAAC](#) [1251.0303](#) [AE205J60V3B004](#) [RH110C2NBB](#) [1352.0107](#) [1363.0201](#) [AML25GBF2AA03GR](#) [1571099-3](#) [1571987-4](#)  
[1571987-5](#) [1571989-7](#) [B123J77V7B2](#) [B226J50W4Q22P](#) [B433J37ZQ22M](#) [160212E](#) [1801.1164](#) [1831.1102](#) [1833.3402](#) [1837.1118](#)