



PROFIBUS Receptacle Connectors

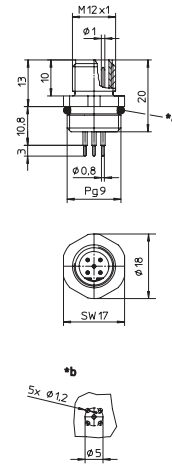
0976 PMC 152



M12 Male

Receptacle connector, M12 male connector for front mounting, 5 poles, B coding, print contacts, chassis side thread PG 9.

– especially suitable for Profibus –



*a O-Ring

*b hole pattern in printed circuit board

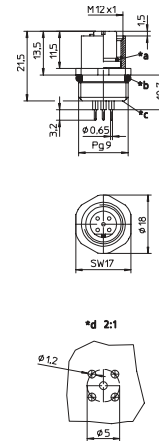
0976 PFC 152



M12 Female

Receptacle connector, M12 female connector for front mounting, 5 poles, B coding, printed contacts, chassis side thread PG 9.

– especially suitable for Profibus –



*a O-Ring

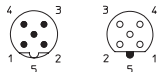
*b O-ring loose enclosed

*c solder contacts potted with epoxy

*d hole pattern in printed circuit board

Pin Assignment

M12 - 5 Poles (B-Coding)





Be Certain with Belden

PROFIBUS Receptacle Connectors

0976 PMC 152 | 0976 PFC 152

Technical Data

Environmental

Degree of protection IP 67 / NEMA 6P
 Operating temperature range -25°C (-13°F) / +90°C (+194°F)

Mechanical

Housing / Molded body CuZn, nickel-plated
 Insert TPU, self-extinguishing
 Contact CuZn, pre-nickeled and 0.8 microns gold-plated
 O-ring FKM
 Mode of connection printed circuit board mount

Electrical

Contact resistance ≤ 5 mΩ
 Nominal current at 40°C 4 A
 Nominal voltage 60 V
 Rated voltage 63 V
 Test voltage 1.5 kV eff. / 60 s
 Insulation resistance > 10⁹ Ω
 Pollution degree 3

Part Number	Pins	
0976 PMC 152	5B	 
0976 PFC 152	5B	 

X-ON Electronics

Largest Supplier of Electrical and Electronic Components

Click to view similar products for [Standard Circular Connector](#) category:

Click to view products by [Lumberg](#) manufacturer:

Other Similar products are found below :

[C015 10F006 001 1](#) [5M2530B10P](#) [600247N007](#) [600259N006](#) [600273N007](#) [600432N009](#) [6280-2PG-519](#) [6280-3PG-311](#) [6280-3SG-311](#)
[6280-7SG-3DC](#) [6280-7SG-522](#) [6282-5PG-311](#) [6282-6PG-519](#) [6282-8SG-311](#) [6283-11](#) [6283-15](#) [6290](#) [6293](#) [6382-2PG-311](#) [6382-2PG-3DC](#)
[6382-2SG-321](#) [6382-2SG-3DC](#) [6382-4SG-516](#) [67-03E20-37P](#) [681-PMG](#) [CXS3102A14S2P](#) [CXS3102A181S](#) [CXS3106A14S6S](#)
[D38999/20FC8SA L/C](#) [MB12P-1](#) [MB12R-6](#) [7251-2PG-300](#) [7251-2SG-300](#) [7251-4PG-300](#) [7251-4SG-300](#) [7251-5PG-300](#) [7251-5SG-300](#)
[7251-6SG-300](#) [7251-7PG-300](#) [7251-8PG-300](#) [7271-6SG-300](#) [7282-3PG-300-CH3](#) [73000005663](#) [75-190011-03P](#) [75-190216-08S](#) [75-190218-](#)
[10P](#) [75-214636-52P](#) [75-474118-10P](#) [75-474211-03P](#) [75-474218-19S](#)