

### KTIR0421DS

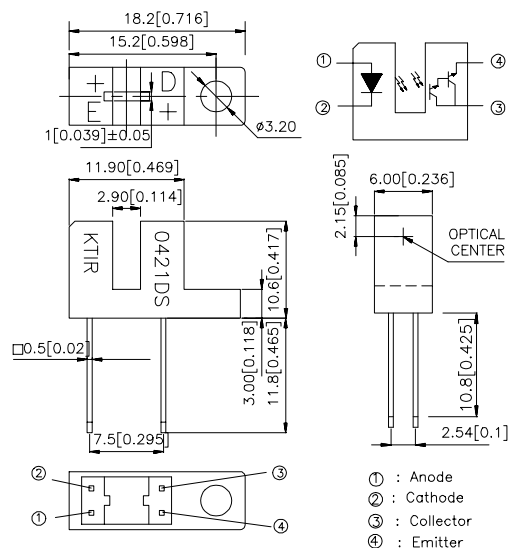
#### Features

- High sensing accuracy
- High current transfer ratio
- Both-sides mounting type

#### Applications

- OA equipment, such as floppy disk drives, printers, facsimiles, etc
- VCRs

#### Package Dimensions



#### Notes:

1. All dimensions are in millimeters (inches).
2. Tolerance is  $\pm 0.15$  (0.006") unless otherwise noted.
3. Lead spacing is measured where the lead emerge package.
4. Specifications are subject to change without notice.

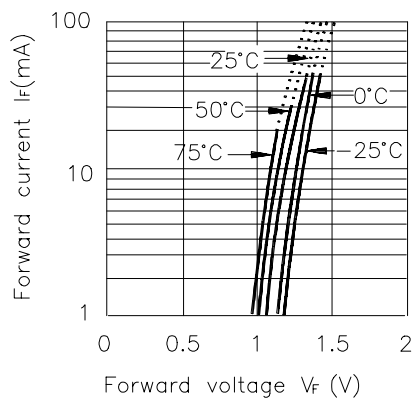
#### Absolute Maximum Ratings ( $T_a=25^\circ\text{C}$ )

Parameter		Symbol	Rating	Unit
Input	Forward current	$I_F$	50	mA
	Reverse voltage	$V_R$	5	V
	Power dissipation	P	75	mW
Output	Collector-emitter voltage	$V_{CEO}$	30	V
	Emitter-collector voltage	$V_{ECO}$	5	V
	Collector current	$I_C$	40	mA
	Collector power dissipation	$P_C$	75	mW
Operating temperature		$T_{opr}$	-25~+85	$^\circ\text{C}$
Storage temperature		$T_{stg}$	-40~+100	$^\circ\text{C}$
Soldering temperature (1/16 inch from body for 5 seconds)		$T_{sol}$	260	$^\circ\text{C}$

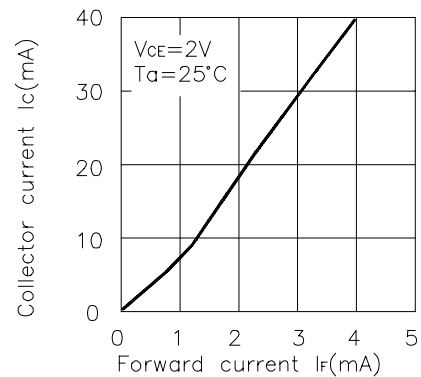
## Electro-optical Characteristics (Ta=25°C)

Parameter		Symbol	Conditions	Min.	Typ.	Max.	Unit	
Input	Forward voltage	$V_F$	$I_F=20\text{mA}$	—	1.2	1.5	V	
	Peak forward voltage	$V_{FM}$	$I_{FM}=0.5\text{A}$	—	2	4	V	
	Reverse current	$I_R$	$V_R=5\text{V}$	—	—	10	$\mu\text{A}$	
Output	Collector dark current	$I_{CEO}$	$V_{CE}=10\text{V}, I_F=0\text{mA}$	—	—	$10^{-6}$	A	
Transfer characteristics	Current transfer ratio		CTR	$V_{CE}=2\text{V}, I_F=1\text{mA}$	—	650	—	%
	Collector-emitter saturation voltage		$V_{CE(sat)}$	$I_F=2\text{mA}, I_C=1\text{mA}$	—	—	1.0	V
	Response time	Rise time	$t_r$	$V_{CE}=2\text{V}, I_C=10\text{mA}$ $R_L=100\Omega$	—	90	400	$\mu\text{sec}$
		Fall time	$t_f$		—	80	300	$\mu\text{sec}$

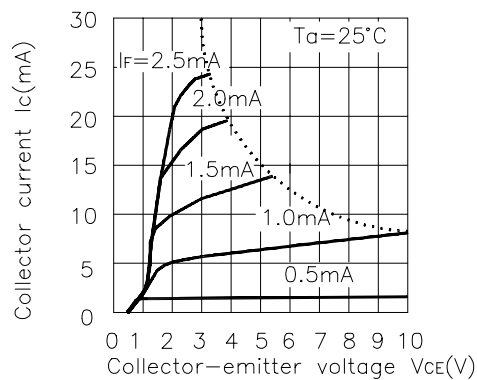
**Fig.1 Forward Current vs. Forward Voltage**



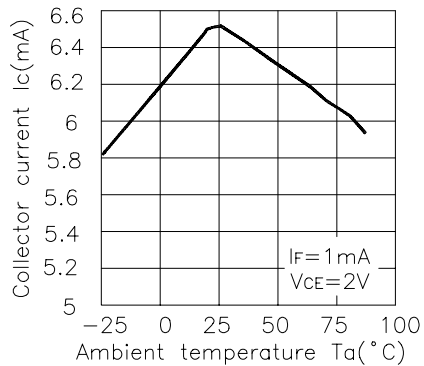
**Fig.2 Collector Current vs. Forward Current**



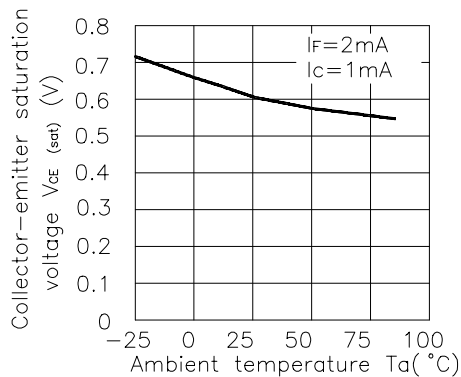
**Fig.3 Collector Current vs. Collector-emitter Voltage**



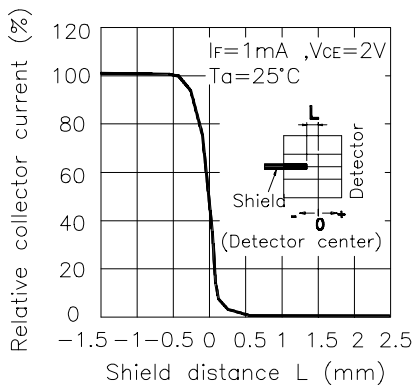
**Fig.4 Collector Current vs. Ambient Temperature**



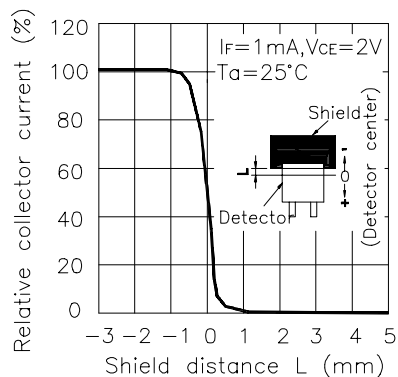
**Fig.5 Collector-emitter Saturation Voltage vs. Ambient Temperature**



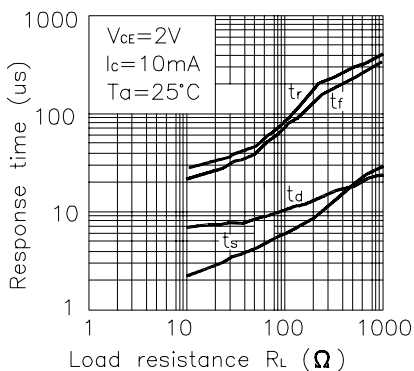
**Fig.6 Relative Collector Current vs. Shield Distance(1)**



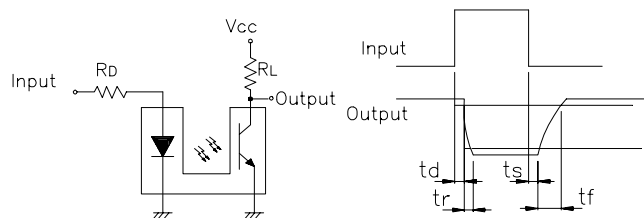
**Fig.7 Relative Collector Current vs. Shield Distance(2)**



**Fig.8 Response Time vs. Load Resistance**



**Test Circuit for Response Time**



## X-ON Electronics

Largest Supplier of Electrical and Electronic Components

*Click to view similar products for [Photoelectric Sensors](#) category:*

*Click to view products by [Kingbright](#) manufacturer:*

Other Similar products are found below :

[E3JM-DS70R4T-US](#) [E3L2DC4](#) [E3RA-DN12 2M](#) [E3RA-DP12 2M](#) [E3S5LE4S](#) [E3S-AD38](#) [E3S-CR11 5M](#) [E3SCT11D5M](#) [E3SCT11M1J03M](#)  
[E3T-SL14R](#) [E3T-SL24 5M](#) [E3T-ST12R](#) [E3X-CN02](#) [E3X-CN11 5M](#) [E3X-CN21 10M](#) [E3ZM-B66](#) [E3ZM-CL81H 2M](#) [E3Z-T62 2M](#)  
[NJL5303R-TE1](#) [PB10CNT15PO](#) [PD60CNX20BP](#) [CX-491-P-J](#) [CX-491-Z](#) [XUM2BKCNL2T](#) [XUM2BKCNL2T](#) [XUM2BNANL2R](#) [Y92E-](#)  
[ES30M](#) [Y92E-GS08SS](#) [ZXTDS04T](#) [ZX-XC4A 4M](#) [E3E23Y2US](#) [E3JM-DS70S4-US](#) [E3RA-RN11 2M](#) [E3S5LE42M](#) [E3S-LS20XB4 5M](#)  
[E3TFD14N](#) [E3T-FD14R](#) [E3T-SL21 5M](#) [E3T-SL21M](#) [E3T-ST11R](#) [E3T-ST12 5M](#) [E3X-DA41-S-M1J 0.3M](#) [E3X-DAB6](#) [E3X-DAG8](#) [E3ZM-](#)  
[B86](#) [E3ZM-CR81 2M](#) [E3ZM-CR86](#) [E3Z-T61A-L 2M](#) [ZX-XGC2R](#) [ZX-XB1A](#)