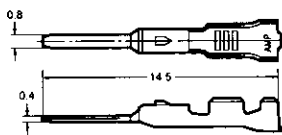
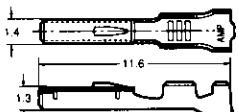


# Mini Multi Lock Connectors

## Contact

Contact	Wire Range	Wire Ins. Diameter	Material/Finish	Part No. S.T.
<b>Tab</b>  Crimp Specifications : 114-5193	0.3-0.5mm <sup>2</sup> (AWG#22-20)	Ø1.4-1.7mm	Brass/Pre-tin	<b>917309-1</b>
<b>Receptacle</b>  Crimp Specifications : 114-5193	0.3-0.5mm <sup>2</sup> (AWG#22-20)	Ø1.4-1.7mm	Copper Alloy/Pre-tin	<b>917308-1</b>

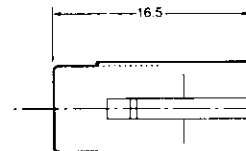
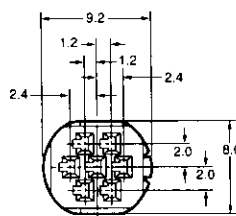
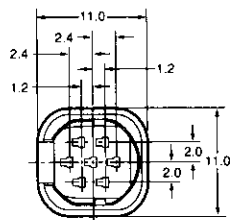
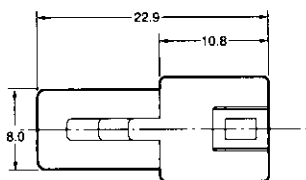
## Cap

## Plug

The waterproof version P/N : 917319-4

**7**  
Pos.

The waterproof version P/N : 917318-4

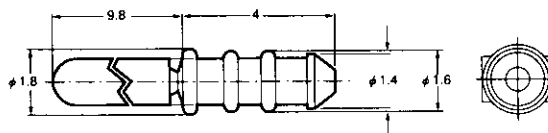


\*The figures in □ after part numbers vary according to housing color, the material is of PBT with glass. \*The material of rubber stopper is silicon rubber.

## Cavity Plug

The waterproof version P/N : 316390-7

The cavity plug is used to plug empty cavities.

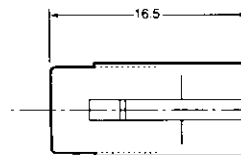
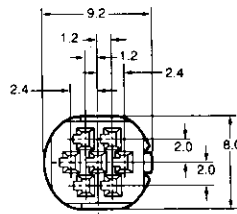
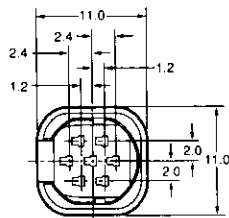
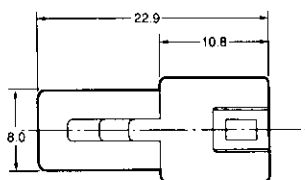


\*The color of cavity plug is yellow, and its material is of PBT.

The non-waterproof version P/N : 353900-4

**7**  
Pos.

The non-waterproof version P/N : 353899-4



\*The color of housings is light green, the material is of PBT with glass.

## X-ON Electronics

Largest Supplier of Electrical and Electronic Components

*Click to view similar products for te connectivity manufacturer:*

Other Similar products are found below :

[570416-000](#) [CLTEQ-M81CE-SSRELAY-4-20V](#) [4-1633138-8](#) [D38999/24FJ4AN](#) [4-1195131-0](#) [650069-000](#) [SMD100-2](#) [2EDL4CM](#)  
[DTS20W19-11PD-3028](#) [DTS20W19-11PD-3028-LC](#) [DTS20W19-32SD-3028-LC](#) [DTS20W19-32SD-3028](#) [NC6-P104-06](#) [TXR64AB90-](#)  
[3616AI](#) [DTS26F21-41HE](#) [DTS26F21-41AE](#) [DTS26F21-41PE-LC](#) [DTS26F21-11SE-3028-LC](#) [D38999/24WF32JE](#) [D38999/24WF32SE-LC](#)  
[DTS24W19-32HE](#) [D38999/20JB35HA](#) [D38999/24WJ20PA](#) [164-8033-08](#) [D38999/24FF32JE](#) [D38999/24FF32SE-LC](#) [D38999/24WF32JB](#)  
[D38999/24WG11HA](#) [D38999/24WG11HN](#) [MS27467T21F11H](#) [DJT16E21-11HA](#) [DTS24F19-32HE](#) [DTS20W19-32SA-3028-LC](#) [DTS24F19-](#)  
[11SC-3028-LC](#) [DTS24F19-11SC-3028](#) [DJT14E13-98HB](#) [D38999/20WC8BB](#) [1-330599-5](#) [DTS24F21-41HN-LC](#) [DTS24F21-41HN](#)  
[DTS24F21-41AN](#) [DTS24F21-39HN](#) [DTS24F21-41PN-LC](#) [AFD50-10-6SN-1A-LC](#) [DJT10F17-26HC](#) [DTS24W19-32HB](#) [ACT20JE99HA](#)  
[DJT10E17-26HC](#) [DJT10E17-26HN](#) [DJT10F17-26HA](#)