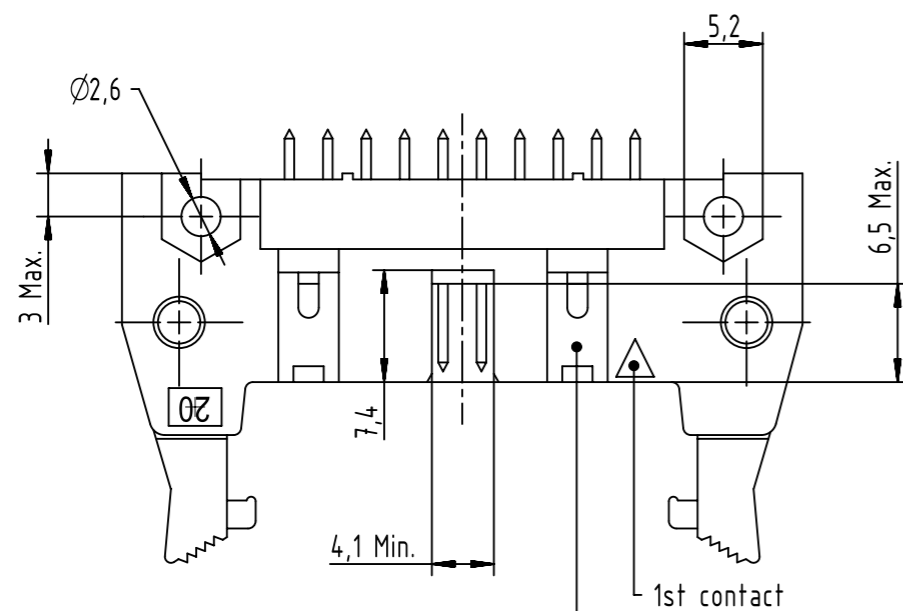
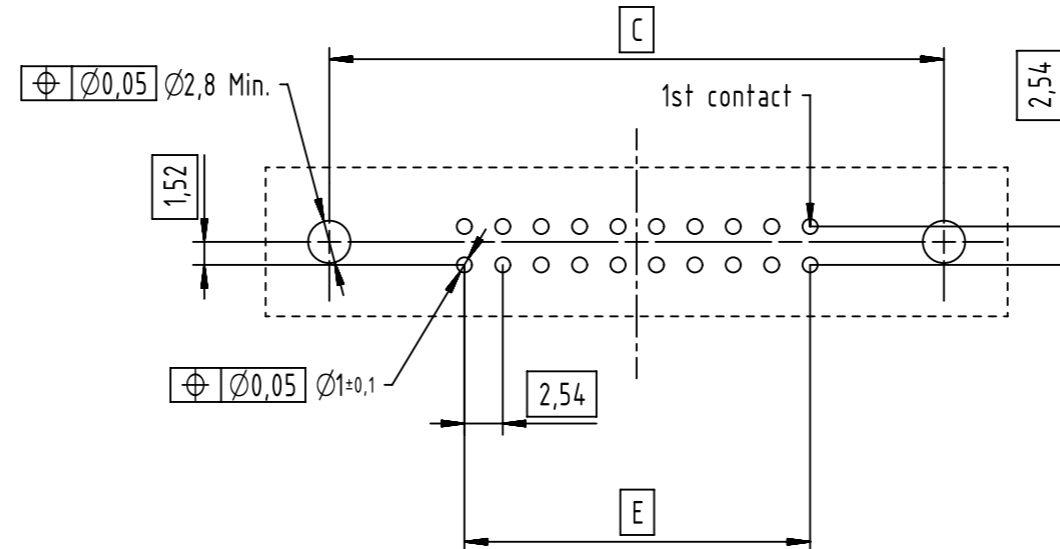
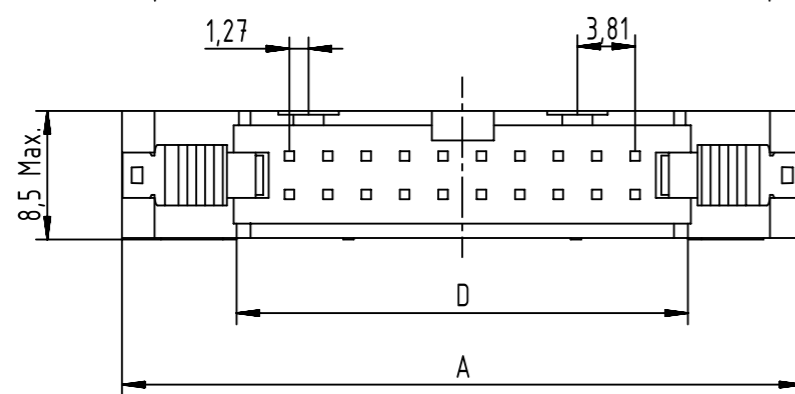
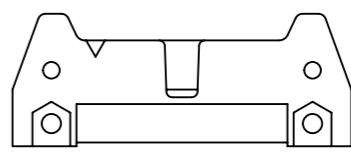
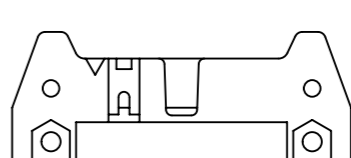
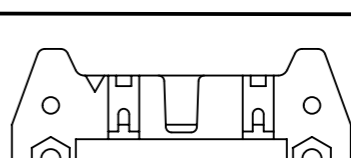


PC-Board layout
view component side




See tables for coding
feature arrangement and style

Coding style table

	Style A: For connector 6 poles
	Style B: For connectors from 10 to 14 poles
	Style C: For connectors from 16 to 64 poles

Find further technical information on drawing DS 09181200001

	All rights reserved Department EC PD - FR	Created by DOUGE	Inspected by BAGDIKIAN	Standardisation HOFFMANN	Date 2013-11-07	State Final Release	Ref. Sub.
	HARTING Electronics GmbH D-32339 Espelkamp	Title SEK 18 male STD straight with long levers				Doc-Key / ECM-Nr. 100553089/UGD/001/A 50000067147	
		Type TB	Number 09185XXX90X				Page 1/2

		Performance Level					Dimensions (mm)				
		PL3 : 50 mating Cycles No Gas Test	PL2 : 250 mating Cycles 4 day Gas Test	S4 : 0,76µm Au or equivalent PdNi							
Nb of Contacts	Part Number	Part Number	Part Number	Insulator Color	Contact Length ±0,3(mm)	A Max	C	D	E	G	
06	0918 506 7904	0918 506 6904	0918 506 5904	Grey	2,9	27,2	22,86	12,45	2,54 x 2 = 5,08	40,3	
10	0918 510 7904	0918 510 6904	0918 510 5904			32,3	27,94	17,53	2,54 x 4 = 10,16	45,4	
14	0918 514 7904	0918 514 6904	0918 514 5904			37,4	33,02	22,61	2,54 x 6 = 15,24	50,4	
16	0918 516 7904	0918 516 6904	0918 516 5904			39,9	35,56	25,15	2,54 x 7 = 17,78	53,0	
20	0918 520 7904	0918 520 6904	0918 520 5904			45,0	40,64	30,23	2,54 x 9 = 22,86	58,1	
24	0918 524 7904	0918 524 6904	0918 524 5904			50,1	45,72	35,91	2,54 x 11 = 27,94	63,2	
26	0918 526 7904	0918 526 6904	0918 526 5904			52,6	48,26	37,85	2,54 x 12 = 30,48	65,7	
30	0918 530 7904	0918 530 6904	0918 530 5904			58,0	53,34	43,83	2,54 x 14 = 35,56	68,6	
34	0918 534 7904	0918 534 6904	0918 534 5904			62,8	58,42	48,01	2,54 x 16 = 40,64	75,8	
40	0918 540 7904	0918 540 6904	0918 540 5904			70,4	66,04	55,63	2,54 x 19 = 48,26	83,5	
50	0918 550 7904	0918 550 6904	0918 550 5904			83,1	78,74	68,33	2,54 x 24 = 60,96	96,2	
60	0918 560 7904	0918 560 6904	0918 560 5904			95,8	91,44	81,03	2,54 x 29 = 73,66	108,9	
64	0918 564 7904	0918 564 6904	0918 564 5904			100,9	96,52	86,11	2,54 x 31 = 78,74	113,9	
06	0918 506 7904 001	0918 506 6904 001	0918 506 5904 001			Black	2,9	27,2	22,86	12,45	2,54 x 2 = 5,08
10	0918 510 7904 001	0918 510 6904 001	0918 510 5904 001	32,3	27,94			17,53	2,54 x 4 = 10,16	45,4	
14	0918 514 7904 001	0918 514 6904 001	0918 514 5904 001	37,4	33,02			22,61	2,54 x 6 = 15,24	50,4	
16	0918 516 7904 001	0918 516 6904 001	0918 516 5904 001	39,9	35,56			25,15	2,54 x 7 = 17,78	53,0	
20	0918 520 7904 001	0918 520 6904 001	0918 520 5904 001	45,0	40,64			30,23	2,54 x 9 = 22,86	58,1	
24	0918 524 7904 001	0918 524 6904 001	0918 524 5904 001	50,1	45,72			35,91	2,54 x 11 = 27,94	63,2	
26	0918 526 7904 001	0918 526 6904 001	0918 526 5904 001	52,6	48,26			37,85	2,54 x 12 = 30,48	65,7	
30	0918 530 7904 001	0918 530 6904 001	0918 530 5904 001	58,0	53,34			43,83	2,54 x 14 = 35,56	68,6	
34	0918 534 7904 001	0918 534 6904 001	0918 534 5904 001	62,8	58,42			48,01	2,54 x 16 = 40,64	75,8	
40	0918 540 7904 001	0918 540 6904 001	0918 540 5904 001	70,4	66,04			55,63	2,54 x 19 = 48,26	83,5	
50	0918 550 7904 001	0918 550 6904 001	0918 550 5904 001	83,1	78,74			68,33	2,54 x 24 = 60,96	96,2	
60	0918 560 7904 001	0918 560 6904 001	0918 560 5904 001	95,8	91,44			81,03	2,54 x 29 = 73,66	108,9	
64	0918 564 7904 001	0918 564 6904 001	0918 564 5904 001	100,9	96,52			86,11	2,54 x 31 = 78,74	113,9	
06	0918 506 7902	0918 506 6902	0918 506 5902	Grey	4,5			27,2	22,86	12,45	2,54 x 2 = 5,08
10	0918 510 7902	0918 510 6902	0918 510 5902			32,3	27,94	17,53	2,54 x 4 = 10,16	45,4	
14	0918 514 7902	0918 514 6902	0918 514 5902			37,4	33,02	22,61	2,54 x 6 = 15,24	50,4	
16	0918 516 7902	0918 516 6902	0918 516 5902			39,9	35,56	25,15	2,54 x 7 = 17,78	53,0	
20	0918 520 7902	0918 520 6902	0918 520 5902			45,0	40,64	30,23	2,54 x 9 = 22,86	58,1	
24	0918 524 7902	0918 524 6902	0918 524 5902			50,1	45,72	35,91	2,54 x 11 = 27,94	63,2	
26	0918 526 7902	0918 526 6902	0918 526 5902			52,6	48,26	37,85	2,54 x 12 = 30,48	65,7	
30	0918 530 7902	0918 530 6902	0918 530 5902			58,0	53,34	43,83	2,54 x 14 = 35,56	68,6	
34	0918 534 7902	0918 534 6902	0918 534 5902			62,8	58,42	48,01	2,54 x 16 = 40,64	75,8	
40	0918 540 7902	0918 540 6902	0918 540 5902			70,4	66,04	55,63	2,54 x 19 = 48,26	83,5	
50	0918 550 7902	0918 550 6902	0918 550 5902			83,1	78,74	68,33	2,54 x 24 = 60,96	96,2	
60	0918 560 7902	0918 560 6902	0918 560 5902			95,8	91,44	81,03	2,54 x 29 = 73,66	108,9	
64	0918 564 7902	0918 564 6902	0918 564 5902			100,9	96,52	86,11	2,54 x 31 = 78,74	113,9	
06	0918 506 7902 001	0918 506 6902 001	0918 506 5902 001			Black	4,5	27,2	22,86	12,45	2,54 x 2 = 5,08
10	0918 510 7902 001	0918 510 6902 001	0918 510 5902 001	32,3	27,94			17,53	2,54 x 4 = 10,16	45,4	
14	0918 514 7902 001	0918 514 6902 001	0918 514 5902 001	37,4	33,02			22,61	2,54 x 6 = 15,24	50,4	
16	0918 516 7902 001	0918 516 6902 001	0918 516 5902 001	39,9	35,56			25,15	2,54 x 7 = 17,78	53,0	
20	0918 520 7902 001	0918 520 6902 001	0918 520 5902 001	45,0	40,64			30,23	2,54 x 9 = 22,86	58,1	
24	0918 524 7902 001	0918 524 6902 001	0918 524 5902 001	50,1	45,72			35,91	2,54 x 11 = 27,94	63,2	
26	0918 526 7902 001	0918 526 6902 001	0918 526 5902 001	52,6	48,26			37,85	2,54 x 12 = 30,48	65,7	
30	0918 530 7902 001	0918 530 6902 001	0918 530 5902 001	58,0	53,34			43,83	2,54 x 14 = 35,56	68,6	
34	0918 534 7902 001	0918 534 6902 001	0918 534 5902 001	62,8	58,42			48,01	2,54 x 16 = 40,64	75,8	
40	0918 540 7902 001	0918 540 6902 001	0918 540 5902 001	70,4	66,04			55,63	2,54 x 19 = 48,26	83,5	
50	0918 550 7902 001	0918 550 6902 001	0918 550 5902 001	83,1	78,74			68,33	2,54 x 24 = 60,96	96,2	
60	0918 560 7902 001	0918 560 6902 001	0918 560 5902 001	95,8	91,44			81,03	2,54 x 29 = 73,66	108,9	
64	0918 564 7902 001	0918 564 6902 001	0918 564 5902 001	100,9	96,52			86,11	2,54 x 31 = 78,74	113,9	

	All Dimensions in mm Original Size DIN A3	Scale 2:1	Free size tol.	Ref.	
				Sub.	
	All rights reserved	Created by DOUGE	Inspected by BAGDIKIAN	Standardisation HOFFMANN	Date 2013-11-07
	Department EC PD - FR	Title SEK 18 male STD straight with long levers			State Final Release
HARTING Electronics GmbH D-32339 Espelkamp		Type TB	Number 09185XXX90X	Doc-Key / ECM-Nr. 100553089/UGD/001/A 50000067147	
				Rev. A	Page 2/2

X-ON Electronics

Largest Supplier of Electrical and Electronic Components

Click to view similar products for [Headers & Wire Housings](#) category:

Click to view products by [HARTING](#) manufacturer:

Other Similar products are found below :

[95000-104TRLF](#) [10135584-644402LF](#) [DF62W-EP2022PCA](#) [95000-106TRLF](#) [DF62W-2022SCA](#) [DF62W-EP2022PC](#) [2203348](#) [DF62W-2022SC](#) [1084018](#) [1029039](#) [1084017](#) [802-10-012-10-002000](#) [1112640](#) [1112639](#) [891-007-9SS-BST1T](#) [000-34000](#) [0008550134](#) [0009482033](#) [0009507031](#) [57102-F02-18ULF](#) [57102-S06-03LF](#) [57202-S52-04LF](#) [PCN6-15S-2.5E](#) [0039019024](#) [58102-G61-06LF](#) [582553-1](#) [0009485154](#) [0009508121](#) [0022285053](#) [0050291907](#) [018731A](#) [LY20-4P-DT1-P1E-BR](#) [02.125.8002.8](#) [60101931](#) [60598-1 \(Cut Strip\)](#) [M1625-3R/100](#) [61062-3](#) [61082-181009](#) [CSU011177004](#) [636-1427](#) [638009-1](#) [641938-9](#) [641991-4](#) [644168-1](#) [644827-2](#) [647662-1](#) [65039-019ELF](#) [65692-001LF](#) [65781-018](#) [65781-047](#)