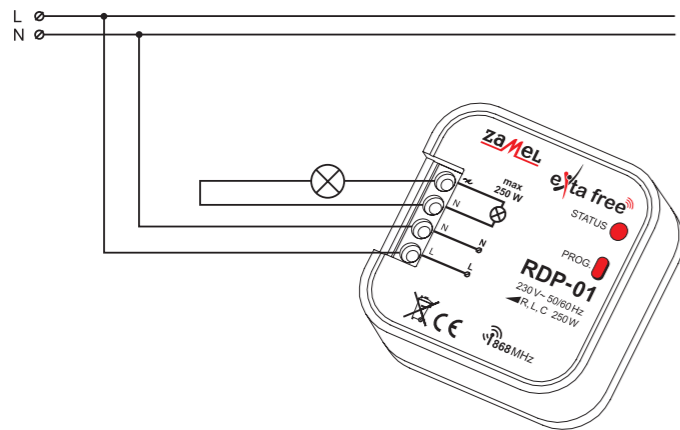


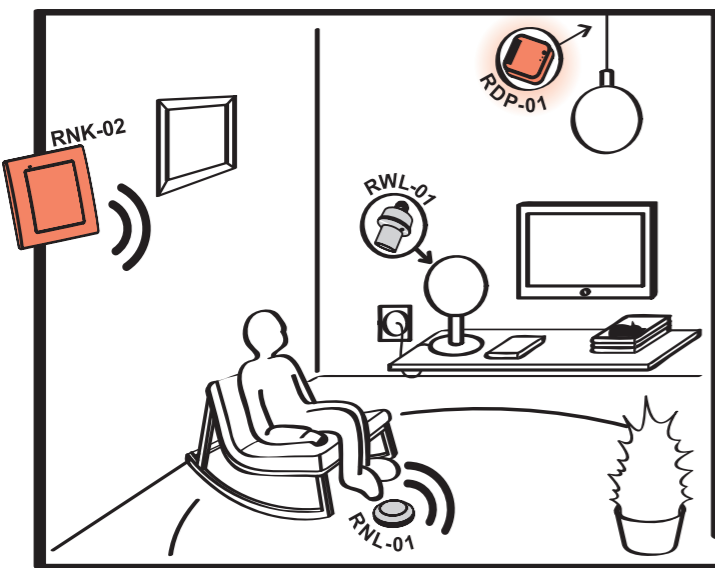
CONNECTION



CAPACITY



APPLICATION



Radio flush dimmer RDP-01 operates as a receiver of 2-channel button radio transmitter RNK-02 (switch on/switch off control, lighting source brightening/dimming). The above mentioned transmitters can also control operation of radio lighting switch RWL-01.



The ZAMEL company devices which are characterised with this sign can cooperate with each other.

WARRANTY CARD

There is 24 months guarantee on the product

- ZAMEL provides a two-year warranty for its products.
- The ZAMEL warranty does not cover: a) mechanical defects resulting from transport, loading / unloading or other circumstances b) defects resulting from incorrect installation or operation of ZAMEL products; c) defects resulting from any changes made by CUSTOMERS or third parties, to products sold or equipment necessary for the correct operation of products sold; d) defects resulting from force majeure or other aleatory events for which ZAMEL is not liable; e) power supply (batteries) to be equipped with a device in the moment of sale (if they appear);
- All complaints in relation to the warranty must be provided by the CUSTOMER in writing to the retailer after discovering a defect.;
- ZAMEL will review complaints in accordance with existing regulations.;
- The way a complaint is settled, e.g. replacement of the product, repair or refund, is left to the discretion of ZAMEL.
- Guarantee does not exclude, does not limit, nor does it suspend the rights of the PURCHASER resulting from the discrepancy between the goods and the contract.

Salesman stamp and signature, date of sale

RDP-01 MOUNTING

- Disconnect power supply by the phase fuse, the circuit-breaker or the switch-disconnector combined to the proper circuit.
- Check if there is no voltage on connection cables by means of a special measure equipment.
- Connect the cables with the terminals in accordance with the installing diagram.
- Install RDP-01 device in installation cable box.
- Switch on the power supply from the mains.

RNK-02 FUNCTIONING, MOUNTING

By pressing the button, the transmitter sends a signal with 868,32 MHz frequency which controls EXTA FREE receivers. **Device programming procedure (adding a transmitter to a receiver's memory) is described in particular EXTA FREE manual instructions.** The device range (up to 250 m depending on a receiver) can be increased by means of a retransmitter or few RTN-01 retransmitters. The device can be mounted in any place by means of double-sided adhesive tape or two wall plugs (5x(3x30) mm).

Mounting by means of wall plugs:

- Remove the button - to do it press the button on one side, and on the other side put a screwdriver into a slot and lift up the button.
- Find a place on the wall to mount the transmitter, make two holes corresponding mounting holes from the transmitter's base.
- Set wall plugs in the holes.
- Fix the base by means of screwing screws into wall plugs.
- Place the button again.

BATTERY CHANGE

Battery discharge status is signalled by several LED red diode flashes during transmission time.

- Remove the button (as in point 1 of mounting).
- By means of a screwdriver lever up the printed-circuit board releasing the bottom latch (Fig. 2), and remove it from the base.
- Remove the battery from the latch.
- Mount a new battery. **Watch battery polarisation marked on the latch. Wrong battery mounting may cause device damage.**
- Put the removed printed-circuit board back in the base.
- Put back the button.

CAUTION:

While changing the battery, it is suggested to press any of the buttons for about 5 seconds before putting it into a latch. Next press transmission button several times to check its operation. If the transmitter does not work properly repeat the battery change procedure.

RZB-02 WIRELESS CONTROL SET - LIGHTING WITH DIMMING FUNCTION

MANUAL INSTRUCTION



ZAMEL Sp. z o.o.



ul. Zielona 27, 43-200 Pszczyna, Poland
tel. +48 (32) 210 46 65, fax +48 (32) 210 80 04
www.zamelcet.com, e-mail: marketing@zamel.pl

DESCRIPTION

RDP-01 dimmer cooperates with light bulbs, compact fluorescent lamps powered by electronic or toroidal power supply transformers. The device has different functions: a traditional lighting dimmer function, time control functions (staircase time delay switch), comfort functions (memory of adjusted luminous density level).

FEATURES

- complete set of wireless control (2-channel button radio transmitter RNK-02 and 1-channel radio flash dimmer RDP-01),
- lighting operation control - switch on/switch off, brightening and dimming,
- cooperation with light bulbs, fluorescent lamps powered by electronic or toroidal transformer,
- memory of luminous density level,
- wide range of operation (up to 180 m),
- operation is optically signalled,
- low current consumption, possibility of constant work,
- possibility of widening operation range by means of RTN-01 retransmitter.



CAUTION!

The device is designed for single-phase installation and must be installed in accordance with standards valid in a particular country. The device should be connected according to the details included in this operating manual. Installation, connection and control should be carried out by a qualified electrician staff, who act in accordance with the service manual and the device functions. In case of casing dismantling an electric shock may occur, and the guarantee is lost then. Before installation make sure the connection cables are not under voltage. The cruciform head screwdriver 3,5 mm should be used to instal the device. Improper transport, storage, and use of the device influence its wrong functioning. It is not advisable to instal the device in the following cases: if any device part is missing or the device is damaged or deformed. In case of improper functioning of the device contact the producer.



The symbol means selective collecting of electrical and electronic equipment. It is forbidden to put the used equipment together with other waste.

TECHNICAL DATA

	RNK-02	RDP-01
Input (supply) terminals:	-	L, N
Input rated voltage:	3 V DC (CR2032 battery)	230 V AC
Battery life:	3 + 5 years	-
Input voltage tolerance:	-	-15 + +10 %
Nominal frequency:	-	50 / 60 Hz
Nominal power consumption:	-	0,5 W
Number of operation modes:	-	5
Number of channels:	2	1
Transmission:	radio 868,32 MHz	
Coding way:	unidirectional	
Coding:	addressing transmission	
Maximum number of transmitters:	-	32
Range:	up to 250 m in the open area	up to 230 m in the open area
Time adjustment:	-	1 sec + 18 hours (every 1 sec.)
Optic signalling of transmitter's operation:	LED red diode	
Receiver's output clamps:	-	~, N
Maximum output load:	-	250 W
Number of terminal clamps:	-	4
Section of connecting cables:	-	do 2,5 mm ²
Ambient temperature range:	-10 + +55 °C	
Operating position:	free	
Casing mounting:	wall plugs, double-sided adhesive tape	installation cable box Ø60 mm
Casing protection degree:	IP20 (EN 60529)	
Protection level:	III	II
Overvoltage category:	-	II
Pollution degree:	2	
Surge voltage:	-	1 kV (EN 61000-4-5)
Dimensions:	90 x 80 x 11,5 mm	47,5 x 47,5 x 20 mm
Weight:	0,038 kg	0,040 kg
Reference standard:	ETSI EN 300 220-1, ETSI EN 300 220-2	EN 60669, EN 60950, EN 61000

APPEARANCE

Receiver's input (supply) terminals (~, N)

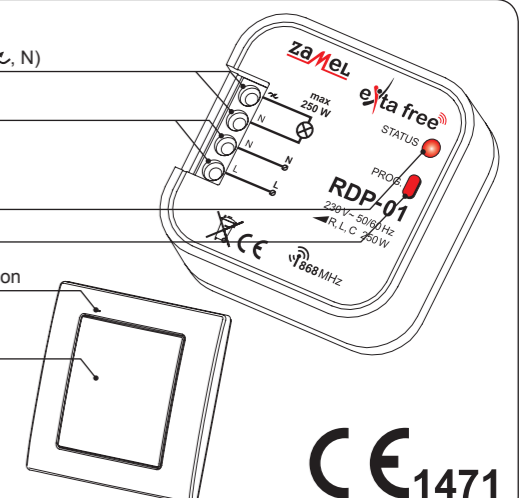
Input (supply) terminals (L, N)

Optic signalling of receiver's operation

Programming push-button

Optic signalling of transmitter's operation

Push-button

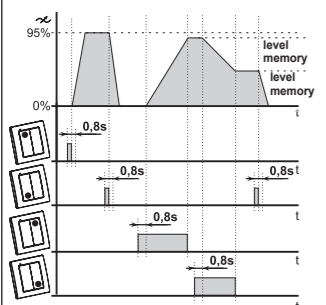
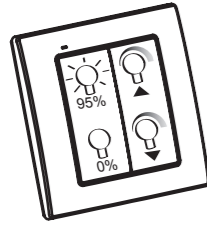


RDP-01 OPERATION

RDP-01 can operate in five modes:

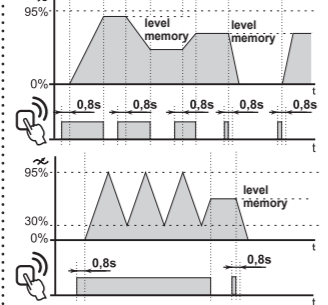
COMFORT

ON (Available only in cooperation with 4 push-button transmitter). In this mode the following two functions are realised:



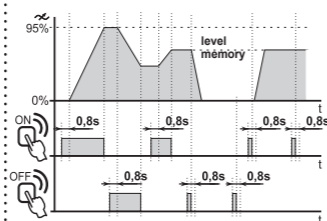
ONE PUSH-BUTTON

ON/OFF Pressing the programmed push-button shortly (<0.8 sec.) causes the dimmer to operate in the range of switch on/switch off (to the last adjustment of lighting luminous density level), however pressing the programmed push-button longer (>0.8 sec.) causes alternate lighting brightening - dimming.



TWO PUSH-BUTTON

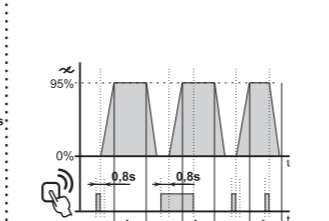
ON SWITCH ON push-button: pressing the programmed push-button shortly (<0.8 sec.) causes the lighting switches on (the last adjustment of lighting luminous density level), however pressing the programmed push-button longer (>0.8 sec.) causes lighting brightening (to the maximum level).
OFF SWITCH OFF push-button: pressing the programmed push-button shortly (<0.8 sec.) causes the lighting switches off, however pressing the programmed push-button longer (>0.8 sec.) causes lighting dimming (to the minimum level).



TIME

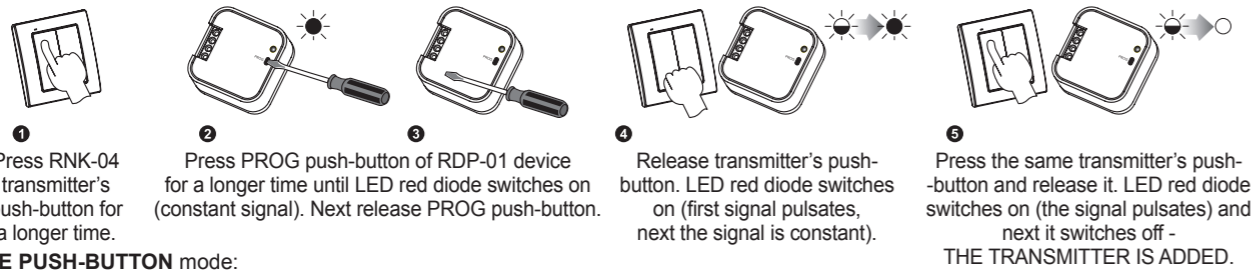
ON The device after pressing the push-button switches on according to the adjusted time (tp), then it switches off automatically. Another pressing of the push-button during time count-down causes the lighting is switched off before adjusted time finishes. Default settings - 15 seconds.

CAUTION! Adjusted time cannot be deleted.

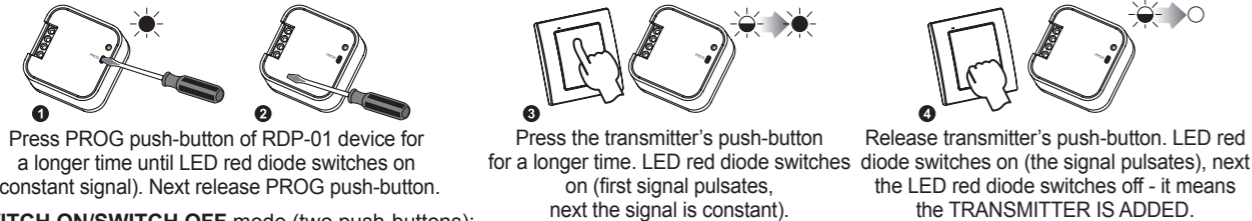


REMOTE CONTROLS PROGRAMMING

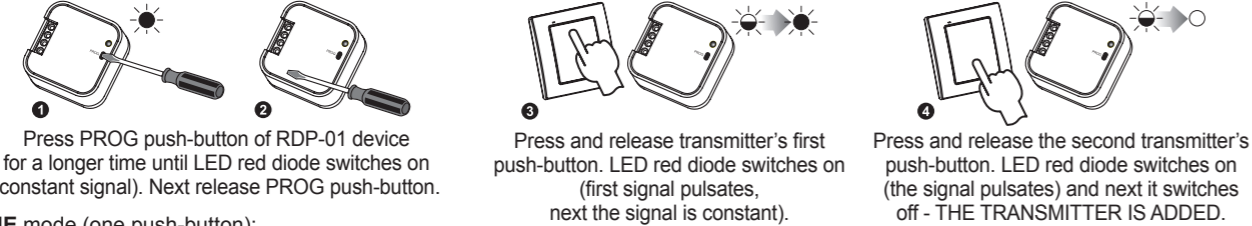
COMFORT mode:



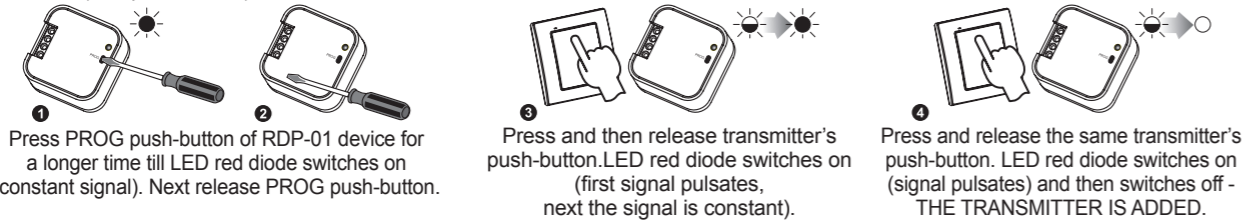
ONE PUSH-BUTTON mode:



SWITCH ON/SWITCH OFF mode (two push-buttons):



TIME mode (one push-button):



CAUTION: Every transmitter can cooperate with RDP-01 in a different mode, depending on how they were added to the device. One transmitter can be added during one programming cycle. Full memory is signalled with pulsating LED red diode.

TIME PROGRAMMING



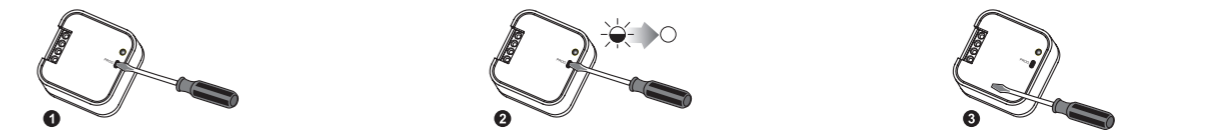
Press PROG push-button of RDP-01 device for a longer time till LED red diode switches on (constant signal). Next release PROG push-button. Wait (for about 5 seconds) till LED red diode switches on (first signal pulsates, next the signal is constant).

Press PROG push-button of RDP-01 device and then release it. LED red diode switches off and then switches on (signal pulsates). Every LED diode pulse equals 1 second.

After the adjusted time is finished (the number of LED red diode flashes) press PROG push-button and then release it - TIME IS ADDED.

Maximum time is 18 hours.

REMOTE CONTROLS DELETION



Press PROG push-button of RDP-01 device for a longer time.

After 5 seconds LED red diode switches on (signal pulsates) and then it switches off.

Release the push-button in RDP-01 - MEMORY IS DELETED.

COOPERATION AND OPERATING RANGE

Symbol	ROP-01	ROP-02	ROB-01	SRP-02	SRP-03	RWG-01	RWL-01	ROM-01	ROM-10	RDP-01	RTN-01
RNK-02	180 m	200 m	200 m	200 m	200 m	250 m	180 m	250 m	250 m	180 m	250 m
RNK-04	180 m	200 m	200 m	200 m	200 m	250 m	180 m	250 m	250 m	180 m	250 m
P-256/8	230 m	250 m	250 m	250 m	250 m	300 m	200 m	300 m	300 m	230 m	300 m
P-257/4 (2)	180 m	200 m	200 m	200 m	200 m	250 m	180 m	250 m	250 m	180 m	250 m
RNM-10	230 m	250 m	250 m	250 m	250 m	300 m	200 m	300 m	300 m	230 m	300 m
RNP-01	160 m	180 m	180 m	180 m	180 m	200 m	160 m	200 m	200 m	160 m	200 m
RNP-02	160 m	180 m	180 m	180 m	180 m	200 m	160 m	200 m	200 m	160 m	200 m
RNL-01	160 m	180 m	180 m	lack*	lack*	200 m	160 m	200 m	200 m	160 m	200 m
RTN-01	200 m	200 m	200 m	200 m	200 m	250 m	200 m	250 m	250 m	200 m	250 m
RCR-01	160 m	180 m	180 m	lack*	lack*	200 m	160 m	200 m	200 m	160 m	200 m
RTI-01	160 m	180 m	180 m	180 m	180 m	200 m	160 m	200 m	200 m	160 m	200 m
RXM-01	230 m	250 m	250 m	250 m	250 m	300 m	200 m	300 m	300 m	230 m	300 m

* - 1-channel transmitters do not cooperate with roller blind controllers.

CAUTION: The given range concerns open area - an ideal condition without any natural or artificial obstacles. If there are some obstacles between a transmitter and a receiver, it is advisable to decrease the range according to: wood and plaster: from 5 to 20 %, bricks: from 10 to 40 %, reinforced concrete: from 40 to 80 %, metal: from 90 to 100%, glass: from 10 to 20 %. Over- and underground medium and high electrical power lines, radio and television transmitters, GSM transmitters set close to a device system have also a negative influence on the range.

TRANSMITTERS			RECEIVERS		
RNK-02 2-channel button radio transmitter		RNL-01 Radio foot transmitter		ROP-01 1-channel radio receiver	
RNK-04 4-channel button radio transmitter		RTI-01 IR/EXTRA FREE transceiver		ROP-02 2-channel radio receiver	
P-256/8 8-channel remote controller		RNM-10 4-channel radio modular transmitter		RDP-01 1-channel radio dimmer	
P-257/4 4-channel remote controller		RNP-01 4-channel radio transmitter		ROB-01/12-24V Radio gate controller	
P-257/2 2-channel remote controller		RNP-02 4-channel radio transmitter		ROM-01 1-channel radio modular receiver	
RCR-01 Radio motion sensor		RXM-01 Translator RS-485/EXTRA FREE		ROM-10 2-channel radio modular receiver	
ACCESSORIES					
ANT-01 External antenna		RTN-01 Retransmitter			

X-ON Electronics

Largest Supplier of Electrical and Electronic Components

Click to view similar products for [Power Management IC Development Tools](#) category:

Click to view products by [Zamel](#) manufacturer:

Other Similar products are found below :

[EVAL6482H-DISC](#) [EVAL-AD5522EBUZ](#) [EVAL-ADM1060EBZ](#) [EVAL-ADM1073MEBZ](#) [EVAL-ADM1166TQEBZ](#) [EVAL-ADM1168LQEBZ](#) [EVAL-ADM1171EBZ](#) [EVAL-ADM1276EBZ](#) [EVB-EN5319QI](#) [EVB-EN5365QI](#) [EVB-EN6347QI](#) [EVB-EP5348UI](#) [MIC23158YML EV](#) [MIC23451-AAAYFL EV](#) [MIC5281YMME EV](#) [124352-HMC860LP3E](#) [ADM00513](#) [ADM8611-EVALZ](#) [ADM8612-EVALZ](#) [ADM8613-EVALZ](#) [ADM8615-EVALZ](#) [ADP1046ADC1-EVALZ](#) [ADP1055-EVALZ](#) [ADP122-3.3-EVALZ](#) [ADP130-0.8-EVALZ](#) [ADP130-1.2-EVALZ](#) [ADP130-1.5-EVALZ](#) [ADP130-1.8-EVALZ](#) [ADP160UJZ-REDYKIT](#) [ADP166UJ-EVALZ](#) [ADP1712-3.3-EVALZ](#) [ADP1714-3.3-EVALZ](#) [ADP1715-3.3-EVALZ](#) [ADP1716-2.5-EVALZ](#) [ADP1740-1.5-EVALZ](#) [ADP1752-1.5-EVALZ](#) [ADP1754-1.5-EVALZ](#) [ADP1828LC-EVALZ](#) [ADP1870-0.3-EVALZ](#) [ADP1871-0.6-EVALZ](#) [ADP1873-0.6-EVALZ](#) [ADP1874-0.3-EVALZ](#) [ADP1876-EVALZ](#) [ADP1879-1.0-EVALZ](#) [ADP1882-1.0-EVALZ](#) [ADP1883-0.6-EVALZ](#) [ADP197CB-EVALZ](#) [ADP199CB-EVALZ](#) [ADP2102-1.25-EVALZ](#) [ADP2102-1.2-EVALZ](#)