




HIRSCHMANN

A BELDEN BRAND

Product information CA 6 W LS

Industrial Connecting Solutions: Circular Connectors: MIL, DIN, Universal Connectors: Signal and Power (CA series): Cable plug and panel-mounted connector: CA 6 W LS

<http://www.e-catalog.beldensolutions.com/link/57078-24228-256281-256284-24359-24361-36079/en/conf/ui/state>

Name		CA 6 W LS
		
		Angled cable plug, integrated strain relief
Delivery informations		
Availability		available
Product description		
Description		Angled cable plug, integrated strain relief
Type		CA 6 W LS
Order No.		934 130-100
Number of contacts		6 + PE
Cable gland		M 22x2
Cable diameter		6 mm to 12 mm
Conductor size		max. 0.75 mm ²
Housing Color		black
Technical data		
Pin dimensions		1.5 mm
Rated voltage		AC/DC 250 V
Rated current		10 A AC/DC
Contact resistance		<= 5 mOhm
Type of termination		solder, concave pins
Material		
Contact surface material		Ag
Contact bearer material		PA 66-GF 25
Housing material		PA 66-GF 25
O-Ring		NBR
Environmental conditions		
Protection class (IEC 60529)		IP 67
Pollution severity		3
Temperature range		-40 °C to +90 °C
Inflammability class		
Flammability, UL standard		94 V-0
Approvals		
UL		UL
VDE		VDE
Packing unit		
Packaging unit		100 pieces
Scope of delivery and accessories		
Scope of delivery		1 cable plug, not assembled, assembly instructions
Accessories to order separately		can be plugged into CA 6 LD, CA 6 GD; cap CA 00 SD 1, order no. 831 530-400



HIRSCHMANN

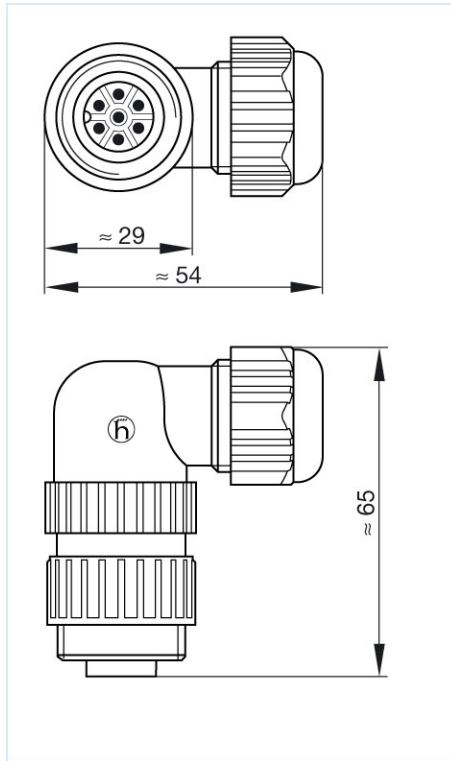
A Belden Brand

Industrial Connecting Solutions: Circular Connectors: MIL, DIN, Universal Connectors: Signal and Power (CA series): Cable plug and panel-mounted connector: CA 6 W LS

<http://www.e-catalog.beldensolutions.com/link/57078-24228-256281-256284-24359-24361-36079/en/conf/ui/state>

Picture

Drawing



Belden Deutschland GmbH

Im Gewerbepark 2
58579 Schalksmühle
Germany
Phone: +49 7127/14-1806
E-Mail: icos-sales@belden.com

The information published in the websites has been compiled as carefully as possible. It is subject to alteration without notice in technical as well as in price-related/commercial respect. The complete information and data were available on user documentation. Mandatory information can only be obtained by a concrete query.

X-ON Electronics

Largest Supplier of Electrical and Electronic Components

Click to view similar products for [Circular MIL Spec Connector](#) category:

Click to view products by [Hirschmann](#) manufacturer:

Other Similar products are found below :

[89075GULPR](#) [0025-262-542](#) [0025-264-3014](#) [58-570121-04S](#) [0134-213-1208](#) [0134-213-2209](#) [0025-258-000](#) [60-042022-07P](#) [60-042022-19P](#)
[60-042022-23P](#) [60-042217-10P](#) [0114-201-1278](#) [012-0467-000](#) [602GB06EG24-61SN](#) [0134-201-1207](#) [0134-213-1006](#) [6104-207-2302](#) [6104-](#)
[208-1902](#) [61-168211-04P](#) [61-168617-10P](#) [6131-202-19149P](#) [6131-204-21149P](#) [6131-208-13149P](#) [6131-209-17149P](#) [6131-210-11149P](#) [6131-](#)
[211-19149P](#) [6131-216-19149P](#) [6131-259-21149P](#) [6131-259-23149P](#) [6131-265-17149P](#) [6131-265-19149P](#) [CS3100A18-1P-472](#) [CS3100A-36-](#)
[77P](#) [CS3101A-16-55P](#) [CS3102A-10SL-55P](#) [CS3102A-14S-58P](#) [CS3102A-32-17P](#) [CS3102A32-25S](#) [CS3102C18-4P-472](#)
[CS3106A10SL3S004](#) [CS3106A-18-73S](#) [CS3108A-14S-52S](#) [CS3108A-28-51S](#) [6162-233-1277](#) [6162-324-1231](#) [M243082296Z](#)
[M2884010AC1S1](#) [CT0-24-10SC](#) [CT0M20-7PCAU](#) [M28840/17AC1G3](#)