

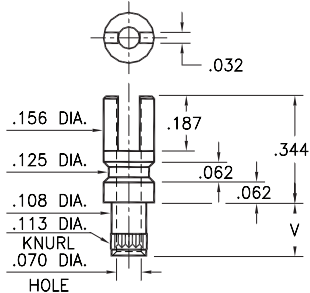
# MALE PCB PINS

## SOLDER TERMINALS SLOTTED

### 2715

2715-X-01-XX-00-00-07-0

Swage mount in .116 hole

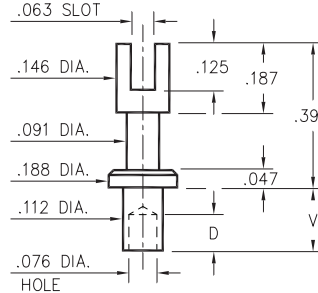


Basic Part Number	Board Thickness	Length V
2715-2	.062	.109
2715-3	.094	.141
2715-4	.125	.172

### 2809

2809-X-01-XX-00-00-07-0

Swage mount in .116 hole

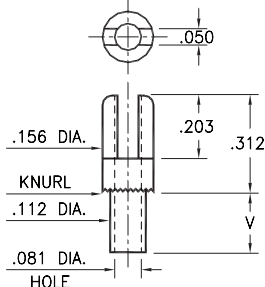


Basic Part Number	Board Thickness	Length V	Depth D
2809-1	.031	.078	.068
2809-2	.062	.109	.098
2809-3	.094	.141	.098
2809-4	.125	.172	.098

### 2701

2701-X-01-XX-00-00-07-0

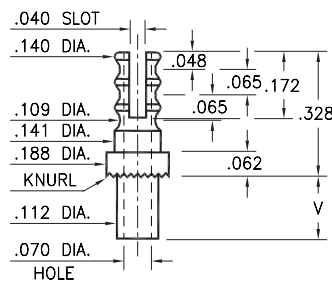
Swage mount in .116 hole



### 2808

2808-X-01-XX-00-00-07-0

Swage mount in .116 hole

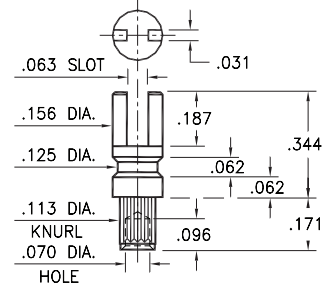


Basic Part Number	Board Thickness	Length V
2XXX-1	.031	.075
2XXX-2	.062	.105
2XXX-3	.094	.135
2XXX-4	.125	.165

### 2762

2762-4-01-XX-00-00-07-0

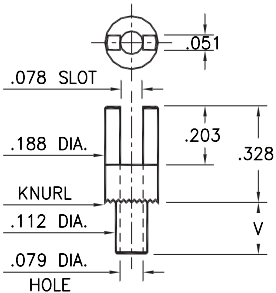
Swage mount in .116 hole  
For a .125 thick board



### 2807

2807-X-01-XX-00-00-07-0

Swage mount in .116 hole

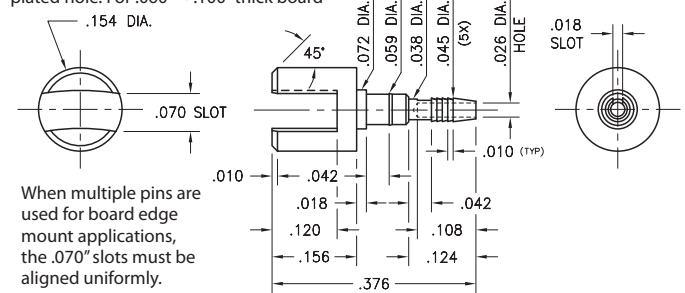


Basic Part Number	Board Thickness	Length V
2807-1	.031	.078
2807-2	.062	.109
2807-3	.094	.140
2807-4	.125	.171

### 3622

3622-0-32-15-00-00-03-0

Slotted compliant tail press-fit in .040 ± .003 plated hole. For .060" → .100" thick board



When multiple pins are used for board edge mount applications, the .070" slots must be aligned uniformly.

#### SPECIFICATIONS:

**Pin Material:** Brass Alloy 360, 1/2 Hard  
(Swage pins are annealed)

**Dimensions:** Inches

**Tolerances On:** Lengths: ± .005  
Diameters: ± .002  
Angles: ± 2°



ORDER CODE: **XXXX - X - XX - XX - 00 - 00 - 07 - 0**

BASIC PART #

SPECIFY PIN FINISH:

Part #3622 plating ONLY

- 01 200 μ" TIN/LEAD OVER NICKEL
- 15 10 μ" GOLD OVER NICKEL (RoHS)
- 80 200 μ" TIN OVER NICKEL (RoHS)
- 44 300 μ" SILVER OVER COPPER (RoHS)
- 50 300 μ" ELECTRO-SOLDER (60/40 SnPb)



## X-ON Electronics

Largest Supplier of Electrical and Electronic Components

*Click to view similar products for [Terminals](#) category:*

*Click to view products by [Mill-Max](#) manufacturer:*

Other Similar products are found below :

[HT-13-10](#) [71M-250-32-NB](#) [01-2065-1-0216](#) [00581P0075](#) [M10-10RX](#) [M10BCK](#) [60205-1](#) [604200-1](#) [60598-1-CUT-TAPE](#) [60617-1-C](#) [60873-1](#) [M14-516R/SK](#) [M14-6RSX](#) [M18-10FLX](#) [M18-8FBX](#) [M18-8R/LX](#) [M18BCK](#) [61314-6-C](#) [61-S](#) [61-SN-A](#) [62-NBM-A](#) [63-S](#) [640179-1](#) [640917-2-CUT-TAPE](#) [6501550002](#) [66107-2-C](#) [66107-4-C](#) [696683-1](#) [696834-1](#) [696861-1](#) [696931-1](#) [696999-1](#) [M8-516RK](#) [M86700006](#) [MA250DMFMX-A](#) [701-2007](#) [701-2307](#) [701-7761-03](#) [70F-110-32-PB](#) [718-N-A](#) [71M-187-20-NBL](#) [71M-250-32-NBL](#) [72F-187-20-NBL](#) [72M-250-32-NBL](#) [7310](#) [73F-250-32](#) [73F-250-32-NBL](#) [73F-250-32-NL](#) [F14-10C](#) [F-1M](#)