

Technical specification:

Rated voltage: 3pos 4pos
IEC 61076-2-104 60 V 30 V

Current rating: 3 A bei 40°C
IEC 61076-2-104

Insulation resistance: $\geq 100 \text{ M}\Omega$
IEC 60512

Pollution degree: 3/2
IEC 60664-1

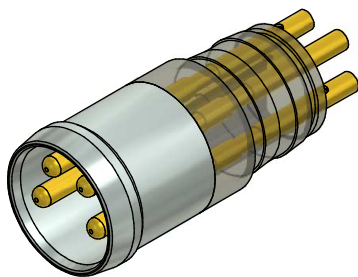
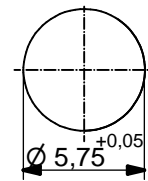
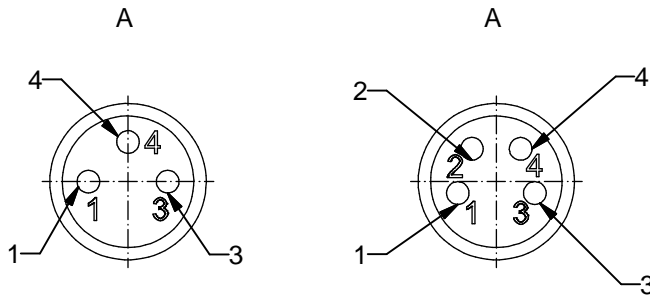
Degree of protection: IP 67, in mated condition
IEC 60529

Temperature range: -30°C ... +85°C
IEC 60664-1

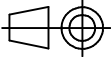

Mating cycles: ≥ 100
IEC 60512-9a

Materials:

Contact: CuZn
Contact plating: Nickel, gold plated
Contact carrier: PA, UL 94
Socket housing: CuZn, Nickel plated



Part no:	Description:	Pos
42-01002	SAL - 8 - ESTM3 - L	3
42-01003	SAL - 8 - ESTM4 - L	4

DO NOT ALTER CAD DRAWING BY HAND Directive 2002/95/EC RoHS compliant	Index: a 02.03.11 fro Ä3914 Data sheet revised	 dim. in mm	title: Male socket M8x1 with soldering version	
				date name
		drawn 15.10.08 Fromm		dwg no: 42K1A111
		appd. 15.10.08 Mankopf		
THIS DRAWING MAY NOT BE COPIED OR REPRODUCED IN ANY WAY, AND MAY NOT BE PASSED ON TO A THIRD PARTY WITHOUT WRITTEN PERMISSION. OWNERSHIP AND COPYRIGHT OF CONEC GmbH				

X-ON Electronics

Largest Supplier of Electrical and Electronic Components

Click to view similar products for [Circular MIL Spec Connector](#) category:

Click to view products by [CONEC](#) manufacturer:

Other Similar products are found below :

[89075GULPR](#) [0025-262-542](#) [0025-264-3014](#) [58-570121-04S](#) [0134-213-1208](#) [0134-213-2209](#) [0025-258-000](#) [60-042022-07P](#) [60-042022-19P](#)
[60-042022-23P](#) [60-042217-10P](#) [0114-201-1278](#) [012-0467-000](#) [602GB06EG24-61SN](#) [0134-201-1207](#) [0134-213-1006](#) [6104-207-2302](#) [6104-](#)
[208-1902](#) [61-168211-04P](#) [61-168617-10P](#) [6131-202-19149P](#) [6131-204-21149P](#) [6131-208-13149P](#) [6131-209-17149P](#) [6131-210-11149P](#) [6131-](#)
[211-19149P](#) [6131-216-19149P](#) [6131-259-21149P](#) [6131-259-23149P](#) [6131-265-17149P](#) [6131-265-19149P](#) [CS3100A18-1P-472](#) [CS3100A-36-](#)
[77P](#) [CS3101A-16-55P](#) [CS3102A-10SL-55P](#) [CS3102A-14S-58P](#) [CS3102A-32-17P](#) [CS3102A32-25S](#) [CS3102C18-4P-472](#)
[CS3106A10SL3S004](#) [CS3106A-18-73S](#) [CS3108A-14S-52S](#) [CS3108A-28-51S](#) [6162-233-1277](#) [6162-324-1231](#) [M243082296Z](#)
[M2884010AC1S1](#) [CT0-24-10SC](#) [CT0M20-7PCAU](#) [M28840/17AC1G3](#)