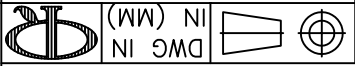


REV	DESCRIPTION	ENGR	DATE
F	SEE ECN #1168 FOR CHANGES	SK	05.19.06
E	SEE ECN #892 FOR CHANGES	SM	12.14.04
D	SEE ECN #547 FOR CHANGES	SM	12.20.02
C	SEE ECN #526 FOR CHANGES	SM	11.21.02
B	CHANGED DIM "A" (SEE ENGINEERING)	SM	11.01.01
A	CHANGED FILE NO. AND TITLE BLOCK	SM	10.03.01

TOLERANCES UNLESS NOTED
 .XX=±.010
 .XXX=±.005
 FRACTION=1/64
 ANG=±1°

FILE #	LED2M	DWN: D.D.	APP:
MAT'L:	SEE NOTES	DT: 05-20-96	DT:
RE:	RICHCO, INC.	RICHCO INC. PO BOX 804238, CHICAGO, 60680 (773) 539-4060	

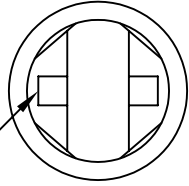
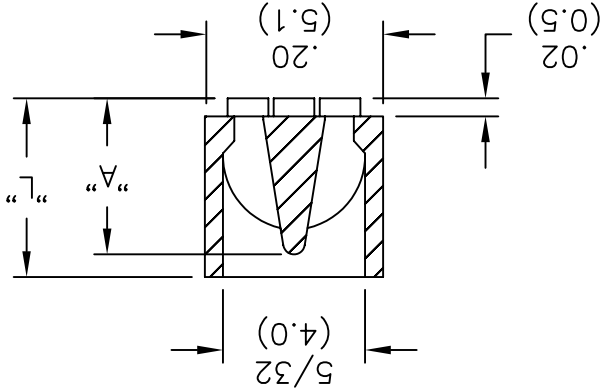
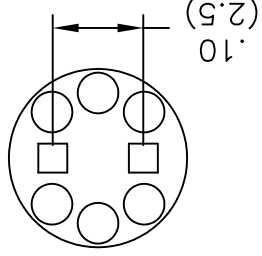
PRINT TYPE	CA
PART #	SEE TABLE
DWG IN (MM)	FINAL



TITLE:

LED SPACER

- NOTES:
- MATERIAL: NYLON 6/6 UL 94 V-2 (RMS-01).
 - COLOR: NATURAL
 - FOR T-1 3/4 LED'S.



.032 (0.8) SQ.

PART NUMBER	"L" ±.010 (±0.25)	"A" REF.
LED2M-.120-01	.12 (3.1)	.08 (2.0)
LED2M-.140-01	.14 (3.6)	
LED2M-.160-01	.16 (4.1)	
LED2M-.180-01	.18 (4.5)	
LED2M-.200-01	.20 (5.1)	
LED2M-.220-01	.22 (5.6)	
LED2M-.240-01	.24 (6.1)	
LED2M-.250-01	.25 (6.4)	
LED2M-.260-01	.26 (6.6)	.20 (5.1)
LED2M-.280-01	.28 (7.1)	
LED2M-.300-01	.30 (7.8)	
LED2M-.340-01	.34 (8.6)	
LED2M-.360-01	.36 (9.1)	
LED2M-.380-01	.38 (9.7)	
LED2M-.400-01	.40 (10.2)	
LED2M-.420-01	.42 (10.7)	
LED2M-.450-01	.45 (11.4)	.33 (8.4)
LED2M-.460-01	.46 (11.7)	
LED2M-.550-01	.55 (14.0)	
LED2M-.600-01	.60 (15.2)	
LED2M-.650-01	.65 (16.5)	
LED2M-.850-01	.85 (21.6)	
LED2M-.900-01	.90 (22.9)	
LED2M-.900-01	.70 (17.8)	

X-ON Electronics

Largest Supplier of Electrical and Electronic Components

Click to view similar products for [LED Mounting Hardware](#) category:

Click to view products by [Richco](#) manufacturer:

Other Similar products are found below :

[00624500](#) [00624250](#) [00624375](#) [00624750](#) [7047](#) [990-4901-010](#) [990-8115-001](#) [SPC040](#) [CMP22](#) [CNX_440_X02_4_1_06](#)
[CNX_460_E02_4_1_12](#) [CNX440-X02-4-2-24](#) [M16-T1](#) [L2K-L4GD](#) [L2K-L5XL](#) [LDN51-125SL/BT](#) [RNG-190](#) [515-0005F](#) [CM00624625](#)
[CNX440E034612](#) [CNX_460_E02_4_1_04](#) [FS108NA](#) [7046](#) [7056](#) [S202-K2](#) [T50RS5.NB3P](#) [KT4TN](#) [SN3486](#) [M16-T2-S](#) [RTN_441](#) [ELM 2-](#)
[1.5MM](#) [LEDM-2-11](#) [ELM 3-1.500](#) [CM00624375](#) [CM00624375](#) [CM00624900](#) [CNX410-056-X-4-2-24](#) [HLMP-0103](#) [RNG234](#) [FIX-LEDH-](#)
[10.5](#) [FIX-LEDH-11](#) [FIX-LEDH-11.5](#) [FIX-LEDH-12](#) [FIX-LEDH-14](#) [FIX-LEDH-18](#) [FIX-LEDH-4](#) [FIX-LEDH-4.5](#) [FIX-LEDH-7.5](#) [FIX-](#)
[LEDT-11](#) [FIX-LEDT-20](#)