

Dual-in-line Switches for SMT

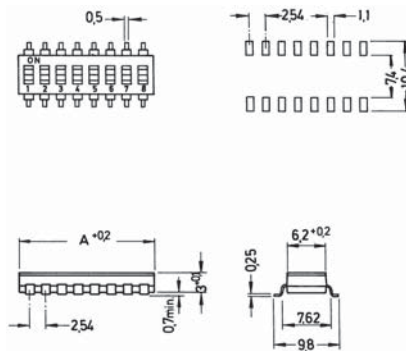
Specifications:

Contact rating:	24 V DC, 25 mA / 6 V DC, 100 mA
Contact resistance:	< 50 mΩ
Insulation resistance:	> 100 MΩ at 500 V DC
Dielectric strength:	500 V, 50 Hz for the duration of 1 minute
Operating temperature:	-40 °C to +85 °C
Mechanical life:	minimum 2 000 operations per pole
Material:	PPS meets UL 94 V-0
Contacts:	gold-plated over nickel
Construction:	case sealed, slide recessed, front sealed with protective tape
Mounting:	on pc-board – SMD
Slide position:	OFF

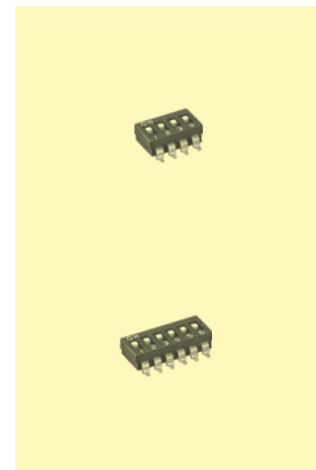
Models:

Series SBS 1000

Type	Poles	Length (A)
SBS 1001	1	3.48 mm
SBS 1002	2	6.02 mm
SBS 1003	3	8.56 mm
SBS 1004	4	11.10 mm
SBS 1005	5	13.64 mm
SBS 1006	6	16.18 mm
SBS 1007	7	18.72 mm
SBS 1008	8	21.26 mm
SBS 1009	9	23.80 mm
SBS 1010	10	26.34 mm
SBS 1012	12	31.42 mm

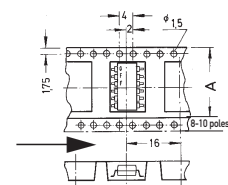


washable



Packing: sticks or tapes
 for order on tapes: additional to type number: T
 example of order: SBS 1002 T

Models:	Stick	Tape/Reel	Tape width (A)
SBS 1001	—	800 pieces; Ø 330 mm	16.0 mm
SBS 1002	76 pieces	900 pieces; Ø 330 mm	16.0 mm
SBS 1003	55 pieces	900 pieces; Ø 330 mm	24.0 mm
SBS 1004	42 pieces	900 pieces; Ø 330 mm	24.0 mm
SBS 1005	35 pieces	900 pieces; Ø 330 mm	24.0 mm
SBS 1006	28 pieces	900 pieces; Ø 330 mm	24.0 mm
SBS 1007	25 pieces	900 pieces; Ø 330 mm	32.0 mm
SBS 1008	22 pieces	900 pieces; Ø 330 mm	32.0 mm
SBS 1009	20 pieces	900 pieces; Ø 330 mm	44.0 mm
SBS 1010	18 pieces	900 pieces; Ø 330 mm	44.0 mm
SBS 1012	15 pieces	900 pieces; Ø 330 mm	44.0 mm



X-ON Electronics

Largest Supplier of Electrical and Electronic Components

Click to view similar products for [DIP Switches/SIP Switches](#) category:

Click to view products by [Knitter-Switch](#) manufacturer:

Other Similar products are found below :

[78M03S](#) [79B10T](#) [8136-475G4T](#) [G7G-1A2-CB-DC12](#) [A7SS-M](#) [DBP 2110](#) [DBP 2112](#) [DBS1008](#) [DHN02FTVTR](#) [DHN10T](#) [DHS108](#)
[DPL08TN](#) [DRD16CSE04](#) [DRR4010](#) [DRR60016](#) [DRS4016](#) [BD06E](#) [1825008-1](#) [1825444-1](#) [25.350.0653.0](#) [LA2-DC12](#) [SBS 5004 TG](#)
[SDA10H1BDA](#) [97R06ST](#) [A2C-2A5](#) [1825444-7](#) [ADE08SA04](#) [ADE12S04](#) [2161391-1](#) [2-1825058-8](#) [CCVA 2.5/ 4-G-5.08](#) [P26THRR32](#)
[25.330.0653.1](#) [25.352.0353.0](#) [MDG305ST](#) [IKN0600000](#) [IKN0800000](#) [LA2-002-DC24](#) [DBP2008](#) [DBS1003](#) [DBS2008](#) [438872000](#)
[DRD10CRAE04](#) [DRS1604](#) [DSR02T](#) [DSS 208 N](#) [5-1825033-1](#) [106-SDN06-EV](#) [1-1437507-6](#) [E2FMX2D1M1TGJ03M](#)
[E3ZMCT81M1TJ03M](#)