



ISSUE 12; August 2012 - RoHS 2011/65/EU



### Description

- Standard 7 x 5 crystal oscillators
- Ceramic package with a seam sealed metal lid, hermetically sealed
- Stock parts available
- Fast Make capability: CFPP-72 series programmable oscillators are the nearest equivalent fast make model
- MEMS capability: IQMS-500 series oscillators are the nearest equivalent MEMS model

### Frequency Range

- Frequency 0.5 to 100.0 MHz

### Supply Voltage

- Voltage 5.0V ±10%

### Ageing

- Ageing ±3ppm per year max

### Output Compatibility & Load

- Output Compatibility HCMOS/TTL

Maximum Capacitive Load	
0.5MHz to 50MHz	50pF max
>50MHz to 80MHz	30pF max
>80MHz to 160MHz	15pF max

### Frequency Stabilities

- Frequency Stability ±25ppm, ±50ppm, ±100ppm (inclusive of supply voltage and output load variations over the operating temperature range)

### Operating Temperature Ranges

- 0 to 70°C
- 40 to 85°C

### Output Control

- Standby Operation
  - Logic '1' (>70% VS) to pad 1 enables oscillator output
  - Logic '0' (<30% VS) to pad 1 disables oscillator output; the oscillator output goes to the high impedance state
  - No connection to pad 1 enables oscillator output
  - Standby Current: 10µA max

### Environmental Parameters

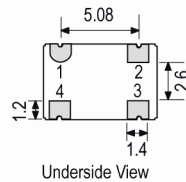
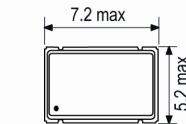
- Shock: MIL-STD-202, Method 213, Condition E
- Vibration: MIL-STD-883, Method 2007, Condition A
- Storage Temperature Range: -55 to 125°C

### Packing Details

- Pack Style: **Bulk** Loose in bulk pack  
Pack Size 100
- Pack Style: **Reel** Tape and reel in accordance with EIA-481-D  
Pack Size 1,000
- Alternative packing options available

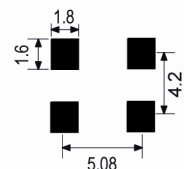


### Outline (mm)

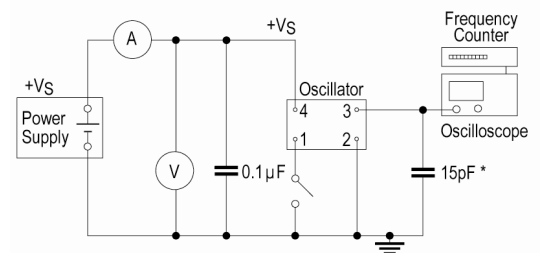


- Pad Connections
- Standby Operation
  - GND
  - Output
  - +VS

### Solder Pad Layout



### Test Circuit



\* Inclusive of jiggging and equipment capacitance

### Sales Office Contact Details:

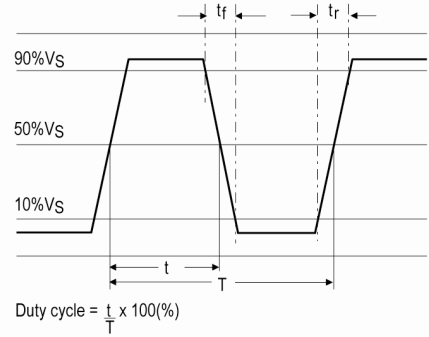
UK: +44 (0)1460 270200  
Germany: +49 (0)7264 9145-0

France: +33 (0)5 34 50 91 18  
USA: +1 (0) 650 798 5047

Email: [info@iqdfrequencyproducts.com](mailto:info@iqdfrequencyproducts.com)  
Web: [www.iqdfrequencyproducts.com](http://www.iqdfrequencyproducts.com)



**Wave Form**



**Electrical Specification - maximum limiting values 5.0V ±10%**

Frequency Range	Temp Range	Stability Inclusive		Current Draw	Rise & Fall (10 to 90%)	Duty Cycle %
		Min	Max			
0.5 to 20.0MHz	0 to 70°C	±25ppm	±100ppm	20.0mA	10ns	45/55
	-40 to 85°C	±25ppm	±100ppm	20.0mA	10ns	45/55
20.000001 to 35.0MHz	0 to 70°C	±25ppm	±100ppm	30.0mA	6ns	45/55
	-40 to 85°C	±25ppm	±100ppm	30.0mA	6ns	45/55
35.000001 to 70.0MHz	0 to 70°C	±25ppm	±100ppm	50.0mA	6ns	45/55
	-40 to 85°C	±25ppm	±100ppm	50.0mA	6ns	45/55
70.000001 to 100.0MHz	0 to 70°C	±25ppm	±100ppm	70.0mA	6ns	45/55
	-40 to 85°C	±25ppm	±100ppm	70.0mA	6ns	45/55

*This document was correct at the time of printing; please contact your local sales office for the latest version*

**Sales Office Contact Details:**

UK: +44 (0)1460 270200  
Germany: +49 (0)7264 9145-0

France: +33 (0)5 34 50 91 18  
USA: +1 (0) 650 798 5047

Email: [info@iqdfrequencyproducts.com](mailto:info@iqdfrequencyproducts.com)  
Web: [www.iqdfrequencyproducts.com](http://www.iqdfrequencyproducts.com)

## X-ON Electronics

Largest Supplier of Electrical and Electronic Components

*Click to view similar products for [Standard Clock Oscillators](#) category:*

*Click to view products by [IQD](#) manufacturer:*

Other Similar products are found below :

[EP1400SJTSC-125.000M](#) [601137](#) [601252](#) [CSX750FBC-24.000M-UT](#) [CSX750FBC-33.333M-UT](#) [CSX750FCC-3.6864M-UT](#) [F335-12](#) [F335-25](#) [F535L-50](#) [DSC506-03FM2](#) [ASA-20.000MHZ-L-T](#) [ASA-25.000MHZ-L-T](#) [ASA-27.000MHZ-L-T](#) [ASV-20.000MHZ-LR-T](#) [ECS-2018-160-BN-TR](#) [EL13C7-H2F-125.00M](#) [MXO45HS-2C-66.6666MHZ](#) [NBXDBB017LN1TAG](#) [NBXHBA019LN1TAG](#) [SiT1602BI-22-33E-50.000000E](#) [SIT8003AC-11-33S-2.04800X](#) [SiT8256AC-23-33E-156.250000X](#) [SIT8918AA-11-33S-50.000000G](#) [SM4420TEV-40.0M-T1K](#) [SMA4306-TL-H](#) [F335-24](#) [F335-40](#) [F335-50](#) [F535L-10](#) [F535L-12](#) [F535L-16](#) [F535L-24](#) [F535L-27](#) [F535L-48](#) [PE7744DW-100.0M](#) [CSX750FBC-20.000M-UT](#) [CSX-750FBC33333000T](#) [CSX750FBC-4.000M-UT](#) [CSX750FBC-7.3728M-UT](#) [CSX750FBC-8.000M-UT](#) [CSX-750FCC14745600T](#) [CSX750FCC-16.000M-UT](#) [CSX-750FCC40000000T](#) [CSX750FCC-4.000M-UT](#) [ASA-22.000MHZ-L-T](#) [ASA2-26.000MHZ-L-T](#) [ASA-40.000MHZ-L-T](#) [ASA-48.000MHZ-L-T](#) [ASA-60.000MHZ-L-T](#) [ASF1-3.686MHZ-N-K-S](#)