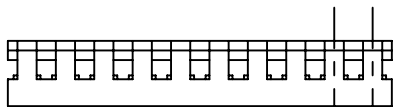
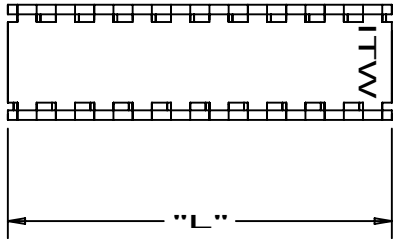


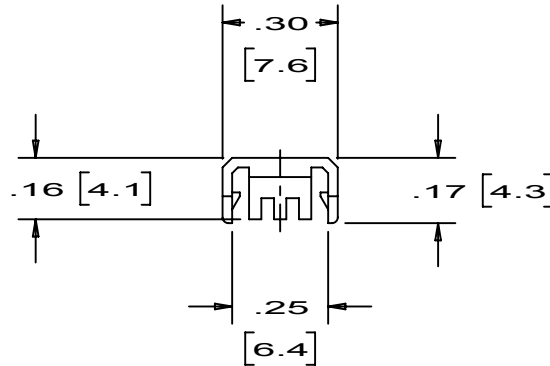
THIS COPY IS PROVIDED ON A RESTRICTED BASIS AND IS NOT TO BE USED IN ANY WAY DETRIMENTAL TO THE INTERESTS OF PANCON.

NOTES:

1. ALL DIMENSIONS ARE GIVEN IN INCHES & [MILLIMETERS].



.100 (TYP)
[2.54]




								 www.pancon.de / GERMANY www.panconconnectors.com / USA		Bolingbrook, Illinois	
								MAS-CON[®], .100" SOCKET STRAIN RELIEF COMBINATION COVER			
								UNLESS OTHERWISE SPECIFIED, DIMENSIONAL TOLERANCES ARE: (.X) ± ---- (.XXX) ± .005[.12] (.XX) ± .02[.5] ANGLES ±		UNLESS OTHERWISE SPECIFIED, ALL DIMENSIONS ARE GIVEN IN INCHES. THIRD ANGLE PROJECTION. SCALE	
								DRAWN BY DDU		MAT'L NYLON	
								DATE 3/11/86			
6		KI		Added RoHS Compliant		2162			DRAWING NO. KA-10341		DWG. A SIZE
REV	DATE	BY	CHK	DESCRIPTION		CN - R	CUST	SUP	SHT 1 OF 2		
									CHK'D WHB		

THIS COPY IS PROVIDED ON A RESTRICTED BASIS AND IS NOT TO BE USED IN ANY WAY DETRIMENTAL TO THE INTERESTS OF PANCON.

No. OF CIRCUITS	PART No.	PACK CODES	DIM. "L" IN. [MM]	WT./100 PCS. LBS. (GRAMS)
2	SCC100F-2	-D	.20 [5.1]	.02 (9)
3	SCC100F-3	-D	.30 [7.6]	.03 (13)
4	SCC100F-4	-D	.40 [10.2]	.04 (18)
5	SCC100F-5	-D	.50 [12.7]	.05 (22)
6	SCC100F-6	-C	.60 [15.2]	.06 (27)
7	SCC100F-7	-C	.70 [17.8]	.07 (31)
8	SCC100F-8	-C	.80 [20.3]	.08 (36)
9	SCC100F-9	-C	.90 [22.9]	.09 (40)
10	SCC100F-10	-C	1.00 [25.4]	.10 (45)
11	SCC100F-11	-C	1.10 [27.9]	.11 (49)
12	SCC100F-12	-C	1.20 [30.5]	.12 (54)
13	SCC100F-13	-C	1.30 [33.0]	.13 (59)
14	SCC100F-14	-C	1.40 [35.6]	.14 (63)
15	SCC100F-15	-C	1.50 [38.1]	.15 (68)
16	SCC100F-16	-C	1.60 [40.6]	.16 (72)
17	SCC100F-17	-C	1.70 [43.2]	.17 (77)
18	SCC100F-18	-C	1.80 [45.7]	.18 (81)
19	SCC100F-19	-C	1.90 [48.3]	.19 (86)
20	SCC100F-20	-C	2.00 [50.8]	.20 (90)
21	SCC100F-21	-C	2.10 [53.3]	.21 (95)
22	SCC100F-22	-C	2.20 [55.9]	.22 (99)
23	SCC100F-23	-C	2.30 [58.4]	.23 (104)
24	SCC100F-24	-C	2.40 [61.0]	.24 (108)
25	SCC100F-25	-C	2.50 [63.5]	.25 (113)
26	SCC100F-26	-C	2.60 [66.0]	.26 (117)
27	SCC100F-27	-C	2.70 [68.6]	.27 (122)
28	SCC100F-28	-C	2.80 [71.1]	.28 (127)

PACK CODES
C = 100 / PER BAG
D = 500 / PER BAG



								 Bolingbrook, Illinois	
								MAS-CON®, .100" SOCKET STRAIN RELIEF COMBINATION COVER	
				UNLESS OTHERWISE SPECIFIED, DIMENSIONAL TOLERANCES ARE: (.X) ± ----(.XXX) ± (.XX) ± .02[.5] ANGLES ± .005[.12]				UNLESS OTHERWISE SPECIFIED, ALL DIMENSIONS ARE GIVEN IN INCHES. THIRD ANGLE PROJECTION. SCALE 2:1	
				DRAWN BY DDU				MAT'L NYLON	
				DATE 3/11/86				DRAWING NO. KA-10341	
				CHK'D WHB				SHT 2 OF 2 DWG. SIZE A	
6		KI		See Sh. 1		2162			
REV	DATE	BY	CHK	DESCRIPTION		CN - R	CUST	SUP	

X-ON Electronics

Largest Supplier of Electrical and Electronic Components

Click to view similar products for [Standard Card Edge Connectors](#) category:

Click to view products by [Pancon](#) manufacturer:

Other Similar products are found below :

[6565204-6](#) [1489165-4](#) [EBT156-12B1X](#) [EBT15622B2X](#) [EBT156-22R2W](#) [1-582587-1](#) [1-582589-1](#) [284-0102-12100](#) [306022901000000](#) [307-012-502-202](#) [307-024-526-201](#) [307-056-520-300](#) [307-080-526-208](#) [1926088-2](#) [245-062-520-350](#) [287-0032-12101](#) [306-010-500-112](#) [306-028-525-102](#) [306-240-318](#) [307-036-502-202](#) [307-036-521-301](#) [307-072-526-202](#) [345-060-559-303](#) [368-004-520-201](#) [392-008-559-201](#) [534671-1](#) [5-530501-5](#) [341-240-317](#) [345-029-520-300](#) [345-030-500-301](#) [345-044-500-300](#) [345-220-058](#) [346-240-318](#) [357-030-526-201](#) [387-012-523-300](#) [395-100-524-300](#) [50-12B-10](#) [50-6SN-5](#) [09-07-2032](#) [10035388-106LF](#) [10035388-802LF](#) [10115859-011LF](#) [10122859-009LF](#) [101269333204245CLF](#) [10127905-B04B24BLF](#) [530555-1](#) [EB63-S0C3540X](#) [5145409-2](#) [2007209-1](#) [0458440005](#)