

## Data Sheet

### Surface Mounted Triple Socket with 2 Power Sockets and 1 Power Double USB Socket

Item-no. 67324000 (BP)

Item-no.: 67324500 (SP)

02.10.2014

Voltage range: max. 24 Volt  
Current load: max. 20 Ampere with 12 Volt and 2,5 mm<sup>2</sup> cable  
max. 16 Ampere with 12 Volt and 1,5 mm<sup>2</sup> cable  
max. 10 Ampere with 24 Volt and 1,5 mm<sup>2</sup>

#### Material Triple Socket:

Housing: Polycarbonat  
Temperature stress: max. 135°C  
Contact: Metal socket

#### USB Socket:

Input voltage: 8 - 34 Volt  
Output voltage : 5 Volt  
Output current max.: 5 A (2 x 2,5 A)  
Input current duration: 4,4 A (2 x 2,2 A)  
Current consumption: < 5 mA (open circuit operation)  
Overvoltage protection: yes  
Protection against overheating: yes  
Reverse voltage protection: yes

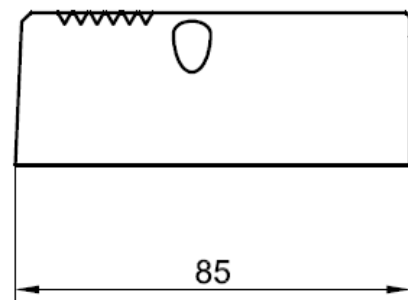
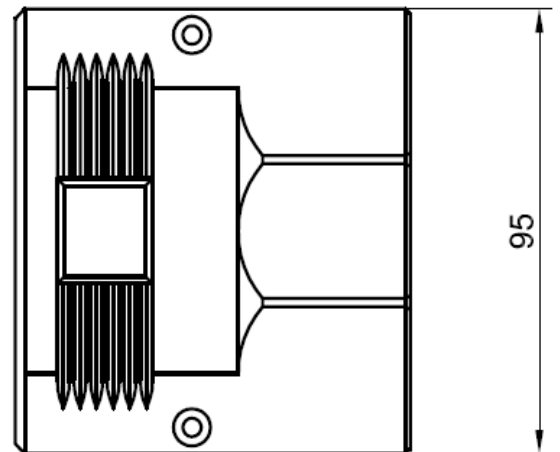
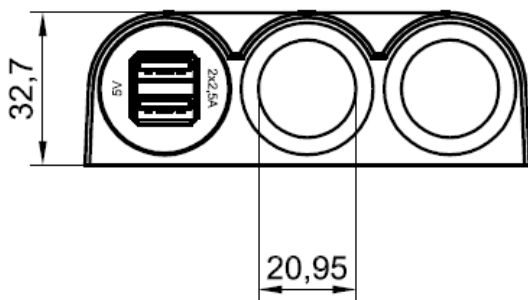
**Surface Mounted Triple Socket with  
2 Power Sockets and 1 Power Double USB Socket**

Item-no. 67324000 (BP

Item-no.: 67324500 (SP)

)

02.10.2014



## X-ON Electronics

Largest Supplier of Electrical and Electronic Components

*Click to view similar products for [Standard Circular Connector](#) category:*

*Click to view products by [Pro Car](#) manufacturer:*

Other Similar products are found below :

[C015](#) [10F006](#) [001](#) [1](#) [5M2530B10P](#) [600247N007](#) [600259N006](#) [600273N007](#) [600432N009](#) [6280-2PG-519](#) [6280-3PG-311](#) [6280-3SG-311](#)  
[6280-7SG-3DC](#) [6280-7SG-522](#) [6282-5PG-311](#) [6282-6PG-519](#) [6282-8SG-311](#) [6283-11](#) [6283-15](#) [6290](#) [6293](#) [6382-2PG-311](#) [6382-2PG-3DC](#)  
[6382-2SG-321](#) [6382-2SG-3DC](#) [6382-4SG-516](#) [67-03E20-37P](#) [681-PMG](#) [CXC3106A1811S](#) [CXS3102A14S2P](#) [CXS3102A181S](#)  
[CXS3106A14S6S](#) [D38999/20FC8SA](#) [L/C](#) [MB12P-1](#) [MB12R-6](#) [7251-2PG-300](#) [7251-2SG-300](#) [7251-4PG-300](#) [7251-4SG-300](#) [7251-5PG-300](#)  
[7251-5SG-300](#) [7251-6SG-300](#) [7251-7PG-300](#) [7251-8PG-300](#) [7271-6SG-300](#) [7282-3PG-300-CH3](#) [73000005663](#) [75-190011-03P](#) [75-190216-08S](#) [75-190218-10P](#) [75-214636-52P](#) [75-474118-10P](#) [75-474211-03P](#)