

# SKM50GD125D



## SEMITRANS® 6

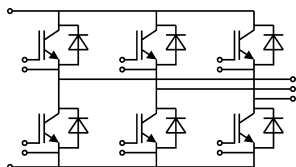
### SKM50GD125D

#### Features

- $V_{CE(sat)}$  with positive temperature coefficient
- High short circuit capability, self limiting to  $6 \times I_{Cnom}$
- Fast & soft inverse CAL diodes
- Large clearance (10 mm) and creepage distances (20 mm)
- Isolated copper baseplate using DBC Technology (Direct Copper Bonding)
- UL recognized, file no. E63532

#### Typical Applications\*

- Three phase inverters for AC motor speed control
- Pulse frequencies also above 15 kHz
- DC servo and robot drives



GD

Absolute Maximum Ratings				
Symbol	Conditions	Values	Unit	
<b>IGBT</b>				
$V_{CES}$	$T_j = 25\text{ °C}$	1200	V	
$I_C$	$T_j = 150\text{ °C}$	$T_c = 25\text{ °C}$	73	A
		$T_c = 80\text{ °C}$	50	A
$I_{Cnom}$		50	A	
$I_{CRM}$	$I_{CRM} = 2 \times I_{Cnom}$	100	A	
$V_{GES}$		-20 ... 20	V	
$t_{psc}$	$V_{CC} = 600\text{ V}$	$T_j = 125\text{ °C}$	10	$\mu\text{s}$
	$V_{GE} \leq 15\text{ V}$			
	$V_{CES} \leq 1200\text{ V}$			
$T_j$		-55 ... 150	$^{\circ}\text{C}$	
<b>Inverse diode</b>				
$I_F$	$T_j = 150\text{ °C}$	$T_c = 25\text{ °C}$	77	A
		$T_c = 80\text{ °C}$	53	A
$I_{Fnom}$		55	A	
$I_{FRM}$	$I_{FRM} = 2 \times I_{Fnom}$	110	A	
$I_{FSM}$	$t_p = 10\text{ ms, sin } 180^{\circ}, T_j = 25\text{ °C}$	720	A	
$T_j$		-40 ... 150	$^{\circ}\text{C}$	
<b>Module</b>				
$I_{t(RMS)}$	$T_{terminal} = 80\text{ °C}$	100	A	
$T_{stg}$		-40 ... 125	$^{\circ}\text{C}$	
$V_{isol}$	AC sinus 50 Hz, $t = 1\text{ min}$	4000	V	

Characteristics					
Symbol	Conditions	min.	typ.	max.	Unit
<b>IGBT</b>					
$V_{CE(sat)}$	$I_C = 50\text{ A}$ $V_{GE} = 15\text{ V}$ chipelevel	$T_j = 25\text{ °C}$	3.20	3.70	V
		$T_j = 125\text{ °C}$	3.60	4.20	V
$V_{CE0}$	chipelevel	$T_j = 25\text{ °C}$	1.5	1.75	V
		$T_j = 125\text{ °C}$	1.7	1.95	V
$r_{CE}$	$V_{GE} = 15\text{ V}$ chipelevel	$T_j = 25\text{ °C}$	34.00	39.00	$\text{m}\Omega$
		$T_j = 125\text{ °C}$	38.00	45.00	$\text{m}\Omega$
$V_{GE(th)}$	$V_{GE} = V_{CE}, I_C = 2\text{ mA}$	4.5	5.5	6.5	V
$I_{CES}$	$V_{GE} = 0\text{ V}$ $V_{CE} = 1200\text{ V}$	$T_j = 25\text{ °C}$	0.1	0.3	$\text{mA}$
					$\text{mA}$
$C_{ies}$	$V_{CE} = 25\text{ V}$ $V_{GE} = 0\text{ V}$	$f = 1\text{ MHz}$	3.3		$\text{nF}$
$C_{oes}$		$f = 1\text{ MHz}$	0.50		$\text{nF}$
$C_{res}$		$f = 1\text{ MHz}$	0.22		$\text{nF}$
$Q_G$	$V_{GE} = -8\text{ V} \dots +20\text{ V}$		442		$\text{nC}$
$R_{Gint}$	$T_j = 25\text{ °C}$		0.00		$\Omega$
$t_{d(on)}$	$V_{CC} = 600\text{ V}$ $I_C = 50\text{ A}$	$T_j = 125\text{ °C}$	25		$\text{ns}$
$t_r$	$V_{GE} = \pm 15\text{ V}$	$T_j = 125\text{ °C}$	19		$\text{ns}$
$E_{on}$	$R_{Gon} = 8\text{ }\Omega$	$T_j = 125\text{ °C}$	8		$\text{mJ}$
$t_{d(off)}$	$R_{Goff} = 8\text{ }\Omega$	$T_j = 125\text{ °C}$	184		$\text{ns}$
$t_f$		$T_j = 125\text{ °C}$	8		$\text{ns}$
$E_{off}$		$T_j = 125\text{ °C}$	3.2		$\text{mJ}$
$R_{th(j-c)}$	per IGBT			0.32	$\text{K/W}$



**SEMITRANS® 6**

## SKM50GD125D

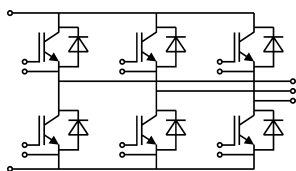
### Features

- $V_{CE(sat)}$  with positive temperature coefficient
- High short circuit capability, self limiting to  $6 \times I_{cnom}$
- Fast & soft inverse CAL diodes
- Large clearance (10 mm) and creepage distances (20 mm)
- Isolated copper baseplate using DBC Technology (Direct Copper Bonding)
- UL recognized, file no. E63532

### Typical Applications\*

- Three phase inverters for AC motor speed control
- Pulse frequencies also above 15 kHz
- DC servo and robot drives

Characteristics						
Symbol	Conditions		min.	typ.	max.	Unit
<b>Inverse diode</b>						
$V_F = V_{EC}$	$I_F = 55 \text{ A}$ $V_{GE} = 0 \text{ V}$ chipllevel	$T_j = 25 \text{ }^\circ\text{C}$		2.00	2.50	V
		$T_j = 125 \text{ }^\circ\text{C}$		1.80	2.30	V
$V_{F0}$	chipllevel	$T_j = 25 \text{ }^\circ\text{C}$		1.1	1.45	V
		$T_j = 125 \text{ }^\circ\text{C}$		0.85	1.2	V
$r_F$	chipllevel	$T_j = 25 \text{ }^\circ\text{C}$		16.4	19.1	m $\Omega$
		$T_j = 125 \text{ }^\circ\text{C}$		17.3	20.0	m $\Omega$
$I_{RRM}$	$I_F = 50 \text{ A}$	$T_j = 125 \text{ }^\circ\text{C}$		75		A
$Q_{rr}$	$di/dt_{off} = 3200 \text{ A}/\mu\text{s}$	$T_j = 125 \text{ }^\circ\text{C}$		7		$\mu\text{C}$
$E_{rr}$	$V_{GE} = \pm 15 \text{ V}$ $V_{CC} = 600 \text{ V}$	$T_j = 125 \text{ }^\circ\text{C}$		2.1		mJ
$R_{th(j-c)}$	per diode				0.6	K/W
<b>Module</b>						
$L_{CE}$					60	nH
$R_{CC'+EE'}$	terminal-chip	$T_C = 25 \text{ }^\circ\text{C}$				m $\Omega$
		$T_C = 125 \text{ }^\circ\text{C}$				m $\Omega$
$R_{th(c-s)}$	per module				0.05	K/W
$M_s$	to heat sink M6		4		5	Nm
$M_t$						Nm
						Nm
$w$					175	g



**GD**

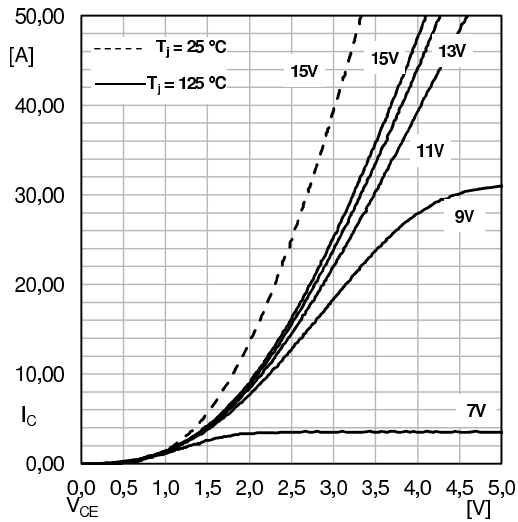


Fig. 1: Typ. output characteristic, inclusive  $R_{CC'+EE'}$

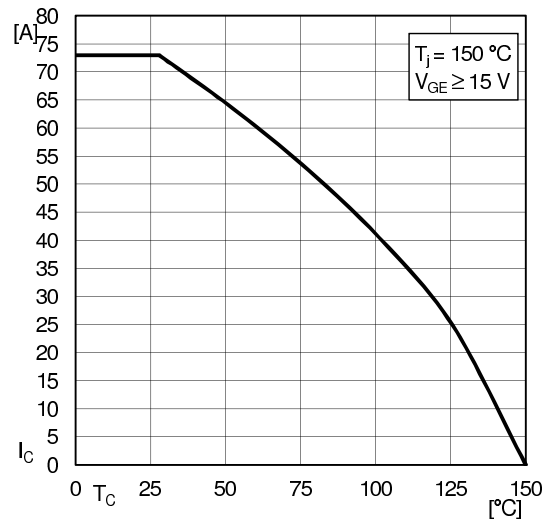


Fig. 2: Rated current vs. temperature  $I_c = f(T_C)$

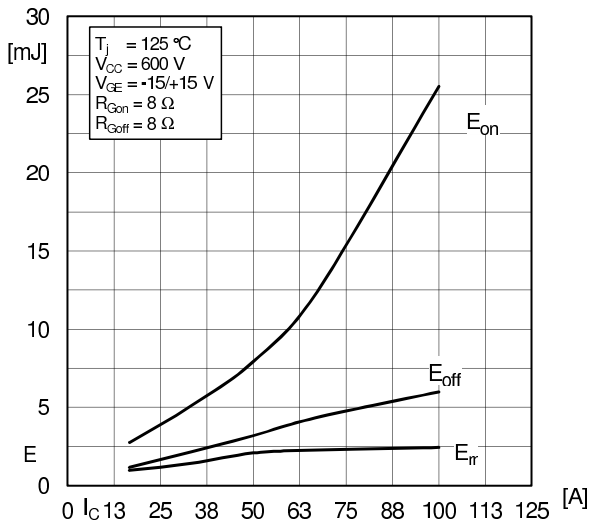


Fig. 3: Typ. turn-on /-off energy =  $f(I_c)$

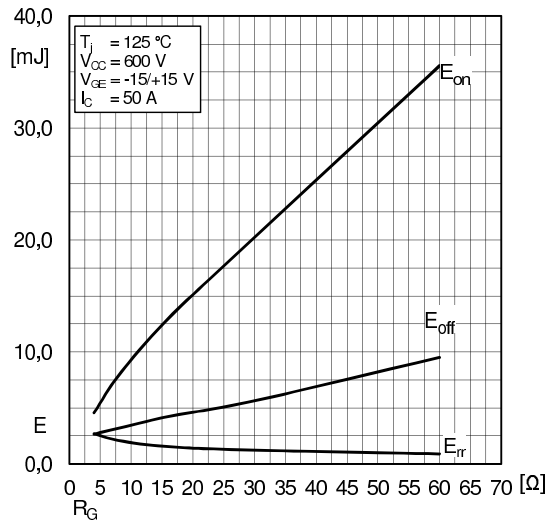


Fig. 4: Typ. turn-on /-off energy =  $f(R_G)$

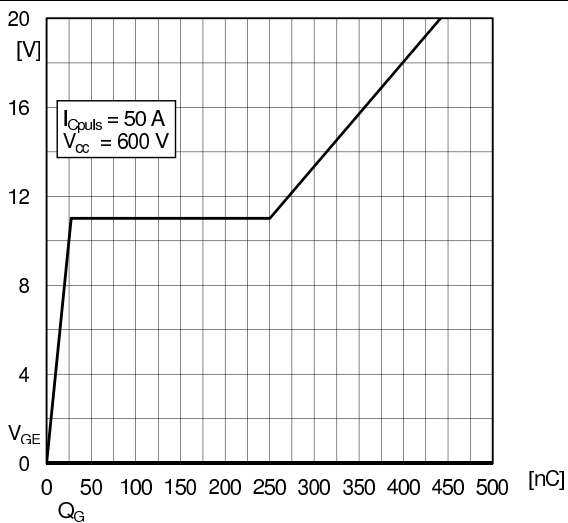


Fig. 6: Typ. gate charge characteristic

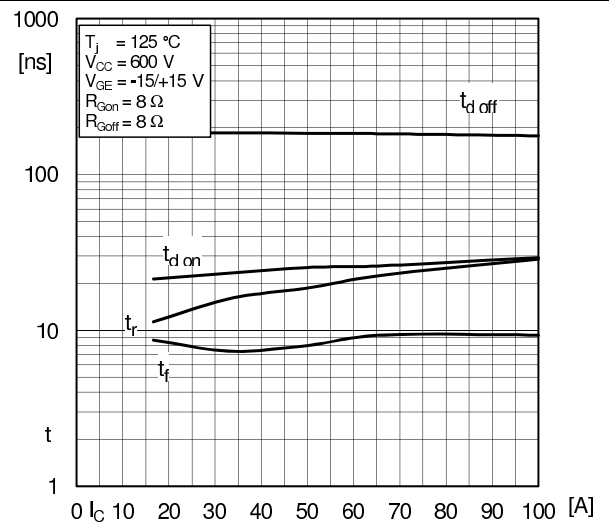


Fig. 7: Typ. switching times vs.  $I_c$

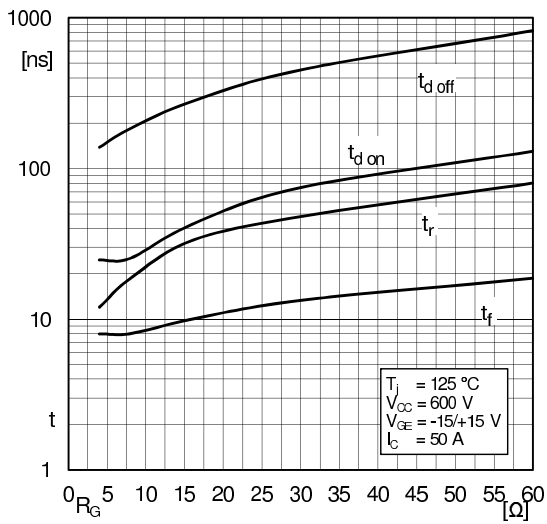


Fig. 8: Typ. switching times vs. gate resistor  $R_G$

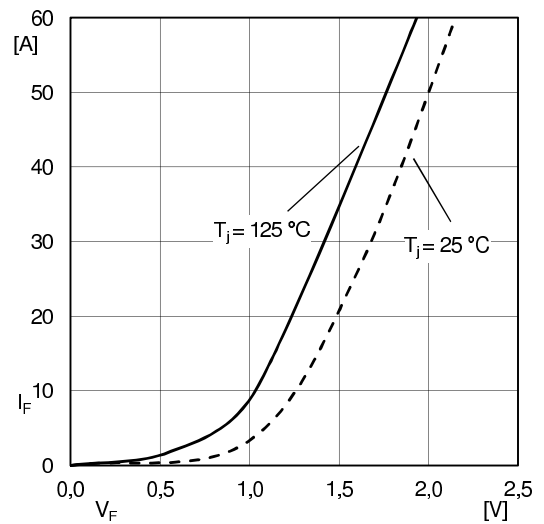
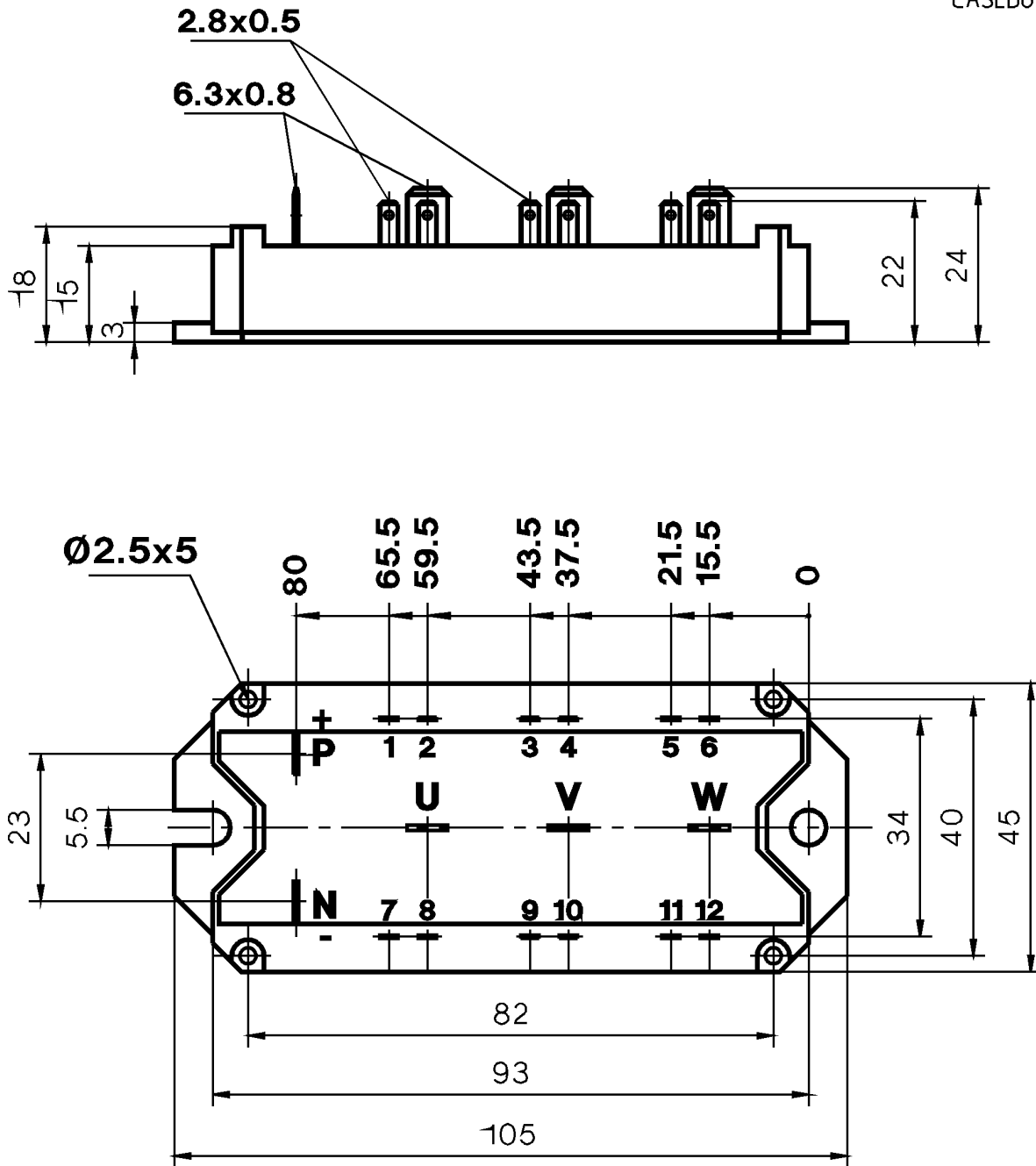
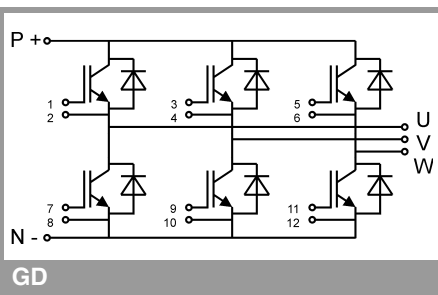


Fig. 10: Typ. CAL diode forward charact., incl.  $R_{CC'+EE'}$



SEMTRANS 6



This is an electrostatic discharge sensitive device (ESDS), international standard IEC 60747-1, Chapter IX

\* The specifications of our components may not be considered as an assurance of component characteristics. Components have to be tested for the respective application. Adjustments may be necessary. The use of SEMIKRON products in life support appliances and systems is subject to prior specification and written approval by SEMIKRON. We therefore strongly recommend prior consultation of our staff.

## X-ON Electronics

Largest Supplier of Electrical and Electronic Components

*Click to view similar products for [IGBT Modules category](#):*

*Click to view products by [Semikron manufacturer](#):*

Other Similar products are found below :

[F3L100R07W2E3\\_B11](#) [F3L15R12W2H3\\_B27](#) [F3L400R07ME4\\_B22](#) [F3L400R12PT4\\_B26](#) [F4-100R12KS4](#) [F4-50R07W2H3\\_B51](#) [F4-75R12KS4\\_B11](#) [FB15R06W1E3](#) [FB20R06W1E3\\_B11](#) [FD1000R33HE3-K](#) [FD300R06KE3](#) [FD300R12KE3](#) [FD300R12KS4\\_B5](#) [FD400R12KE3](#) [FD400R33KF2C-K](#) [FD401R17KF6C\\_B2](#) [FD-DF80R12W1H3\\_B52](#) [FF100R12KS4](#) [FF1200R17KE3\\_B2](#) [FF150R12KE3G](#) [FF200R06KE3](#) [FF200R06YE3](#) [FF200R12KT3](#) [FF200R12KT3\\_E](#) [FF200R12KT4](#) [FF200R17KE3](#) [FF300R06KE3\\_B2](#) [FF300R12KE4\\_E](#) [FF300R12KS4HOSA1](#) [FF300R12ME4\\_B11](#) [FF300R12MS4](#) [FF300R17ME4](#) [FF450R12ME4P](#) [FF450R17IE4](#) [FF600R12IE4V](#) [FF600R12IP4V](#) [FF800R17KP4\\_B2](#) [FF900R12IE4V](#) [MIXA30W1200TED](#) [MIXA450PF1200TSF](#) [FP06R12W1T4\\_B3](#) [FP100R07N3E4](#) [FP100R07N3E4\\_B11](#) [FP10R06W1E3\\_B11](#) [FP10R12W1T4\\_B11](#) [FP10R12YT3](#) [FP10R12YT3\\_B4](#) [FP150R07N3E4](#) [FP15R12KT3](#) [FP15R12W2T4](#)