

mat'l. code		SEE NOTES		tolerance		ISO 1302		ISO 406 ISO 1101		projection		product family		BSTIK HDR	
litr ecn no		date		tolerances unless otherwise specified		mm		scale 1:4		title		HEADER SR, SMT, POLARIZED		sheet 1 of 1 size	
H F-23055		AMA 16.01.15		angles		linear				F04-0362 JCO		04.12.10		D F06-0208 JCO	
D F06-0208 JCO		06.06.22		dr		L.MULIN		99.04.28		E F08-0148 RTR		08.03.31		engr JMC	
F F10-0207 JCO		10.09.09		chr				99.04.28		G B-18983 LMU		14.10.03		appp JMC	
revision		sheet		index		sheet		revision		sheet		index		sheet	

- a - PLATING: "LF" MEANS THE PRODUCT IS LEAD-FREE, 2µm MINIMUM MATTE TIN OVER 1.27µm MINIMUM NICKEL UNDERPLATE.
- b - MANUFACTURING PROCESS COMPATIBILITY THE HOUSING WILL WITHSTAND EXPOSURE TO 260°C PEAK TEMPERATURE FOR 30 SECONDS IN A CONVECTION, INFRA-RED OR VAPOR PHASE REFLOW OVEN.
- c - LABELING: MEETS PACKAGING SPECS AS PER GS-14-920
- d - LEGAL STATEMENT: SEE GS-47-0004

- NOTES:
- 1 - HOUSING MAT'L : HIGH TEMPERATURE THERMOPLASTIC. UL94V-0 COLOR: BLACK
 - 2 - PIN MATERIAL : PHOSPHOR BRONZE
 - 3 - PACKAGING = POLY BAGS
 - 4 - A = TAPE & REEL + CAP, AS AVAILABLE
 - 5 - 9N MIN RETENTION IN EITHER DIRECTION
 - 6 - TO DETERMINE DIMENSIONS : N = NUMBER OF POSITIONS EXAMPLE : 8 POS N x 2.54 = 20.32mm
 - 7 - ROHS COMPATIBLE PRODUCT SPECIFICATIONS

PRODUCT NUMBER 98400-YXXXLF

RoHS COMPATIBLE, SEE NOTE 6

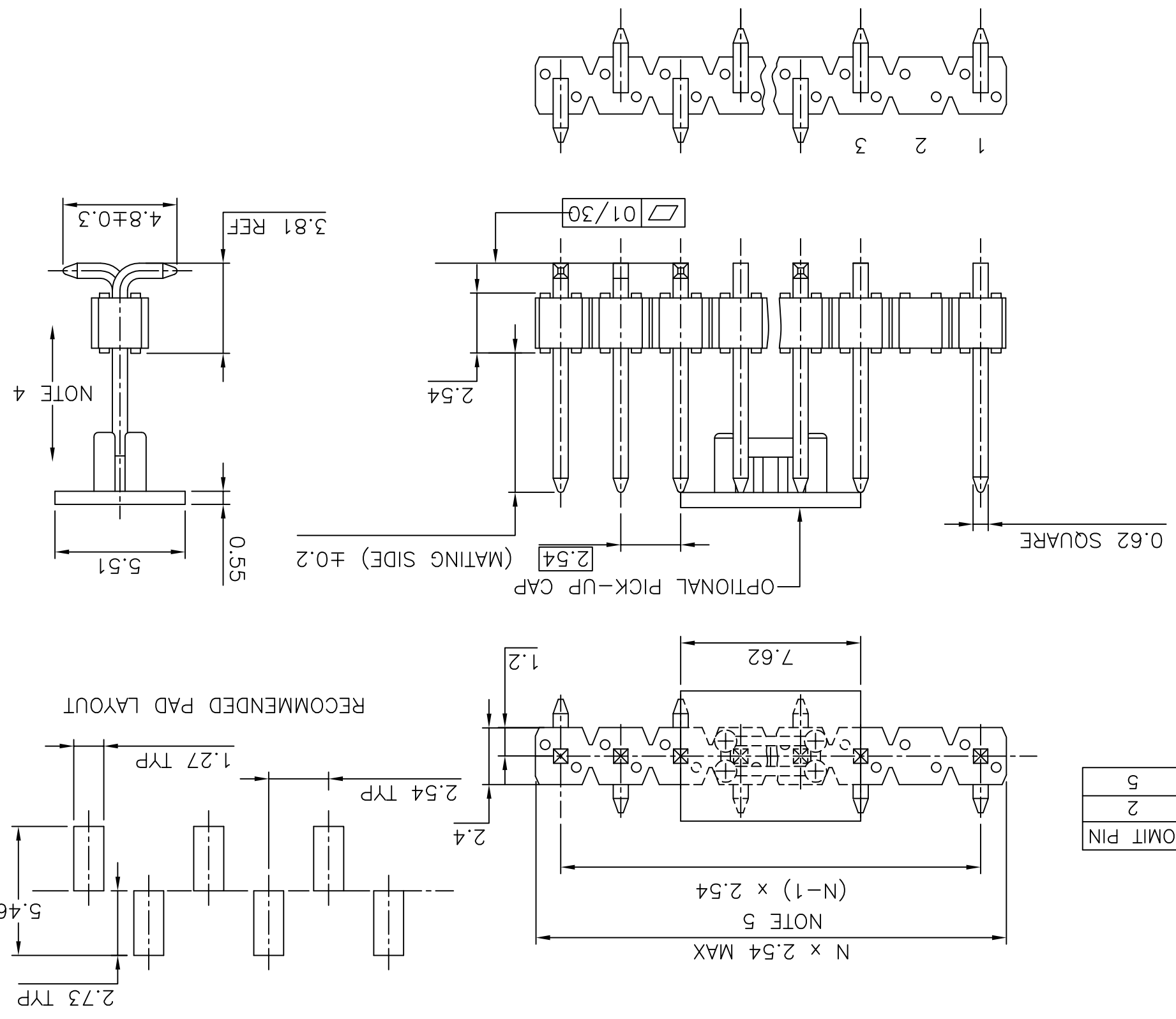
PACKAGING TYPE, NOTE 3

PLATING

1 = 0.76µm GOLD/GXT ON CONTACT AREA, 2µm TIN MIN ON TAILS

1.27µm NICKEL MIN UNDERLAYER FOR ALL PLATING VERSIONS

STYLE	SIZE	MATING	OMIT PIN
01	1x08	5.9	2
02	1x08	5.9	5



FCIconnect.com

Copyright FCI

X-ON Electronics

Largest Supplier of Electrical and Electronic Components

Click to view similar products for [Headers & Wire Housings](#) category:

Click to view products by [FCT Electronics](#) manufacturer:

Other Similar products are found below :

[95000-104TRLF](#) [10135584-644402LF](#) [DF62W-EP2022PCA](#) [95000-106TRLF](#) [DF62W-2022SCA](#) [DF62W-EP2022PC](#) [2203348](#) [DF62W-2022SC](#) [1084018](#) [1029039](#) [1084017](#) [802-10-012-10-002000](#) [1112640](#) [1112639](#) [891-007-9SS-BST1T](#) [000-34000](#) [0008550134](#) [0009482033](#) [0009507031](#) [57102-F02-18ULF](#) [57102-S06-03LF](#) [57202-S52-04LF](#) [PCN6-15S-2.5E](#) [0039019024](#) [58102-G61-06LF](#) [582553-1](#) [0009485154](#) [0009508121](#) [0022285053](#) [0050291907](#) [018731A](#) [LY20-4P-DT1-P1E-BR](#) [02.125.8002.8](#) [60101931](#) [60598-1 \(Cut Strip\)](#) [M1625-3R/100](#) [61062-3](#) [61082-181009](#) [CSU011177004](#) [636-1427](#) [638009-1](#) [641938-9](#) [641991-4](#) [644168-1](#) [644827-2](#) [647662-1](#) [65039-019ELF](#) [65692-001LF](#) [65781-018](#) [65781-047](#)