

## Hinged-Cover Junction Boxes

### Continuous Hinge with Clamps, Type 12



#### Industry Standards

UL 50, 50E Listed; Type 12, 13; File No. E27567  
cUL Listed per CSA 22.2 No. 94; Type 12, 13; File No. E27567  
UL 508A Listed; Type 12, 13; File No. E61997  
cUL Listed per CSA 22.2 No. 94; Type 12, 13; File No. E61997

NEMA/EEMAC Type 12 and 13  
CSA, File No. 42184: Type 12  
IEC 60529, IP65

#### Application

This easy-to-open, continuous hinge enclosure features screw-down clamps for secure closure and can be used in a wide variety of applications.

#### Standard Product

Catalog Number	AxBxCin./mm	Gauge	UL Listed	Panel	Conductive Panel	Panel Size D x E in./mm	Mounting G x H in./mm	Overall L x W in./mm	F in./mm	J in./mm	J in. mm/in.	K in. mm/in.	P in. mm/in.	T in. mm/in.	V in. mm/in.	Y in. mm/in.			
A404CH	4.00 x 4.00 x 3.00	16	508A	No Panel	No Panel	No Panel	4.75 x 2.00	5.50 x 4.94	—	2.62	66	14	35	76	—	—	—		
	102 x 102 x 76																	No Panel	121 x 51
A604CH	6.00 x 4.00 x 3.00	16	508A	A6P4	A6P4G	4.88 x 2.88	6.75 x 2.00	7.50 x 4.94	2.53	2.62	66	14	60	76	8	14	—	—	
	152 x 102 x 76																		124 x 73
A806CH	8.00 x 6.00 x 3.50	14	50, 50E	A8P6	A8P6G	6.75 x 4.88	8.75 x 4.00	9.50 x 6.94	3.03	3.12	79	14	25	127	6	16	—	—	—
	203 x 152 x 89																		
A4044CH	4.00 x 4.00 x 4.00	16	508A	No Panel	No Panel	No Panel	4.75 x 2.00	5.50 x 4.94	—	3.62	92	14	35	76	—	—	—	—	—
	102 x 102 x 102																		
A6044CH	6.00 x 4.00 x 4.00	16	508A	A6P4	A6P4G	4.88 x 2.88	6.75 x 2.00	7.50 x 4.94	3.53	3.62	92	14	60	76	8	14	—	—	—
	152 x 102 x 102																		
A606CH	6.00 x 6.00 x 4.00	16	50, 50E	A6P6	A6P6G	4.88 x 4.88	6.75 x 4.00	7.50 x 6.94	3.53	3.62	92	14	60	127	8	14	—	—	—
	152 x 152 x 102																		
A808CH	8.00 x 8.00 x 4.00	14	50, 50E	A8P8	A8P8G	6.75 x 6.88	8.75 x 6.00	9.50 x 8.94	3.53	3.62	92	14	25	178	6	16	—	—	—
	203 x 203 x 102																		
A1008CH	10.00 x 8.00 x 4.00	14	50, 50E	A10P8	A10P8G	8.75 x 6.88	10.75 x 6.00	11.50 x 8.94	3.53	3.62	92	14	25	178	6	16	—	—	—
	254 x 203 x 102																		
A1008CHS	10.00 x 8.00 x 4.00	14	50, 50E	A10P8	A10P8G	8.75 x 6.88	10.75 x 6.00	11.50 x 8.94	3.53	3.62	92	14	25	178	6	16	—	—	—
	254 x 203 x 102																		
A12064CH	12.00 x 6.00 x 4.00	14	50, 50E	A12P6	A12P6G	10.75 x 4.88	12.75 x 4.00	13.50 x 6.94	3.53	3.62	92	14	25	127	6	16	—	—	—
	305 x 152 x 102																		
A1210CH	12.00 x 10.00 x 5.00	14	50, 50E	A12P10	A12P10G	10.75 x 8.88	12.75 x 8.00	13.50 x 10.94	4.53	4.62	117	14	25	229	6	16	—	—	—
	305 x 254 x 127																		
A1210CHS	12.00 x 10.00 x 5.00	14	50, 50E	A12P10	A12P10G	10.75 x 8.88	12.75 x 8.00	13.50 x 10.94	4.53	4.62	117	14	25	229	6	16	—	—	—
	305 x 254 x 127																		
A8066CH	8.00 x 6.00 x 6.00	14	50, 50E	A8P6	A8P6G	6.75 x 4.88	8.75 x 4.00	9.50 x 6.94	5.53	5.62	143	14	25	127	6	16	—	—	—
	203 x 152 x 152																		
A10086CH	10.00 x 8.00 x 6.00	14	50, 50E	A10P8	A10P8G	8.75 x 6.88	10.75 x 6.00	11.50 x 8.94	5.53	5.62	143	14	25	178	6	16	—	—	—
	254 x 203 x 152																		
A10106CH	10.00 x 10.00 x 6.00	14	50, 50E	A10P10	A10P10G	8.75 x 8.88	10.75 x 8.00	11.50 x 10.94	5.53	5.62	143	14	25	229	6	16	—	—	—
	254 x 254 x 152																		
A1212CH	12.00 x 12.00 x 6.00	14	50, 50E	A12P12	A12P12G	10.75 x 10.88	12.75 x 10.00	13.50 x 12.94	5.53	5.62	143	14	25	279	6	16	—	—	—
	305 x 305 x 152																		
A14086CH	14.00 x 8.00 x 6.00	14	50, 50E	A14P8	A14P8G	12.75 x 6.88	14.75 x 6.00	15.50 x 8.94	5.53	5.62	143	14	25	178	6	16	—	—	—
	356 x 203 x 152																		
A1412CH	14.00 x 12.00 x 6.00	14	50, 50E	A14P12	A14P12G	12.75 x 10.88	14.75 x 10.00	15.50 x 12.94	5.53	5.62	143	14	25	279	6	16	—	—	—
	356 x 305 x 152																		
A1412CHS	14.00 x 12.00 x 6.00	14	50, 50E	A14P12	A14P12G	12.75 x 10.88	14.75 x 10.00	15.50 x 12.94	5.53	5.62	143	14	25	279	6	16	—	—	—
	356 x 305 x 152																		

#### Specifications

- 16 gauge or 14 gauge steel (see table)
- Seams continuously welded and ground smooth
- Continuous hinge
- External screw clamps are quick and easy to operate
- Bonding provision on door
- External wall-mounting brackets
- Oil-resistant gasket
- Weldnuts provided for mounting optional panels and terminal block kits in size 6.00 x 4.00 in. (152 x 102 mm) and larger

#### Finish

ANSI 61 gray polyester powder paint inside and out

#### Accessories

See also Accessories.

Clamp Kits

Fast-Operating Clamp-Cover Junction Box Clamp

Lock Kit for Clamp Cover Junction Boxes

Panels for Junction Boxes

Junction Box and Wall-Mount Enclosure Swing Out Panel Kit

#### Modification and Customization

Hoffman excels at modifying and customizing products to your specifications. Contact your local Hoffman sales office or distributor for complete information.

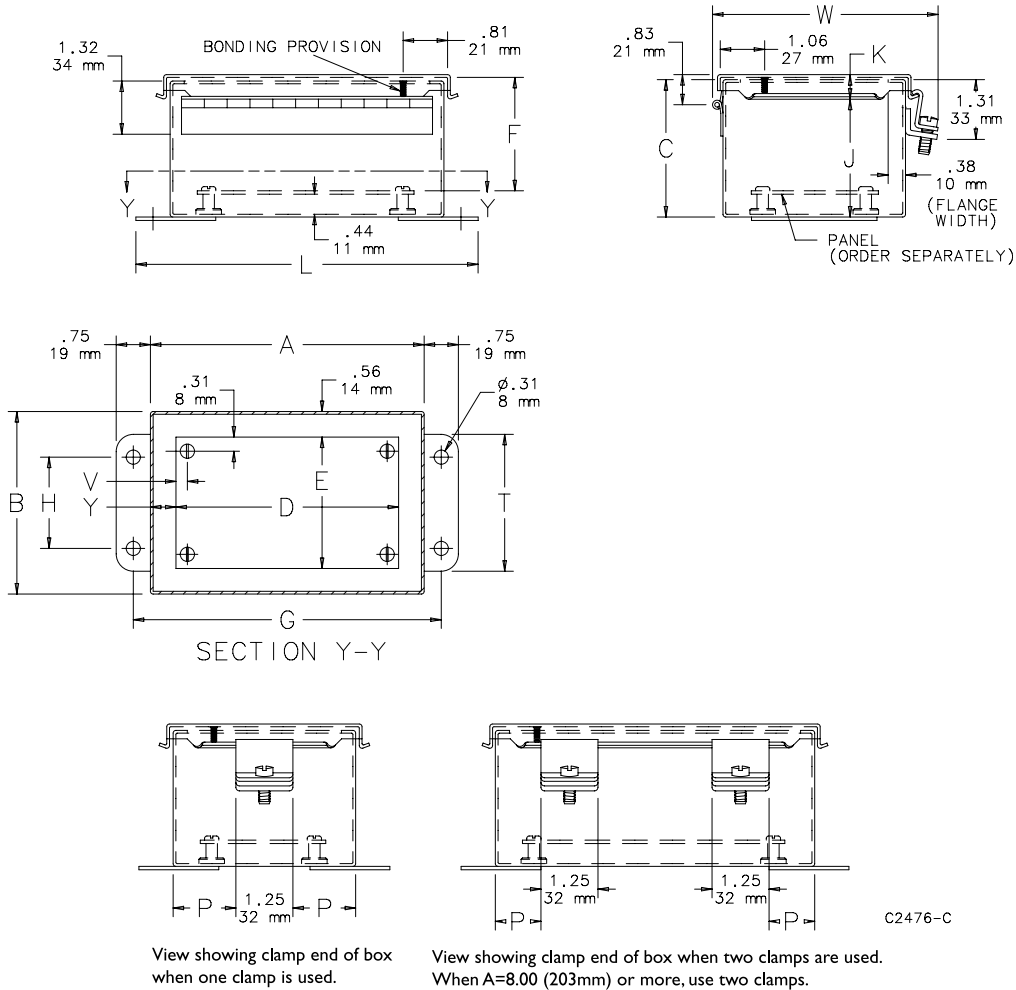
Bulletin: A51CH

## Hinged-Cover Junction Boxes

Catalog Number	AxBxC in./mm	Gauge	UL Listed	Panel	Conductive Panel	Panel Size	Mounting	Overall	F	J	J.in.	K	P	T	V	Y
						D x E	G x H	L x W								
						in./mm	in./mm	in./mm	in./mm	in./mm	mm/in.	mm/in.	mm/in.	mm/in.	mm/in.	mm/in.
A16106CH	16.00 x 10.00 x 6.00	14	50, 50E	A16P10	A16P10G	14.75 x 8.88	16.75 x 8.00	17.50 x 10.94	5.53	5.62	143	14	25	229	6	16
	406 x 254 x 152					375 x 226	425 x 203	445 x 278	140		0.56	1.00	9.00	0.25	0.62	
A1614CH	16.00 x 14.00 x 6.00	14	50, 50E	A16P14	A16P14G	14.75 x 12.88	16.75 x 12.00	17.50 x 14.94	5.53	5.62	143	14	25	330	6	16
	406 x 356 x 152					375 x 327	425 x 305	445 x 379	140		0.56	1.00	13.00	0.25	0.62	
A1614CHS	16.00 x 14.00 x 6.00	14	50, 50E	A16P14	A16P14G	14.75 x 12.88	16.75 x 12.00	17.50 x 14.94	5.53	5.62	143	14	25	330	6	16
	406 x 356 x 152					375 x 327	425 x 305	445 x 379	140		0.56	1.00	13.00	0.25	0.62	
A12108CH	12.00 x 10.00 x 8.00	14	50, 50E	A12P10	A12P10G	10.75 x 8.88	12.75 x 8.00	13.50 x 10.94	7.53	7.62	194	14	25	229	6	16
	305 x 254 x 203					273 x 226	324 x 203	343 x 278	191		0.56	1.00	9.00	0.25	0.62	
A14128CH	14.00 x 12.00 x 8.00	14	50, 50E	A14P12	A14P12G	12.75 x 10.88	14.75 x 10.00	15.50 x 12.94	7.53	7.62	194	14	25	279	6	16
	356 x 305 x 203					324 x 276	375 x 254	394 x 329	191		0.56	1.00	11.00	0.25	0.62	
A16148CH	16.00 x 14.00 x 8.00	14	50, 50E	A16P14	A16P14G	14.75 x 12.88	16.75 x 12.00	17.50 x 14.94	7.53	7.62	194	14	25	330	6	16
	406 x 356 x 203					375 x 327	425 x 305	445 x 379	191		0.56	1.00	13.00	0.25	0.62	
A161410CH	16.00 x 14.00 x 10.00	14	50, 50E	A16P14	A16P14G	14.75 x 12.88	16.75 x 12.00	17.50 x 14.94	9.53	9.62	244	14	25	330	6	16
	406 x 356 x 254					375 x 327	425 x 305	445 x 379	242		0.56	1.00	13.00	0.25	0.62	

Catalog numbers ending in "S" are hinged on short side.

Purchase panels separately. Optional stainless steel, conductive, composite and aluminum panels are available for most sizes.



## X-ON Electronics

Largest Supplier of Electrical and Electronic Components

*Click to view similar products for* [Enclosures, Boxes, & Cases](#) *category:*

*Click to view products by* [Pentair](#) *manufacturer:*

Other Similar products are found below :

[CR-425 PAINTED](#) [585-R-WH-PK](#) [M-10-PLATED](#) [60221-01](#) [60566-01-000](#) [HPL-9VB BATT DOOR](#) [M-16-LID-PLATED](#) [M18-PLTD](#) [M-21-LID-PLATED](#) [M-21-PLATED](#) [M-23-PLATED](#) [CU-281-MB](#) [6711GSKT](#) [71884-29-028](#) [LH45-100 Black](#) [7200B](#) [72868-510-000](#) [CNS-0000 Black](#) [72883-510-000](#) [CNS-0101 Black](#) [72906-510-000](#) [CNS-0407 Black](#) [73091-510-000](#) [CNM-0000-BLACK Kit](#) [73092-510-000](#) [CNM-0101 Black](#) [73108-510-000](#) [CNL-0303 Black](#) [73395-510-039](#) [CNS-0006 Bone](#) [74257-510-000](#) [CNL-0004](#) [MDC-1183-PLAIN-ALUM](#) [MDC-1183-PTD](#) [MDC-13104-PLAIN-ALUM](#) [MDC-211 - PAINTED IVORY/BEIGE](#) [MDC-321-PTD](#) [MDC-432-PLAIN-ALUM](#) [MDC-973-PTD](#) [76](#) [77153-01-028](#) [FLX6030](#) [83535-01-508](#) [PS-11296-G](#) [PS-11298-B](#) [116-508](#) [120-407](#) [120-412](#) [120-909](#) [120-455](#) [R272-100-000](#) [120-910](#) [R501-001-010](#) [R508-080-000](#) [R508-160-000](#) [R530-120-000](#) [R530-122-000](#) [R530-200-000](#) [R531-160-000](#) [R531-200-000](#) [R582-080-100](#)