

LOC	DIST	REVISIONS			
H	-	LTR	DESCRIPTION	DATE	APVD
		F1	REVISED PER ECO-11-005294	27APR11	HMR

**1 CONSTRUCTION**

**1.1 Conductor:**

- 1.1.1 Construction: Stranded 7x0.127 mm copper tin plated
- 1.1.2 Cross-section: 28AWG (0.089 mm<sup>2</sup>)
- 1.1.3 Diam.: 0.39 mm

**1.2 Insulation:**

- 1.2.1 Material: PVC 105°C
- 1.2.2 Insulation thickness: nom. 0.25 mm
- 1.2.3 Diam.: 0.93 mm
- 1.2.4 Pitch: 1.27 (see Table 1)
- 1.2.5 Colour: Gray RAL7032  
Conductor #1 Red
- 1.2.6 Shore hardness: 94

**2. Electrical requirements:**

- 2.1 DC Resistance: 216 Ohm/km at 20°C
- 2.2 Insulation Resistance: 100 MOhm x km at 20°C
- 2.3 Max Operating Voltage: 300V at 50Hz
- 2.4 Test voltage: min. 2000V 50Hz at 1Min
- 2.5 Capacitance: max. 60pF/m

**3 Mechanical Requirements**

**3.1 Temperature Range**

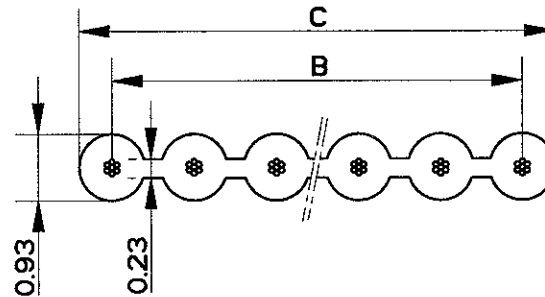
fixed	-30°C	+105°C	
fixed	-40°C	+105°C	according DIN72551
moving	-20°C	+105°C	

**4 Certification: UL2651**

CSA  
VDE 0811

**5 Dimensions (see Table 1)**

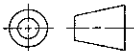
**6 Remarks: Length per Reel has to be splice free**



THIS DRAWING IS UNPUBLISHED. RELEASED FOR PUBLICATION , 19 .

ALL RIGHTS RESERVED. BY COPYRIGHT

DIMENSIONS: mm  TOLERANCES UNLESS OTHERWISE SPECIFIED: 0 PLC ± . 1 PLC ± . 2 PLC ± . 3 PLC ± . 4 PLC ± . ANGLES ± .	DWN	F.VRIELINK	MATERIAL	FINISH	
	CHK	B.MAAS	TE Connectivity		
	APVD	J.V.GRUNSVEN			
	PRODUCT SPEC	-	NAME	FLAT RIBBON CABLE 28AWG PITCH 1.27 mm	
APPLICATION SPEC	-	SIZE	CAGE CODE	DRAWING NO	
WEIGHT	-	A4	00779	C-167019	
CUSTOMER DRAWING			SCALE	SHEET	1 OF 2 REV F1



LOC	DIST	REVISIONS		
H	.	LTR	DESCRIPTION	DATE
			SEE SHEET 1	

**TABLE 1**

Length per Reel (m)	C (mm)	B (mm)	Number of Conductors	Partnumber
100	80.94	80.01	64	6-167019-4
100	75.86	74.93	60	6-167019-0
100	63.16	62.23	50	5-167019-0
100	50.46	49.53	40	4-167019-0
100	46.65	45.72	37	3-167019-7
100	42.84	41.91	34	3-167019-4
100	32.68	31.75	26	2-167019-6
100	31.41	30.48	25	2-167019-5
100	30.14	29.21	24	2-167019-4
450	25.06	24.13	20	2-167019-0
500	22.52	21.59	18	1-167019-8
600	19.98	19.05	16	1-167019-6
625	18.71	17.78	15	1-167019-5
650	17.44	16.51	14	1-167019-4
700	14.90	13.97	12	1-167019-2
900	12.36	11.43	10	1-167019-0
950	11.09	10.16	9	0-167019-9
1000	9.82	8.89	8	0-167019-8
1300	7.28	6.35	6	0-167019-6
1800	4.74	3.81	4	0-167019-4


THIS DRAWING IS UNPUBLISHED.

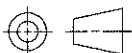
RELEASED FOR PUBLICATION

ALL RIGHTS RESERVED.

BY

© COPYRIGHT

DIMENSIONS: mm	DWN	F.VRIELINK	MATERIAL	△ 1	FINISH	△ 1
	CHK	BMAAS <i>BM</i>	 <b>TE Connectivity</b>			
TOLERANCES UNLESS OTHERWISE SPECIFIED:		APVD				
0 PLC ± -	PRODUCT SPEC	NAME				FLAT RIBBON CABLE 28AWG PITCH 1.27 mm
1 PLC ± -	APPLICATION SPEC	SIZE	CAGE CODE	DRAWING NO		
2 PLC ± -	WEIGHT	A4	00779	C-167019		
3 PLC ± -	CUSTOMER DRAWING	SCALE		SHEET	2 OF 2 REV F1	
4 PLC ± -						
ANGLES ± -						



## X-ON Electronics

Largest Supplier of Electrical and Electronic Components

*Click to view similar products for [Flat Cables](#) category:*

*Click to view products by [TE Connectivity](#) manufacturer:*

Other Similar products are found below :

[8132/08100](#) [FST-23A-15](#) [1301210030](#) [C336514-500](#) [902220736002000](#) [902220736006000](#) [28100-0614](#) [281000616](#) [281000625](#) [9L28014-008-H300](#) [28100-0571](#) [28100-0602](#) [281000624](#) [28100-0650](#) [28100-0664](#) [336512-300](#) [336518](#) [336537-CUT-LENGTH](#) [3447/10-100](#) [3625/08-30M](#) [362514100MSF](#) [40WDY00005](#) [5111993623](#) [336506-300](#) [336508-300](#) [C374910](#) [34WDY00006](#) [3749/10-100](#) [375630](#) [3-971111-6](#) [1-1437356-3](#) [57034-6](#) [812504](#) [8132/11100](#) [5-1437214-8](#) [1301210060](#) [1301210058](#) [1301190003](#) [1301210032](#) [5111196336](#) [607.5689.087](#) [607.5689.091](#) [3801/04](#) [1301210020](#) [3754/12](#) [902220736003000](#) [3625/22100MSF](#) [902220736005000](#) [902220736004000](#) [C3811/10-100](#)