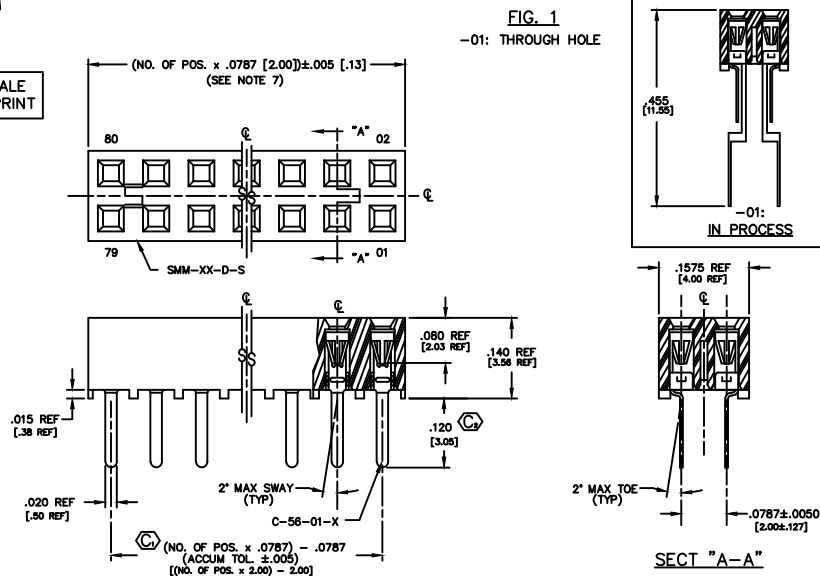


REVISION AW

DO NOT SCALE FROM THIS PRINT



NOTES:

- RETENTION FORCE IN BODY TO BE: 1 lbs. MIN
- INSERTION FORCE TO BE: 3.0 oz. MAX.
- WITHDRAWAL FORCE TO BE: 0.5 oz. MIN.
- Ø REPRESENTS CRITICAL DIMS. FOR STATISTICAL PROCESS CONTROL.
- [] DIMS ARE IN METRIC AND ARE NOT CONTROLLING DIMS.
- "-LC" OPTION FOR A 02 POSITION WILL HAVE ONLY ONE LOCKING CLIP (LC-05-TM).
- "END WALLS" AFTER CUTTING SHOULD BE .017±.005.
- FOR -01 LEAD STYLE, LAYER PACKAGE POSITIONS -01 THRU -04.
- FOR -02 LEAD STYLE WITHOUT PICK & PLACE PAD, LAYER PACKAGE POSITION -02 ONLY.
- 02 THRU -05 POSITION WITH -K OR -P TO BE PACKAGED IN -TR ONLY. -06 THRU -40 POSITION AVAILABLE IN TUBE OR -TR PACKAGING.
- .010" MAX CUT FLASH.
- NO FLASH ALLOWED IN SOCKET OR EXTENDING BELOW LEADS.
- DUE TO THE HIGH AMOUNT OF INSERTION FORCE NEEDED, THE -LC OPTION IS NOT COMPATIBLE WITH AUTO PLACEMENT. SAMTEC RECOMMENDS MANUAL PLACEMENT FOR ALL ASSEMBLIES WITH THE -LC OPTION.
- INSULATOR MATERIAL: BLACK, LCP, UL 94 V0

DIMENSIONS ARE IN INCHES UNLESS OTHERWISE NOTED		TOLERANCES ARE:	
ONE PLACE DECIMALS: ± .1	THREE PLACE DECIMALS: ± .005	ANGLES	± 1°
TWO PLACE DECIMALS: ± .01	FOUR PLACE DECIMALS: ± .0020		

TITLE: 2 mm SOCKET STRIP
 SMM-1XX-XX-XX-D-XX-XX-X-XX
 SHEET 1 OF 2

SMM-1XX-XX-XX-D-XX-XX-X-XX

NO. OF POS. PER ROW

THROUGH HOLE: -01 THRU -40

SURFACE MOUNT: -02 THRU -40

LEAD STYLE

-01: THROUGH HOLE (C-56-01-X)

-02: SURFACE MOUNT (C-56-02-X)

PLATING OPTION

-S: SELECTIVE, 30 Au / 50 NI MIN ON CONTACT, MATTE TIN TAIL

-F: FLASH SELECTIVE, 3 Au / 50 NI MIN ON CONTACT, MATTE TIN TAIL

-H: HEAVY GOLD, 50 Au / 50 NI MIN ON CONTACT, 3 Au / 50 NI MIN ON TAIL

-SM: SELECTIVE, 30 Au / 50 NI MIN ON CONTACT, MATTE TIN TAIL

-FM: FLASH SELECTIVE, 3 Au / 50 NI MIN ON CONTACT, MATTE TIN TAIL

-L: LIGHT SELECTIVE, 10 Au / 50 NI MIN ON CONTACT, MATTE TIN TAIL

ROW OPTION

-D: DOUBLE ROW (USE SMM-XX-D-S)

OPTION 1
 -LC: LOCKING CLIP (USE 2 LC-05-TM) (AVAILABLE ONLY WITH LEAD STYLE -02. SEE ± DIMS, SEE NOTE 6 & 13, SEE FIG 2)

OPTION 2
 -P: PICK AND PLACE PAD (USE PPP-03) (SEE FIG 3)
 -K: POLYAMIDE FILM PAD (USE K-001-217-313-005) (.005 [0.13] THICKNESS, SEE FIG 4) (AVAILABLE ON LEAD STYLE -02 ONLY)

POLARIZING OPTION
 INDICATE POSITION (USE PK-07-R)

OPTION
 TAPE & REEL
 MAX. POSITIONS AVAILABLE:
 27 VERTICAL / 38 HORIZONTAL (SEE SHEET 2)

$R = \text{No. OF POS.} \times .0787 [2.00]$
 $S = \{(R - .394) / 2\} \pm .020$

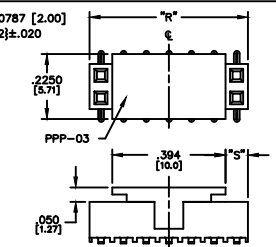
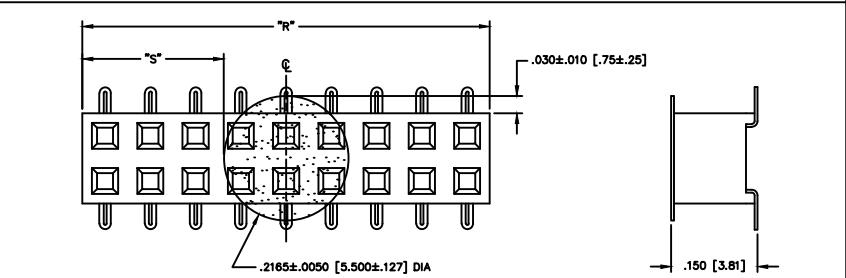
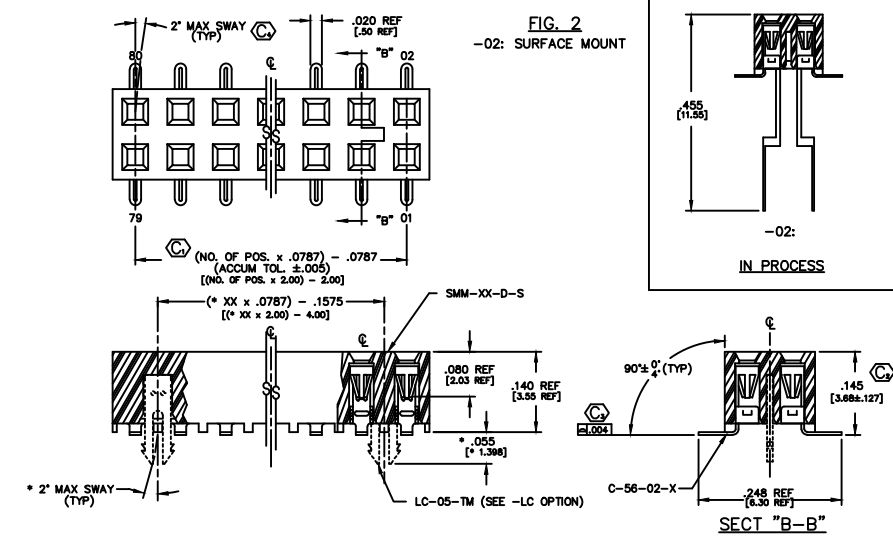


FIG. 3
-P: PICK AND PLACE PAD (PLACE PPP-03 ABOUT C.L. AS SHOWN) (SEE NOTE 10)



NOTE: "R" = USED MEASURED DIMENSION (REF)
 "S" = $\{(R - .2165 [5.50]) / 2\} \pm .020 [.51]$

FIG. 4
-K: POLYAMIDE FILM PAD [2 POSITION MINIMUM, SEE NOTE 10]

PROPRIETARY NOTE
 THE INFORMATION CONTAINED HEREIN IS THE PROPERTY OF SAMTEC CORPORATION. IT IS TO BE USED ONLY FOR THE PURPOSES AND IN THE MANNER SPECIFICALLY AUTHORIZED BY SAMTEC CORPORATION. ANY UNAUTHORIZED REPRODUCTION OR DISSEMINATION OF THIS INFORMATION IS STRICTLY PROHIBITED.

820 PARK EAST BLVD. NEW ALBANY, INDIANA 47150
 PHONE (812) 944-8733 P.O. BOX 1147
 CODE 65322
 MADE BY: KOLB 5-21-91
 DEM

X-ON Electronics

Largest Supplier of Electrical and Electronic Components

Click to view similar products for [samtec](#) manufacturer:

Other Similar products are found below :

[ESQT-135-03-F-D-380](#) [FTSH-111-01-L-DV](#) [QTE-060-01-L-D-A](#) [MSAS-179-ZUGG-18](#) [MTSW-103-07-F-S-240](#) [MTSW-125-24-H-D-285](#)
[ERF8-020-05.0-S-DV-K-TR](#) [IDMD-10-T-12.00-A-G-R](#) [IPL1-112-01-L-D-K](#) [SFM-107-02-S-D-LC](#) [SFML-115-01-S-D](#) [SFML-125-01-S-D](#)
[LSHM-120-02.5-L-DV-A-N-K-TR](#) [ESQ-110-14-G-D](#) [ESQT-125-03-F-D-310](#) [SO-0515-01-01-02](#) [SQW-120-01-F-D-VS-A](#) [FJH-50-D-12.00-4](#)
[CES-150-01-T-D](#) [QFS-052-01-SL-D-RA](#) [QTE-040-04-L-D-A](#) [QTH-020-04-F-D-DP-A-K-TR](#) [QTH-060-01-F-D-A](#) [QTH-090-04-L-D-A](#)
[TCSD-10-S-05.00-01-F-N](#) [TFM-110-02-S-D](#) [TFM-115-02-L-DH](#) [TFM-120-12-S-D-LC](#) [TFML-140-02-S-D](#) [TLW-107-05-G-D](#) [BDL-136-T-E](#)
[TSS-132-01-G-S](#) [TST-113-04-S-D-RA](#) [TSW-105-14-F-D](#) [BSE-040-01-F-D-A](#) [HPF-03-02-T-S](#) [IPD1-04-D-K](#) [TW-03-06-H-D-400-SM-A](#)
[RPCU-G-00.50-BMS-AM](#) [ERF8-020-01-L-D-RA-L-TR](#) [ERF8-025-05.0-L-DV-TR](#) [ERF8-040-05.0-L-DV-TR](#) [SL-120-T-10](#) [SLM-115-01-S-D](#)
[CLP-132-02-G-D](#) [TFC-125-02-F-D-A-K](#) [ISDF-25-D-M](#) [IPT1-105-01-S-D-RA](#) [IPL1-125-01-S-D-RA](#) [ICO-308-CGT](#)