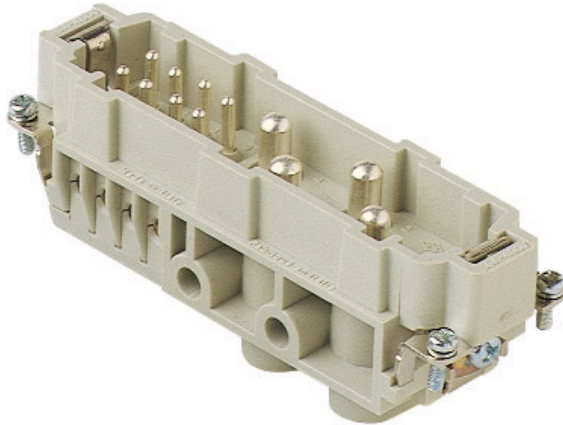


## Product Sheet

**Part Number:** CXM 4/8



<b>Family</b>	inserts
<b>Version</b>	screw terminal connections
<b>Series</b>	CX
<b>Product type</b>	with male contacts
<b>Model</b>	male insert
<b>Reference standard</b>	EN 61984 (2001-11)
<b>Contact type</b>	silver plated
<b>No. of poles</b>	4 poles +
<b>Auxiliaries poles</b>	8 poles (16A max - 230/400V/4kV/3)
<b>Voltage (V)</b>	400V
<b>Current (A)</b>	80A (A.C./D.C.)
<b>Wire section</b>	4mm <sup>2</sup> - 16mm <sup>2</sup>
<b>Awg size</b>	12 - 6
<b>IP degree of protection</b>	IP20 degree of protection without enclosure; IP65, IP66, IP67, IP68 (EN 60529) and IP69K (DIN 40050 - 9) with enclosure

The information and the dimensions contained are not binding and may be changed without prior notice.  
The drawing's dimensions are in mm.

**Fixing centre distance** size "104.27"

**Impulse withstand voltage** 6kV

**Pollution degree** 3

**Barcode EAN13** 8015747042635

**Notes**

CX 4/8 inserts:

- characteristics according to EN 61984:  
(80A 400V 6kV 3)  
(80A 400/690V 6kV 2)  
8 Auxiliary contacts: (16A 230/400V 4kV 3)  
8 Auxiliary contacts: (16A 400V 4kV 2)
- for maximum current load, see the insert load curve section
- inserts for applications with temperatures up to 180 °C, available on request

The information and the dimensions contained are not binding and may be changed without prior notice.  
The drawing's dimensions are in mm.

## X-ON Electronics

Largest Supplier of Electrical and Electronic Components

*Click to view similar products for [Standard Circular Connector](#) category:*

*Click to view products by [ILME](#) manufacturer:*

Other Similar products are found below :

[C015](#) [10F006](#) [001](#) [1](#) [5M2530B10P](#) [600247N007](#) [600259N006](#) [600273N007](#) [600432N009](#) [6280-2PG-519](#) [6280-3PG-311](#) [6280-3SG-311](#)  
[6280-7SG-3DC](#) [6280-7SG-522](#) [6282-5PG-311](#) [6282-6PG-519](#) [6282-8SG-311](#) [6283-11](#) [6283-15](#) [6290](#) [6293](#) [6382-2PG-311](#) [6382-2PG-3DC](#)  
[6382-2SG-321](#) [6382-2SG-3DC](#) [6382-4SG-516](#) [67-03E20-37P](#) [681-PMG](#) [CXC3106A1811S](#) [CXS3102A14S2P](#) [CXS3102A181S](#)  
[CXS3106A14S6S](#) [D38999/20FC8SA L/C](#) [MB12P-1](#) [MB12R-6](#) [7251-2PG-300](#) [7251-2SG-300](#) [7251-4PG-300](#) [7251-4SG-300](#) [7251-5PG-300](#)  
[7251-5SG-300](#) [7251-6SG-300](#) [7251-7PG-300](#) [7251-8PG-300](#) [7271-6SG-300](#) [7282-3PG-300-CH3](#) [73000005663](#) [75-190011-03P](#) [75-190216-08S](#) [75-190218-10P](#) [75-214636-52P](#) [75-474118-10P](#) [75-474211-03P](#)