

MICRO USB CONNECTOR

ESB 22 SERIES (CONNECTOR AND CABLE)

FEATURES

- 0.65mm contact spacing.
- USB 2.0 Specification Compliance Data Rates Beyond USB 2.0 (480Mb/s -->).
- On-The-Go Device shall conform to the OTG requirements as set forth in the On-The-Go Supplement to the USB 2.0 Specification.
- The Micro-USB specification defines the following additional connectors: Micro-B plug and receptacle, Micro-AB receptacle, Micro-A plug.
- The Micro-AB receptacle is only allowed on OTG products. All other uses of the Micro-AB receptacle are prohibited. The Micro-AB receptacle accepts either a Micro-A plug or a Micro-B plug.
- Receptacle and plug housings are UL 94V-0 grade fire retardant.
- Applications: Mobile Phones, Portable devices, MP3 players, Portable digital video players, Digital still cameras, Digital video cameras.

SPECIFICATIONS

1.ELECTRICAL

- Voltage rating: 20mVAC
- Current rating: 1.8A
- Contact resistance: 30m Ω Max.
- Insulation resistance: 100M Ω Min.
- Dielectric strength: 100VAC Min.

2.MECHANICAL

- Durability: 10000 cycles
- Mating force: 35N Max.
- Unmating force: 8N Min.

MATERIALS

1.MATERIAL

- Contacts: Copper Alloy
- Shell: Stainless Steel
- Housing: Thermoplastic high-Temp
- Latch: Stainless Steel

2.PLATING

- Nickel In All Area
- Contact: Au over Nickel
- Shell: Nickel In All Area

PACKING

1.Packing method

- All cable are packed into ploy bags and then packed into boxes.
- All connector are packed using tape & reel or Tube parked methods.

2.Information on label (stuck to each ploy bag, reel and box)

- (1)Part NO. (2)Description (3)Lot NO. (4)Quantity
(5)Tester NO. (6)Reprocess NO. (7)QC stamp (8)Date
(9)ECE mark (10)Manufacturers name

PART NUMBERING SYSTEM

```

ESB 22 7 1 1 0 1 0 0 Z
|
| +--- Z:RoHS Compliant
| +--- Special Code:
|         0:Tape & reel type
|         1:Tube packed type
|         2:Packed into ploy bags
| +--- Modify Code:
|         0:Standard type
| +--- Mark Code:
|         0:Standard
|         1:No ECE Mark
| +--- Terminal Type:
|         0:SMT Type
|         2:Solder Wire Type
|         3:Through Hole Type
| +--- Terminal Pole No.:
|         1:5 Pole[USB 2.0]
| +--- Port Type:
|         1:Single Port
| +--- Setting:
|         Socket: 7:AB Type
|                 8:B Type
|         Plug: A:A Type
|                B:B Type
| +--- Contact Type: 22:Micro USB Connectors
+--- Model Name: ESB Series

```

DIMENSIONS (UNIT:mm)

**ESB22A (A Plug)
+ ESB227 (AB Socket)**

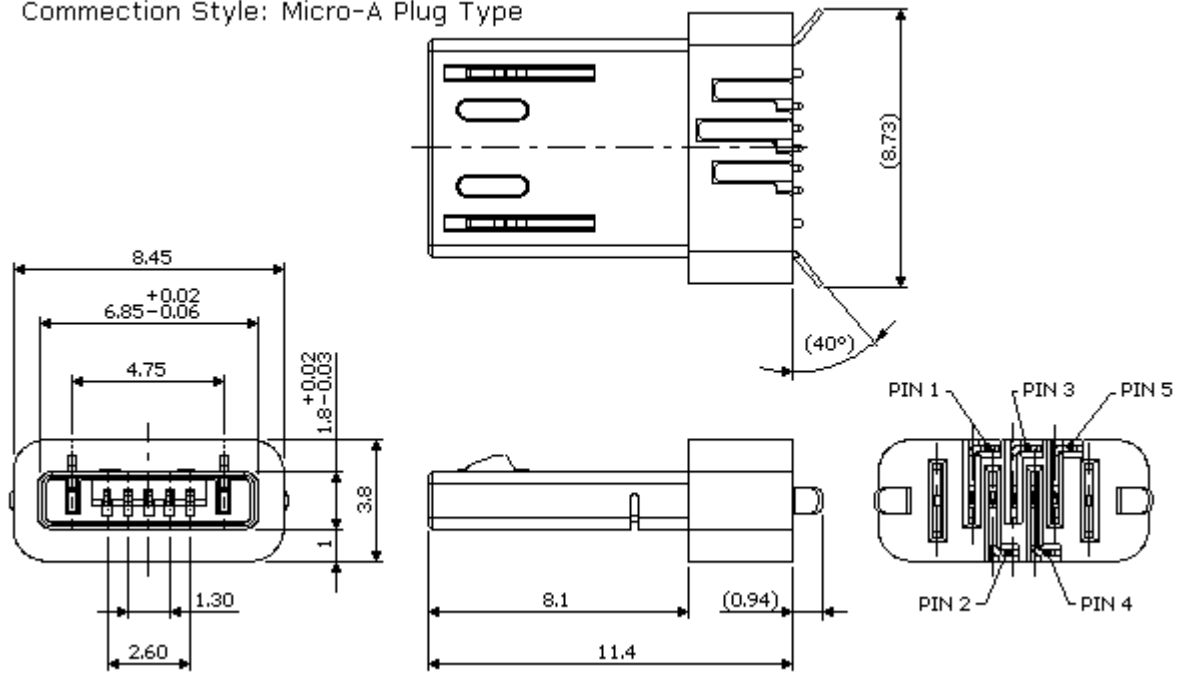


**ESB22B (B Plug)
+ ESB228 (B Socket)**



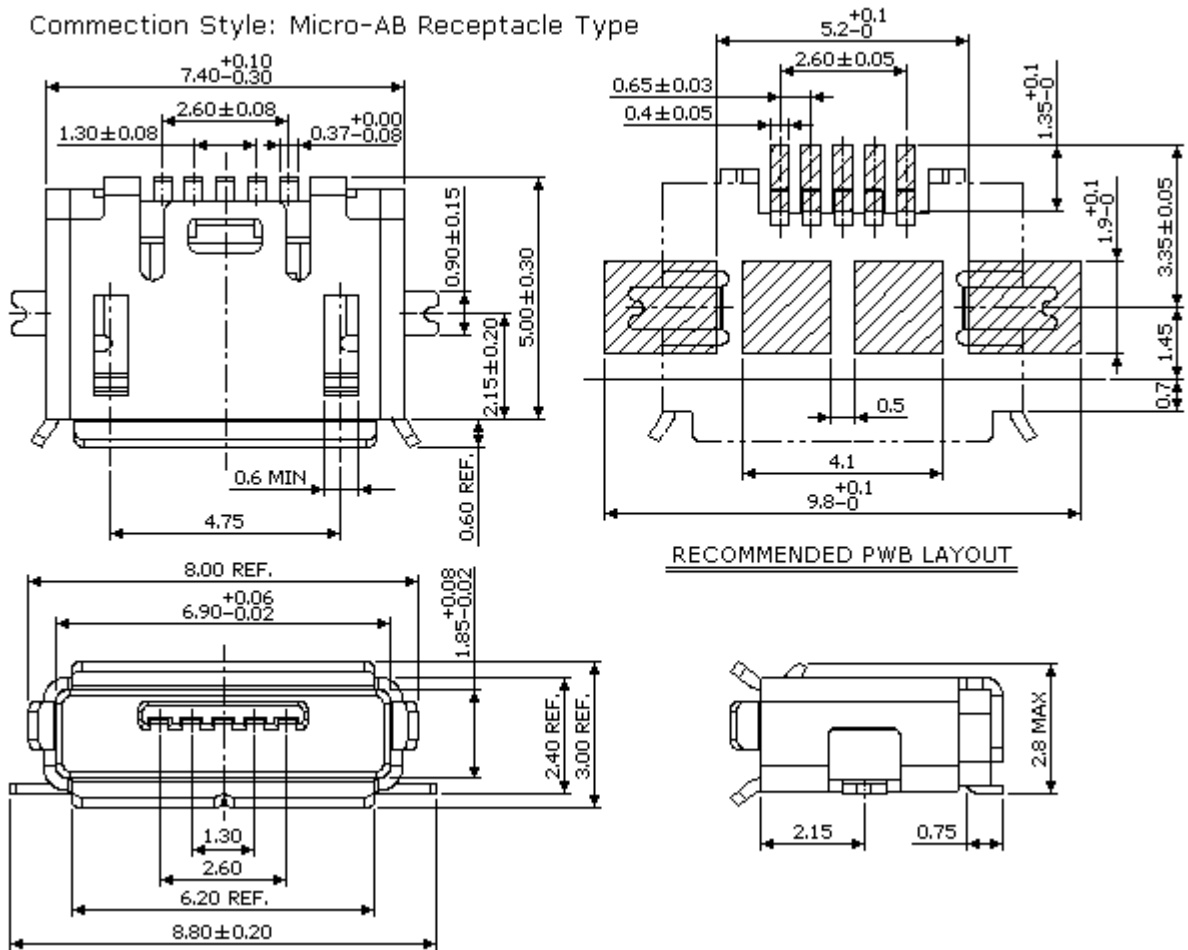
ESB 22A UNIT:mm

Connection Style: Micro-A Plug Type



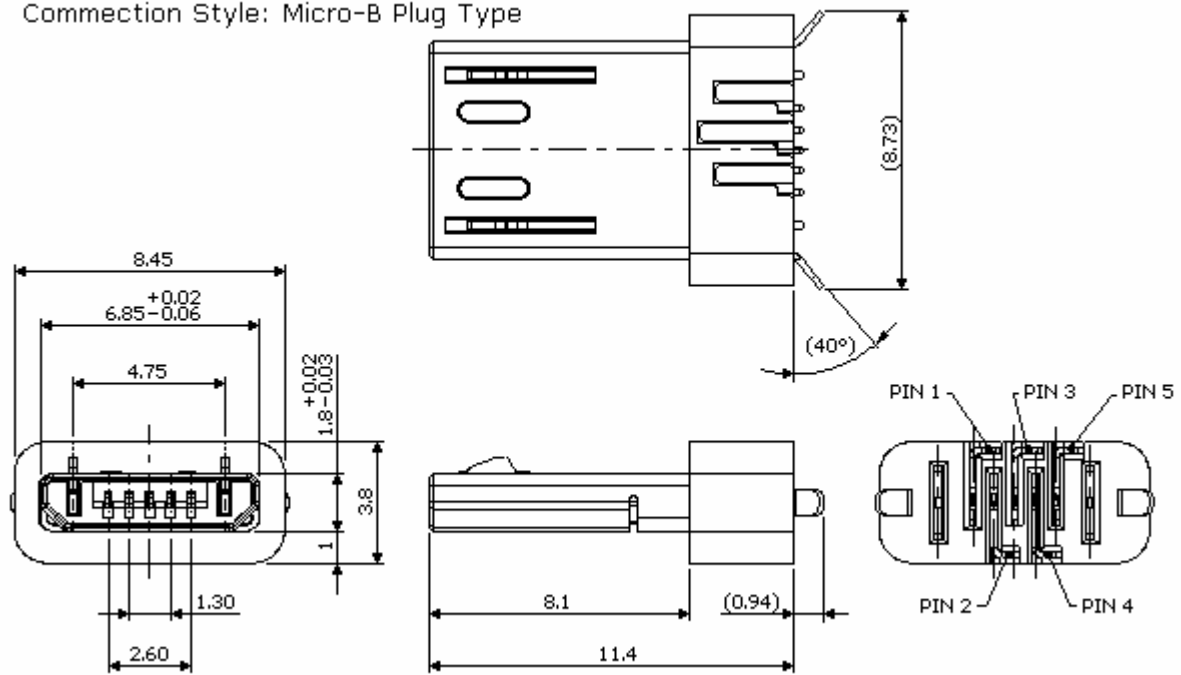
ESB 227 UNIT:mm

Connection Style: Micro-AB Receptacle Type



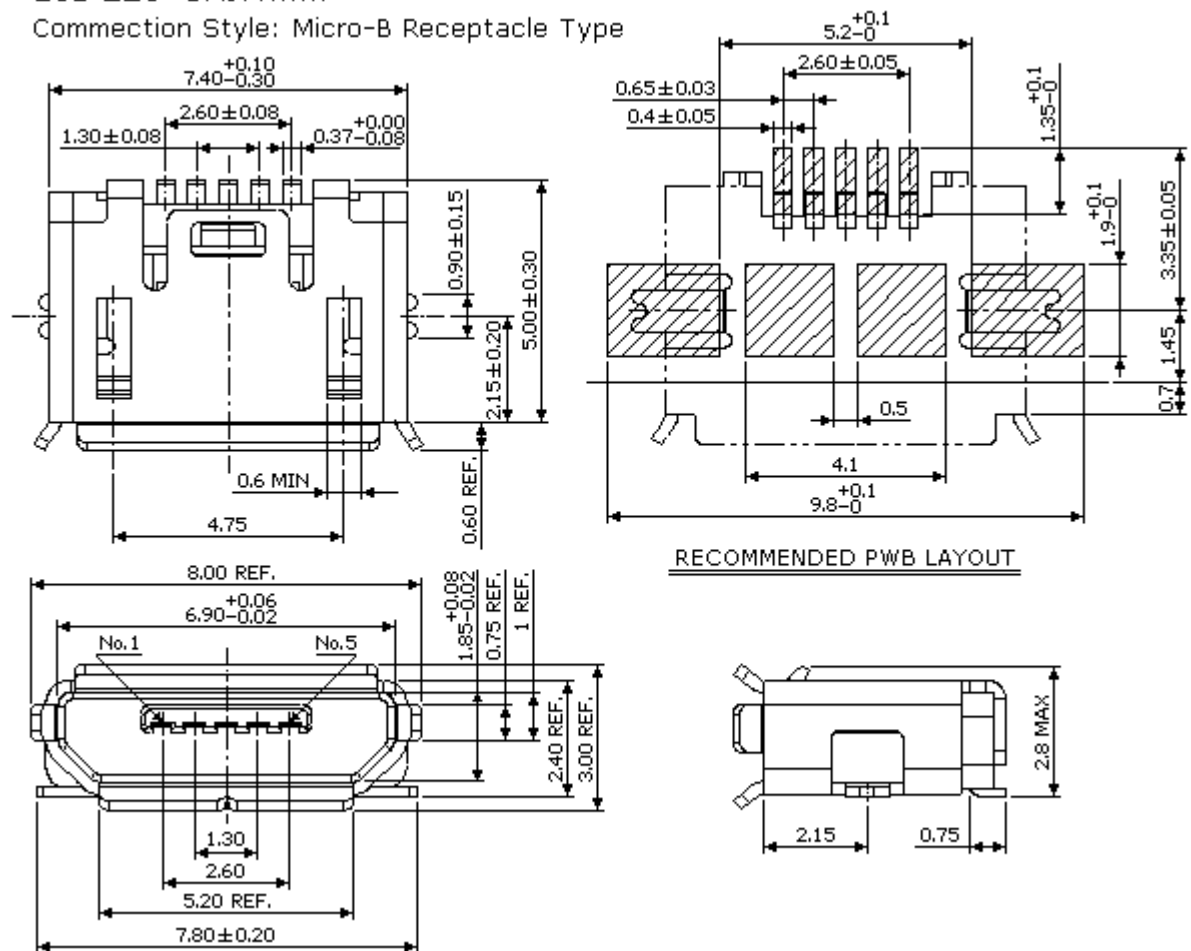
ESB 2B UNIT:mm

Connection Style: Micro-B Plug Type



ESB 228 UNIT:mm

Connection Style: Micro-B Receptacle Type



X-ON Electronics

Largest Supplier of Electrical and Electronic Components

Click to view similar products for [USB Cables / IEEE 1394 Cables category](#):

Click to view products by [ECC manufacturer](#):

Other Similar products are found below :

[68768-0173](#) [FNY-W6003-01](#) [88764-0800](#) [13805532](#) [148700-1](#) [17-200621](#) [17-250051P](#) [954](#) [AC102012-2](#) [IP-USB1\(C10\)S-RW](#)
[CABLE/RTP/USB/DT](#) [0847290003](#) [10115240-12200LF](#) [RS232-GTD](#) [USBFTVX2SA2N03A](#) [USBFTV2SA2N03A](#) [1689404-1](#) [FTP-](#)
[629Y401](#) [FTP-628Y402](#) [943301-001](#) [FNY-W6022](#) [FNY-W6003-03](#) [1310-1015-05](#) [1310-1019-04](#) [0887283402](#) [UA-30AMFM-SL7B02](#) [UA-](#)
[30AMFM-SL7B01](#) [UA-30AFM-LD7B03](#) [UA-30AMFM-SL7B03](#) [USBAPSCC7202A](#) [UES-1001A160](#) [UES-1003A160](#)
[USBFTVX7SA2N20A](#) [USBFTVX2SA2N20A](#) [USBFTV2PEMSA2N10A](#) [FTP-629Y602](#) [USBCAMCM100](#) [USB A/F*2 to 2.54 2*5P-SH](#)
[L=400mm](#) [EP-CBUSB10P2FLT](#) [1310-1033-01](#) [1310-1037-04](#) [ASR-USB](#) [68784-0075](#) [17-241361](#) [17-230471](#) [217B-BC02](#) [USB-29](#) [19800-](#)
[010500-200-RS](#) [USB+MINI DIN 6P WITH BKT](#) [088738-8100](#)