

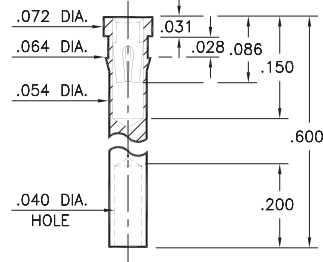
# PIN RECEPTACLES

FOR .015" - .025" DIAMETER PINS

## 1707

1707-0-19-XX-30-XX-10-0

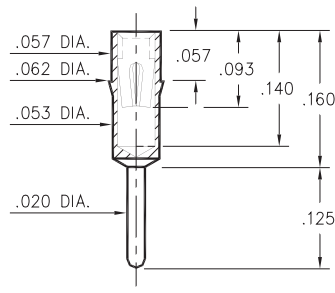
Press-fit in .061 mounting hole  
Wire Crimp Termination. Accepts wire sizes 22 AWG Max. / 24 AWG Min.



## 0240

0240-0-15-XX-30-XX-04-0

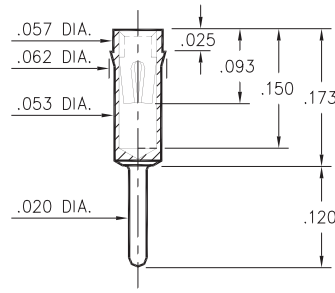
Press-fit in .059 mounting hole



## 0307

0307-0-15-XX-30-XX-04-0

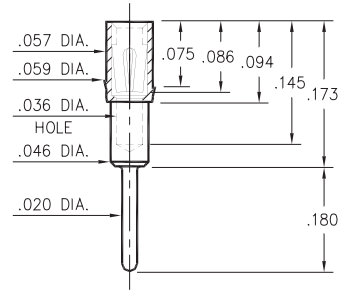
Press-fit in .059 mounting hole



## 1753

1753-0-15-XX-30-XX-04-0

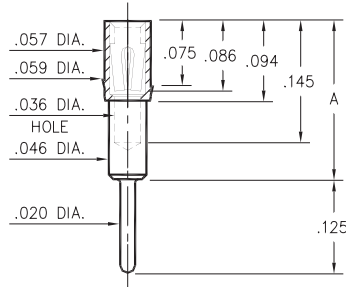
Press-fit in .057 mounting hole



## 1705/1706/1762

17XX-0-15-XX-3X-XX-04-0

Press-fit in .057 mounting hole

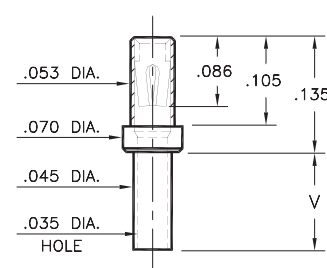


Basic Part Number	Height A
1705-0	.165
1706-0	.218
1762-0	.300

## 0672

0672-X-15-XX-30-XX-10-0

Swage mount in .049 hole

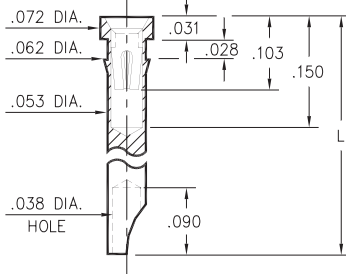


Basic Part Number	Board Thickness	Length V
0672-1	.031	.052
0672-2	.062	.084
0672-3	.094	.115
0672-4	.125	.146

## 1024/1104

1XX4-0-18-XX-30-XX-10-0

Press-fit in .059 mounting hole  
Accepts wire sizes up to .028" dia.

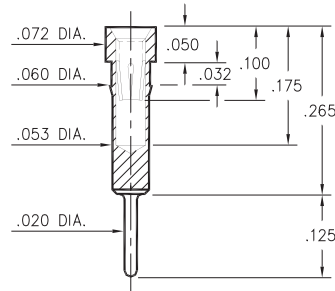


Basic Part Number	Length L
1024-0	.290
1104-0	.450

## 0498

0498-0-15-XX-35-XX-04-0

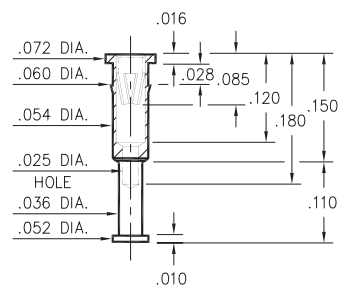
Press-fit in .057 mounting hole



## 8131

8131-0-15-XX-30-XX-10-0

Press-fit in .057 mounting hole



### SPECIFICATIONS:

Shell Material: Brass Alloy 360, 1/2 Hard

Contact Material: Beryllium Copper Alloy 172, HT

Dimensions: Inches

Tolerances On: Lengths: ±.005

Diameters: ±.002

Angles: ± 2°



ORDER CODE: **XXXX - X - 1X - XX - XX - XX - XX - 0**

BASIC PART #

SPECIFY SHELL FINISH:

- 01 200 μ" TIN/LEAD OVER NICKEL
- ◆ 80 200 μ" TIN OVER NICKEL (RoHS)
- ◆ 15 10 μ" GOLD OVER NICKEL (RoHS)

SPECIFY CONTACT FINISH:

- 02 100 μ" TIN/LEAD OVER NICKEL
- ◆ 84 100 μ" TIN OVER NICKEL (RoHS)
- ◆ 27 30 μ" GOLD OVER NICKEL (RoHS)

SELECT CONTACT:

#30 or #35 CONTACT (DATA ON PAGE 253 & 254)

(For alternate contact choices, see groups B and C on page 248)



## X-ON Electronics

Largest Supplier of Electrical and Electronic Components

*Click to view similar products for [Circuit Board Hardware - PCB category](#):*

*Click to view products by [Mill-Max manufacturer](#):*

Other Similar products are found below :

[8919-0-00-15-00-00-03-0](#) [0132-0-15-01-30-27-04-0](#) [0135-0-15-01-30-27-04-0](#) [5970-1-15-01-32-14-04-0](#) [0132-0-15-15-30-27-04-0](#) [0135-0-15-15-30-27-04-0](#) [0149-0-15-15-30-27-04-0](#) [MBI 1 BLUE](#) [7305-0-15-15-47-14-10-0](#) [MKU 1 BLACK](#) [MLN 150/1 BLACK](#) [8579-0-15-80-11-27-10-0](#) [8579-1-15-15-11-27-10-0](#) [8637-0-15-15-21-14-10-0](#) [8830-0-15-01-22-14-10-0](#) [8836-0-00-21-00-00-03-0](#) [PRUEF 2 RED](#) [9976-0-00-00-00-00-03-0](#) [1178-0-01-80-00-00-03-0](#) [PW1616](#) [1215-3-05-00-00-00-01-0](#) [1303-0-15-15-47-14-04-0](#) [1404-3](#) [1404-4](#) [1406-4](#) [1407-3](#) [1406-3](#) [1407-4](#) [1408-3](#) [1424-4](#) [1426-3](#) [1427-3](#) [1427-4](#) [1428-3](#) [1419-4](#) [1424-3](#) [1426-4](#) [1428-4](#) [MPS 1 BLACK](#) [1520150-1](#) [1548-103](#) [1801-0-15-15-30-27-04-0](#) [1938-0-00-00-00-00-03-0](#) [1942-0-00-00-00-00-03-0](#) [2101-3-00-44-00-00-07-0](#) [2104-2-01-44-00-00-07-0](#) [2108-2-00-50-00-00-07-0](#) [2108-3-00-44-00-00-07-0](#) [2109-2-00-44-00-00-07-0](#) [2110-2-00-44-00-00-07-0](#)