



Industrial Ethernet Receptacle Connectors for PROFINET or Ethernet/IP Applications

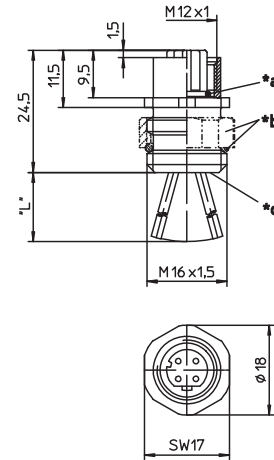
0986 EFC 151 A



Male, 4-Pole, D-Coding

Receptacle connector, M12 female connector for front mounting, 4 poles, D coding, adjustable, assembled stranded wire, solder contacts potted with epoxy, chassis side thread M16 x 1.5.

– especially suitable for Industrial Ethernet –

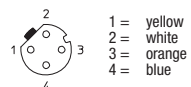


- *a O-Ring
- *b adjustable nut and o-ring enclosed separately
- *c solder contacts potted with epoxy
- "L" 0,5 m

Pin Assignments

Face Views / M12

Female: 4 poles D Coding





Industrial Ethernet Receptacle Connectors for PROFINET or Ethernet/IP Applications
0986 EFC 152

Technical Data

Environmental


Degree of protection IP 67 / NEMA 6P
Operating temperature range -25°C (-13°F) / +80°C (+176°F)

Mechanical

Housing / Molded body CuZn, nickel-plated
Insert TPU, self-extinguishing
Contact CuSn, pre-nickeled and 0.3 microns gold-plated
O-ring FKM
Adjustable nut CuZn, nickel-plated

Electrical

Contact resistance $\leq 5 \text{ m}\Omega$
Nominal current at 40°C 4 A
Nominal voltage 240 V
Test voltage 2.0 kV eff. / 60 s
Insulation resistance $> 10^9 \Omega$
Pollution degree 3

Part Number	Pins	Lead (mm ²)	Characteristics
0986 EFC 151 A	4D	AWG 22	

X-ON Electronics

Largest Supplier of Electrical and Electronic Components

Click to view similar products for [Standard Circular Connector](#) category:

Click to view products by [Lumberg](#) manufacturer:

Other Similar products are found below :

[C015](#) [10F006](#) [001](#) [1](#) [5M2530B10P](#) [600247N007](#) [600259N006](#) [600273N007](#) [600432N009](#) [6280-2PG-519](#) [6280-3PG-311](#) [6280-3SG-311](#)
[6280-7SG-3DC](#) [6280-7SG-522](#) [6282-5PG-311](#) [6282-6PG-519](#) [6282-8SG-311](#) [6283-11](#) [6283-15](#) [6290](#) [6293](#) [6382-2PG-311](#) [6382-2PG-3DC](#)
[6382-2SG-321](#) [6382-2SG-3DC](#) [6382-4SG-516](#) [67-03E20-37P](#) [681-PMG](#) [CXC3106A1811S](#) [CXS3102A14S2P](#) [CXS3102A181S](#)
[CXS3106A14S6S](#) [D38999/20FC8SA](#) [L/C](#) [MB12P-1](#) [MB12R-6](#) [7251-2PG-300](#) [7251-2SG-300](#) [7251-4PG-300](#) [7251-4SG-300](#) [7251-5PG-300](#)
[7251-5SG-300](#) [7251-6SG-300](#) [7251-7PG-300](#) [7251-8PG-300](#) [7271-6SG-300](#) [7282-3PG-300-CH3](#) [73000005663](#) [75-190011-03P](#) [75-190216-08S](#) [75-190218-10P](#) [75-214636-52P](#) [75-474118-10P](#) [75-474211-03P](#)