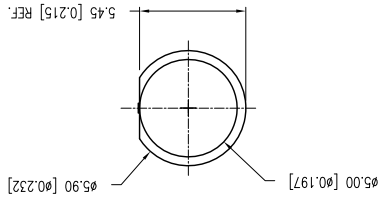
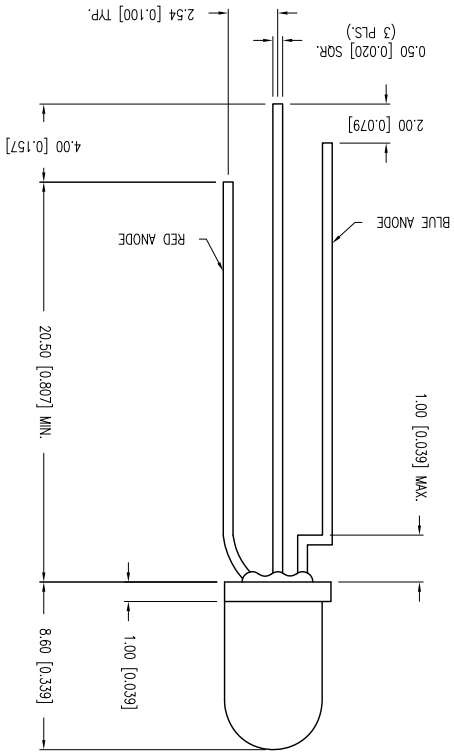


CONFIDENTIAL INFORMATION  
 THE INFORMATION CONTAINED IN THIS DOCUMENT IS THE PROPERTY OF LUMEX INC. EXCEPT AS SPECIFICALLY AUTHORIZED IN WRITING BY LUMEX INC., THE HOLDER OF THIS DOCUMENT SHALL KEEP ALL INFORMATION CONTAINED HEREIN CONFIDENTIAL AND SHALL PROTECT SAME IN WHOLE OR IN PART FROM DISCLOSURE AND DISSEMINATION TO ALL THIRD PARTIES.

DATE: 10.09.07  
 DRAWN BY: JN  
 PAGE: 1 OF 1  
 CHKD BY: SS  
 SCALE: AFRVD BY: SS

\*UNLESS OTHERWISE SPECIFIED TOLERANCES PER DECIMAL PRECISION ARE: X=±1 (±0.039), XX=±0.5 (±0.020), XXX=±0.25 (±0.010), XXXX=±0.127 (±0.005), LEAD SIZE=±0.05 (±0.002), LEAD LENGTH=±0.75 (±0.030), MIN=-0.00, MAX=+0.00, DECIMAL PRECISION, UNCONTROLLED DOCUMENT



PARAMETER	MIN	TRF	MAX	UNITS	TEST COND
ELECTRO-OPTICAL CHARACTERISTICS $I_A=25^\circ\text{C}$ $I_f=20\text{mA}$					
PEAK WAVELENGTH	636 (RED)			nm	
	470 (BLUE)			nm	
FORWARD VOLTAGE (R/B)	2.0/3.5	2.5/4.0		V <sub>f</sub>	
REVERSE VOLTAGE	5.0			V <sub>r</sub>	$I_f=100\mu\text{A}$
AXIAL INTENSITY (R/B)	100/80			mcd	$I_f=20\text{mA}$
VIEWING ANGLE	60			2x theta	
EMITTED COLOR: RED/BLEU					
EPOXY LENS FINISH: MILKY WHITE DIFFUSED					
LIMITS OF SAFE OPERATION AT 25°C					
PARAMETER	COLORS			MAX	UNITS
PEAK FORWARD CURRENT*	(R/B)	185/150		ma	
STEADY CURRENT	(R/B)	30/25		ma	
POWER DISSIPATION	(R/B)	170/120		mW	
DERATE FROM 25°C		-1.2		mW/°C	
OPERATING TEMP:		-40 TO +85		°C	
STORAGE TEMP:		-40 TO +85		°C	
SOLDERING TEMP:		+260		°C	
2.0mm FROM BODY				3 SEC. MAX	
* I<10US					

## X-ON Electronics

Largest Supplier of Electrical and Electronic Components

*Click to view similar products for [Standard LEDs - SMD category](#):*

*Click to view products by [Lumex manufacturer](#):*

Other Similar products are found below :

[LTST-C19GD2WT](#) [LTST-N683GBEW](#) [597-3006-607F](#) [597-3403-607F](#) [LTW-K140SZR40](#) [LTW-M140ZVS](#) [598-8110-100F](#) [598-8170-100F](#)  
[598-8610-202F](#) [7012X7](#) [AAAF5060QBFSEEZGS](#) [12-22SURSYGC/S530-A3/E2/TR8](#) [1383SURT/S530-A3/TR1\(R\)](#) [APT1608QGW](#)  
[EASV1803BA0](#) [HT-F104TW-5860](#) [SML310BATT86](#) [SML-512VWT86A](#) [SML-LX0606SISUGC/A](#) [SML-LXL1307SRC-TR](#) [SML-](#)  
[LXR851SIUPGUBC](#) [LT1ED53A](#) [17-21/G6C-FM1N2B/3T](#) [FAT801-S](#) [SSL-LXA227IC-TR31A](#) [AM27ZGC03](#) [APB3025SGNC](#)  
[APHK1608VGCA](#) [APT2012QGW](#) [CLMVC-FKA-CA1E1L81BB7C3C3](#) [CLYBA-FKA-CFHHL9BBB7A363](#) [CMD11504UR](#) [LTW-](#)  
[020ZDCG](#) [LTW-21TS5](#) [LTW-K140SZR30](#) [HSMY-C177](#) [HT-121UYG-4739](#) [UYGT801-S](#) [KVH1C100MF6R](#) [42-21SYGC/S530-E1/TR8](#)  
[YGFR411-H](#) [597-2311-402F](#) [5973212407NF](#) [597-3302-607F](#) [597-5202-407F](#) [598-8330-117F](#) [SAW8WA2A-L35M40-CA](#) [SML013WBDW1](#)  
[SML522BUWT86](#) [SML-LX0402IC-TR](#)