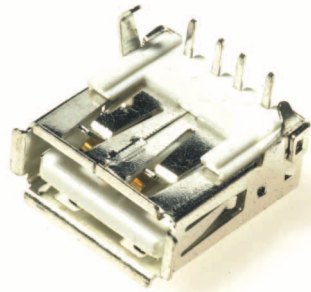
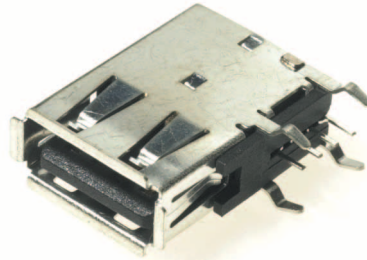


# CLIFF

## Single and Dual Stacked USB Connectors



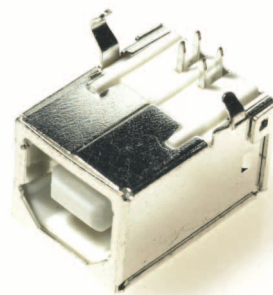
A type female single right angle USB



A type female single vertical USB



A type female dual stacked right angle USB



B type male right angle USB

The **CLIFF**<sup>®</sup> range of single and dual USB connectors are fast becoming the industry standard for plug and play connectivity between PCs and their peripherals. The DUSB and USB connectors are RAPC mounted, with kinked terminals for snap-in placement to the PC board. Both meet all Universal Serial Bus standards. Applications include Personal Computers, Audio and Data Communications, Medical Equipment and Test Equipment Instrumentation.

### Significant features include:

- Snap-in terminals facilitate wave soldering.
- Shielded for reduced EMI/RFI emissions.
- Dual stacked version increases PC board density.
- Gold plated contacts to ensure low contact resistance.
- Raised design provides easy insertion and withdrawal.

**Cliff Electronic Components, Ltd.**

76 Holmethorpe Avenue, Holmethorpe Ind. Est.  
Redhill, Surrey RH1 2PF. England

**Tel:** +44 (0) 1737 771375

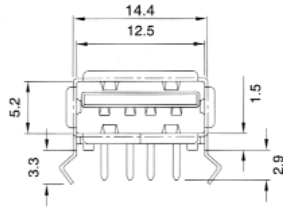
**Fax:** +44 (0) 1737 766012

**Email:** sales@cliffuk.co.uk

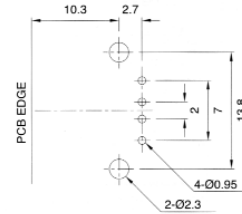
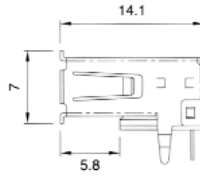


Visit us online at:

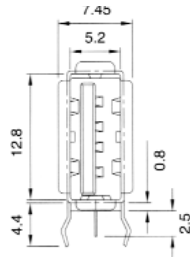
[www.cliffuk.co.uk](http://www.cliffuk.co.uk)



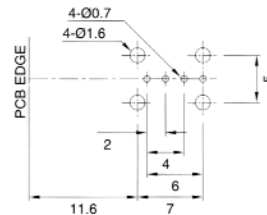
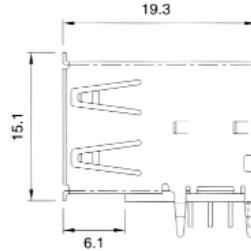
FCK001A A type female single right angle USB



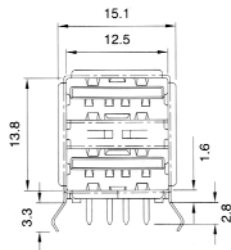
PC LAYOUT



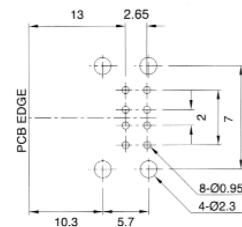
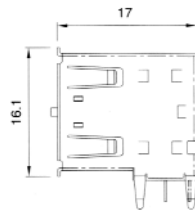
FCK001VA A type female single vertical USB



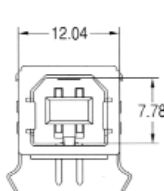
PC LAYOUT



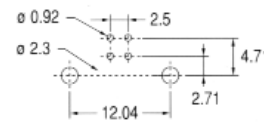
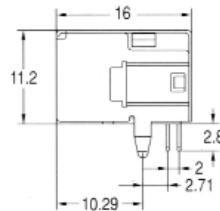
FCK002A A type female dual stacked right angle USB



PC LAYOUT



FCK001BW B type male right angle USB



PC LAYOUT

### Specification:

**Voltage Rating:** 30 VAC (rms) Max.

**Current Rating:** Signal application only, 1A Max. per contact

**Contact Resistance:** 25m ohms Max.

**Temperature Rating:** 32°F to 104°F (0°C to 40°C)

**Insertion Force:** 7.7 lbs Max. (3.5 kg Max.)

**Withdrawal Force:** 0.8 lb Min. (0.4 kg Min.)

**Life:** 1500 cycles

### Materials:

**Body:** Molded thermoplastic, UL 94V-0

**Shell:** Copper alloy, tin plated

**Contact Terminal:** Copper alloy, gold plating in mating area, tin plating on solder tails, all over nickel plating.

## X-ON Electronics

Largest Supplier of Electrical and Electronic Components

*Click to view similar products for [USB Cables / IEEE 1394 Cables category](#):*

*Click to view products by [Cliff manufacturer](#):*

Other Similar products are found below :

[68768-0173](#) [FNY-W6003-01](#) [88764-0800](#) [13805532](#) [148700-1](#) [17-200621](#) [17-250051P](#) [954](#) [AC102012-2](#) [IP-USB1\(C10\)S-RW](#)  
[CABLE/RTP/USB/DT](#) [0847290003](#) [10115240-12200LF](#) [RS232-GTD](#) [USBFTVX2SA2N03A](#) [USBFTV2SA2N03A](#) [1689404-1](#) [FTP-](#)  
[629Y401](#) [FTP-628Y402](#) [943301-001](#) [FNY-W6022](#) [FNY-W6003-03](#) [1310-1015-05](#) [1310-1019-04](#) [0887283402](#) [UA-30AMFM-SL7B02](#) [UA-](#)  
[30AMFM-SL7B01](#) [UA-30AFM-LD7B03](#) [UA-30AMFM-SL7B03](#) [USBAPSCC7202A](#) [UES-1001A160](#) [UES-1003A160](#)  
[USBFTVX7SA2N20A](#) [USBFTVX2SA2N20A](#) [USBFTV2PEMSA2N10A](#) [FTP-629Y602](#) [USBCAMCM100](#) [USB A/F\\*2 to 2.54 2\\*5P-SH](#)  
[L=400mm](#) [EP-CBUSB10P2FLT](#) [1310-1033-01](#) [1310-1037-04](#) [ASR-USB](#) [68784-0075](#) [17-241361](#) [17-230471](#) [217B-BC02](#) [USB-29](#) [19800-](#)  
[010500-200-RS](#) [USB+MINI DIN 6P WITH BKT](#) [84729-0025](#)