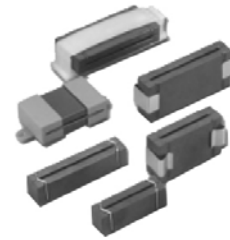


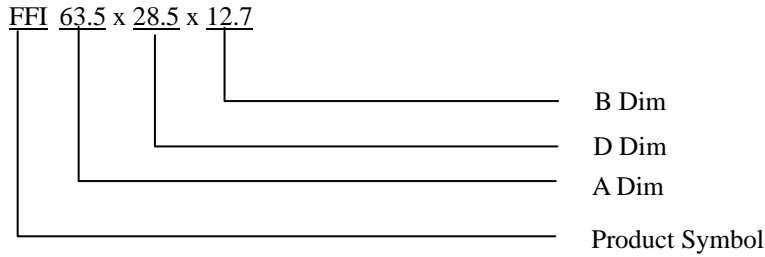
FLAT CABLE EMI CORES / FFI TYPE

APPLICATIONS

- ◆ Cables between pc boards and data connectors, floppy disk and hard disk ribbon cables, printer cables, retrofit, auxiliary EMI attenuation, internal ribbon cables with series digital signal busses



ORDERING CODE

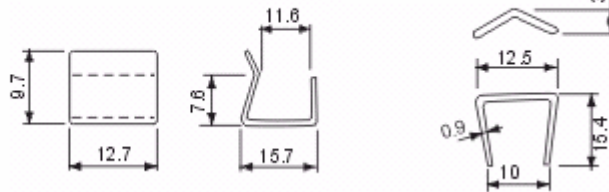


CLIP MATERIAL

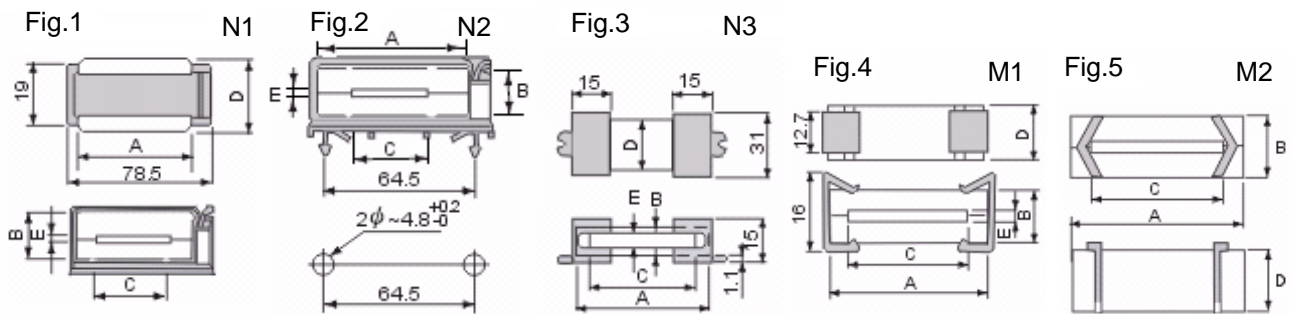
N1,N2,N3: Nylon-66(UL)
Flame Class: 94V-2

M1: Spring Steel
Nickel Coating

M2: Piano wire
Nickel Coating



SHAPES

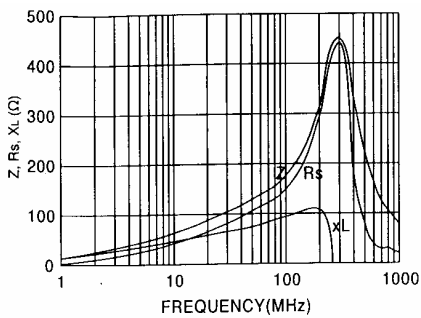


FLAT CABLE EMI CORES / FFI TYPE

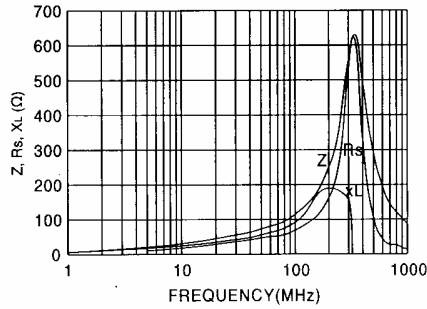
DIMENSIONS: UNIT: mm

Part No.	Fig	A	B	C	D	E	Impedance(Ω)Min	
							25MHz	100MHz
FFI38x15x12.7	5	38.0±1.0	12.7±0.5	26.6±0.7	15.0±0.4	1.6±0.4	40	115
FFI38x25.4x12.7	4	38.0±1.0	12.7±0.5	26.6±0.7	25.4±0.7	1.6±0.4	75	140
FFI45x10x12	5	45.0±1.0	12.7±0.5	34.4±0.7	10.0±0.4	1.6±0.4	40	90
FFI45x15x12.7	5	45.0±1.0	12.7±0.5	34.4±0.7	15.0±0.4	1.6±0.4	40	90
FFI45x28.5x12	4	45.0±1.0	12.7±0.5	34.4±0.7	28.5±0.4	1.6±0.4	70	140
FFI45x28.5x12.7	4	45.0±1.0	12.7±0.5	34.4±0.7	28.5±0.7	1.6±0.4	70	140
FFI45x28.5x12.7	3	45.0±1.0	12.7±0.5	34.4±0.7	28.5±0.7	1.6±0.4	70	140
FFI55.1x15x12.7	5	55.1±1.0	12.7±0.5	43.7±1.0	15.0±0.4	1.6±0.4	40	105
FFI55.1x28.5x12.7	4	55.1±1.0	12.7±0.5	43.7±1.0	28.5±0.7	1.6±0.4	65	140
FFI55.1x28.5x12.7	3	55.1±1.0	12.7±0.5	43.7±1.0	28.5±0.7	1.6±0.4	65	140
FFI63.5x15x12.7	5	63.5±1.2	12.7±0.5	52.0±1.0	15.0±0.4	1.6±0.4	40	95
FFI63.5x28x12	4	63.5±1.2	12.7±0.5	52.0±1.0	28.5±0.7	1.6±0.4	60	150
FFI63.5x28.5x12.7	4	63.5±1.2	12.7±0.5	52.0±1.0	28.5±0.7	1.6±0.4	60	150
FFI63.5x28.5x12.7	1	63.5±1.2	12.7±0.5	52.0±1.0	28.5±0.7	1.6±0.4	60	150
FFI63.5x28.5x12.7	2	63.5±1.2	12.7±0.5	52.0±1.0	28.5±0.7	1.6±0.4	60	150
FFI63.5x28.5x12.7	3	63.5±1.2	12.7±0.5	52.0±1.0	28.5±0.7	1.6±0.4	60	150
FFI76.2x28.5x12.7	1	76.2±1.5	12.7±0.5	65.2±1.2	28.5±0.7	1.6±0.4	60	190
FFI76.2x28.5x12	4	76.2±1.5	12.7±0.5	65.2±1.2	28.5±0.7	1.6±0.4	60	190
FFI76.2x28.5x12.7	3	76.2±1.5	12.7±0.5	65.2±1.2	28.5±0.7	1.6±0.4	60	190

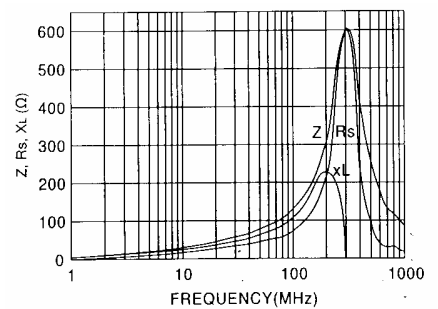
FFI38x25.4x12.7



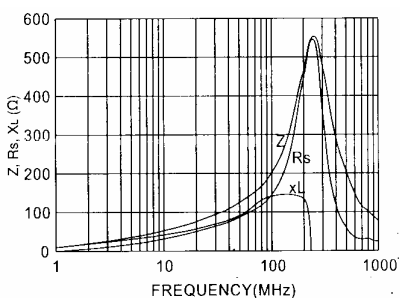
FFI45x15x12.7



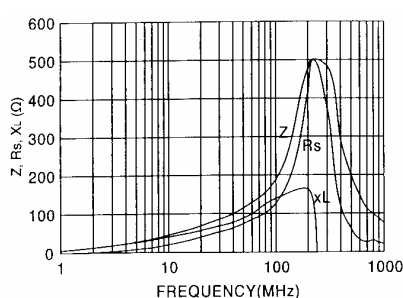
FFI55.1x15x12.7



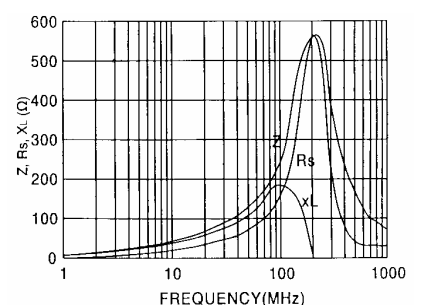
FFI55.1x15x12.7



FFI63.5x28.5x12.7



FFI76.2x28.5x12.7



X-ON Electronics

Largest Supplier of Electrical and Electronic Components

Click to view similar products for [Ferrite Cable Cores](#) category:

Click to view products by [Ferrocore](#) manufacturer:

Other Similar products are found below :

[2643626102](#) [FX28R0984-0](#) [FX28R0984-2](#) [AB 3X2X3SM](#) [2643164251](#) [2643665709](#) [2661626402](#) [LB 2.8X4.5U](#) [28R1127](#) [28R1260](#)
[28R1575](#) [SM28R0760](#) [SM28R1531](#) [2631006302](#) [2643165451](#) [2643178351](#) [28R0760](#) [MS 21X14X4.5 W](#) [SM28B1101](#) [SS7X4X3W](#) [4327](#)
[030 16141](#) [ASSE017-2](#) [2643103102](#) [2643164151](#) [2943666671](#) [4327 030 12611](#) [2643163851](#) [AB4X2X6SM](#) [432703013631](#) [LB4X2X8U](#)
[28B1101](#) [28B0785](#) [SM28R1575](#) [SM28R1260](#) [74270051](#) [2643625902](#) [74278032](#) [2643480009](#) [2673069901](#) [HFB123049-300](#) [HFB143064-](#)
[100](#) [HFB143064-300](#) [HFB170070-000](#) [ETD29/16/10-3C94](#) [ETD29-3F3](#) [ETD39-3C94](#) [RFP1-20-10-A5](#) [RFP1-40-28-M-A5](#) [RFP2-10-10-A5](#)
[RFP2-25-12-A5](#)