

4

3

2

1

THIS DRAWING IS UNPUBLISHED.

RELEASED FOR PUBLICATION

2011

© COPYRIGHT 2011

ALL RIGHTS RESERVED.

LOC
FTDIST
0

REVISIONS

P	LTR	DESCRIPTION	DATE	DWN	APVD
	B1	HOUSNG MATERIAL DETAIL ADDED	05DEC2014	PS	JK

SCALE 2:1
-4 AS SHOWN

1 SEE FIG			
46.50	9	2-1986711-6	
126.50	25	2-1986711-5	
121.50	24	2-1986711-4	
116.50	23	2-1986711-3	
111.50	22	2-1986711-2	
106.50	21	2-1986711-1	
101.50	20	2-1986711-0	
96.50	19	1-1986711-9	
91.50	18	1-1986711-8	
86.50	17	1-1986711-7	
81.50	16	1-1986711-6	
76.50	15	1-1986711-5	
71.50	14	1-1986711-4	
66.50	13	1-1986711-3	
61.50	12	1-1986711-2	
56.50	11	1-1986711-1	
51.50	10	1-1986711-0	
46.50	9	1986711-9	
41.50	8	1986711-8	
36.50	7	1986711-7	
31.50	6	1986711-6	
26.50	5	1986711-5	
21.50	4	1986711-4	
16.50	3	1986711-3	
11.50	2	1986711-2	
"L"	POLE	PART NO	


1 PRELIMINARY PART

MATERIALS:
HOUSING - PA66-UL94 V0, COLOR - GREEN
CLAMPING SPRING - STEEL
PIN - COPPER ALLOY - TIN PLATED

MECHANICAL
PCB THICKNESS - 2.40 MAX
PCB HOLE DIAMETER - 1.20 MIN
STRIP LENGTH - 10-11 MM
OPERATING TEMPERATURE - -40 °C TO +110 °C

ELECTRICAL
WIRE RANGE- 30 TO 12 AWG
VOLTAGE RATING- 300 VOLTS
CURRENT RATING-16 AMP
CONTACT RESISTANCE-15 MILLOHM MAX
INSULATION RESISTANCE-10⁹ OHMS MIN (500V DC)

PCB LAYOUT

THIS DRAWING IS A CONTROLLED DOCUMENT.		DWN 08AUG2011 RAGHAVENDRA	 TE Connectivity		
DIMENSIONS: mm		CHK 08AUG2011 SARVER MICHAEL			
TOLERANCES UNLESS OTHERWISE SPECIFIED:		APVD 08AUG2011 SARVER MICHAEL	NAME SPRING TYPE, SIDE WIRE ENTRY TERMINAL BLOCK SIDE STACKABLE STRAIGHT 02 - 25 POLES PITCH 5.00mm		
0 PLC ± 1 PLC ±0.5 2 PLC ±0.25 3 PLC ± 4 PLC ± ANGLES ±1° FINISH		PRODUCT SPEC	RESTRICTED TO		
MATERIAL SEE NOTES		APPLICATION SPEC	SIZE A3	CAGE CODE 00779	DRAWING NO C-1986711
		WEIGHT -	SCALE 4:1 SHEET 1 OF 2 REV B1		
		CUSTOMER DRAWING			

1470-19 (3/11)

THIS DRAWING IS UNPUBLISHED.

RELEASED FOR PUBLICATION

2011

© COPYRIGHT 2011

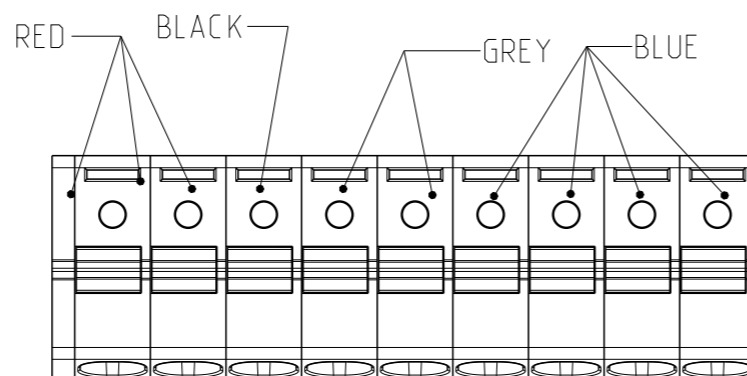
ALL RIGHTS RESERVED.

LOC
FT

DIST
0

REVISIONS

P	LTR	DESCRIPTION	DATE	DWN	APVD
-	-	SEE SHEET 1	-	-	-

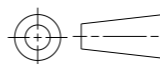


2-1986711-6

THIS DRAWING IS A CONTROLLED DOCUMENT.

DIMENSIONS:

mm



TOLERANCES UNLESS OTHERWISE SPECIFIED:

- 0 PLC ±
- 1 PLC ±0.5
- 2 PLC ±0.25
- 3 PLC ±
- 4 PLC ±
- ANGLES ±1°

MATERIAL

-

FINISH

-

DWN 08AUG2011

RAGHAVENDRA

CHK 08AUG2011

SARVER MICHAEL

APVD 08AUG2011

SARVER MICHAEL

PRODUCT SPEC

-

APPLICATION SPEC

-

WEIGHT

-

CUSTOMER DRAWING



TE Connectivity

NAME

SPRING TYPE. SIDE WIRE ENTRY
TERMINAL BLOCK SIDE STACKABLE
STRAIGHT 02 - 25 POLES PITCH 5.00mm

SIZE

A3

CAGE CODE

DRAWING NO

00779 C-1986711

RESTRICTED TO

-

SCALE 4:1

SHEET 2 OF 2

REV B1

X-ON Electronics

Largest Supplier of Electrical and Electronic Components

Click to view similar products for [Fixed Terminal Blocks](#) category:

Click to view products by [TE Connectivity](#) manufacturer:

Other Similar products are found below :

[00175550202](#) [MBE-1512](#) [MBE-1520](#) [MBE-154](#) [MBE-156](#) [MBES-1510](#) [MBES-153](#) [MBES-156](#) [MH-2512](#) [MHE-132](#) [MHE-133](#) [MHE-163](#)
[MI-254 \(35\)](#) [MI-272](#) [8739](#) [880507](#) [880508](#) [MPT-275](#) [1546551-6](#) [ELM023100](#) [ELM10110G](#) [ELVD12100](#) [BA311TU](#) [BA411SU](#) [MV-152](#)
[MV-253/NCNOC](#) [MV-254-D](#) [MV-255](#) [MV-462](#) [MV-472](#) [MV-493](#) [MVE-252](#) [MVE-253](#) [MVE-258](#) [MVE-273](#) [MVEB-153](#) [1700096](#)
[1702246](#) [1705142](#) [1712417](#) [1713020](#) [1713088](#) [1776118-2](#) [1790852](#) [1-796689-8](#) [1-796692-6](#) [1800001](#) [1800114](#) [1823215](#) [1838462](#)