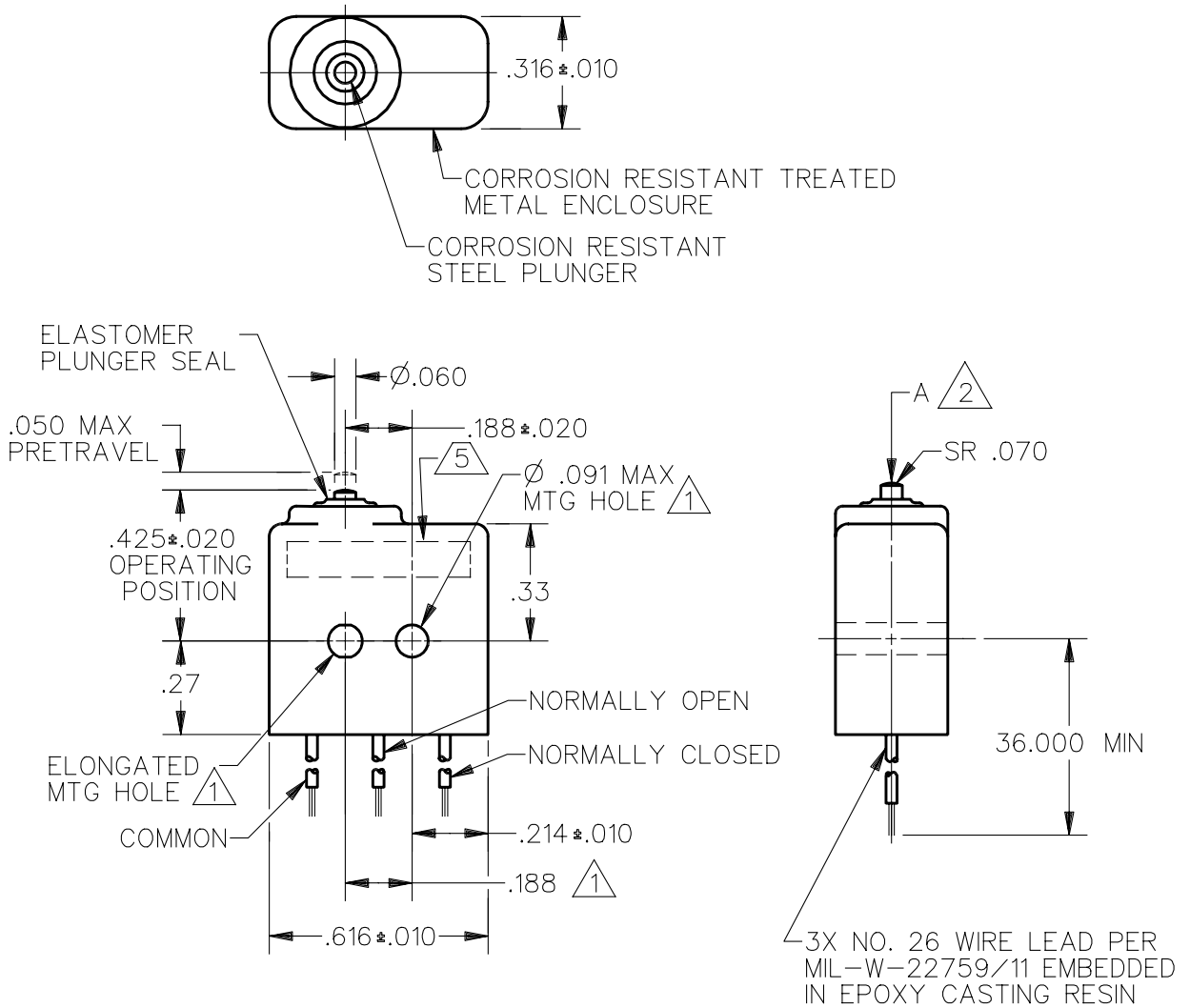


CATALOG LISTING
1XE314
PAGE 1 OF 1
RELEASE NO. PR-21966
REPLACES
ISSUE
3

REVISIONS
A PR-1
21966
JJA
20 DEC 95

DDM/CAD
DRAWN
JJA 20 DEC 95
CHECK

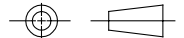


NOTES

- ① MOUNTING HOLES WILL ACCEPT Ø.087 MAX PINS OR SCREWS ON .188±.002 CENTERS
- ② ACTUATION IN LINE WITH ARROW "A" IS RECOMMENDED
- ③ WEIGHT OF SWITCH ONLY IS .16 OZ MAX. WEIGHT OF SWITCH WITH WIRE LEADS IS .55 OZ MAX
- 4 CONTACT MATERIAL: 24K SOLID GOLD
- ⑤ YELLOW MARKING IS ON BOTH SIDES OF HOUSING TO IDENTIFY THAT THIS UNIT HAS GOLD CONTACTS
- 6 SWITCH CONFORMS TO MS-27994-5 EXCEPT FOR WIRE LEADS

THIS DRAWING COVERS A PROPRIETARY ITEM AND IS THE PROPERTY OF MICRO SWITCH, A DIVISION OF HONEYWELL. THIS DRAWING IS NOT TO BE COPIED OR USED WITHOUT THE APPROVAL OF MICRO SWITCH.

THIRD ANGLE PROJECTION



CHARACTERISTICS	ELECTRICAL DATA	SCALE 2:1	DO NOT SCALE PRINT
OPERATING FORCE — — — — 5-17 OZ	CONTACT ARRANGEMENT S P D T	<p>UNLESS OTHERWISE SPECIFIED TOLERANCES ARE</p> <p>ONE PLACE (.0) ±.030</p> <p>TWO PLACE (.00) ±.015</p> <p>THREE PLACE (.000) ±.005</p> <p>ANGLES ±</p>	<p>WEIGHT ③</p>
RELEASE FORCE — — — — 4 OZ MIN	28 VOLTS DC RATING		
RELEASE TRAVEL — — — — .004 MIN	INDUCTIVE — — — SEA LEVEL — — — 1/2 AMP		
DIFFERENTIAL TRAVEL — — — .005 MAX	50,000 FT — — — 1/2 AMP		
OVERTRAVEL — — — — .004 MIN	RESISTIVE — — — SEA LEVEL — — — 1 AMP		
	50,000 FT — — — 1 AMP		

X-ON Electronics

Largest Supplier of Electrical and Electronic Components

Click to view similar products for [Basic / Snap Action Switches](#) category:

Click to view products by [Honeywell](#) manufacturer:

Other Similar products are found below :

[83228001](#) [01.098.1358.1](#) [602EN1-6B](#) [602EN532](#) [602EN535-RB](#) [602HE5-RB1](#) [604HE162](#) [604HE223-6B](#) [624HE17-RB](#) [6HM89](#) [6PA78-JM](#)
[6SE1](#) [6SX1-H58](#) [70500840](#) [MBD5B1](#) [MBH2731](#) [73-316-0012](#) [79211759](#) [79211923](#) [79218589](#) [7AS12](#) [ML-1155](#) [ML-1376](#) [831010C3.0](#)
[831060C3.TL](#) [831090C2.EL](#) [83131904](#) [84212012](#) [8AS239](#) [8HM73-3](#) [903VB1-PG](#) [914CE1-6G](#) [PL-100](#) [11SM1077-H4](#) [11SM1077-H58](#)
[11SM1-TN107](#) [11SM405](#) [11SM703-T](#) [11SM8423-H2](#) [11SX37-T](#) [11SX48-H58](#) [11SX55-H58](#) [11SM2442-T](#) [11SM76-T](#) [11SM77-H58](#)
[11SM77-T](#) [11SM863-T](#) [11SM866](#) [11SX47-H58](#) [A7CN-1M-1-LEFT](#)