



PCB Power Filters FM Series (metal case)

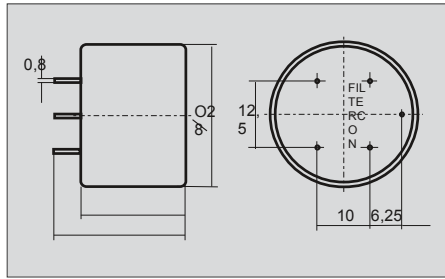
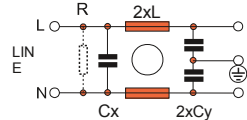
Miniature Printed Circuit Board

Applications

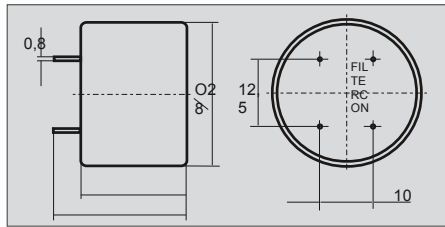
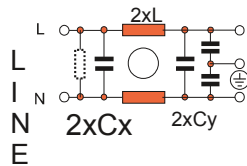
- Personal computers and peripherals
- Digital equipment
- Measuring instruments and medical equipment
- TV & VCR monitors and display units
- Home applications.

Circuit Diagram

FMxxx Series

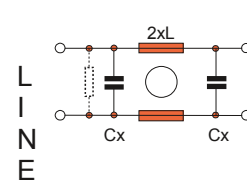


1FMxxx Series



Circuit Diagram

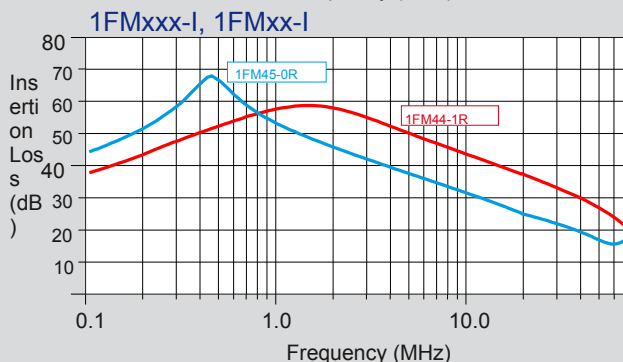
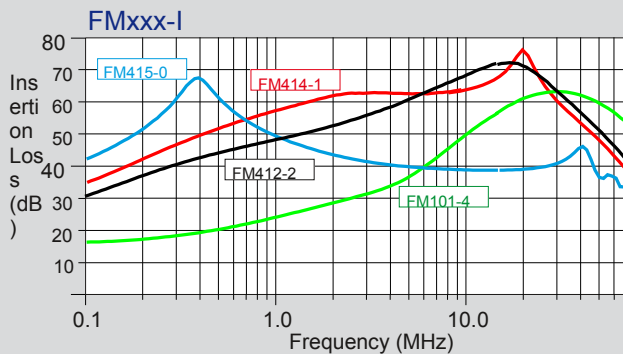
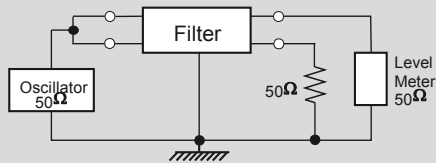
1FMxx Series



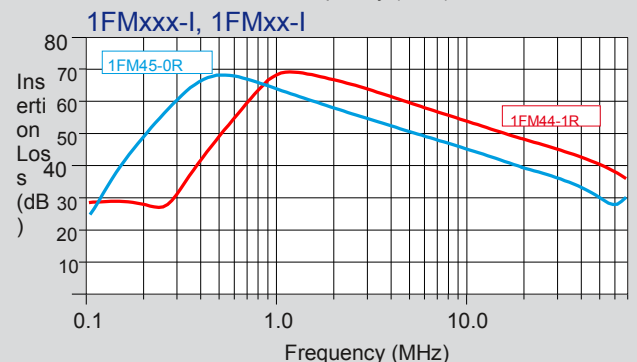
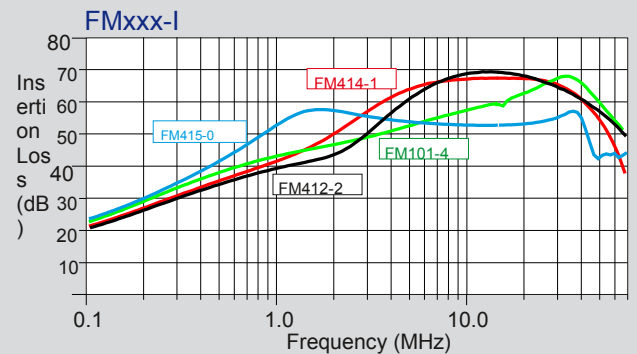
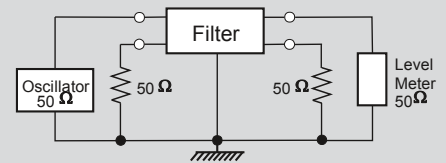
Model	U (V)	I (A)	Cx(nF)	Cy(nF)	L(mH)
FM105-0	250V AC	0,5	10	2,2	
FM315-0, 1FM315-0			47		
FM415-0, 1FM415-0R			100		
FM104-1	250V AC		10	2,2	
FM314-1, 1FM314-1			47		
FM414-1, 1FM414-1R			100		
FM102-2	250V AC		10	2,2	
FM312-2, 1FM312-2			47		
FM412-2, 1FM412-2R			100		
FM101-4	250V AC		10	2,2	0,5
FM311-4, 1FM311-4			47		
FM411-4, 1FM411-4R			100		

Model	U (V)	I (A)	Cx(nF)	L(mH)
1FM35-0	250V AC	0,5	47	
1FM45-0R			100	
1FM34-1	250V AC		47	
1FM44-1R			100	
1FM32-2	250V AC		47	
1FM42-2R			100	
1FM31-4	250V AC		47	0,5
1FM41-4R			100	

Asymmetrical



Symmetrical



X-ON Electronics

Largest Supplier of Electrical and Electronic Components

Click to view similar products for [Fixed Inductors](#) category:

Click to view products by [Filtercon](#) manufacturer:

Other Similar products are found below :

[MLZ1608M6R8WTD25](#) [MLZ1608N6R8LT000](#) [MLZ1608N3R3LTD25](#) [MLZ1608N3R3LT000](#) [MLZ1608N150LT000](#)
[MLZ1608M150WTD25](#) [MLZ1608M3R3WTD25](#) [MLZ1608M3R3WT000](#) [MLZ1608M150WT000](#) [MLZ1608A1R5WT000](#)
[MLZ1608N1R5LT000](#) [B82432C1333K000](#) [PCMB053T-1R0MS](#) [PCMB053T-1R5MS](#) [PCMB104T-1R5MS](#) [CR32NP-100KC](#) [CR32NP-151KC](#) [CR32NP-180KC](#) [CR32NP-181KC](#) [CR32NP-1R5MC](#) [CR32NP-390KC](#) [CR32NP-3R9MC](#) [CR32NP-680KC](#) [CR32NP-820KC](#)
[CR32NP-8R2MC](#) [CR43NP-390KC](#) [CR43NP-560KC](#) [CR43NP-680KC](#) [CR54NP-181KC](#) [CR54NP-470LC](#) [CR54NP-820KC](#) [CR54NP-8R5MC](#)
[MGDQ4-00004-P](#) [MGDU1-00016-P](#) [MHL1ECTTP18NJ](#) [MHL1JCTTD12NJ](#) [PE-51506NL](#) [PE-53601NL](#) [PE-53630NL](#) [PE-53824SNLT](#) [PE-62892NL](#) [PE-92100NL](#) [PG0434.801NLT](#) [PG0936.113NLT](#) [PM06-2N7](#) [PM06-39NJ](#) [HC2LP-R47-R](#) [HC2-R47-R](#) [HC3-2R2-R](#) [HC8-1R2-R](#)