

NOTES

1. ALL DIMENSIONS ARE IN INCHES [MILLIMETERS]

2. DIMENSIONS APPEARING IN TABLE ARE AS FOLLOWS:

a - AS SUPPLIED

b - AFTER UNRESTRICTED RECOVERY

3. COATING (ADHESIVE) IS OPTIONAL

AS SUPPLIED DIMENSIONS APPEARING IN TABLE ARE FOR UNCOATED PARTS.

DIAMETERS WILL BE REDUCED BY .06 MAX. WHEN COATING IS ADDED, ENTRY

4. MOLDING PORTS ARE OPTIONAL. WHEN -00 MODIFICATION NUMBER IS SPECIFIED MOLDING PORTS WILL BE LOCATED AS SHOWN.

REVISIONS	LTR	DESCRIPTION	DATE
Y		REVISED PER ECD-15-010088	07/01/15

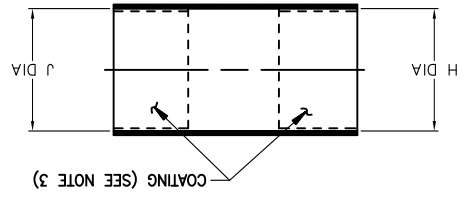
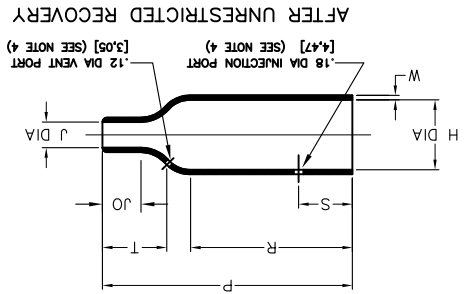


TABLE OF DIMENSIONS

PART NUMBER	H					J				
	Min	Min	Min	Max	Min	Min	Min	Max	Min	Max
202A111	.65	.65	.65	.31	.47	.65	.15	.15	1.00	.56
202A121	.97	.89	.92	.39	.70	.92	.21	.21	1.50	.86
202A132	1.12	1.03	1.05	.56	1.12	.80	.26	.26	2.02	1.10
202A142	1.22	1.22	1.22	.70	1.22	1.00	.29	.29	2.63	1.40
202A153	1.68	1.68	1.68	1.08	1.68	1.07	.37	.37	3.90	2.47
202A174	2.04	1.90	2.04	1.39	2.04	1.90	2.04	2.04	5.13	2.55
202A185	2.60	2.60	2.60	2.60	2.60	2.13	.77	.77	6.35	3.55
202A196	3.40	3.40	3.40	2.25	3.40	2.81	1.06	1.06	8.37	4.45

CUSTOMER DRAWING

UNLESS OTHERWISE SPECIFIED DIMENSIONS ARE IN METRIC DIMENSIONS ARE IN BRACKETS.

DECIMAL TOLERANCES
 .XXX ± 0.005 (0.13 mm)
 .XX ± 0.01 (0.25 mm)
 .X ± 0.1 (2.5 mm)

ANGLE TOLERANCE
 X ± 1 DEG.

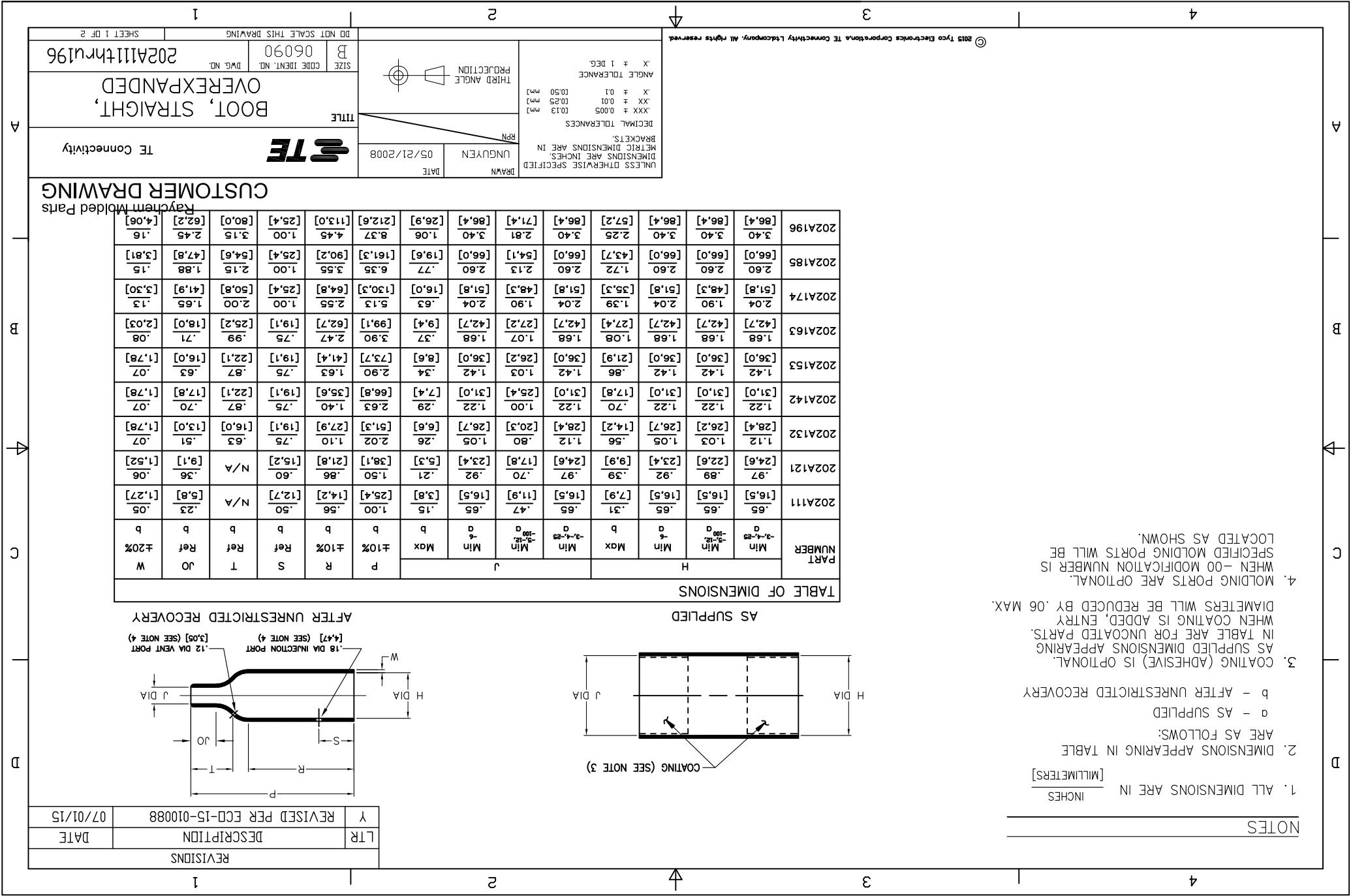
THIRD ANGLE PROJECTION

DATE: 05/21/2008
 DRAWN: UNGUYEN
 RPN:

TITLE: BOOT, STRAIGHT, OVEREXPANDED
 SIZE: B
 CODE IDENT. NO.: 06090
 DWG. NO.: 202A111thru196

TE Connectivity

© 2015 Tyco Electronics Corporation. TE Connectivity Ltd. All rights reserved.



COMPATIBILITY CHART

MATERIAL DASH NO.	MATERIAL DESCRIPTION	RT SPEC	COATING SLASH NO.	COATING SPEC	COATING DESCRIPTION
-3	POLYOLEFIN, SEMI-RIGID	RT-301	/42; /86	S-1017; S-1048	ADHESIVE
-4	POLYOLEFIN, FLEXIBLE	RT-1304	/164; /86; /180	S-1017; S-1048; S-1030	ADHESIVE
-5	ELASTOMER, FLEXIBLE	RT-501	/42;	S-1017	ADHESIVE
-6	SILICONE	RT-602	N/A		
-12	FLUOROELASTOMER	RT-1312	N/A		
-25	ELASTOMER, FLUID RESISTANT	RW-2070	/42; /86; /225	S-1017; S-1048; S-1206	ADHESIVE
-100	POLYOLEFIN, SEMI-FLEXIBLE	RT-1323	/180; /184; /86	S-1030; S-1048	ADHESIVE
	ZEROHAL				

ORDERING INFORMATION

BASE PART NUMBER _____ 202A1XX
 MATERIAL DASH NUMBER _____ -XXX
 MODIFICATION NUMBER _____ -XX
 ADHESIVE SLASH NUMBER _____ /XX

(SEE COMPATIBILITY CHART)
 (IF NECESSARY, SEE COMPATIBILITY CHART)

CUSTOMER DRAWING

SIZE	DWG. NO.	REV.	DWG. NO.	REV.
B	06090	Y	06090	Y

DD NOT SCALE THIS DRAWING

202A111thru196

SHEET 2 OF 2

X-ON Electronics

Largest Supplier of Electrical and Electronic Components

Click to view similar products for [Cable Boots](#) category:

Click to view products by [TE Connectivity](#) manufacturer:

Other Similar products are found below :

[618235-000](#) [622A014-3-0](#) [CX4132-000](#) [879103-4](#) [879515-000](#) [889092](#) [982033-2](#) [R280576000](#) [1300830729](#) [MTPSRBCL-C](#) [1811481-1](#)
[200W531-3-0](#) [202A121-386-0](#) [202A142-4-00/42-0](#) [202A163-4-0-CS5067](#) [202B221-13-0](#) [202B231-13-0](#) [202B563-25-07-0](#)
[202C621710CS5361](#) [202D132-4-07/42-0](#) [202D221-4-0-CS5349](#) [202D221-4-26-0](#) [202D263-25-08-0](#) [202D263-4-22/42-0](#) [202D263-4-88-0](#)
[202D921-2542-0](#) [202E336-71-0](#) [202F211-50-22-0-CS8474](#) [202F242-50-05-0](#) [202F242-51-04/164-0](#) [202K121-25-CS-1858-0](#) [202K121-25-](#)
[CS-2062-0](#) [202K132-25-01/225-0CS8387](#) [202K153-3-0186-0](#) [202S132-25-UP-0](#) [203W301-3/42-0](#) [207W613-100/184-0-CS5657](#) [207W623-](#)
[100-01/184-0](#) [207W634-100/184-0-CS5657](#) [207W656-100-01/184-0](#) [207W667-100-01/184-0](#) [207W667-100/184-0](#) [208A011-3-0](#) [208A021-3-](#)
[0](#) [221A011-51164-0-CS7133](#) [222A121-2586](#) [222A152-342-0](#) [222A213-25-0-CS5613](#) [222D221-25-13/86-0](#) [222D232-4-61-0-CS5078](#)