

**Quietaire sintered  
bronze silencers  
M5, G1/8 bis G1, R1/8 bis R1**

- Reduce the noise levels of pneumatic equipment**
- Compact and efficient**
- Screw directly into the exhaust port**
- Prevent the ingress of dirt**


**Technical data**

Medium:  
Compressed air, filtered, lubricated or non lubricated,  
vacuum, Inert gases

Operation:  
Exhaust silencer or inlet filter

Operating pressure:  
10 bar maximum

Operating temperature:  
-20°C to +80°C  
(consult our Technical Service for use below +2°C)

Mounting:  
Directly in exhaust or vent port

**Port size:**

Metric		BSPP		BSPT	
M5	T40M0500	G1/8A	T40C1800	R1/8	T40B1800
		G1/4A	T40C2800	R1/4	T40B2800
		G3/8A	T40C3800	R3/8	T40B3800
		G1/2A	T40C4800	R1/2	T40B4800
		G3/4A	T40C6800	R3/4	T40B6800
		G1A	T40C8800	R1	T40B8800

**Materials**

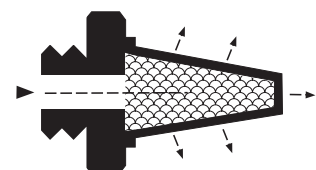
Element: sintered bronze  
Body: brass

**Ordering information**

To order, quote appropriate product number from the tables on the following pages, e.g. T40B3800 for the R 3/8 model

**Alternative models**

M/S & C/S range of porous plastic models, see page N/UK 10.5.011 & N/UK 10.5.012  
Quietaire range of heavy duty models, see page N/UK 10.5.031



## General information

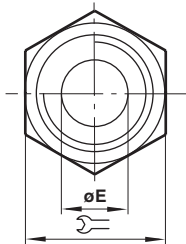
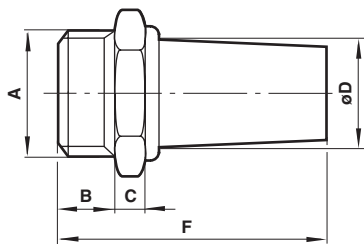
Model Metric/ BSPP	Model BSPT	Port Connection	Flow factor		Continuous Sound pressure level *3)		Weight (kg)
			Cv *2)	C *1)	0.7 bar	6 bar	
T40M0500	–	M5	0,2	1	56	70	0,004
T40C1800	T40B1800	1/8 inch	0,54	2,5	66	75	0,01
T40C2800	T40B2800	1/4 inch	1,6	6,3	68	78	0,02
T40C3800	T40B3800	3/8 inch	3,5	14	75	84	0,045
T40C4800	T40B4800	1/2 inch	5,1	21	75	88	0,07
T40C6800	T40B6800	3/4 inch	9	37	87	96	0,13
T40C8800	T40B8800	1 inch	11,6	48	93	100	0,2


\*1) measured in dm<sup>3</sup>/(s.bar)

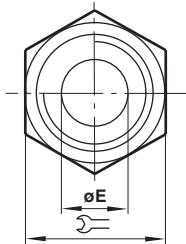
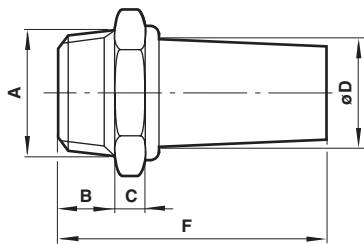
\*2) CV measured in US gall/min

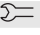
\*3) SPL in dBA at 1m from unit

## Dimensions



Model	A	B	C	Ø D	Ø E	F	
T40M0500	M5	5	15	5	2,5	20	7
T40C1800	G1/8A	6	18	9,5	6	24	13
T40C2800	G1/4A	8	25	12	8,5	33	17
T40C3800	G3/8A	10	34	17	12	44	22
T40C4800	G1/2A	12	44	20	14,5	56	27
T40C6800	G3/4A	14	66	26	19	80	32
T40C8800	G1A	16	66	31	25	82	41



Model	A	B	C	Ø D	Ø E	F	
T40B1800	R1/8	9,5	18	9,5	6	27,5	13
T40B2800	R1/4	11	25	12	8,5	36	17
T40B3800	R3/8	12,5	34	17	12	46,5	22
T40B4800	R1/2	16	44	20	14,5	60	27
T40B6800	R3/4	19	66	26	19	85	32
T40B8800	R1	22,5	66	31	25	88,5	41

## Warning

These products are intended for use in industrial compressed air systems only. Do not use these products where pressures and temperatures can exceed those listed under 'Technical Data'.

Before using these products with fluids other than those specified, for non-industrial applications, life-support systems, or other applications not within published specifications, consult NORGREN. Through misuse, age, or malfunction, components used in fluid power systems can fail in various modes.

The system designer is warned to consider the failure modes of all component parts used in fluid power systems and to provide adequate safeguards to prevent personal injury or damage to equipment in the event of such failure.

**System designers must provide a warning to end users in the system instructional manual if protection against a failure mode cannot be adequately provided.**

System designers and end users are cautioned to review specific warnings found in instruction sheets packed and shipped with these products.

## X-ON Electronics

Largest Supplier of Electrical and Electronic Components

*Click to view similar products for [Other Tools](#) category:*

*Click to view products by [Norgren](#) manufacturer:*

Other Similar products are found below :

[CR-05FL7--150R](#) [CR-05FL7--698K](#) [899-2-KT46](#) [899-5-KT46](#) [CR-0AFL4--332K](#) [CR-12FP4--260R](#) [CRCW04021100FRT7](#)  
[CRCW04021961FRT7](#) [5800-0090](#) [CRCW04024021FRT7](#) [CRCW040254R9FRT7](#) [CRCW0603102JRT5](#) [59065-5](#) [00-8273-RDPP](#) [00-8729-](#)  
[WHPP](#) [593033](#) [593058](#) [593072](#) [593564100](#) [593575](#) [593591](#) [593593](#) [011349-000](#) [CRCW08052740FRT1](#) [LUC-012S070DSM](#) [LUC-](#)  
[018S070DSP](#) [599-2021-3-NME](#) [599-JJ-2021-03](#) [00-5080-YWPP](#) [5E4750/01-20R0-T/R](#) [LW1A-L1-GL](#) [LW1A-P1-GD](#) [LW1L-A1C10V-GL](#)  
[LW1L-M1C70-A](#) [0202-0173](#) [00-9089-RDPP](#) [00-9300-RDPP](#) [CRCW2010331JR02](#) [01-1003W-8/32-10](#) [601-GP-08-KT39](#) [601-JJ-06](#) [601-SPB](#)  
[601YSY](#) [602-JJ-03](#) [602SPB](#) [602Z](#) [603-JJ-07-FP](#) [603-JJY-04](#) [604J](#) [604-JJ-05](#)