

FLEXPOINT® Laser Modules LR-Series

– Now with adjustable focus –

FLEXPOINT® Long Range Laser Modules

At a distance from 1 – 200 m beam diameters from 0.5 mm – 12 mm can be achieved. This makes these lasers perfectly suitable for the alignment of long production lines, the aiming at far-away targets, tunnel building, or the construction of walls and fences.

The LR-series lasers come with an easy focusing mechanism to allow the user to adjust the spot size to a minimum at the working distance.

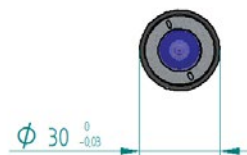
The modules are equipped with bright red 635 nm or green 520 nm laser diodes and deliver an output power between 1 mW and 5 mW.

As accessory, a battery pack is available including recharger and cable to the laser. This allows independent operation for 8 hours.



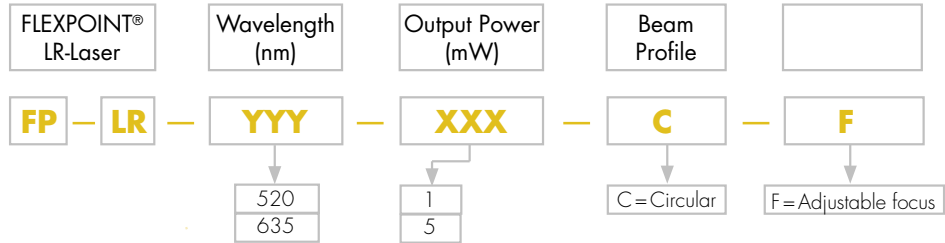
Key Features

- Long range
- Circular beam
- Bright red or green spot color
- Adjustable focus from 1 – 200 m
- Easy handling
- No special power supply necessary



Wavelength	635 nm / 520 nm
Output Power	1 mW or 5 mW, higher power on request
Power Stability	Better +/- 5% (after warm up)
Beam Profile	Circular
Beam Diameter at exit	16 mm
Beam Divergence	0.07 mrad
Bore Sighting	< 3 mrad
Pointing Stability	< 50 µrad/°C
Focus Options	Adjustable between 1– 200 m
Operation Voltage	4.5 – 30 VDC (635 nm) / 10 – 30 VDC (520 nm) reverse voltage protection
Power Consumption	< 100 mA (635 nm) / < 200 mA (520 nm)
Storage Temperature	-10 °C to +60 °C
Housing Size	150/159 mm length; 30 mm +/- 0.03 mm diameter
Housing Material	Black anodised aluminium, isolated (potential free)
Protection Class	IP54
Connector	M12 sensor connector PIN 1: + PIN 2: NC PIN 3: GND PIN 4: NC
Content of delivery	<ul style="list-style-type: none"> ▪ Long range laser ▪ Transport case ▪ Focusing tool
Accessories	Battery Pack incl. Charger and Connecting Cable Power Supply

Ordering Code FLEXPOINT® Laser Modules LR-Series



Standard Modules (Selection)

FP-LR-635-1-C-F	635 nm	1 mW	Circular Beam	Laser Class 2
FP-LR-635-5-C-F	635 nm	5 mW	Circular Beam	Laser Class 3R

Focussed to	Approx. Beam Diameter
10 m	1.0 mm
30 m	1.5 mm
50 m	2.7 mm
100 m	5.5 mm
150 m	8.5 mm
200 m	12 mm

Accessory

LT-PLM-AP-2: Battery pack for mobile applications (only for 635 nm)

This battery pack power supply can be used in mobile applications with all types of the LR laser series. It is not to be used with other equipment than specified. The battery pack and the charger are designed for indoor use only.

LT-PLM-AP-2 Battery pack

Content of Delivery	Battery pack, charger, (4 x plug adapter: Europe, UK, USA, Japan) M12 cable
Input Voltage	110 – 240 VAC / 50 – 60 Hz
Output Voltage	5.0 VDC
Capacity	2400 mAh
Operating Temperature	-20°C to +60°C
Connector	M12 (Pin 1: +/- Pin 3: GND)
Cable Length	2 m
Dimensions	80 mm x 75 mm x 30 mm



LT-PLM-AP-10: Battery pack for mobile applications (for 520 nm and 635 nm)

This battery pack power supply can be used in mobile applications with all laser modules having a M12 connector. It is not to be used with other equipment than specified. The battery pack and the Charger are designed for indoor use only.

LT-PLM-AP-10 Battery pack

Content of Delivery	battery pack, charger with 4x plug adapter (Europe, UK, USA, Japan), M12 cable
Input Voltage	100 – 240 VAC / 50 – 60 Hz
Output Voltage	10 VDC
Capacity	800 mAh
Operating Temperature	-20°C to + 60°C
Connector	M12 (Pin 1: + / Pin 3: GND)
Cable Length	2 m
Dimensions	80 mm x 75 mm x 35 mm



LT-PLM-PS-12: Universal power supply for 100 - 240 Volts AC

This Power Supply can be used worldwide with all types of the LR laser series. It is not to be used with other equipment than specified.

LT-PLM-PS Power Supply

Content of Delivery	Power Supply, 4x plug adapter (Europe, UK, USA, Japan)
Operating Voltage	100-240 VAC / 50-60 Hz
Output Voltage	12 VDC
Output Current	300 mA
Cable Length	1.8m
Connector	M12 female (Pin 1: + / Pin 3: GND)
Operating Temperature	-20°C to + 60°C



X-ON Electronics

Largest Supplier of Electrical and Electronic Components

Click to view similar products for [Distance Sensor Modules](#) category:

Click to view products by [Laser Components](#) manufacturer:

Other Similar products are found below :

[114992561](#) [114991133](#) [TF03-100 420ma](#) [TF03-180 420ma](#) [ILM12F-DOE-520-7-289-F](#) [LC-LMD-635-03-01-A](#) [LC-LMD-650-01-03-A](#) [LC-LMD-650-02-01-A](#) [LC-LMD-650-02-03-A](#) [LC-LMD-650-03-01-A](#) [LC-LMD-650-05-05-A](#) [LC-LMD-780-01-01-A](#) [LC-LMD-780-01-03-A](#) [LC-LMD-850-01-01-A](#) [LC-LMD-850-01-03-A](#) [FP-D-520-5-C-F](#) [FP-D-650-1-C-F](#) [FP-HD-L-635-7-30-F](#) [FP-L-520-10-50-C](#) [FP-D-405-16-E-F](#) [FP-D-635-13-E-F](#) [FP-D-635-17-C-F](#) [FP-D-635-3-E-F](#) [FP-D-635-40-C-F](#) [FP-D-635-7-E-F](#) [FP-D-650-20-C-F-24](#) [FP-D-650-25-E-F](#) [FP-D-650-3-E-F](#) [FP-D-660-40-C-F](#) [FP-D-670-1-C-F](#) [FP-D-670-5-C-F](#) [FP-D-785-50-C-F](#) [FP-D-850-1-C-F](#) [FP-D-850-5-E-F](#) [FP-D-905-7-E-F](#) [FP-L-405-15-50-C](#) [FP-L-635-1-50-C](#) [FP-L-635-5-50-C](#) [FP-L-650-1-50-C](#) [FP-L-850-3-50-C](#) [FP-L-905-5-50-C](#) [ILM12F-DOE-520-7-259-F](#) [FP-MV18-ST-660-20-30-F-STD](#) [ILM12F-D-635-1-C-F](#) [ILM12F-DOE-635-7-247-F](#) [ILM12F-L-520-7-58-F](#) [ILM12F-L-635-7-58-F](#) [LC-LMD-635-02-03-A](#) [LC-LMD-635-03-03-A](#) [LC-LMD-650-01-01-A](#)