

[PRODUCT SEARCH](#) | [NEW PRODUCTS](#) | [DESIGN GUIDE](#) | [CUSTOMER SERVICE](#) | [CROSS-REFERENCE](#) | [DISTRIBUTORS & REPS.](#) | [TECHNICAL ASSISTANCE](#) | [CHECK STOCK](#)  
[HOME](#) | [PLANT TOUR](#) | [ABOUT US](#) | [QUALITY ASSURANCE](#) | [ORDER FREE SAMPLES](#) | [MY CARTS](#) | [DISTRIBUTOR LOGIN](#)

**MILL-MAX** MAXIMUM CONNECTIONS

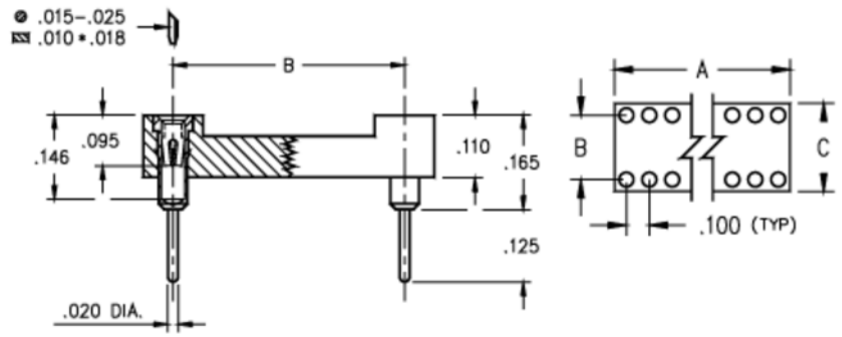
Search by Part Number  Enter Part No.

Home > Product Search > **Product Details**

**PRODUCT DETAILS**

[CATALOG PAGE INCHES](#) | [CATALOG PAGE METRIC](#) | [TECHNICAL ASSISTANCE](#) | [BACK TO SEARCH](#) | [NEW SEARCH](#)

Product Number: 210-XX-XXX-41-101000



**DESCRIPTION:**

DIP Socket  
 Military DIP Socket; MIL-S-83734  
 Standard Solder Tail (0.125 Tail)  
 Closed Frame  
 Through Hole

**MATES WITH:**

- [142-XX-XXX-XX-XXXXXX](#)
- [151-XX-XXX-00-009000](#)
- [151-XX-XXX-00-010000](#)
- [151-XX-XXX-00-011000](#)
- [153-XX-XXX-00-001000](#)

**LOOSE PIN INFORMATION:**

Loose Pin Used=[1001](#)  
 Material=[Brass Alloy](#)

**INSULATOR INFORMATION:**

[PCT](#) High Temperature

**CONTACT:**

[30](#)=Standard 4 Finger Contact  
 Current Rating=3 Amps  
 Material=[Beryllium Copper](#)

**PACKAGING:**

Packaged in Tubes

For Additional plating options click [here](#)  
 All dimensions above are in inches, for metric dimensions click [here](#).

Want to modify this part? Email Technical Services with your application specific requirement.

**Plating Code**

**Shell Plating**

**Inner Contact Plating**

<a href="#">33</a>	30 μ" Gold MIN. over 100 μ" Nickel	30 μ" Gold MIN. over 50 μ" Nickel
<a href="#">83</a>	300 μ" (60/40)Tin/Lead over 50 μ" Nickel	30 μ" Gold MIN.
<a href="#">88</a>	300 μ" (60/40)Tin/Lead over 50 μ" Nickel	100 μ" Tin/Lead over 50 μ" Nickel

**Narrow your search**

How many Pin Positions do you require?  Plating Options:

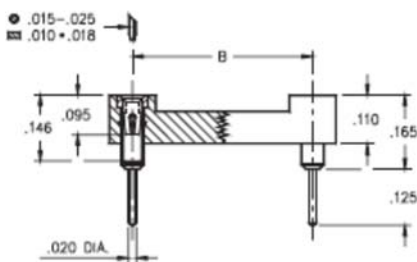
All dimensions in inches unless otherwise noted.

# Of Pins	A	B	C	Qty. per Tube	Military Part Number	Mill-Max Part Number	Free Sample Cart	Availability <input type="checkbox"/> Show In Stock Items Only	RoHS Compliant	Datasheet
6	0.3	0.3	0.4	67	M83734/1-025	210- <a href="#">33</a> -306-41-101000	N/A	<a href="#">In Stock at Factory Contact Distributor for Quote</a>	NO	
8	0.400	0.300	0.400	50	M83734/2-031	210- <a href="#">33</a> -308-41-101000	N/A	<a href="#">In Stock at Distributor</a>	NO	

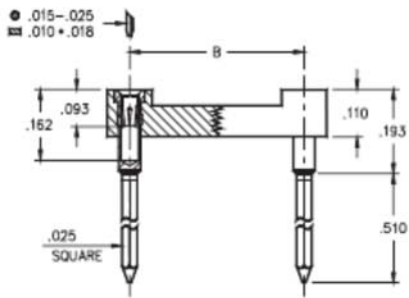
14	0.700	0.300	0.400	28	M83734/3-031	210-33-314-41-101000	N/A	<a href="#">In Stock at Distributor</a>	NO	
16	0.800	0.300	0.400	25	M83734/4-031	210-33-316-41-101000	N/A	<a href="#">In Stock at Distributor</a>	NO	
18	0.900	0.300	0.400	22	M83734/5-031	210-33-318-41-101000	N/A	<a href="#">In Stock at Distributor</a>	NO	
20	1.000	0.300	0.400	20	M83734/13-031	210-33-320-41-101000	N/A	<a href="#">In Stock at Distributor</a>	NO	
22	1.1	0.400	0.500	18	M83734/6-031	210-33-422-41-101000	N/A	<a href="#">Contact Distributor for Price and Delivery</a>	NO	
24	1.2	0.600	0.700	16	M83734/8-031	210-33-624-41-101000	N/A	<a href="#">In Stock at Factory, Contact Distributor for Quote</a>	NO	
28	1.4	0.600	0.700	14	M83734/7-031	210-33-628-41-101000	N/A	<a href="#">In Stock at Distributor</a>	NO	
32	1.6	0.6	0.7	10	M83734/17-013	210-33-632-41-101000	N/A	<a href="#">In Stock at Factory, Contact Distributor for Quote</a>	NO	
40	2.0	0.600	0.700	8	M83734/10-031	210-33-640-41-101000	N/A	<a href="#">In Stock at Distributor</a>	NO	
64	3.2	0.900	1.000	6	M83734/15-031	210-33-964-41-101000	N/A	<a href="#">Contact Distributor for Price and Delivery</a>	NO	
6	0.3	0.3	0.4	67	M83734/1-026	210-83-306-41-101000	N/A	<a href="#">In Stock at Distributor</a>	NO	
8	0.400	0.300	0.400	50	M83734/2-032	210-83-308-41-101000	N/A	<a href="#">In Stock at Distributor</a>	NO	
14	0.700	0.300	0.400	28	M83734/3-032	210-83-314-41-101000	N/A	<a href="#">In Stock at Distributor</a>	NO	
16	0.800	0.300	0.400	25	M83734/4-032	210-83-316-41-101000	N/A	<a href="#">In Stock at Distributor</a>	NO	
18	0.900	0.300	0.400	22	M83734/5-032	210-83-318-41-101000	N/A	<a href="#">In Stock at Distributor</a>	NO	
20	1.000	0.300	0.400	20	M83734/13-032	210-83-320-41-101000	N/A	<a href="#">In Stock at Factory, Contact Distributor for Quote</a>	NO	
22	1.1	0.400	0.500	18	M83734/6-032	210-83-422-41-101000	N/A	<a href="#">Contact Distributor for Price and Delivery</a>	NO	
24	1.2	0.600	0.700	16	M83734/8-032	210-83-624-41-101000	N/A	<a href="#">In Stock at Distributor</a>	NO	
28	1.4	0.600	0.700	14	M83734/7-032	210-83-628-41-101000	N/A	<a href="#">In Stock at Distributor</a>	NO	
32	1.6	0.6	0.7	10	M83734/17-014	210-83-632-41-101000	N/A	<a href="#">In Stock at Distributor</a>	NO	
40	2.0	0.600	0.700	8	M83734/10-032	210-83-640-41-101000	N/A	<a href="#">In Stock at Distributor</a>	NO	

64	3.2	0.900	1.000	6	M83734/15-032	210-83-964-41-101000	N/A	<a href="#">Contact Distributor for Price and Delivery</a>	NO	
6	0.3	0.3	0.4	67	M83734/1-027	210-88-306-41-101000	N/A	<a href="#">In Stock at Distributor</a>	NO	
8	0.400	0.300	0.400	50	M83734/2-033	210-88-308-41-101000	N/A	<a href="#">Contact Distributor for Price and Delivery</a>	NO	
14	0.700	0.300	0.400	28	M83734/3-033	210-88-314-41-101000	N/A	<a href="#">Contact Distributor for Price and Delivery</a>	NO	
16	0.800	0.300	0.400	25	M83734/4-033	210-88-316-41-101000	N/A	<a href="#">Contact Distributor for Price and Delivery</a>	NO	
18	0.900	0.300	0.400	22	M83734/5-033	210-88-318-41-101000	N/A	<a href="#">In Stock at Distributor</a>	NO	
20	1.000	0.300	0.400	20	M83734/13-033	210-88-320-41-101000	N/A	<a href="#">Contact Distributor for Price and Delivery</a>	NO	
22	1.1	0.400	0.500	18	M83734/6-033	210-88-422-41-101000	N/A	<a href="#">Contact Distributor for Price and Delivery</a>	NO	
24	1.2	0.600	0.700	16	M83734/8-033	210-88-624-41-101000	N/A	<a href="#">Contact Distributor for Price and Delivery</a>	NO	
28	1.4	0.600	0.700	14	M83734/7-033	210-88-628-41-101000	N/A	<a href="#">In Stock at Factory. Contact Distributor for Quote</a>	NO	
32	1.6	0.6	0.7	10	M83734/17-015	210-88-632-41-101000	N/A	<a href="#">Contact Distributor for Price and Delivery</a>	NO	
40	2.0	0.600	0.700	8	M83734/10-033	210-88-640-41-101000	N/A	<a href="#">In Stock at Factory. Contact Distributor for Quote</a>	NO	
64	3.2	0.900	1.000	6	M83734/15-033	210-88-964-41-101000	N/A	<a href="#">Contact Distributor for Price and Delivery</a>	NO	

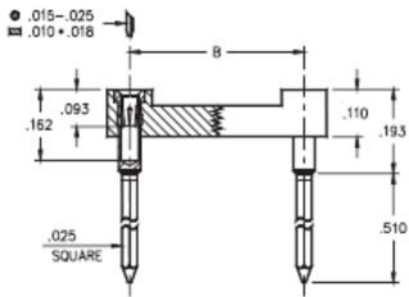
Recently Viewed Products



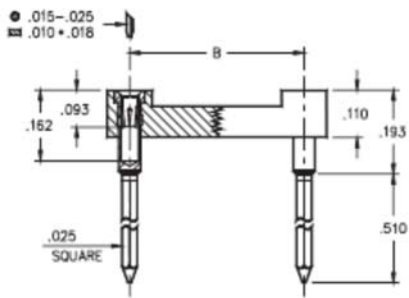
**110-XX-XXX-41-530000**  
 DIP Socket  
 Military DIP Socket; MIL-S-83734  
 Standard Solder Tail (0.125 Tail)



**223-XX-XXX-41-101000**  
DIP Socket  
Military DIP Socket; MIL-S-83734  
3 Level Wrapost Tail



**223-XX-XXX-41-101000**  
DIP Socket  
Military DIP Socket; MIL-S-83734  
3 Level Wrapost Tail



**223-XX-XXX-41-101000**  
DIP Socket  
Military DIP Socket; MIL-S-83734  
3 Level Wrapost Tail

[TOP OF PAGE](#)

## X-ON Electronics

Largest Supplier of Electrical and Electronic Components

*Click to view similar products for [IC & Component Sockets](#) category:*

*Click to view products by [Mill-Max](#) manufacturer:*

Other Similar products are found below :

[714-43-102-31-012000](#) [0066-3-17-15-30-14-02-0](#) [0134-0-15-15-32-27-04-0](#) [614-DG5](#) [6527-0-00-15-00-00-03-0](#) [670](#) [672](#) [673](#) [712-93-120-41-001000](#) [714-93-104-31-018000](#) [8059-4G1-LF](#) [807-22-001-10-001101](#) [807-22-001-10-003101](#) [807-22-001-10-004101](#) [807-22-001-10-006101](#) [807-22-001-30-011101](#) [807-22-001-30-012101](#) [807-22-001-30-013101](#) [807-22-001-30-014101](#) [8-1437531-4](#) [8150-6P10](#) [833-93-034-10-001000](#) [835-43-014-10-001000](#) [851-41-006-10-001000](#) [851-43-008-20-001000](#) [851-43-014-20-001000](#) [851-93-006-20-001000](#) [851-93-010-20-001000](#) [852-10-026-10-001000](#) [853-43-020-10-001000](#) [86.010.0053.0](#) [116-43-306-41-003000](#) [116-43-308-41-007000](#) [116-87-308-41-007101](#) [PX-68LCC](#) [PX-84LCC](#) [121-13-318-41-001000](#) [121-13-320-41-001000](#) [121-13-308-41-001000](#) [123-43-314-41-801000](#) [123-43-420-41-001000](#) [123-43-636-41-001000](#) [123-87-320-41-001101](#) [122-13-316-41-001000](#) [123-13-624-41-001000](#) [123-43-306-41-001000](#) [123-43-322-41-801000](#) [123-43-428-41-001000](#) [123-43-624-41-001000](#) [12-3513-11](#)