

# Product Specification

## Material

Insulator: Glass-filled Thermoplastic  
 PBT, UL94V-0 rates

Contact: Brass or Phosphor Bronze  
 Plated full gold or selected gold in

mating area, 100u" min. tin plated  
 on termination area, with entire contact  
 under-plated 50u" min. Nickel

Electrical

Contact Resistance:  $\leq 20$  milliohms  
 Max at 1 AMP DC.

Insulation Resistance: 5000

megohms at 500 VDC  
 Dielectric Withstanding Voltage:

500 VAC/rms 60Hz for 1 minute

Current Rating: 3 AMP

Voltage Rating: 250 VAC/rms 60Hz

T812 X XX XX C EU

IDC Socket:  
 2.54mm Pitch

Housing Color

0: Grey  
 1: Black

No of Positions:

06: 6 positions  
 :  
 :  
 :  
 64: 64 positions

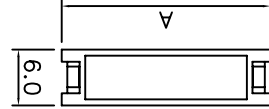
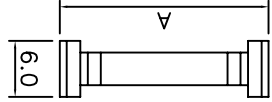
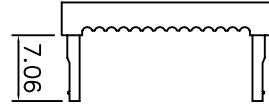
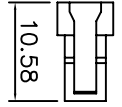
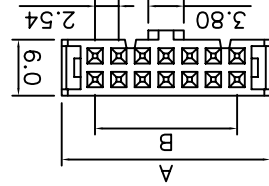
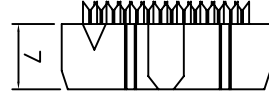
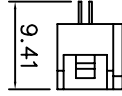
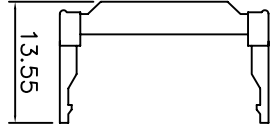
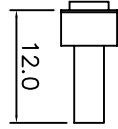
Plating Options:

A1: Flash Gold  
 A2: 15u"/0,4um Gold  
 A3: 30u"/0,8um Gold

SN:Tin

Variation Code:  
 00: W/O Strain Relief  
 01: With Strain Relief

EU: RoHS  
 Compliant  
 C: Fixed Index



Positions		A	B
34	47.80	40.64	43.18
36	50.29	48.26	50.64
40	55.37	53.34	55.72
44	60.56	58.42	60.80
50	68.18	66.04	68.42

Positions		A	B
56	75.74	73.66	76.10
60	80.80	78.64	81.16
62	83.35	81.16	83.72
64	85.90	83.72	86.28

Positions		A	B
6	12.16	5.08	5.08
8	14.74	7.62	7.62
10	17.27	10.16	10.16
12	19.85	12.70	12.70
14	22.40	15.24	15.24

Positions		A	B
16	24.94	17.78	17.78
20	30.00	22.86	22.86
24	35.10	27.94	27.94
26	37.59	30.48	30.48
30	42.66	35.56	35.56



TOLERANCE (mm)	APPROVALS	DATE	TITLE
X. ±0.3	DRAWN Roger	29/Nov/2006	IDC Socket
X.X ±0.2	CHECKED Eric	30/Nov/2006	
X.XX ±0.15	APPROVED Rob K.	01/Dec/2006	
UNLESS OTHERWISE SPECIFIED			

SIZE	UNIT	mm	SCALE
A4	mm	1:1	Scale N.A.

REV.	DESCRIPTION	DATE
B	T812 Series	01/Dec/2006

AMPHENOL  
 Amphenol European  
 Design Center

Scale N.A. Sheet 1 of 1

## X-ON Electronics

Largest Supplier of Electrical and Electronic Components

*Click to view similar products for [Headers & Wire Housings](#) category:*

*Click to view products by [Amphenol](#) manufacturer:*

Other Similar products are found below :

[95000-104TRLF](#) [10135584-644402LF](#) [DF62W-EP2022PCA](#) [95000-106TRLF](#) [DF62W-2022SCA](#) [DF62W-EP2022PC](#) [2203348](#) [DF62W-2022SC](#) [1084018](#) [1029039](#) [1084017](#) [802-10-012-10-002000](#) [1112640](#) [1112639](#) [891-007-9SS-BST1T](#) [000-34000](#) [0008550134](#) [0009482033](#) [0009507031](#) [57102-F02-18ULF](#) [57102-S06-03LF](#) [57202-S52-04LF](#) [PCN6-15S-2.5E](#) [0039019024](#) [58102-G61-06LF](#) [582553-1](#) [0009485154](#) [0009508121](#) [0022285053](#) [0050291907](#) [018731A](#) [LY20-4P-DT1-P1E-BR](#) [02.125.8002.8](#) [60101931](#) [60598-1 \(Cut Strip\)](#) [M1625-3R/100](#) [61062-3](#) [61082-181009](#) [CSU011177004](#) [636-1427](#) [638009-1](#) [641938-9](#) [641991-4](#) [644168-1](#) [644827-2](#) [647662-1](#) [65039-019ELF](#) [65692-001LF](#) [65781-018](#) [65781-047](#)