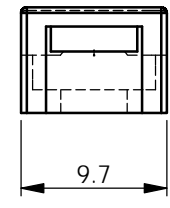
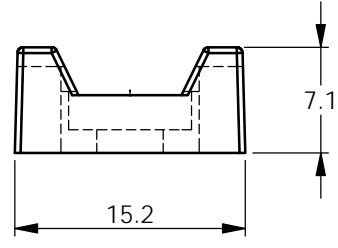
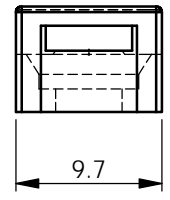
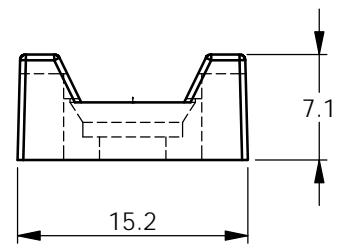
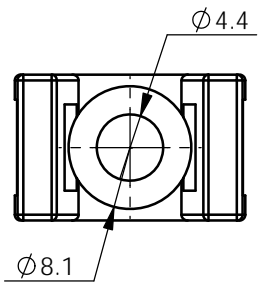
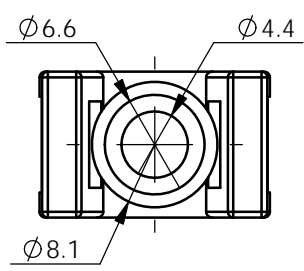


REV.	MODIFICATION.	DATE	DRN
01	CO2011074	18/02/11	SF



FTH-13S-01

FTH-13R-01

MOUNTING RIVETS FOR FTH-13R-01		
RIVET No.	HOLE $\phi$	PANEL THICKNESS
SR-4050	4.1	0.5 - 1.5
SR-4060		1.5 - 2.5
SR-4070		2.5 - 3.5
SR-4080		3.5 - 4.5
SR-4100		5.5 - 6.5

INFORMATION CONTAINED IN THIS DOCUMENT IS CONFIDENTIAL TO RICHCO INTERNATIONAL Co. Ltd. AND MAY NOT BE DISCLOSED OR REPRODUCED IN WHOLE OR PART WITHOUT THEIR WRITTEN CONSENT.

**RICHCO, INC.**  
WWW.RICHCO-INC.COM

ALL DIMENSIONS IN mm  
GENERAL TOLERANCES  $\pm 0.25$   
UNLESS OTHERWISE STATED  
1 DECIMAL PLACE  $\pm$   
2 DECIMAL PLACES  $\pm$   
ANGULAR  $\pm 1^\circ$

THIRD ANGLE

MATERIAL: UL94 V-2 NYLON 6/6, RMS-01* COLOUR: NATURAL					
PART No.	$\phi$ "A"	$\phi$ "B"	CABLE TIE ACCEPTED	MOUNTING METHODS	UL94 V-2 UV STABILIZED NYLON 6/6, RMS-46 COLOUR: BLACK
FTH-13R-01	4.3	8.1 C'BORE	ALL RG CABLE TIES UP TO SIZE RG-220/320	M4 SCREW OR RIVET(SEE TABLE)	SPECIAL ORDER -UVB-M
FTH-13S-01		8.1 C'SINK		M3/M4	

\*AVAILABLE IN UL94 V-0 BY SPECIAL ORDER. TO ORDER REPLACE -01 WITH -19.

MATERIAL: See table			COLOUR: See table		
DESCRIPTION: FLAT TIE HOLDER			PART No: See Table		
DRG No: 011-024		NPR No: XXXX-XXX		SHEET SIZE A4	
DRN SF	DATE 18/02/11	CHKD JK	DATE 18/02/11	SCALE NTS	SHEET No. 1 OF 1

## X-ON Electronics

Largest Supplier of Electrical and Electronic Components

*Click to view similar products for [Cable Ties](#) category:*

*Click to view products by [Richco](#) manufacturer:*

Other Similar products are found below :

[20093-0](#) [SJ-3463](#) [SJ3518FR-1x50](#) [SJ3526N-Beige-2"x50yd](#) [SJ3526N BLACK 58" X 50YD](#) [SJ3571](#) [SJ-3571-1"x50yd-Black](#) [20113-0](#)  
[T56137](#) [3-350087-0](#) [CTB75X75BKA-C](#) [3722](#) [561-B110120](#) [561-EZAB580T](#) [561-EZS375B40](#) [561-N3510](#) [561-TA250125](#) [08350-0](#) [08443-0](#)  
[08600-0](#) [10035-0](#) [10036-0](#) [10037-0](#) [10325-0](#) [10362-0](#) [10606-0](#) [561-EZ250](#) [561-EZ500](#) [561-EZ625](#) [561-EZ750](#) [561-TA00600](#) [SJ3519FR](#)  
[BLACK 1X50](#) [SJ3527N-Beige-2"x50yd](#) [SJ3527N-LOOP-BLACK-1](#) [SJ3572-2"x50yd-Black](#) [157-00039](#) [3719](#) [SJ-3401 BLACK 1"](#) [08445-0](#)  
[08582-0](#) [08386-0](#) [10431-0](#) [08359-0](#) [10056-0](#) [10620-0](#) [10345-0](#) [10344-0](#) [08416-0](#) [08384-0](#) [08401-0](#)