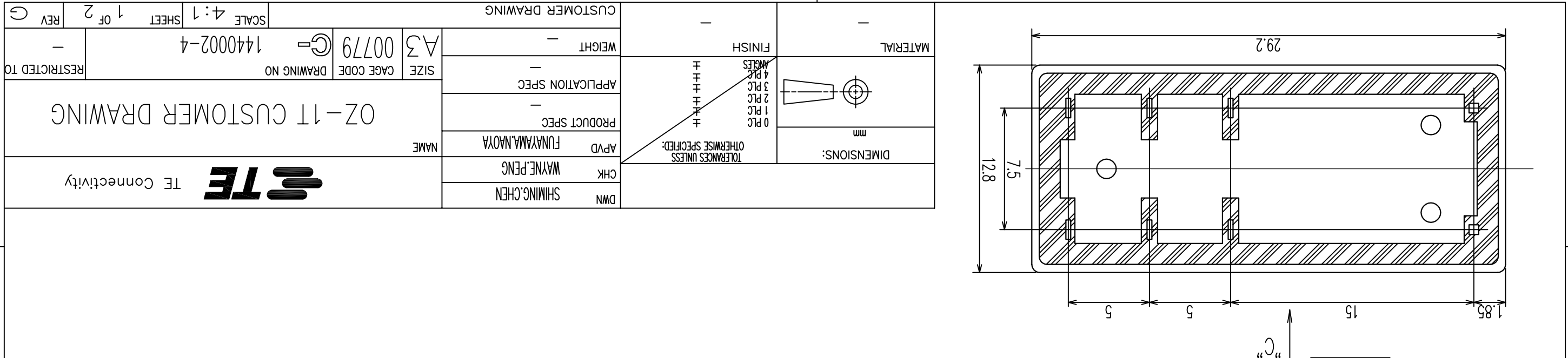
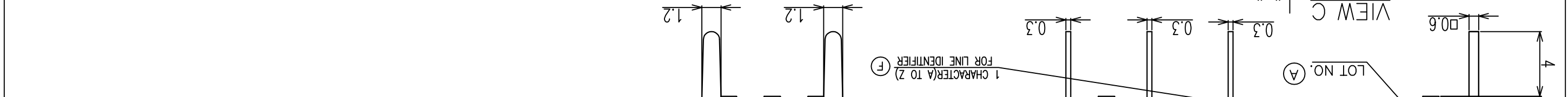
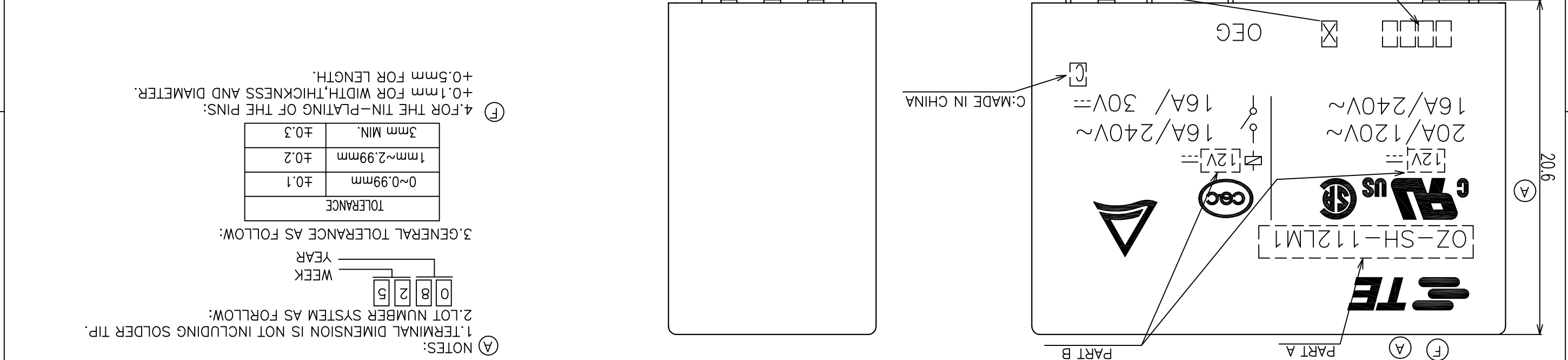
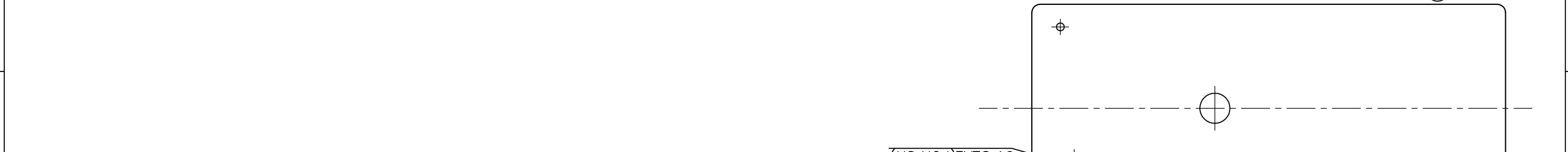
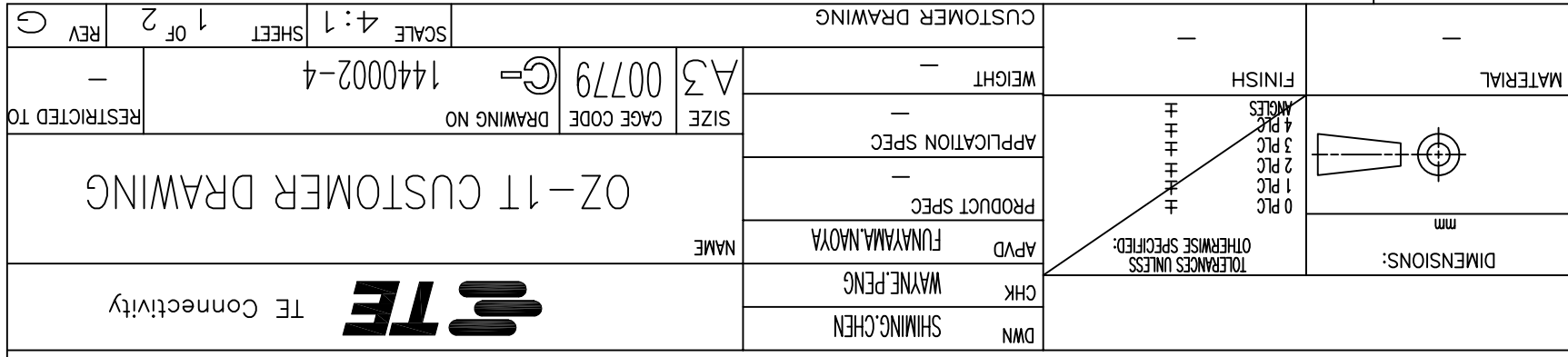


LOC	HB	DIST	REVISIONS		
P	LTR	DESCRIPTION	DATE	DWN	APVD
F		1.UPDATE THE LOGO 2.ADD LINE IDENTIFICATION	6-APR-12		
G		3.TERMINALS TOLERANCE CLARIFICATION 4.VENT HOLE CHANGE	16-DEC-13		
		CHANGE THE VENT HOLE SHAPE FROM RECTANGLE TO CIRCLE	16-DEC-13		
		ECO-13-015347			
		ECO-12-005726			
		ECO-12-005726			



DWN	SHIMING, CHEN	CHK	WAYNE, PENG	APVD	FUNAYAMA, NAOYA	NAME	OZ-1T CUSTOMER DRAWING		
							PRODUCT SPEC	—	
							APPLICATION SPEC	—	
							WEIGHT	—	
							SIZE	A3	
							CAGE CODE	00779	
							DRAWING NO	1440002-4	
							SCALE	4:1	
							SHEET	1 OF 2	
							REV	G	

DIMENSIONS:	mm
TOLERANCES UNLESS OTHERWISE SPECIFIED:	±
0 PLC	±
1 PLC	±
2 PLC	±
3 PLC	±
4 PLC	±
ANGLES	±
FINISH	—
MATERIAL	—
CUSTOMER DRAWING	—



LOC HH
DIST

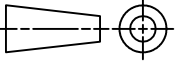
REVISIONS	DESCRIPTION	ECN	DATE	DWN	APVD
1					

PART NO	EC TYPE NAME	PART B	PART A
1-144002-1	OZ-SH-124L	24V	OZ-SH-124L
144002-9	OZ-SH-124D	24V	OZ-SH-124D
1461252-1	OZ-SH-148L	48V	OZ-SH-148L
144002-6	OZ-SH-112D	12V	OZ-SH-112D
144002-4	OZ-SH-105D	5V	OZ-SH-105D
1461354-1	OZ-SS-118D	18V	OZ-SS-118D
3-144002-1	OZ-SS-148L	48V	OZ-SS-148L
2-144002-8	OZ-SS-124L	24V	OZ-SS-124L
2-144002-5	OZ-SS-124D	24V	OZ-SS-124D
2-144002-3	OZ-SS-112L	12V	OZ-SS-112L
2-144002-1	OZ-SS-112D	12V	OZ-SS-112D
1-144002-9	OZ-SS-109L	9V	OZ-SS-109L
1-144002-8	OZ-SS-109D	9V	OZ-SS-109D
1-144002-6	OZ-SS-106L	6V	OZ-SS-106L
1-144002-4	OZ-SS-106D	6V	OZ-SS-106D
1-144002-3	OZ-SS-105L	5V	OZ-SS-105L
1-144002-2	OZ-SS-105D	5V	OZ-SS-105D
1461717-1	OZ-SH-112L	12V	OZ-SH-112L
1-1461250-8	OZ-SH-148L	48V	OZ-SH-148L
1-1461250-6	OZ-SH-148D	48V	OZ-SH-148D
1-1461250-2	OZ-SH-109L	9V	OZ-SH-109L
1-1461250-0	OZ-SH-109D	9V	OZ-SH-109D
0-1461250-8	OZ-SH-106L	6V	OZ-SH-106L
0-1461250-6	OZ-SH-106D	6V	OZ-SH-106D
0-1461250-5	OZ-SH-105L	5V	OZ-SH-105L
0-1461250-3	OZ-SH-105D	5V	OZ-SH-105D
0-1461250-2	OZ-SH-124L	24V	OZ-SH-124L
0-1461250-1	OZ-SH-112D	12V	OZ-SH-112D
0-144002-7	OZ-SH-112L	12V	OZ-SH-112L

RELAY TYPE

PART NO	EC TYPE NAME	PART B	PART A
1-144002-1	OZ-SH-124L	24V	OZ-SH-124L
144002-9	OZ-SH-124D	24V	OZ-SH-124D
1461252-1	OZ-SH-148L	48V	OZ-SH-148L
144002-6	OZ-SH-112D	12V	OZ-SH-112D
144002-4	OZ-SH-105D	5V	OZ-SH-105D
1461354-1	OZ-SS-118D	18V	OZ-SS-118D
3-144002-1	OZ-SS-148L	48V	OZ-SS-148L
2-144002-8	OZ-SS-124L	24V	OZ-SS-124L
2-144002-5	OZ-SS-124D	24V	OZ-SS-124D
2-144002-3	OZ-SS-112L	12V	OZ-SS-112L
2-144002-1	OZ-SS-112D	12V	OZ-SS-112D
1-144002-9	OZ-SS-109L	9V	OZ-SS-109L
1-144002-8	OZ-SS-109D	9V	OZ-SS-109D
1-144002-6	OZ-SS-106L	6V	OZ-SS-106L
1-144002-4	OZ-SS-106D	6V	OZ-SS-106D
1-144002-3	OZ-SS-105L	5V	OZ-SS-105L
1-144002-2	OZ-SS-105D	5V	OZ-SS-105D
1461717-1	OZ-SH-112L	12V	OZ-SH-112L
1-1461250-8	OZ-SH-148L	48V	OZ-SH-148L
1-1461250-6	OZ-SH-148D	48V	OZ-SH-148D
1-1461250-2	OZ-SH-109L	9V	OZ-SH-109L
1-1461250-0	OZ-SH-109D	9V	OZ-SH-109D
0-1461250-8	OZ-SH-106L	6V	OZ-SH-106L
0-1461250-6	OZ-SH-106D	6V	OZ-SH-106D
0-1461250-5	OZ-SH-105L	5V	OZ-SH-105L
0-1461250-3	OZ-SH-105D	5V	OZ-SH-105D
0-1461250-2	OZ-SH-124L	24V	OZ-SH-124L
0-1461250-1	OZ-SH-112D	12V	OZ-SH-112D
0-144002-7	OZ-SH-112L	12V	OZ-SH-112L

(A1)
(A1)
(A1)
(A1)
(A1)
(A1)
(A1)
(A1)



DIMENSIONS:
mm

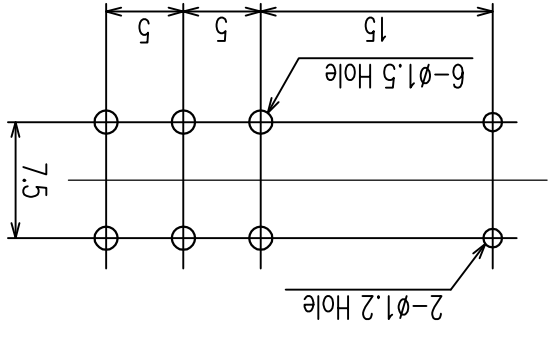
TOLERANCES UNLESS OTHERWISE SPECIFIED:

0 PLC
1 PLC
2 PLC
3 PLC
4 PLC
ANGLES

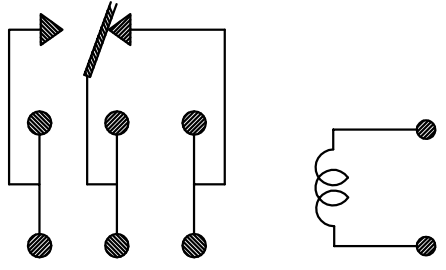
MATERIAL

FINISH

CIRCUIT DIAGRAM(2/1)
(BOTTOM VIEW)



DRILLING DIAGRAM
(BOTTOM VIEW)



DWN SHIMING,CHEN
CHK WAYNE,PENG
APVD FUNAYAMA,NAOYA

NAME

OZ-1T CUSTOMER DRAWING



CUSTOMER DRAWING	SCALE 4:1	SHEET 2 OF 2	REV
WEIGHT	SIZE A3	CAGE CODE 00779	DRAWING NO 144002-4
APPLICATION SPEC	PRODUCT SPEC	APVD	NAME
FINISH	TOLERANCES UNLESS OTHERWISE SPECIFIED:	CHK	TE Connectivity

A

B

C

D

A

B

C

D

X-ON Electronics

Largest Supplier of Electrical and Electronic Components

Click to view similar products for [General Purpose Relays](#) category:

Click to view products by [TE Connectivity](#) manufacturer:

Other Similar products are found below :

[APF30318](#) [JVN1AF-4.5V-F](#) [PCN-105D3MHZ](#) [5JO-10000S-SIL](#) [5JO-1000CD-SIL](#) [5JO-400CD-SIL](#) [LY2S-AC220/240](#) [LYQ20DC12](#)
[6031007G](#) [6131406HQ](#) [6-1393099-3](#) [6-1393099-8](#) [6-1393122-4](#) [6-1393123-2](#) [6-1393767-1](#) [6-1393843-7](#) [6-1415012-1](#) [6-1419102-2](#) [6-](#)
[1423698-4](#) [6-1608051-6](#) [6-1608067-0](#) [6-1616170-6](#) [6-1616248-2](#) [6-1616282-3](#) [6-1616348-2](#) [6-1616350-1](#) [6-1616350-8](#) [6-1616358-7](#) [6-](#)
[1616359-9](#) [6-1616360-9](#) [6-1616931-6](#) [6-1617039-1](#) [6-1617052-1](#) [6-1617090-2](#) [6-1617090-5](#) [6-1617347-5](#) [6-1617353-3](#) [6-1617801-8](#) [6-](#)
[1617802-2](#) [6-1618107-9](#) [6-1618248-4](#) [M83536/1-027M](#) [CX-4014](#) [MAHC-5494](#) [MAVCD-5419-6](#) [703XCX-120A](#) [7-1393100-5](#) [7-1393111-7](#)
[7-1393144-5](#) [7-1393767-8](#)