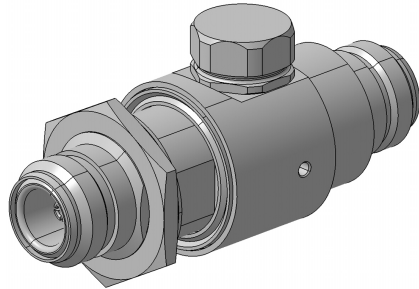


**EMP Protector: 3402.17.A Rev.: K****Description**

GDT technology up to 2.5 GHz

**Benefits**

Broad-band design

DC continuity for remote powering

The protector can also be installed reversely

Delivered without gas discharge tube

Data refer to GDT 9071.99.0547, 230 V

Compliant to IEC 61643-21

**Product Configuration**

Main path connectors Port 1: unprotectedNjack (female) - Port 2: protectedNjack (female)

Mounting and grounding MH25

Side of bulkhead protected side

**Technical Data****Electrical Data**

Impedance	50 $\Omega$
Frequency range	0 to 2500 MHz
Return loss	$\geq 20$ dB
Insertion loss	$\leq 0.2$ dB
RF CW power	$\leq 150$ W
PIM 3rd order	not specified
Surge current handling capability	30 single / 20 multiple kA (test pulse 8/20 $\mu$ s)

Residual pulse energy 350  $\mu$ J typically (test pulse 4 kV 1.2/50  $\mu$ s / 2 kA 8/20  $\mu$ s) main path - protected side

### Mechanical Data

Weight 126 g

### Environmental Data

Operating temperature -40 °C to + 85 °C

Waterproof degree IP 65 (according to IEC 60529, data refer to the coupled state)

2011/65/EU (RoHS) compliant

### Material Data

#### Piece Parts

Housing

Port 1 center contact

Port 2 center contact

#### Material

Brass

Copper Beryllium Alloy

Copper Beryllium Alloy

#### Surface Plating

SUCOPLATE (R) Plating

Gold Plating (without Nickel underplating)

Gold Plating (without Nickel underplating)

### Related Documents

Outline drawing DOU-00019177.1

Mounting instruction DOC-0000176104

### Remarks

Customer number NATO: NSN 5920-99-773-3078

## X-ON Electronics

Largest Supplier of Electrical and Electronic Components

*Click to view similar products for [RF Adapters - In Series](#) category:*

*Click to view products by [Huber & Suhner](#) manufacturer:*

Other Similar products are found below :

[5919-1503-000](#) [5919-9503-000](#) [651A505](#) [7122-1502-000](#) [9030-9523-502](#) [932A505](#) [PN2C](#) [A0407000](#) [R114703000](#) [R114703000W](#)  
[R114753000](#) [R125704000](#) [R127871001](#) [R141704000W](#) [R141710000W](#) [R141723161](#) [R141730000](#) [R141770000](#) [R142704000W](#)  
[R142720000](#) [R142720700](#) [R143730700](#) [R143770000](#) [R161703000W](#) [R161730000](#) [R161730000W](#) [R161753000W](#) [R161791530W](#)  
[R176770000](#) [R201705000](#) [R222705200](#) [R222M40010W](#) [R222M40050](#) [R223703020](#) [R223703080](#) [R300.124.403](#) [R316754000](#) [AD78TL](#)  
[HRM-513S](#) [1996352-2](#) [2157155-1](#) [2101130-1](#) [R114704000W](#) [R114720000W](#) [R125705000](#) [R125705001](#) [R125705701](#) [R125771000](#)  
[R125791501W](#) [R127703001](#)