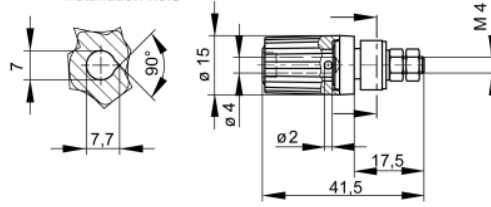


datasheet for PKI 100  
 article number: 930757100



<b>product description:</b>	order number: 930 757-100
<b>description:</b>	Pole terminal with captive insulated head, which is held under constant pressure against the insulated rings by a spring. 4 mm diameter nickel-plated, brass threaded bolt with 2 mm diameter transverse hole. For non-rotating installation in switchpanels and equipment chassis with wall thickness up to 3.5 mm.
<b>typ:</b>	PKI 100 schwarz/black
<b>system:</b>	4mm system
<b>order number:</b>	930 757-100
<b>color</b>	●
<b>other color versions:</b>	●●●●●●
<b>technical data</b>	
<b>measurement category acc. to IEC 61010:</b>	CAT I
<b>type of contact:</b>	4 mm socket (unsprung), 2 mm cross hole
<b>type of termination:</b>	M4 thread
<b>rated voltage:</b>	30 VAC / 60 VDC
<b>rated current:</b>	35 A
<a href="#">Please consider derating curve!</a>	
<b>contact resistance:</b>	2 mOhm
<b>mounting:</b>	screw
<b>material</b>	
<b>contact material:</b>	brass
<b>contact surface material:</b>	nickel
<b>housing material:</b>	PA
<b>environmental conditions:</b>	
<b>temperature range:</b>	-25 °C to +100 °C
<b>flammable class:</b>	
<b>housing (basic material):</b>	UL 94 V - 2
<b>drawing</b>	

Einbauöffnung  
installation hole



## X-ON Electronics

Largest Supplier of Electrical and Electronic Components

*Click to view similar products for [Test Plugs & Test Jacks](#) category:*

*Click to view products by [Hirschmann](#) manufacturer:*

Other Similar products are found below :

[579-0400](#) [66000-7](#) [R644543000](#) [R921923000](#) [R921930000](#) [R941344000](#) [R948161000](#) [R999351000](#) [1408-4](#) [1533-1](#) [174-R825B-EX](#)  
[NYS508-BU](#) [NYS508-O](#) [1680](#) [174-R819B-EX](#) [R644543003](#) [R644543020](#) [R644543021](#) [R921926000](#) [R921931000](#) [R921932000](#)  
[R921934000](#) [R929991000](#) [R941460000](#) [R941461000](#) [R941463600](#) [R941920600](#) [R948160000](#) [31B-2-RED](#) [032-0016-023](#) [105-1106-001](#)  
[108-1000-106](#) [108-2301-621](#) [111-0707-001](#) [66001-9](#) [7013](#) [1395080-1](#) [930166100](#) [NYS508-GR](#) [NYS508-V](#) [NYS508-W](#) [NYS508-Y](#)  
[NYS511-R](#) [BP30-2BR10-B PKG](#) [BP30-10-WT](#) [BP30-2BR-B PKG](#) [BP30Y-1 PKG](#) [R941049000](#) [R941340000](#) [R948141029](#)