

LARGE ALUMINUM ELECTROLYTIC CAPACITORS

GL Screw Terminal Type, Long Life Series

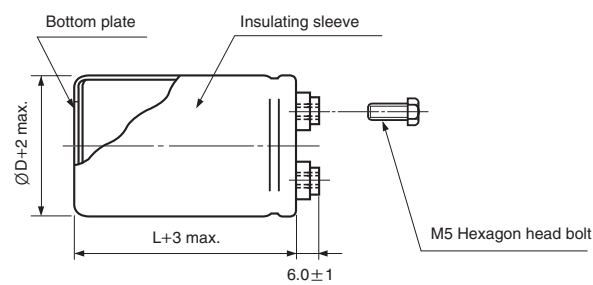
- Screw terminal series in compact case sizes
- High reliability, long life guaranteed for 20000 hours load life at 85°C
- Suited for use in industrial power supplies for inverters
- Complied to the RoHS directive



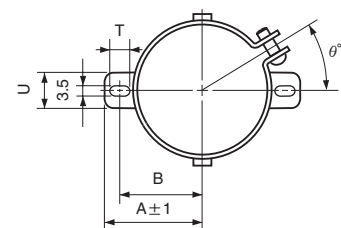
Item	Characteristics	
Operating temperature range	-25 ~ +85°C	
Capacitance tolerance	±20% at 120Hz, 20°C	
Leakage current max.	$I=3\sqrt{CV}$ (µA) (after 5 minutes)	
Dissipation factor max.	0.20 max. at 120Hz, 20°C	
Load life (after application of the rated voltage for 20000 hours at 85°C)	Leakage current	Less than specified value
	Capacitance change	Within ±20% of initial value
	tanδ	Less than 300% of specified value
Shelf life (at 85°C)	After 1000 hours no load test, leakage current, capacitance and tanδ are same as load life value.	

● DRAWING

Unit : mm

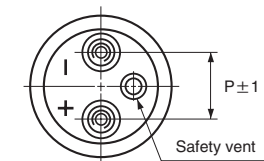


● TWO LEGS ANGLE

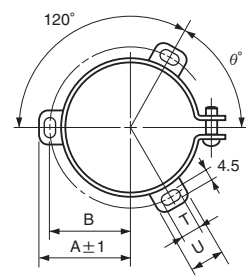


● TWO LEGS ANGLE SIZE TABLE

ØD	B	A	T	U	θ°	P
51	33.6	39.9	6	14	30	22
63.5	40.8	46.8	6	14	30	28.6



● THREE LEGS ANGLE



● THREE LEGS ANGLE SIZE TABLE

ØD	B	A	T	U	θ°	P
51	32.9	38.9	7	12	60	22
63.5	38.4	45.3	7	14	60	28.6
76.2	44.5	51.5	8	16	60	31.8
89	50.8	61	8	16	60	31.8

LARGE ALUMINUM ELECTROLYTIC CAPACITORS



GL series

● DIMENSIONS & MAXIMUM PERMISSIBLE RIPPLE CURRENT

WV µF	Item ØD×L (mm)	350		400		450			
		Ripple current (A rms)		Ripple current (A rms)		Ripple current (A rms)			
		40°C 120Hz	85°C 120Hz	40°C 120Hz	85°C 120Hz	40°C 120Hz	85°C 120Hz		
1500						51×110	13.4	6.1	
1800				51×110	14.6	6.6	51×130	15.7	7.1
2200	51×110	16.2	7.3	51×130	17.3	7.9	63.5×110	17.2	7.8
2700	51×130	19.2	8.7	63.5×110	19.0	8.7	63.5×130	20.3	9.2
3300	63.5×100	20.3	9.2	63.5×130	22.5	10.2	76.2×110	21.7	9.9
3900	63.5×110	22.9	10.4	76.2×100	22.7	10.3	76.2×130	25.1	11.4
4700	76.2×100	25.0	11.4	76.2×130	27.6	12.5	76.2×150	29.1	13.2
5600	76.2×110	28.2	12.8	76.2×150	31.8	14.5	76.2×160	32.7	14.8
6800	76.2×130	33.1	15.1	76.2×160	36.0	16.4	89×150	38.5	17.5
8200	76.2×150	39.5	18.0	89×150	42.3	19.2	89×160	43.4	19.7
10000	89×150	46.7	21.2	89×160	47.9	21.8			
12000	89×160	52.5	23.9						

● PERMISSIBLE RIPPLE CURRENT MULTIPLIERS

Frequency	50Hz	120Hz	300Hz	1kHz	3kHz
Coefficient	0.8	1.0	1.1	1.3	1.4

X-ON Electronics

Largest Supplier of Electrical and Electronic Components

Click to view similar products for [Aluminium Electrolytic Capacitors - Screw Terminal](#) category:

Click to view products by [Samwha](#) manufacturer:

Other Similar products are found below :

[A331FH221M500A](#) [A331FB472M063A](#) [A331FD153M040A](#) [A331FD682M063A](#) [A331LH223M063A](#) [A331PM682M200A](#)
[36DA332F350CD2A](#) [ETOR401CTH902QEG8N](#) [C1808N680J302T](#) [A331PM472M250A](#) [500X822U450DG1B](#) [A331LH683M025A](#)
[A331LM333M063A](#) [A331TW682M500A](#) [500332U050BB2B](#) [ALS31B1003NX](#) [E32D600LPN133TDA5M](#) [550152M200BC2B](#)
[36DX253G075DC2A](#) [101C282U063AK2A](#) [DB301V-3.5-3P-GN](#) [DB301V-3.5-2P-GN](#) [WR479M1JT1LO5](#) [OBJ35](#) [OBJ35A](#)
[WL338M2WU1AD6](#) [WL 10000U/100V](#) [WL 4700U/200V](#) [B43310A5109M000](#) [B43310C9228M000](#) [B43310A9828M000](#)
[GT1H109M35060SB](#) [GT1H229M35100SB](#) [GT1J229M35120SB](#) [GT2A229M51100SB](#) [GT2W227M35060SB](#) [GT2W228M64120SB](#)
[WR229M1JS80O5](#) [WR188M2WS1MO5](#) [WL158M2WS1AO5](#) [WR478M2WU1PD6](#) [2738](#) [ALS30A151DB500](#) [ALS30A152KF350](#)
[ALS30A682DF100](#) [ALS31A103DE063](#) [ALS40A223DB025](#) [ALS40A223KF063](#) [ALS40A472DF100](#) [ALS40A473DF025](#)