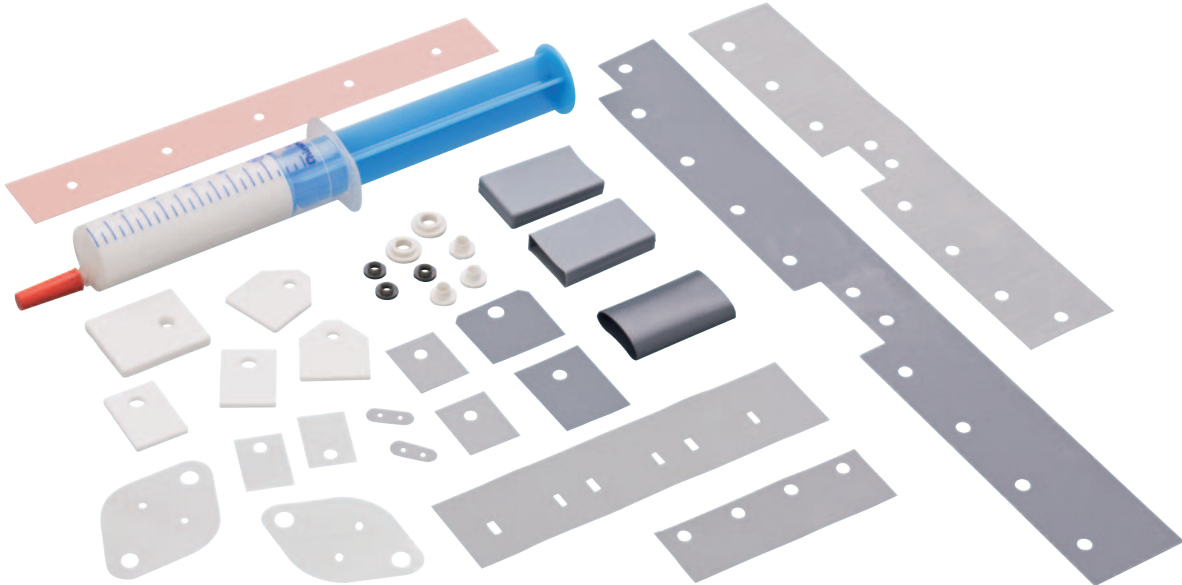


Chapter Content	Page
Insulation Material	
Insulation Wafers – Silicone	90 – 91
Insulation Wafers – Mica	92
Thermal Compounds	92
Insulation Wafers – Aluminium Oxide	93
Insulation Bushes – Plastic Materials	94
Insulation Caps and Tubes – Silicone	95

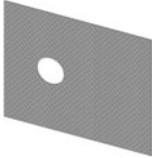
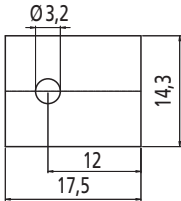


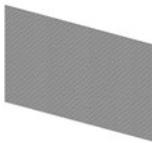
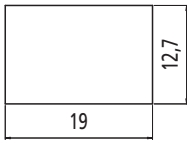
Insulation Material

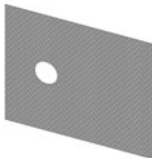
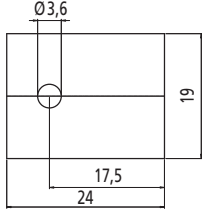
Insulation wafers – silicone (standard shapes)

Glass fibre reinforced silicone foil in combination with insulation bushes facilitate insulated mounting of semiconductors, e.g. to heatsinks. They are highly flexible and ensure optimal heat conductivity even without using thermal compounds.

Common technical data	Colour:	grey
	Hardness:	85 ShoreA (Test ASTM D2240)
	Elongation:	2% (Test ASTM D 412)
	Tolerance:	+/-0.02 mm
	Temperature range:	-60/+200 °C UL listed

For cases: TO 220	Type SI 488	Type SI 489		
Thickness:	0.18 mm	0.23 mm		
R _{th} :	1.25 K/W	1.5 K/W		
Dielectric strength:	c. 4 KV	c. 5 KV		
Dielectric coefficient:	2.56 (at 10 ⁶ Hz)	2.29 (at 10 ⁶ Hz)		


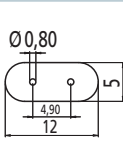
For cases: TO 220	Type SI 487/5	Type SI 498/5		self-adhesive on one side, for clip mounting 
Thickness:	0.18 mm	0.23 mm		
R _{th} :	1.3 K/W	1.6 K/W		
Dielectric strength:	c. 4 KV	c. 5 KV		
Dielectric coefficient:	2.56 (at 10 ⁶ Hz)	2.29 (at 10 ⁶ Hz)		

For cases: TOP 3 (TO 218)	Type SI 490	Type SI 491		
Thickness:	0.18 mm	0.23 mm		
R _{th} :	0..9 K/W	1.0 K/W		
Dielectric strength:	c. 4 KV	c. 5 KV		
Dielectric coefficient:	2.56 (at 10 ⁶ Hz)	2.29 (at 10 ⁶ Hz)		

For cases: Multiwatt	Type SI 492			
Thickness:	0.18 mm			
R _{th} :	0.8 K/W			
Dielectric strength:	c. 4 KV			
Dielectric coefficient:	2.56 (at 10 ⁶ Hz)			

For cases: SOT 32	Type SI 485			
Thickness:	0.18 mm			
R _{th} :	3.0 K/W			
Dielectric strength:	c. 4 KV			
Dielectric coefficient:	2.56 (at 10 ⁶ Hz)			

For cases: TO 3	Type SI 480			
Thickness:	0.18 mm			
R _{th} :	0.33 K/W			
Dielectric strength:	c. 4 KV			
Dielectric coefficient:	2.56 (at 10 ⁶ Hz)			

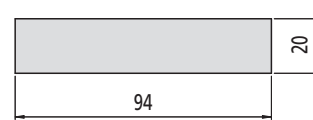
For cases: Quarze	Type SI 497	Type SI 499		
Thickness:	0.18 mm	0.23 mm		
Dielectric strength:	c. 4 KV	c. 5 KV		
Dielectric coefficient:	2.56 (at 10 ⁶ Hz)	2..29 (at 10 ⁶ Hz)		

Glass fibre reinforced silicone foil in combination with insulation bushes facilitate insulated mounting of semiconductors, e.g. to heatsinks. They are highly flexible and ensure optimal heat conductivity even without using thermal compounds.

Common technical data	Colour:	grey
	Hardness:	85 ShoreA (Test ASTM D2240)
	Elongation:	2% (Test ASTM D 412)
	Tolerance:	+/-0.02 mm
	Temperature range:	-60/+200 °C UL listed

For: Multiple Mounting	Type SI 6018/S	Type SI 6023/S
Thickness:	0.18 mm	0.23 mm
Dielectric strength:	c. 4 KV	c. 5 KV
Dielectric coefficient:	2.56 (at 10 ⁶ Hz)	2.29 (at 10 ⁶ Hz)

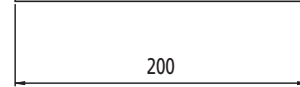
self-adhesive on one side, for clip mounting



Silicone sheet as experimental board:	Type SI 4018	Type SI 4023
Thickness:	0.18 mm	0.23 mm
Dielectric strength:	c. 4 KV	c. 5 KV
Dielectric coefficient:	2.56 (at 10 ⁶ Hz)	2.29 (at 10 ⁶ Hz)

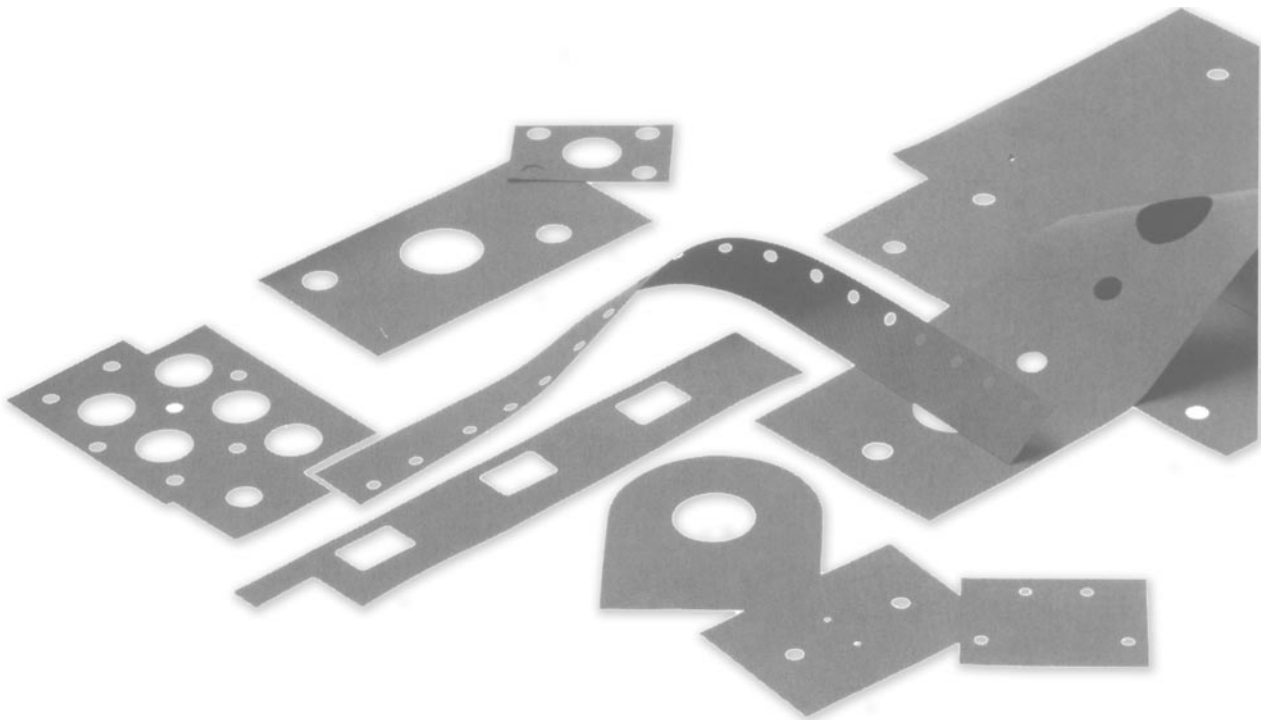


Silicone sheet as experimental board: (self-adhesive on one side)	Type SI 4018/S	Type SI 4023/S
Thickness:	0.18 mm	0.23 mm
Dielectric strength:	c. 4 KV	c. 5 KV
Dielectric coefficient:	2.56 (at 10 ⁶ Hz)	2.29 (at 10 ⁶ Hz)



Custom-made formats on request

- custom designed in all configurations
- cost-saving assembly of several components on one insulating sheet



Insulation Material

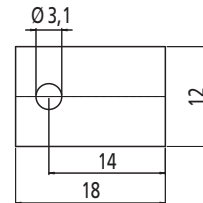
Insulation wafers – mica, thermal compounds

Mica wafers in combination with insulating bushes facilitate the insulated mounting of semiconductors to heatsinks and other components. To avoid pockets of air bubbles, to use a thermal compound is recommended.

Common technical data	Colour:	clear
	Thickness:	0.05 mm
	Tolerance:	+0.01/-0.02 mm
	Heat resistance:	+550 °C
	Dielectric strength:	ca. 2.5 KV

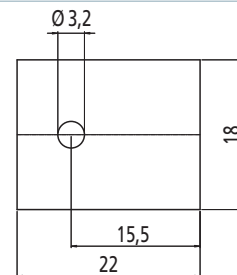
For Cases: TO 220
R_{th}: 1.25 K/W

Type GL 530



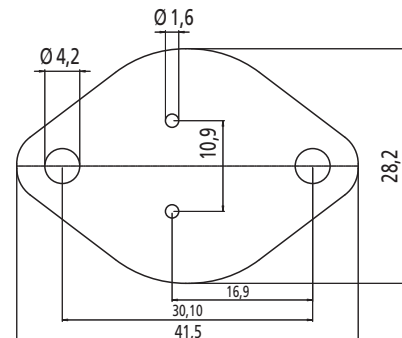
For Cases: TOP 3 (TO 218)
R_{th}: 0.8 K/W

Type GL 535



For Cases: TO 3
R_{th}: 0.3 K/W

Type GL 510



Thermal compound ensures best heat conductivity and fills up poor heat-conducting pockets of air bubbles when mounting semiconductors to heatsinks and other components.



Form:
Colour:
Basis:
Density (at 25 °C):
Operating temperature range:
Thermal conductivity:

Silicone-containing

- Type PA 700/35 g (Jar)
PA 700/250 g (Jar)
PA 700/500 g (Jar)
PA 700/500 g (Cartridge)
PA 700/5 g (Syringes)
PA 700/20 g (Syringes)

Electrically non-conductive grease
white
Silicone oil
1,7 g/cm³
-40/+ 180 °C
0,8 W/mK
Not toxic

More information available at www.alutronic.com

Silicone-free

- Type PA 701/35 g (Jar)
PA 701/250 g (Jar)
PA 701/500 g (Jar)

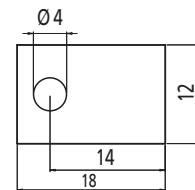
Electrically non-conductive grease
white
Synthetic oil
2,0 g/cm³
- 40 / + 150 °C
0,5 W/mK
Not toxic

Aluminium-oxide wafers facilitate insulated mounting of semiconductors within high voltage ranges. In spite of high dielectric strength, a good heat conductivity is given.

Common technical data	Colour:	white
	Dielectric strength:	ca. 10 KV/mm
	Dielectric loss tangent at 1 MHz:	10 ⁻⁴
	Dielectric loss coefficient at 1 MHz:	9.1
	Specific resistance:	10 ⁴ Ohm x cm
	Density:	3.9 g m ⁻³ Technical purity 96%
	R_{th} (TO 3):	ca. 0.5 K/W

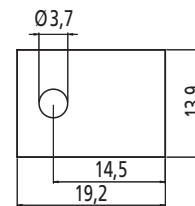
For cases: TO 220
Thickness: 1.5 mm

Type AO 479



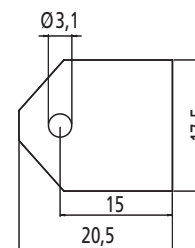
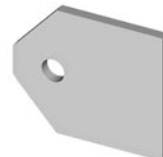
For cases: TO 220
Thickness: 1.6 mm

Type AO 475



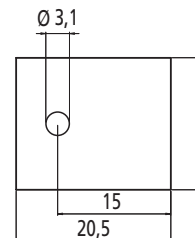
For cases: TOP 3 (TO 218)
Thickness: 1.5 mm

Type AO 471



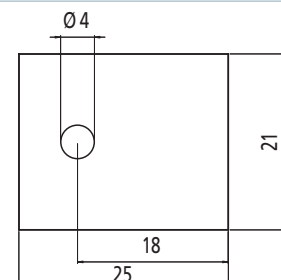
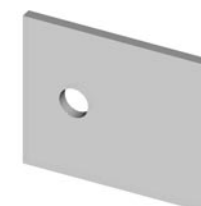
For cases: TOP 3 (TO 218)
Thickness: 1.6 mm

Type AO 472



For cases: TOP 3 (TO 218)
Thickness: 3 mm

Type AO 480/3



Insulation Material

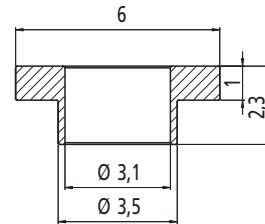
Insulation bushes – plastic materials (standard shapes)

Insulation bushes in combination with insulating wafers from mica or silicone foil facilitate insulated mounting of semiconductors to heatsinks and other components.

Combustibility: According to UL 94 VO

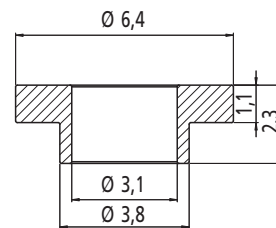
For cases: **TO 220/TOP 3 (TO 218)**

	Type IS 561	Type IS 560
Material:	SR 25	Makrolon
Compound:	Polysulfone	Polycarbonate
Dielectric strength:	16 KV/mm	30 KV/mm
Heat resistance:	200 °C	130 °C



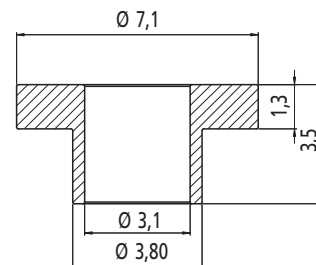
For cases: **TO 220/TOP 3 (TO 218)**

	Type IS 565
Material:	Makrolon
Compound:	Polycarbonate
Dielectric strength:	30 KV/mm
Heat resistance:	130 °C



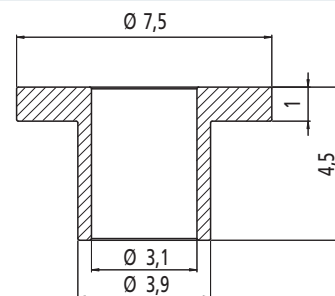
For cases: **TO 220/TOP 3 (TO 218)**

	Type IS 570
Material:	Makrolon
Compound:	Polycarbonate
Dielectric strength:	30 KV/mm
Heat resistance:	130 °C



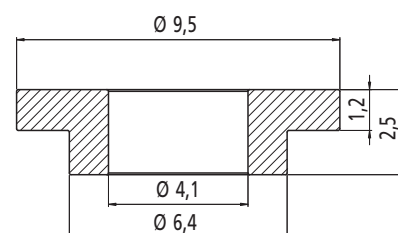
For cases: **TO 3**

	Type IS 580
Material:	Makrolon
Compound:	Polycarbonate
Dielectric strength:	30 KV/mm
Heat resistance:	130 °C



For cases: **Diodes**

	Type IS 585
Material:	Makrolon
Compound:	Polycarbonate
Dielectric strength:	30 KV/mm
Heat resistance:	130 °C

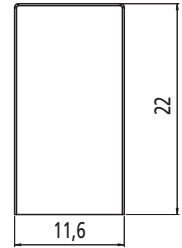
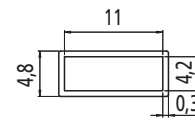


Insulation caps of insulation tubes from silicone rubber with high heat conductivity, makes the insulated mounting of semiconductors very simple, e.g. to heatsinks for clip mounting.

Common technical data	Colour:	grey
	Dielectric strength:	10 KV
	Dielectric coefficient at 10⁴ MHz:	4,4 KV
	Temperature range:	-60/180 °C
	Hardness:	75 Shore A
	Elongation:	100%
	R_{th}:	1,48 K/W

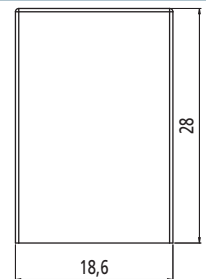
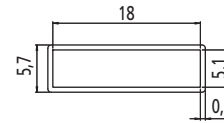
For cases: TO 220

Type IK 550



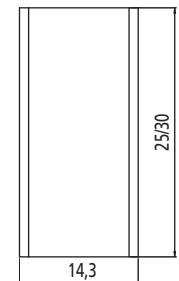
For cases: TOP 3 (TO 218)

Type IK 553



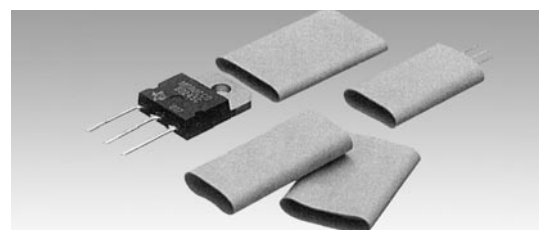
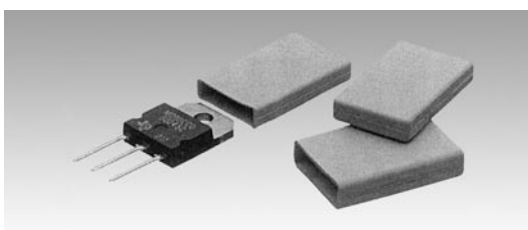
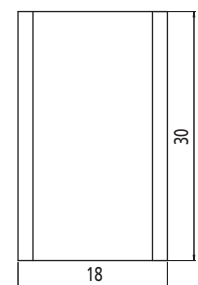
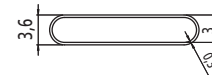
For cases: TO 220

Type IL 555/25
IL 555/30



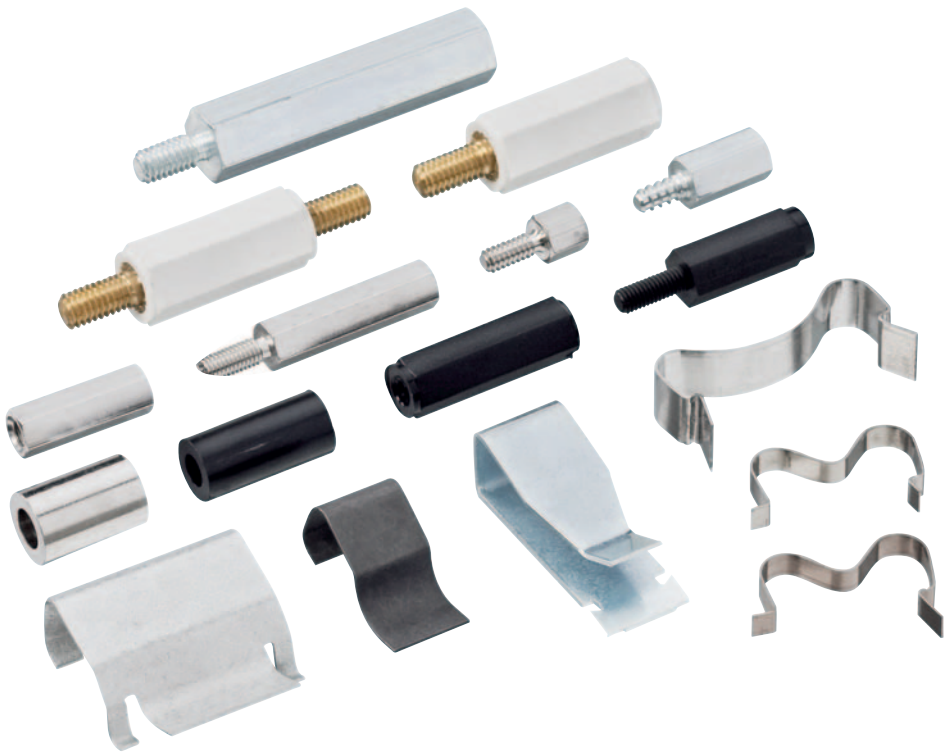
For cases: TOP 3 (TO 218)

Type IL 557/30





Chapter Content	Page
Mounting Accessories	
Mounting Clips	98 – 99
Heat-Conductive Adhesive	99
Distance Bolts from Brass, Regular and Stainless Steel and Plastic Materials	100 – 102
Distance Bolts from Plastic Materials with Brass Inserts	103
Distance Sleeves from Brass and Plastic Materials	104



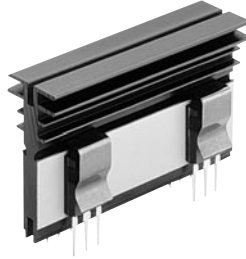
Mounting Accessories

Mounting clips

Mounting clips facilitate the safe and efficient mounting of semiconductors to heatsinks with the corresponding clip groove see page 32–34 – Special Heatsinks or page 39–41 – Standard Extruded Heatsinks.

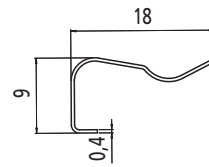
Especially for insulated mounting, a clip provides reliability by making screws and insulation bushes dispensable. Central contact pressure distributes the heat conductivity equally across the semiconductor/heatsink contact surface.

Material: Spring steel (C67)
Surface: bluing



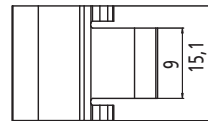
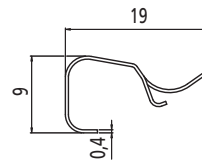
For cases: **TO 220**
 Width: 9,1 mm

Type **MC 725**



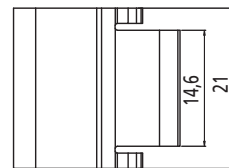
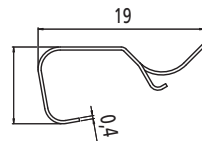
For cases: **TO 220**
 Width: 15,1 mm

Type **MC 726**



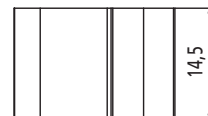
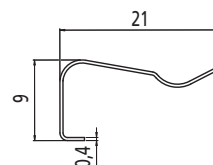
For cases: **TOP 3 (TO 218)**
 Width: 21,0 mm

Type **MC 773**



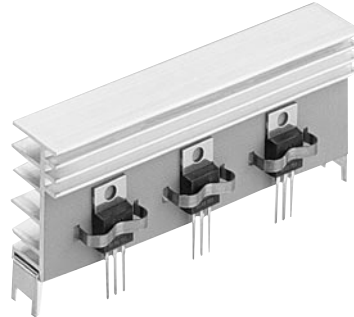
For cases: **TOP 3 (TO 218)**
 Width: 14,5 mm

Type **MC 797**



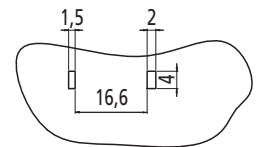
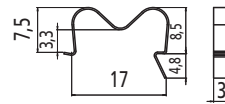
Mounting clips facilitate the safe and efficient mounting of semiconductors to heatsinks with the corresponding hole pattern. Especially for insulated mounting, a clip provides reliability by making screws and insulation bushes dispensable. Central contact pressure distributes the heat conductivity equally across the semiconductor/heatsink contact surface.

Material: Stainless steel (1.4310)



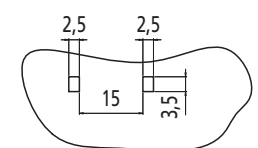
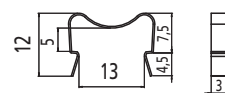
For cases: TO 220

Type MC 780



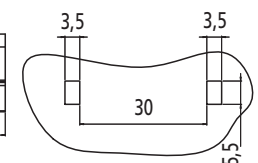
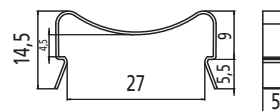
For cases: TO 220

Type MC 782



For cases: TOP 3 (TO 218)

Type MC 786



Thermal conductive single component adhesive for gluing semiconductors to heatsinks.



Type **WK 709/5 ml**
WK 709/10 ml
(Syringes)

Electrically non-conductive

Form: Liquid
Colour: green, fluoresced
Viscosity: 300–600 Pass (at 25 °C) DIN 54453
Specific density: $1,13 \times 10^3 \text{ kg/m}^3$
Flammability: $> 100 \text{ }^\circ\text{C}$
Temperature range: $< 175 \text{ }^\circ\text{C}$
Adhesive film thickness: Max. 0.1 mm
Storage life at 20 °C: 1 year
Cure system: anerobe, non-toxic

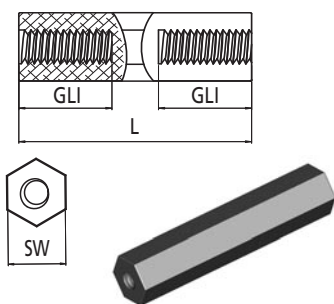
Caution: Avoid contact with eyes and skin. In case of splashes to skin, remove with warm water, soap and brush. In case of contact with eyes, wash with warm water

Mounting Accessories

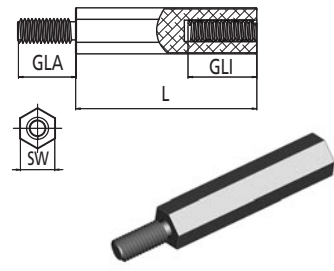
Distance bolts from brass

Material: Brass, Cu Zn 39 Pb 3, according to DIN 17660
Surface: nickel plated, G3 E, according to DIN 267
Minimum tensile strength: 430 N/mm²
Tolerance (distance dimension): +/-0,1 mm

Thread undercut: DIN 76-B

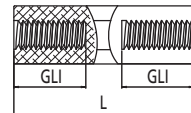
Thread: Wrench size: Standard length: Type:	M 2		M 2,5		M 3		M 3		M 4	
	SW 4		SW 5		SW 5		SW 5,5		SW 7	
	(L)	(GLI)	(L)	(GLI)	(L)	(GLI)	(L)	(GLI)	(L)	(GLI)
	DI 656/5	5*	DI 648/5	5*	DI 650/5	5*	DI 652/5	5*	DI 651/5	5*
	DI 656/8	8*	DI 648/8	8*	DI 650/8	8*	DI 652/8	8*	DI 651/8	8*
	DI 656/10	10*	DI 648/10	10*	DI 650/10	10*	DI 652/10	10*	DI 651/10	10*
	DI 656/12	6	DI 648/12	12*	DI 650/12	12*	DI 652/12	12*	DI 651/12	12*
	DI 656/15	6	DI 648/15	15*	DI 650/15	15*	DI 652/15	15*	DI 651/15	15*
	DI 656/18	6	DI 648/18	9	DI 650/18	9	DI 652/18	9	DI 651/18	9
	DI 656/20	6	DI 648/20	10	DI 650/20	10	DI 652/20	10	DI 651/20	10
	DI 656/25	6	DI 648/25	10	DI 650/25	10	DI 652/25	10	DI 651/25	10
	DI 656/30	6	DI 648/30	10	DI 650/30	10	DI 652/30	10	DI 651/30	10
	DI 656/35	6	DI 648/35	10	DI 650/35	10	DI 652/35	10	DI 651/35	10
	DI 656/40	6	DI 648/40	10	DI 650/40	10	DI 652/40	10	DI 651/40	10

* = Gewinde durchgehend

Thread: Wrench size: External thread (GLA): Standard length: Type:	M 2		M 2,5		M 3		M 3		M 4	
	SW 4		SW 5		SW 5		SW 5,5		SW 7	
	(L)	(GLI)	(L)	(GLI)	(L)	(GLI)	(L)	(GLI)	(L)	(GLI)
	DI 658/5	3	DI 649/5	3	DI 653/5	3	DI 655/5	3	DI 654/5	3
	DI 658/8	5	DI 649/8	5	DI 653/8	5	DI 655/8	5	DI 654/8	5
	DI 658/10	6	DI 649/10	6	DI 653/10	6	DI 655/10	6	DI 654/10	6
	DI 658/12	6	DI 649/12	7	DI 653/12	7	DI 655/12	7	DI 654/12	7
	DI 658/15	6	DI 649/15	10	DI 653/15	10	DI 655/15	10	DI 654/15	10
	DI 658/18	6	DI 649/18	10	DI 653/18	10	DI 655/18	10	DI 654/18	10
	DI 658/20	6	DI 649/20	10	DI 653/20	10	DI 655/20	10	DI 654/20	10
	DI 658/25	6	DI 649/25	10	DI 653/25	10	DI 655/25	10	DI 654/25	10
	DI 658/30	6	DI 649/30	10	DI 653/30	10	DI 655/30	10	DI 654/30	10
	DI 658/35	6	DI 649/35	10	DI 653/35	10	DI 655/35	10	DI 654/35	10
	DI 658/40	6	DI 649/40	10	DI 653/40	10	DI 655/40	10	DI 654/40	10

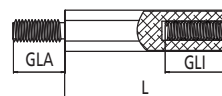
Distance Bolts from Brass for D-SUB Plug-and-socket Connection

Thread: **M 4-40 UNC***
 Wrench size: SW 5
 Standard length: (L)
 Type: **DI 660/5**
DI 660/8



* = Thread through

	outside	inside	outside	inside
Thread:	4-40 UNC	4-40 UNC	M 3	4-40 UNC
Wrench size:	7 mm	3 mm	8 mm	3 mm
Standard length:	SW 5		SW 5	
Type:	DI 661/5/1		DI 661/5/3	



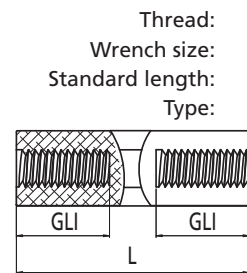
The standard lengths listed are most likely in stock.
 Special dimensions, lengths up to 100 mm and wrench sizes up to SW 13 upon request.

Material: Steel, 11 SMn PB30, according to DIN 176
Surface: zinc plated, A3 F, according to DIN 267
Minimum tensile strength: 500 N/mm²
Tolerance (distance dimension): +/-0,1 mm

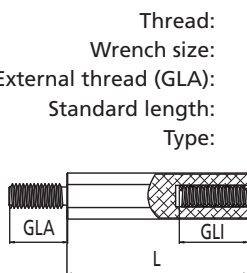
Thread undercut: DIN 76-B

Thread:	M 3		M 3		M 4		M 5		M 6	
Wrench size:	SW 5,5		SW 6		SW 8		SW 8		SW 10	
Standard length:	(L)	(GLI)	(L)	(GLI)	(L)	(GLI)	(L)	(GLI)	(L)	(GLI)
Type:	DI 642/5	5*	DI 640/5	5*	DI 641/5	5*	DI 646/8	8*	DI 657/10	10*
	DI 642/8	8*	DI 640/8	8*	DI 641/8	8*	DI 646/10	10*	DI 657/12	12*
	DI 642/10	10*	DI 640/10	10*	DI 641/10	10*	DI 646/12	12*	DI 657/15	15*
	DI 642/12	12*	DI 640/12	12*	DI 641/12	12*	DI 646/15	15*	DI 657/18	9
	DI 642/15	15*	DI 640/15	15*	DI 641/15	15*	DI 646/18	9	DI 657/20	10
	DI 642/18	9	DI 640/18	9	DI 641/18	9	DI 646/20	10	DI 657/25	10
	DI 642/20	10	DI 640/20	10	DI 641/20	10	DI 646/25	10	DI 657/30	12
	DI 642/25	10	DI 640/25	10	DI 641/25	10	DI 646/30	10	DI 657/35	12
	DI 642/30	10	DI 640/30	10	DI 641/30	10	DI 646/35	10	DI 657/40	12
	DI 642/35	10	DI 640/35	10	DI 641/35	10	DI 646/40	10		
	DI 642/40	10	DI 640/40	10	DI 641/40	10				

* = Gewinde durchgehend



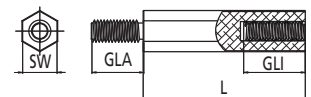
Thread:	M 3		M 3		M 4		M 5		M 6	
Wrench size:	SW 5,5		SW 6		SW 8		SW 8		SW 10	
External thread (GLA):	6 mm		6 mm		8 mm		8 mm		10 mm	
Standard length:	(L)	(GLI)	(L)	(GLI)	(L)	(GLI)	(L)	(GLI)	(L)	(GLI)
Type:	DI 645/5	3	DI 643/5	3	DI 644/5	3	DI 647/8	5	DI 659/10	6
	DI 645/8	5	DI 643/8	5	DI 644/8	5	DI 647/10	6	DI 659/12	7
	DI 645/10	6	DI 643/10	6	DI 644/10	6	DI 647/12	7	DI 659/15	10
	DI 645/12	7	DI 643/12	7	DI 644/12	7	DI 647/15	10	DI 659/18	10
	DI 645/15	10	DI 643/15	10	DI 644/15	10	DI 647/18	10	DI 659/20	12
	DI 645/18	10	DI 643/18	10	DI 644/18	10	DI 647/20	10	DI 659/25	12
	DI 645/20	10	DI 643/20	10	DI 644/20	10	DI 647/25	10	DI 659/30	12
	DI 645/25	10	DI 643/25	10	DI 644/25	10	DI 647/30	10	DI 659/35	12
	DI 645/30	10	DI 643/30	10	DI 644/30	10	DI 647/35	10	DI 659/40	12
	DI 645/35	10	DI 643/35	10	DI 644/35	10	DI 647/40	10		
	DI 645/40	10	DI 643/40	10	DI 644/40	10				



Distance Bolts from Steel

with self-cutting external thread e.g. for tapping holes in steel plate or aluminium

Internal thread: M 3
Wrench size: SW 5,5
External thread: ST 3,3
GLA: 6 mm
D1/mm: (L) (GLI)
D2/mm: DI 690/8 5
Standard length: DI 690/10 6
Type: DI 690/12 7
 DI 690/15 10
 DI 690/20 10



The standard lengths listed are most likely in stock.

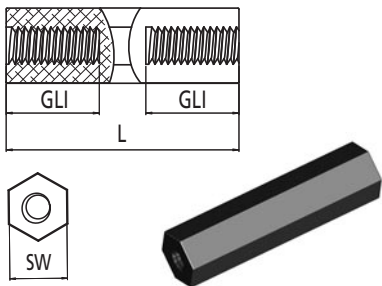
Special dimensions, lengths up to 100 mm and wrench sizes up to SW 13 upon request.

Mounting Accessories

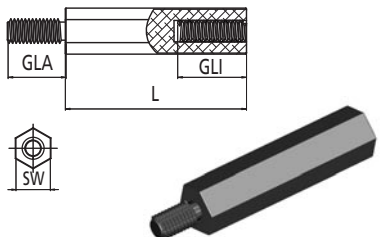
Distance bolts from stainless steel and plastic

Material: Stainless steel, X8CrNiS18-9, according to EN 10088
Minimum tensile strength: 750 N/mm²
Tolerance (distance dimension): +/-0,1 mm

Thread undercut: DIN 76-B


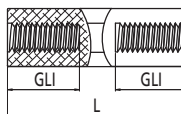


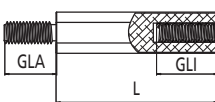
Thread: Wrench size: Standard length: Type:	M 3		M 4		M 5		M 6	
	SW 5,5		SW 7		SW 8		SW 10	
	(L)	(GLI)	(L)	(GLI)	(L)	(GLI)	(L)	(GLI)
	DI 670/5	5*	DI 671/5	5*	DI 672/8	8*	DI 673/10	10*
	DI 670/8	8*	DI 671/8	8*	DI 672/10	10*	DI 673/12	12*
	DI 670/10	10*	DI 671/10	10*	DI 672/12	12*	DI 673/15	15*
	DI 670/12	12*	DI 671/12	12*	DI 672/15	15*	DI 673/18	9
	DI 670/15	7	DI 671/15	15*	DI 672/18	9	DI 673/20	10
	DI 670/18	7	DI 671/18	9	DI 672/20	10	DI 673/25	12
	DI 670/20	7	DI 671/20	9	DI 672/25	10	DI 673/30	12
	DI 670/25	7	DI 671/25	9	DI 672/30	10	DI 673/35	12
	DI 670/30	7	DI 671/30	9	DI 672/35	10	DI 673/40	12
	DI 670/35	7	DI 671/35	9	DI 672/40	10		
	DI 670/40	7	DI 671/40	9				

* = Gewinde durchgehend

Thread: Wrench size: External thread (GLA): Standard length: Type:	M 3		M 4		M 5		M 6	
	SW 5,5		SW 7		SW 8		SW 10	
	(L)	(GLI)	(L)	(GLI)	(L)	(GLI)	(L)	(GLI)
	DI 674/5	2,5	DI 675/8	5	DI 676/10	6	DI 677/10	6
	DI 674/8	5	DI 675/10	6	DI 676/12	8	DI 677/12	8
	DI 674/10	6	DI 675/12	8	DI 676/15	10	DI 677/15	10
	DI 674/12	7	DI 675/15	9	DI 676/18	10	DI 677/18	12
	DI 674/15	7	DI 675/18	9	DI 676/20	10	DI 677/20	12
	DI 674/18	7	DI 675/20	9	DI 676/25	10	DI 677/25	12
	DI 674/20	7	DI 675/25	9	DI 676/30	10	DI 677/30	12
	DI 674/25	7	DI 675/30	9	DI 676/35	10	DI 677/35	12
	DI 674/30	7	DI 675/35	9	DI 676/40	10	DI 677/40	12
	DI 674/35	7	DI 675/40	9				
	DI 674/40	7						

Distance Bolts from Plastic Material

Material: Durethan, Compound Polyamide 6
Dielectric strength: 40 KV/mm
Specific electr. contact resistance: > 10¹⁶ Ohm/cm
Heat resistance: 110 °C
Colour: black

Thread: Wrench size: Standard length: Type:	M 3		M 4			
	SW 6		SW 8			
	(L)	(GLI)	(L)	(GLI)		
	DI 636/10	10*	DI 639/10	10*		
	DI 636/15	15*	DI 639/15	15*		
	DI 636/20	10	DI 639/20	10		
	DI 636/25	10	DI 639/25	10		

* = Thread through

Thread: Wrench size: Standard length: Type:	M 3			
	SW 6			
	(L)	(GLI)		
	DI 638/10	7		
	DI 638/15	10		

The standard lengths listed are most likely in stock.

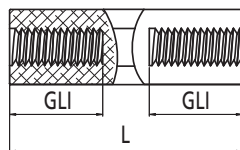
Special dimensions, lengths up to 100 mm and wrench sizes up to SW 13 upon request.

Mounting Accessories

Distance bolts from plastic material with brass thread inserts

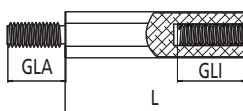
Material:	Polyamide 6.6 white/Brass, nickel plated
Heat resistance:	110 °C
Flammability:	UL 94-V2
Resistance:	10 ¹² Ohm/cm
Dielectric strength:	50 KV/mm
Tolerance (distance dimension):	+/-0,1 mm

Thread:
Wrench size:
Internal thread (GLI)
Standard length:
Type:



M 2,5	M 3	M 4	M 5
SW 6	SW 6	SW 8	SW 10
6 mm	6 mm	6 mm	6 mm
(L)	(L)	(L)	(L)
DI 678/15	DI 679/15	DI 680/15	DI 681/15
DI 678/20	DI 679/20	DI 680/20	DI 681/20
DI 678/25	DI 679/25	DI 680/25	DI 681/25
DI 678/30	DI 679/30	DI 680/30	DI 681/30
DI 678/35	DI 679/35	DI 680/35	DI 681/35
DI 678/40	DI 679/40	DI 680/40	DI 681/40

Thread:
Wrench size:
Internal thread (GLI)
Standard length:
Type:



M 2,5	M 3	M 4	M 5
SW 6	SW 6	SW 8	SW 10
6 mm	6 mm	6 mm	6 mm
(L) (GLA)	(L) (GLA)	(L) (GLA)	(L) (GLA)
DI 682/15 6	DI 683/15 6	DI 684/15 8	DI 685/15 10
DI 682/20 6	DI 683/20 6	DI 684/20 8	DI 685/20 10
DI 682/25 6	DI 683/25 6	DI 684/25 8	DI 685/25 10
DI 682/30 6	DI 683/30 6	DI 684/30 8	DI 685/30 10
DI 682/35 6	DI 683/35 6	DI 684/35 8	DI 685/35 10
DI 682/40 6	DI 683/40 6	DI 684/40 8	DI 685/40 10

Thread:
Wrench size:
External thread (GLA)
Standard length:
Type:



M 2,5	M 3	M 4	M 5
SW 6	SW 6	SW 8	SW 10
6 mm	6 mm	8 mm	10 mm
(L)	(L)	(L)	(L)
DI 686/15	DI 687/15	DI 688/15	DI 689/15
DI 686/20	DI 687/20	DI 688/20	DI 689/20
DI 686/25	DI 687/25	DI 688/25	DI 689/25
DI 686/30	DI 687/30	DI 688/30	DI 689/30
DI 686/35	DI 687/35	DI 688/35	DI 689/35
DI 686/40	DI 687/40	DI 688/40	DI 689/40

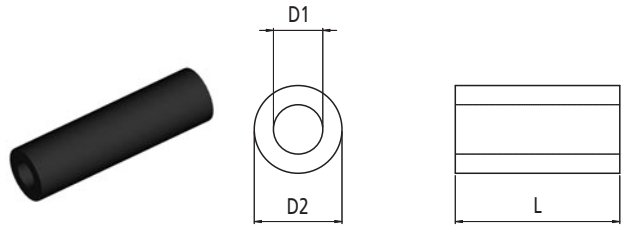
The standard lengths listed are most likely in stock.

Mounting Accessories

Distance sleeves from plastic material and brass

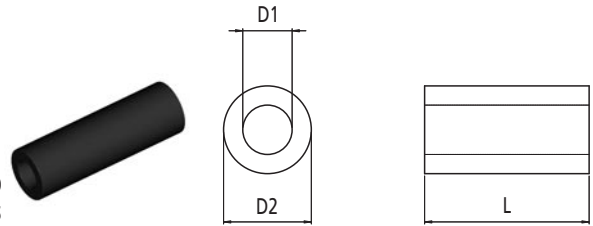
Material: Polystyrene
Compound: Polystyrene
Dielectric strength: 90 KV/mm
Specific electr. contact resistance: > 10¹⁶ Ohm/cm
Heat resistance: 70 °C
Colour: black

Ø Inside (D1):	3,6 mm	4,5 mm
Ø Outside (D2):	7 mm	8 mm
Standard length:	(L)	(L)
Type:	DI 600/5 DI 600/10 DI 600/15 DI 600/20	DI 610/5 DI 610/10 DI 610/15 DI 610/20



Material: Makrolon
Compound: Makrolon
Dielectric strength: 90 KV/mm
Specific electr. contact resistance: > 10¹⁶ Ohm/cm
Heat resistance: 135 °C
Colour: grey

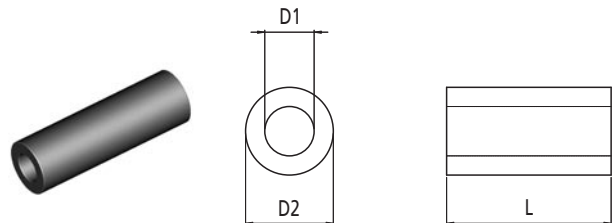
Ø Inside (D1):	3,6 mm	4,5 mm	5,5 mm
Ø Outside (D2):	7 mm	8 mm	10 mm
Standard length:	(L)	(L)	(L)
Type:	DI 601/5 DI 601/10 DI 601/15 DI 601/20	DI 611/5 DI 611/10 DI 611/15 DI 611/20	DI 616/5 DI 616/10 DI 616/15 DI 616/20



Distance Sleeves from Brass

Material: Brass, Cu Zn 39 Pb 3, according to DIN 17660
Surface: nickel plated, G3 E, according to DIN 267
Tolerance (distance dimension): +/-0,1 mm

Ø Inside (D1):	3,2 mm	4,3 mm
Ø Outside (D2):	6 mm	8 mm
Standard length:	(L)	(L)
Type:	DI 617/3 DI 617/4 DI 617/5 DI 617/6 DI 617/7 DI 617/8 DI 617/9 DI 617/10 DI 617/11 DI 617/12 DI 617/15	DI 618/5 DI 618/6 DI 618/7 DI 618/8 DI 618/10 DI 618/12 DI 618/15



The standard lengths listed are most likely in stock.

X-ON Electronics

Largest Supplier of Electrical and Electronic Components

Click to view similar products for [Gate Drivers](#) category:

Click to view products by [Alutronic](#) manufacturer:

Other Similar products are found below :

[00028](#) [00053P0231](#) [8967380000](#) [56956](#) [CR7E-30DB-3.96E\(72\)](#) [57.404.7355.5](#) [LT4936](#) [57.904.0755.0](#) [5801-0903](#) [5803-0901](#) [5811-0902](#)
[5813-0901](#) [58410](#) [00576P0030](#) [00581P0070](#) [5882900001](#) [00103P0020](#) [00600P0005](#) [00-9050-LRPP](#) [00-9090-RDPP](#) [5951900000](#) [01-](#)
[1003W-10/32-15](#) [LTI LA6E-1S-WH-RC-FN12VXCR1](#) [0131700000](#) [00-2240](#) [LTP70N06](#) [LVP640](#) [0158-624-00](#) [5J0-1000LG-SIL](#) [020017-13](#)
[LY1D-2-5S-AC120](#) [LY2-0-US-AC120](#) [LY2-US-AC240](#) [LY3-UA-DC24](#) [00-5150](#) [00576P0020](#) [00600P0010](#) [LZNQ2M-US-DC5](#) [LZNQ2-](#)
[US-DC12](#) [LZP40N10](#) [00-8196-RDPP](#) [00-8274-RDPP](#) [00-8275-RDNP](#) [00-8609-RDPP](#) [00-8722-RDPP](#) [00-8728-WHPP](#) [00-8869-RDPP](#) [00-](#)
[9051-RDPP](#) [00-9091-LRPP](#) [00-9291-RDPP](#)