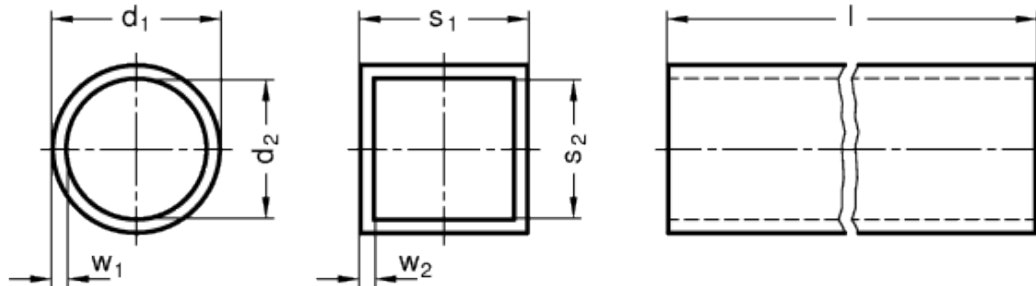
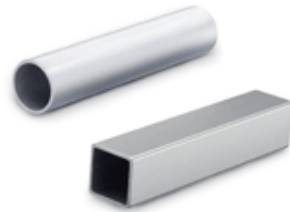


# GN 990

Connecting tubes



## technical informations

### Material

- Steel ST, zinc-plated ZB, blue passivated.
- Aluminium AL, blank BL, untreated.
- Aluminium AL, anodised EL, natural colour.

### Features and applications

Construction tubings GN 990 can be supplied in any length up to 3000 mm.

The tolerances specified for the outside diameter of the round construction tubings comply with the requirements for split mono-block connector clamps. Otherwise the tolerances comply with DIN 2391, DIN 2395 and DIN 2462.

Two-piece connector clamps allow obviously larger tolerances on round and square construction tubings.

### Accessories

- Tube end plugs GN 991.
- Insert bushes GN 992.

Standard Elements	Main dimensions							Weight
Description	$d_1$	$s_1$	$l_{\pm 0,5}$	$d_2$	$s_2$	$w_1$	$w_2$	g
GN 990-ST-D10-100-ZB	D 10 $\pm 0,1$	-	100	7	-	1.5	-	31
GN 990-ST-D12-100-ZB	D 12 $\pm 0,1$	-	100	9	-	1.5	-	40
GN 990-ST-D14-100-ZB	D 14 $\pm 0,1$	-	100	11	-	1.5	-	46
GN 990-ST-D15-100-ZB	D 15 $\pm 0,1$	-	100	12	-	1.5	-	52
GN 990-ST-D16-100-ZB	D 16 $\pm 0,1$	-	100	13	-	1.5	-	54
GN 990-ST-D18-100-ZB	D 18 $\pm 0,1$	-	100	15	-	1.5	-	61
GN 990-ST-D20-100-ZB	D 20 $\pm 0,1$	-	100	16	-	2	-	89
GN 990-ST-D25-100-ZB	D 25 $\pm 0,1$	-	100	21	-	2	-	113
GN 990-ST-D30-100-ZB	D 30 $\pm 0,1$	-	100	26	-	2	-	138
GN 990-ST-D32-100-ZB	D 32 $\pm 0,15$	-	100	28	-	2	-	148
GN 990-ST-D35-100-ZB	D 35 $\pm 0,15$	-	100	31	-	2	-	163
GN 990-ST-D40-100-ZB	D 40 $\pm 0,15$	-	100	34	-	3	-	274
GN 990-ST-D42-100-ZB	D 42 $\pm 0,2$	-	100	36	-	3	-	288
GN 990-ST-D45-100-ZB	D 45 $\pm 0,2$	-	100	39	-	3	-	312
GN 990-ST-D48-100-ZB	D 48 $\pm 0,2$	-	100	42	-	3	-	334
GN 990-ST-D50-100-ZB	D 50 $\pm 0,2$	-	100	44	-	3	-	348
GN 990-ST-D55-100-ZB	D 55 $\pm 0,25$	-	100	47	-	4	-	506
GN 990-ST-D60-100-ZB	D 60 $\pm 0,25$	-	100	52	-	4	-	550
GN 990-ST-V20-100-ZB	-	V 20	100	-	16	-	2	112
GN 990-ST-V25-100-ZB	-	V 25	100	-	21	-	2	144
GN 990-ST-V30-100-ZB	-	V 30	100	-	26	-	2	175
GN 990-ST-V35-100-ZB	-	V 35	100	-	31	-	2	206
GN 990-ST-V40-100-ZB	-	V 40	100	-	34	-	3	333
GN 990-ST-V45-100-ZB	-	V 45	100	-	39	-	3	380
GN 990-ST-V50-100-ZB	-	V 50	100	-	44	-	3	428
GN 990-AL-D10-100-*	D 10 $\pm 0,1$	-	100	7	-	1.5	-	11
GN 990-AL-D12-100-*	D 12 $\pm 0,1$	-	100	9	-	1.5	-	14
GN 990-AL-D14-100-*	D 14 $\pm 0,1$	-	100	11	-	1.5	-	16
GN 990-AL-D15-100-*	D 15 $\pm 0,1$	-	100	12	-	1.5	-	18
GN 990-AL-D16-100-*	D 16 $\pm 0,1$	-	100	13	-	1.5	-	18
GN 990-AL-D18-100-*	D 18 $\pm 0,1$	-	100	15	-	1.5	-	21
GN 990-AL-D20-100-*	D 20 $\pm 0,1$	-	100	16	-	2	-	31
GN 990-AL-D25-100-*	D 25 $\pm 0,1$	-	100	21	-	2	-	39
GN 990-AL-D30-100-*	D 30 $\pm 0,1$	-	100	26	-	2	-	48
GN 990-AL-D32-100-*	D 32 $\pm 0,15$	-	100	28	-	2	-	51
GN 990-AL-D35-100-*	D 35 $\pm 0,15$	-	100	31	-	2	-	56

GN 990-AL-D40-100-*	D 40 $\pm 0,15$	-	100	34	-	3	-	94
GN 990-AL-D42-100-*	D 42 $\pm 0,2$	-	100	36	-	3	-	99
GN 990-AL-D45-100-*	D 45 $\pm 0,2$	-	100	39	-	3	-	107
GN 990-AL-D48-100-*	D 48 $\pm 0,2$	-	100	42	-	3	-	115
GN 990-AL-D50-100-*	D 50 $\pm 0,2$	-	100	44	-	3	-	120
GN 990-AL-D60-100-*	D 60 $\pm 0,25$	-	100	52	-	4	-	188
GN 990-AL-V10-100-*	-	V 10	100	-	7	-	1.5	10
GN 990-AL-V12-100-*	-	V 12	100	-	9	-	1.5	12
GN 990-AL-V16-100-*	-	V 16	100	-	13	-	1.5	16
GN 990-AL-V20-100-*	-	V 20	100	-	16	-	2	39
GN 990-AL-V25-100-*	-	V 25	100	-	21	-	2	50
GN 990-AL-V30-100-*	-	V 30	100	-	26	-	2	61
GN 990-AL-V35-100-*	-	V 35	100	-	31	-	2	71
GN 990-AL-V40-100-*	-	V 40	100	-	34	-	3	120
GN 990-AL-V45-100-*	-	V 45	100	-	39	-	3	136
GN 990-AL-V50-100-*	-	V 50	100	-	44	-	3	152

\* Complete the description of the standard item needed by adding the finish of the aluminium construction tubings: blank (BL) or anodized (EL).



STANDARD MACHINE ELEMENTS WORLDWIDE

## X-ON Electronics

Largest Supplier of Electrical and Electronic Components

*Click to view similar products for [Electrical Enclosure Accessories](#) category:*

*Click to view products by [Elesa & Ganter](#) manufacturer:*

Other Similar products are found below :

[60121-06-028 C-325 Black](#) [71884-04-028 CM3-100 Black](#) [71884-18-028 LH43-200 Black](#) [71884-24-028 LH75-200 Black](#) [71885-01-028 CM6-150 Black](#) [72459-02-028 DM-3 BLACK](#) [81501-01-000 XPL, 9VB Black](#) [82402-01 PT-8 ALUM](#) [1335GSKT3](#) [14101FP-PK](#) [CB-1263-BT](#) [1611512-4](#) [HB-11498](#) [RC-7775](#) [HM BLACK PANEL](#) [61033-01-000](#) [115123-01-508 CN-RL RS](#) [115124-01-508 CN-XRL XRS](#) [115119-01-000 CN-RL RS](#) [115123-01-000 CN-RL RS](#) [60121-04-028 C-275 Black](#) [60128-01-072](#) [60222-01-028 CM6-225 Black](#) [60272-01-028 CM3-150 Black](#) [60851-01-028 CM69-120 Black](#) [62291-502-000-KEU-10-BLK](#) [62452-01-000 HML-9VB, EB Black](#) [71884-25-028 LH89-130 Black](#) [AXX2POSTBRCKT](#) [FUPMESK](#) [71884-23-028 LH75-130 Black](#) [1317GSKTSC](#) [8G813V40389](#) [DVA.1-10-15-M4-10-70](#) [DVC.1-60-49-60-M10-28-55](#) [DVC.1-15-8,5-15-M4-10-40](#) [DVC.1-20-12-30-M6-18-40](#) [DVC.1-30-18-25-M8-20-40](#) [DVC.1-35-31-15-M8-20-40](#) [DVC.1-35-31-15-M8-20-70](#) [DVC.1-75-60-40-M12-37-70](#) [DVC.2-30-22-20-M8-20-55](#) [DVC.2-40-30-25-M8-23-55](#) [DVC.2-75-60-40-M12-37-55](#) [DVC.2-21-16-22-M6-18-40](#) [DVC.2-40-20-48-M8-23-40](#) [DVC.2-40-32-50-M8-23-40](#) [DVC.2-20-14-19-M6-18-70](#) [DVC.2-25-18-20-M6-18-70](#) [DVC.3-20-14-20-M6-40](#) [DVC.3-20-14-30-M6-40](#)