

### Features

- High Power
- Low Insertion Loss
- High Attenuation

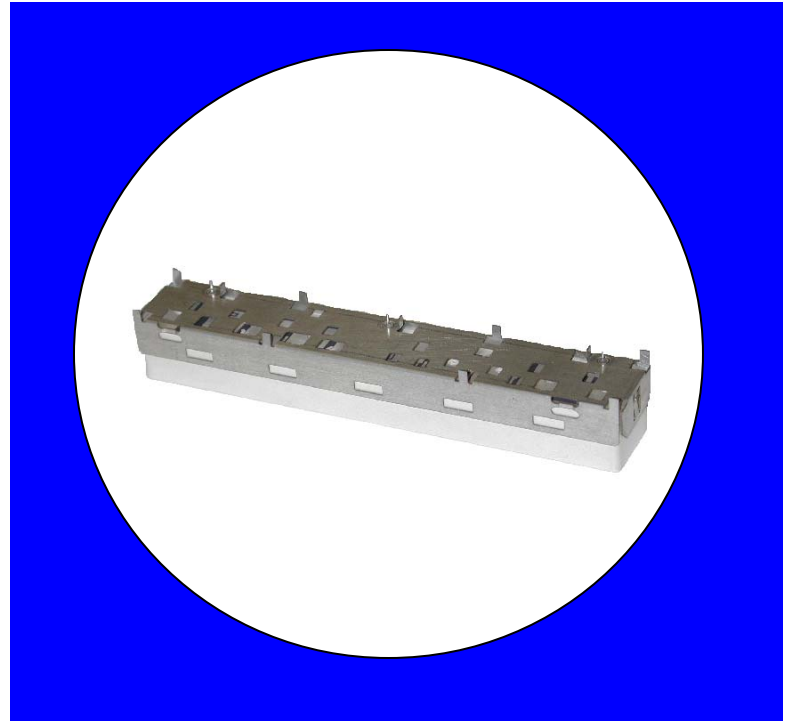
### Description

Surface mount, silver (Ag) coated ceramic duplexer for use in EGSM applications.

Weight: 192 grams typical

Material: Filter is composed of a ceramic block plated with Ag and a Bracket made of nickel silver plated steel.

Filter complies with RoHS standards.



### Electrical Specifications

Parameter	Frequency MHz	Typical @ 25°C	Spec over -40°C to +85°C
<b>Low Band Response</b>			
Passband lloss	880 - 915	-1.50	-2.10
Passband Ripple	880 - 915	0.90	1.40
Passband Return Loss @ Low Band	880 - 915	-14.00	-12.00
Passband Return Loss @ Ant	880 - 915	-14.00	-12.00
Attenuation	925 - 960	-48.00	-44.00
<b>High Band Response</b>			
Passband lloss	925 - 960	-1.70	-2.30
Passband Ripple	925 - 960	1.00	1.50
Passband Return Loss @ High Band	925 - 960	-13.00	-11.00
Passband Return Loss @ Ant	925 - 960	-13.00	-11.00
Attenuation	880 - 915	-44.00	-40.00
<b>Isolation</b>			
Rejection @ Low Band	880 - 915	-44.00	-40.00
Rejection @ High Band	925 - 960	-48.00	-44.00
Average Power Antenna to High Band port		20 Watt	
Peak Power Antenna to High Band Port		200 Watt	

Note: Supplier shall test each filter to the critical electrical specifications of the above table. Any subsequent audits may deviate from in value due to measurement repeatability among different test systems. Power test will be completed with 50 watts average power in 5 MHz steps across the band. 12 steps total with a 100 millisecond pulse at each frequency point and a 200 watt peak, 1% duty factor with a 9 microsecond pulse. Such deviations shall not exceed the following limits:

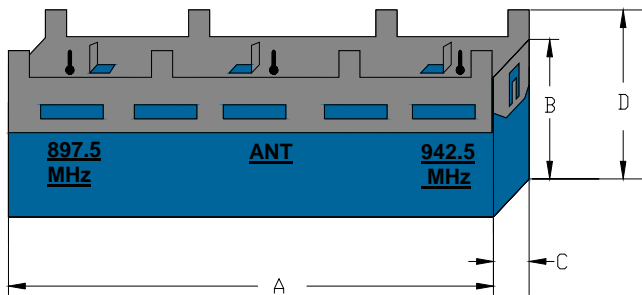
Specification	Allowance
Insertion Loss	0.1 dB
Return Loss	1.0 dB
Stop bands	1.0 d

\*This product is covered by one or more of the following U.S. and foreign patents including: US 4,692,726;US 4,742,562; US 4,800,348;US 4,829,274;US 5,146,193;EP 0573597;DE 0573597;FR 0573597;JP 508149/92;KR 142171;US 5,162,760;US 5,218,329;US 5,250,916;US 5,327,109;US 5,488,335;CA 2114029;FR 9306297;GB 2273393;JP 3205337;KR 115113;CN 93106228.4;US 5,512,866;EP 0706719;DE 0706719;FR 0706719;GB 0706719;CN 95190359.4;US 5,602,518;US 5,721,520;US 5,745,018;EP 0910875;DE 0910875;DK 0910875;FR 0910875;GB 0910875;IE 0910875;JP 505182/98;KR 10-323013;US 5,994,978;US 6,462,629;CN 00810420.4;US 6,559,735;US 6,650,202;US 6,834,429. Other US and foreign patents pending.

\*CTS Corporation 2006 reserves all copyrights in the layout, design and configuration of the patterns on this product.\*

## Mechanical Drawing

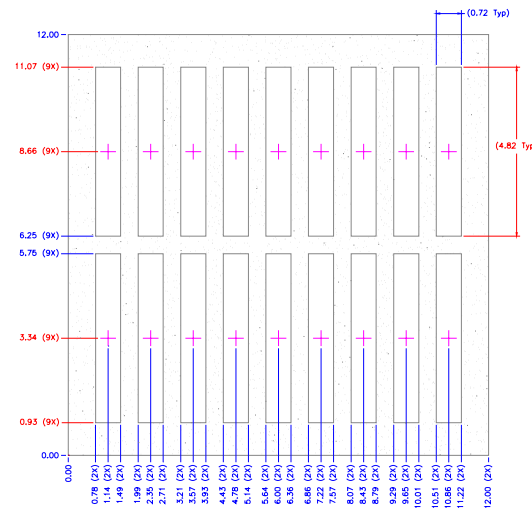
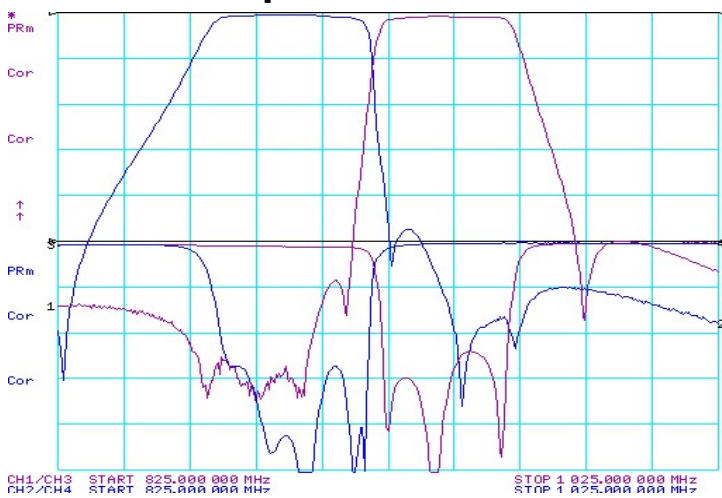
Revision B – Origin Date: October 21, 2008 – Revision Date: July 11, 2011



Dim	Nominal (mm)	Tolerance (mm) +/- or max
A	133.1	0.5
B	23	max
C	19.9	0.25
D	25.4	max

## Packaging

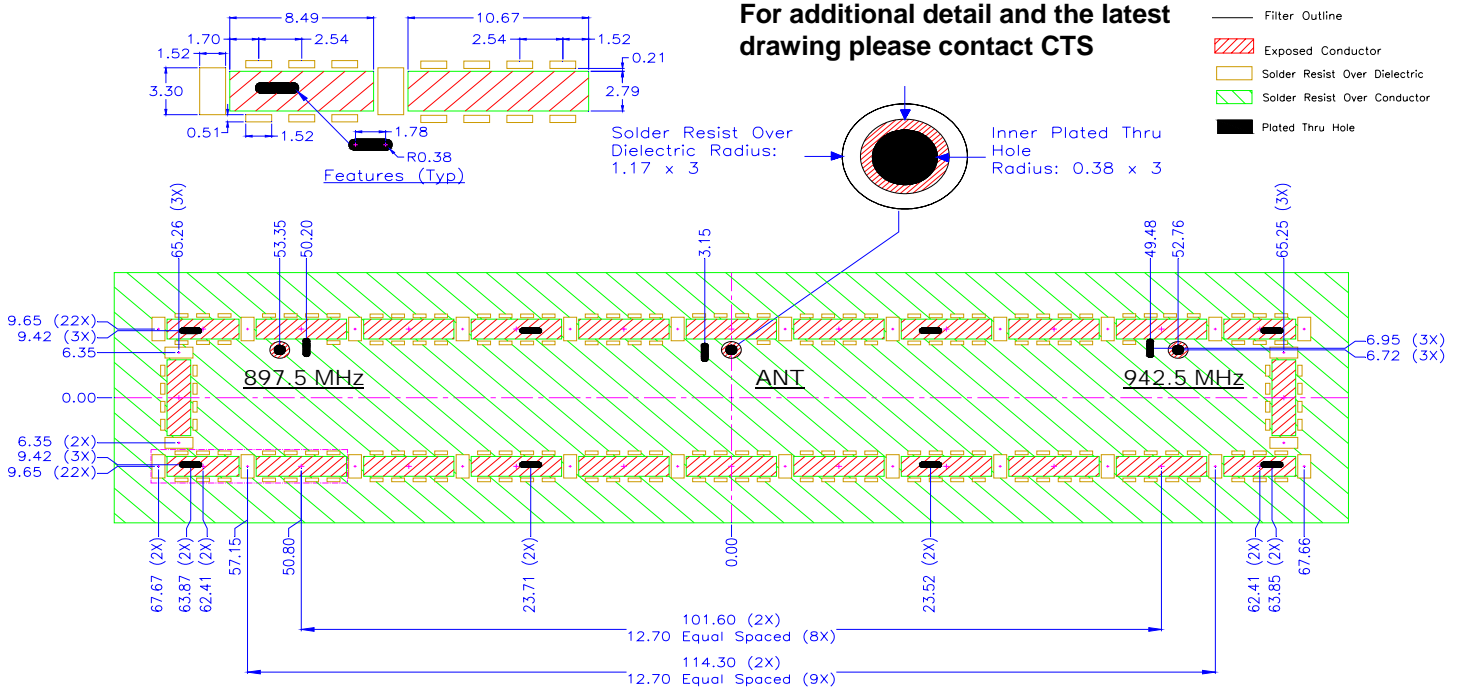
## Electrical response



## PCB Layout

For additional detail and the latest drawing please contact CTS

- Filter Outline
- ▨ Exposed Conductor
- ▨ Solder Resist Over Dielectric
- ▨ Solder Resist Over Conductor
- Plated Thru Hole



## X-ON Electronics

Largest Supplier of Electrical and Electronic Components

*Click to view similar products for [Signal Conditioning category](#):*

*Click to view products by [CTS manufacturer](#):*

Other Similar products are found below :

[MAPDCC0004](#) [PD0409J5050S2HF](#) [880157](#) [HHS-109-PIN](#) [DC1417J5005AHF](#) [DC4859J5005AHF](#) [AFS14A30-2185.00-T3](#) [AFS14A35-1591.50-T3](#) [DS-323-PIN](#) [DSS-313-PIN](#) [B39321R801H210](#) [B39321R821H210](#) [B39921B4317P810](#) [1A0220-3](#) [2089-6207-00](#) [JP510S](#) [LFB212G45SG8C341](#) [LFB322G45SN1A504](#) [LFL182G45TC3B746](#) [SF2159E](#) [30057](#) [1P510S](#) [CER0813B](#) [3A325](#) [40287](#) [41180](#) [ATB3225-75032NCT](#) [B69842N5807A150](#) [BD0810N50100AHF](#) [BD2326L50200AHF](#) [BD2425J50200AHF](#) [HMC189AMS8TR](#) [C5060J5003AHF](#) [JHS-114-PIN](#) [JP503AS](#) [DC0710J5005AHF](#) [DC2327J5005AHF](#) [DC3338J5005AHF](#) [43020](#) [LFB2H2G60BB1C106](#) [LFL15869MTC1B787](#) [X3C19F1-20S](#) [XC3500P-20S](#) [10013-20](#) [SF2081E](#) [SF2194E](#) [SF2238E](#) [CDBLB455KCAX39-B0](#) [RF1353C](#) [PD0922J5050D2HF](#)