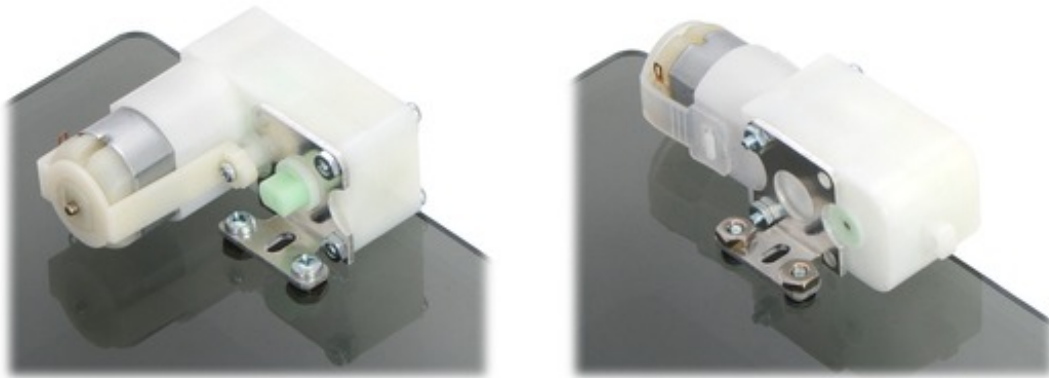




## Pololu Stamped Aluminum L-Bracket Pair for Plastic Gearmotors

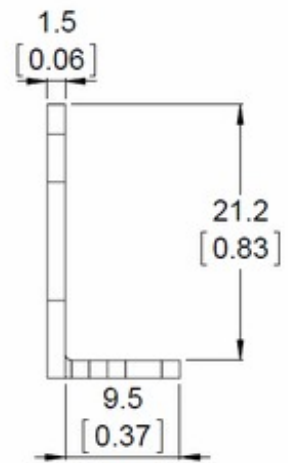
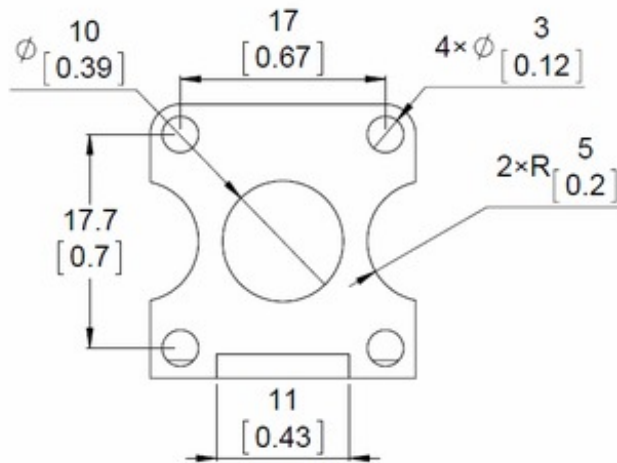
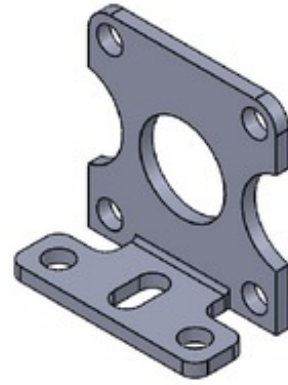
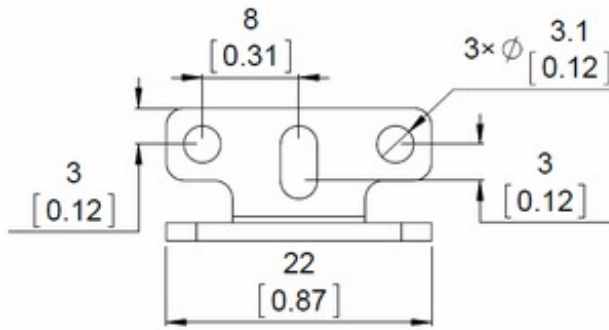
These light-weight brackets (approximately 2 g each) are specifically designed for our larger Pololu plastic gearmotors (228:1 offset, 120:1 offset, 200:1 90-degree, and 120:1 90-degree). Each bracket features two mounting holes and one mounting slot intended for #4-size screws (not included). We also offer an extended version of this bracket that allows for even more mounting options and might work better for particular applications.

A total of four 1" long #2-56 screws, for use with the 228:1 offset and 120:1 offset plastic gearmotors, and four 0.75" long #2-56 screws, for use with the 200:1 90-degree and 120:1 90-degree plastic gearmotors, are included. Two #2-56 hex nuts are also included for each bracket. Only two screws are used to mount a motor to each bracket, as shown in the pictures below:



These brackets also work with the Solarbotics plastic gearmotors (GM2, GM3, GM8, and GM9), although different length mounting screws might be required.

The following drawing shows the bracket dimensions in mm.



Mechanical drawing for the Pololu stamped aluminum L-bracket for plastic gearmotors. Units are mm over [inches].

This drawing is also available as a downloadable PDF (125k pdf).

[Documentation on producer website.](#)

## X-ON Electronics

Largest Supplier of Electrical and Electronic Components

*Click to view similar products for [Accessories for Micromotors](#) category:*

*Click to view products by [Pololu](#) manufacturer:*

Other Similar products are found below :

[ROMI CHASSIS MOTOR CLIP PAIR - WHITE](#) [ROMI CHASSIS MOTOR CLIP PAIR - YELLOW](#) [ROMI ENCODER PAIR KIT 12 CPR 3.5-18V](#) [MICRO METAL GEARMOTOR BRACKET PAIR - WHI](#) [STAMPED ALUMINUM L-BRACKET PAIR FOR 37D](#) [POLOLU-2590](#) [FIT0033](#) [FIT0038](#) [FIT0039](#) [FIT0040](#) [FIT0160](#) [FIT0415](#) [SEN0116](#) [EMX-AC-0092](#) [EMX-AC-0093](#) [EMX-AC-0095](#) [EMX-AC-0096](#) [EMX-AC-1205](#) [EMX-AC-1207](#) [EMX-AC-1208](#) [EMX-AC-1209](#) [EMX-AC-1210](#) [EMX-AC-1211](#) [EMX-AC-1215](#) [EMX-AC-1221](#) [EMX-AC-1226](#) [EMX-AC-1230](#) [EMX-AC-1231](#) [EMX-AC-1235](#) [EMX-AC-1251](#) [EMX-AC-1256](#) [EMX-AC-0308](#) [EMX-AC-0319](#) [EMX-AC-0315](#) [EMX-AC-0387](#) [EMX-AC-0388](#) [EMX-AC-0389](#) [EMX-AC-0390](#) [EMX-AC-0391](#) [EMX-AC-0392](#) [EMX-AC-0393](#) [EMX-AC-0394](#) [EMX-AC-0395](#) [EMX-AC-0396](#) [EMX-AC-0397](#) [EMX-AC-0318](#) [EMX-AC-0309](#) [EMX-AC-0325](#) [EMX-AC-0321](#) [EMX-AC-0316](#)