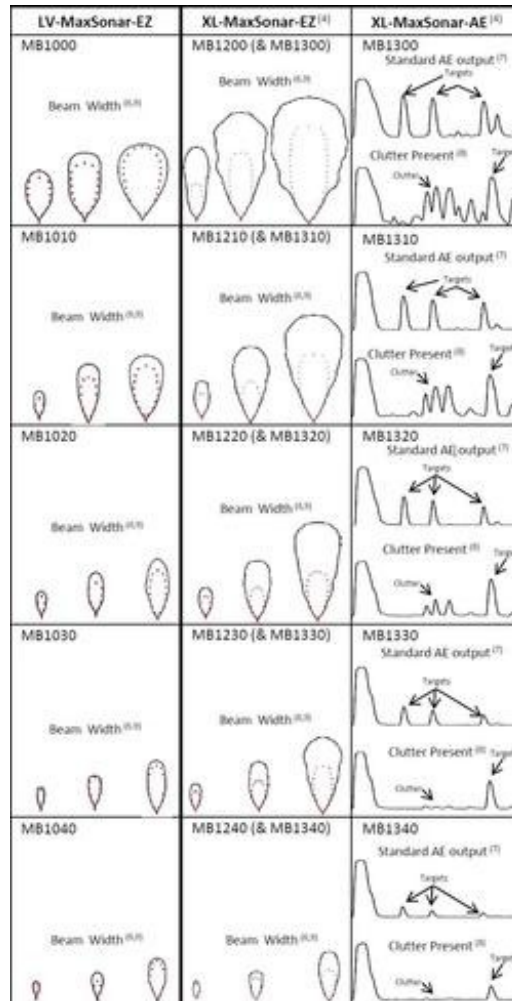


Maxbotix LV-MaxSonar-EZ1 Sonar Range Finder MB1010



MaxBotix ultrasonic sensor line comparison chart.

Overview

The Maxbotix LV-MaxSonar-EZ family of sonar range finders offers very short- to long-range detection and ranging in an incredibly small package with ultra-low power consumption. The LV-MaxSonar-EZ detects objects from 0 to 6.45 meters (21.2 feet) and provides sonar range information beyond 15 cm (6") with a resolution of 2.5 cm resolution (1 in). Objects between 0 and 15 cm range as 15 cm. The sensor provides three output interfaces, all of which are active simultaneously: digital pulse width output, analog voltage output, and asynchronous serial digital output. The LV-MaxSonar is available in five factory-calibrated beam patterns (EZ0-4).

For a higher-resolution, longer-range version, please consider the XL-MaxSonar-EZ and XL-MaxSonar-AE families of distance sensors.

Specifications and Features

- **Small and light: 0.870" x 0.785" x 0.645" (2.2 x 2.0 x 1.6 cm), 0.15 oz (4.3 g)**
- **Long range detection: 0 – 6.45 m (21.2 ft)**
- **No dead zone (detections from 0 to 6" are output as 6")**
- **Resolution of 1" (2.5 cm)**
- **Low typical current consumption: 2 mA**

- Runs on 2.5 – 5.5 V
- 42 kHz ultrasonic sensor
- 20 Hz reading rate
- Free-run or triggered operation
- Three interfaces (all are active simultaneously):
 - Serial output: asynchronous, logic-level, inverted, 9600 bps 8N1
 - Analog output: $(V_{cc}/512)$ / inch (10 mV/inch when input voltage $V_{cc} = 5$ V)
 - Pulse width output: 147 μ s/inch

Selecting the right distance sensor

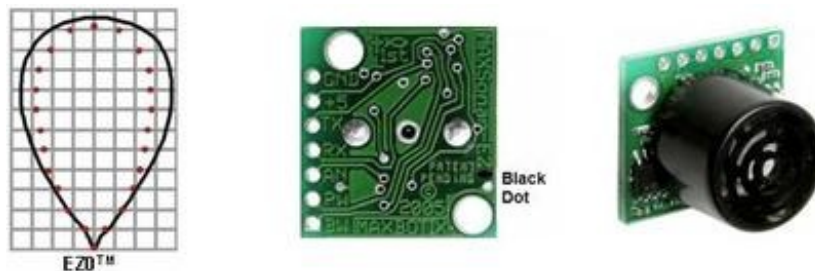
Since there are 15 members of the XL- and LV-MaxSonar acoustic distance sensor family, we recommend using the Maxbotix sonar range finder selection guide when choosing a acoustic range sensor for your application. There are 5 different beam configurations for the LV-MaxSonar family (EZ0 – EZ4), each pictured below.

LV-MaxSonar®-EZ beam patterns	EZ0™	EZ1™	EZ2™	EZ3™	EZ4™
Detection pattern to a 1/8 inch diameter dowel.					
Detection pattern to a 1/4 inch diameter dowel.					
Detection pattern to a 1 inch diameter dowel.					
Detection pattern to a 3 1/4 inch diameter dowel.					

-5V
 • 3.3V
V+ supply voltage.
 (Distances overlaid on a 1 foot grid.)

LV-MaxSonar-EZ beam patterns (range shown on 1-foot grid to various diameter dowels)

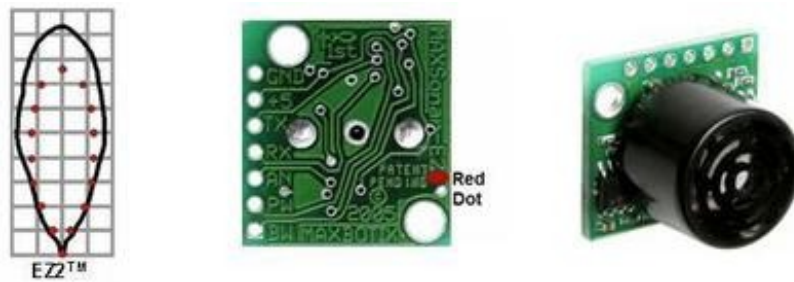
Maxbotix LV-MaxSonar-EZ0 MB1000 beam characteristics:



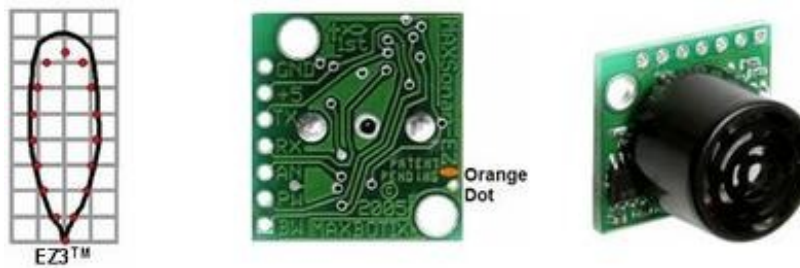
Maxbotix LV-MaxSonar-EZ1 MB1010 beam characteristics:



Maxbotix LV-MaxSonar-EZ2 MB1020 beam characteristics:



Maxbotix LV-MaxSonar-EZ3 MB1030 beam characteristics:



Maxbotix LV-MaxSonar-EZ4 MB1040 beam characteristics:



[Documentation on producer website.](#)

X-ON Electronics

Largest Supplier of Electrical and Electronic Components

Click to view similar products for [Distance Sensors](#) category:

Click to view products by [Pololu](#) manufacturer:

Other Similar products are found below :

[MAXBOTIX XL-MAXSONAR-EZ3 MB1230](#) [ZUMO 32U4 FRONT SENSOR ARRAY SEN0352](#) [SHARP GP2Y0A51SK0F TMF8701-1BM](#)
[GP2Y0AF15X](#) [MLX75026RTH-AAA-210-SP](#) [QTR-3RC](#) [QTR-L-1A](#) [QTR-L-1RC](#) [38 KHZ IR PROXIMITY SENSOR HIGH BRIGHTNE](#)
[MAXBOTIX LV-MAXSONAR-EZ3 SONAR MB1030](#) [38 KHZ IR PROXIMITY SENSOR LOW BRIGHTNES](#) [SEN0164](#) [VL53L0X TIME-](#)
[OF-FLIGHT DISTANCE SENSOR](#) [POLOLU-1134](#) [POLOLU-2489](#) [POLOLU-961](#) [DFR0315](#) [KIT0019](#) [KIT0020](#) [SEN0005](#) [SEN0006](#)
[SEN0007](#) [SEN0008](#) [SEN0153](#) [SEN0208](#) [MAXBOTIX XL-MAXSONAR-AE4 MB1340](#) [SEN0143](#) [MLX75023STF-BAA-000-TR](#) [OKY3262](#)
[OKY3263](#) [OKY3510](#) [OKY3514](#) [OKY3515](#) [MAXBOTIX XL-MAXSONAR-EZ0 MB1200](#) [MAXBOTIX XL-MAXSONAR-AE0 MB1300](#)
[QTR-HD-01RC REFLECTANCE SENSOR](#) [QTR-HD-02RC REFLECTANCE SENSOR ARRAY](#) [QTR-HD-03RC REFLECTANCE SENSOR](#)
[ARRAY](#) [QTR-HD-04RC REFLECTANCE SENSOR ARRAY](#) [QTR-HD-05RC REFLECTANCE SENSOR ARRAY](#) [QTR-HD-06RC](#)
[REFLECTANCE SENSOR ARRAY](#) [QTR-HD-07RC REFLECTANCE SENSOR ARRAY](#) [QTR-HD-09RC REFLECTANCE SENSOR](#)
[ARRAY](#) [QTR-HD-15RC REFLECTANCE SENSOR ARRAY](#) [QTR-MD-01RC REFLECTANCE SENSOR](#) [QTR-MD-02RC REFLECTANCE](#)
[SENSOR ARRAY](#) [QTR-MD-03RC REFLECTANCE SENSOR ARRAY](#) [QTR-MD-04RC REFLECTANCE SENSOR ARRAY](#)