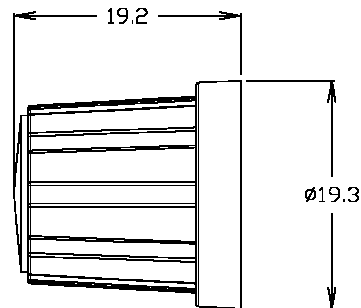
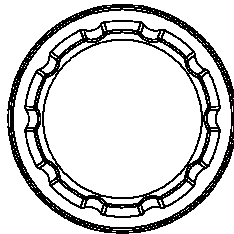
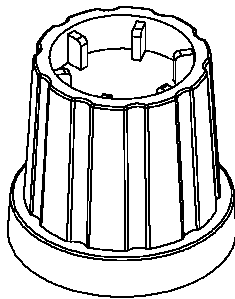


# CLIFF

## KNOB K21

Knob available in various shaft sizes and cap colours.



Shaft depth 13.8mm

Knob Details	Part No.
Knob K21 Black 4mm Screw Fix	CL178881
Knob K21 Black 6mm Splined	CL178882
Knob K21 Black 6mm D shaft	CL178883
Knob K21 Black 6mm Screw Fix	CL178884
Knob K21 Black ¼" D shaft	CL178886
Knob K21 Black ¼" Screw Fix	CL178887

Knob body and cap are supplied separately.

Caps for K21	Part No.
Black	CL1730
Black with marker line	CL1764
Black with marker dot	CL1745
White	CL1732
White with marker line	CL1766
White with marker dot	CL1746
Grey	CL1736
Grey with marker line	CL1770
Grey with marker dot	CL1750
Green	CL1742
Green with marker line	CL1776
Green with marker dot	CL1755
Yellow	CL1738
Yellow with marker line	CL1772
Yellow with marker dot	CL1752
Red	CL1734
Red with marker line	CL1768
Red with marker dot	CL1748
Blue	CL1740
Blue with marker line	CL1774
Blue with marker dot	CL1754
Orange	CL1744
Orange with marker line	CL1769
Orange with marker dot	CL1761

For further information, contact: [sales@cliffuk.co.uk](mailto:sales@cliffuk.co.uk)

**Cliff Electronic Components Limited,**  
76 Holmethorpe Avenue, Holmethorpe Ind. Estate,  
Redhill, Surrey RH1 2PF U.K.  
Tel: +44 (0)1737 771375 Fax: +44 (0)1737 766012



Visit us online at:

[www.cliffuk.co.uk](http://www.cliffuk.co.uk)



## X-ON Electronics

Largest Supplier of Electrical and Electronic Components

*Click to view similar products for [Knobs & Dials](#) category:*

*Click to view products by [Cliff](#) manufacturer:*

Other Similar products are found below :

[61-9028.20](#) [61-9028.9](#) [8529](#) [8573](#) [9-1437622-4](#) [11K5015-EMNB](#) [11K5019-ECNB](#) [11K5020-KLAB](#) [11K5028-JMNG](#) [11K5048-KMNB](#)  
[11K5014-EMNB](#) [11K5015-EMNG](#) [11K5019-EMNB](#) [11K5029-KMNG](#) [P400S-08-D6-N](#) [K6510](#) [KNSL500B1/8](#) [AL811BA18](#) [420031B18](#)  
[5006](#) [KB700BA1/4](#) [KS700B14](#) [411](#) [420065A14AL](#) [5149A](#) [52-928.20](#) [52-928.60](#) [52-928.9](#) [8517](#) [8546](#) [8570](#) [8572](#) [H-516-3A](#) [P861H-0X-S6](#)  
[8544](#) [11K5014-JMNG](#) [11K5014-KMNG](#) [11K5014-ECNG](#) [5700E](#) [KA500B18](#) [KFS600B14](#) [KN900AB14](#) [KFS500B14](#) [KNS501B18](#)  
[PKD60B1018](#) [PK1100B18](#) [PKES140B14](#) [PKES150B14](#) [PKJT70B14](#) [5002-5](#)