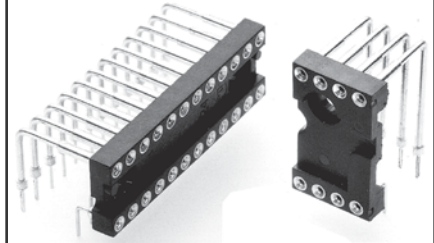


- For components to be mounted perpendicularly to the PCB, such as LED displays.
- Horizontal mount solder tails are available with either 7,62 (standard) or 2,54 row spacing.
- Series 299 use MM #1103/0903, #1103/1610 or #1103/0904 pins. See pages 135 & 136 for details.
- Hi-Rel, 4-finger BeCu #30 contact is rated at 3 amps. See page 208 for details.
- Insulators are high temperature thermoplastic.



Total number of pins	Pin Spacing (mm)			Quantity per tube	Ordering Information	
	A	B	C		E= 7,62	E= 2,54
6	7,6	7,62	10,1		299-XX-306-10-001000	299-XX-306-11-001000
8	10,1	7,62	10,1		299-XX-308-10-001000	299-XX-308-11-001000
10	12,6	7,62	10,1		299-XX-310-10-001000	299-XX-310-11-001000
12	15,2	7,62	10,1	33	299-XX-312-10-001000	299-XX-312-11-001000
14	17,7	7,62	10,1	29	299-XX-314-10-001000	299-XX-314-11-001000
16	20,3	7,62	10,1	25	299-XX-316-10-001000	299-XX-316-11-001000
18	22,8	7,62	10,1	22	299-XX-318-10-001000	299-XX-318-11-001000
20	25,3	7,62	10,1	20	299-XX-320-10-001000	299-XX-320-11-001000
24	30,4	7,62	10,1	16	299-XX-324-10-001000	299-XX-324-11-001000
8	10,1	15,24	17,7	50	299-XX-608-10-002000	
10	12,6	15,24	17,7	40	299-XX-610-10-002000	
12	15,2	15,24	17,7	34	299-XX-612-10-002000	
14	17,7	15,24	17,7	28	299-XX-614-10-002000	
16	20,3	15,24	17,7	25	299-XX-616-10-002000	
18	22,8	15,24	17,7	22	299-XX-618-10-002000	
20	25,3	15,24	17,7	20	299-XX-620-10-002000	
22	27,8	15,24	17,7	18	299-XX-622-10-002000	
24	30,4	15,24	17,7	16	299-XX-624-10-002000	
26	33,0	15,24	17,7	15	299-XX-626-10-002000	
28	35,5	15,24	17,7	14	299-XX-628-10-002000	
30	38,1	15,24	17,7	13	299-XX-630-10-002000	
32	40,6	15,24	17,7	12	299-XX-632-10-002000	
36	45,7	15,24	17,7	11	299-XX-636-10-002000	
40	50,8	15,24	17,7	10	299-XX-640-10-002000	



**XX= Plating Code
See Below**

For RoHS compliance select **◇** plating code.

SPECIFY PLATING CODE XX=			93			43 ◇	
Sleeve (Pin)			5,08µm Sn/Pb			5,08µm Sn	
Contact (Clip)			0,76µm Au			0,76µm Au	

X-ON Electronics

Largest Supplier of Electrical and Electronic Components

Click to view similar products for [IC & Component Sockets](#) category:

Click to view products by [Mill-Max](#) manufacturer:

Other Similar products are found below :

[714-43-102-31-012000](#) [0066-3-17-15-30-14-02-0](#) [0134-0-15-15-32-27-04-0](#) [614-DG5](#) [6527-0-00-15-00-00-03-0](#) [670](#) [672](#) [673](#) [712-93-120-41-001000](#) [714-93-104-31-018000](#) [8059-4G1-LF](#) [807-22-001-10-001101](#) [807-22-001-10-003101](#) [807-22-001-10-004101](#) [807-22-001-10-006101](#) [807-22-001-30-011101](#) [807-22-001-30-012101](#) [807-22-001-30-013101](#) [807-22-001-30-014101](#) [8-1437531-4](#) [8150-6P10](#) [833-93-034-10-001000](#) [835-43-014-10-001000](#) [851-41-006-10-001000](#) [851-43-008-20-001000](#) [851-43-014-20-001000](#) [851-93-006-20-001000](#) [851-93-010-20-001000](#) [852-10-026-10-001000](#) [853-43-020-10-001000](#) [86.010.0053.0](#) [116-43-306-41-003000](#) [116-43-308-41-007000](#) [116-87-308-41-007101](#) [PX-68LCC](#) [PX-84LCC](#) [121-13-318-41-001000](#) [121-13-320-41-001000](#) [121-13-308-41-001000](#) [123-43-314-41-801000](#) [123-43-420-41-001000](#) [123-43-636-41-001000](#) [123-87-320-41-001101](#) [122-13-316-41-001000](#) [123-13-624-41-001000](#) [123-43-306-41-001000](#) [123-43-322-41-801000](#) [123-43-428-41-001000](#) [123-43-624-41-001000](#) [12-3513-11](#)