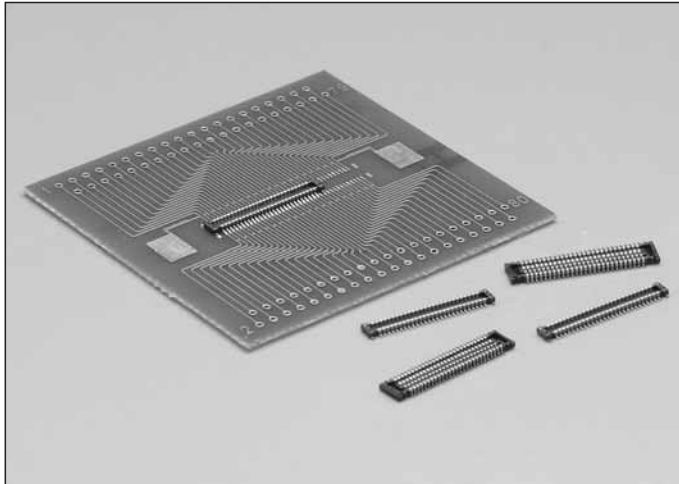


0.4_{mm}Pitch

Series 5802



| | |
|-------------------------------------|-----------------------------|
| シリーズ (Series) | 5802 |
| 基板間高さ (Stacking Height) | 0.8mm |
| 極間隔 (Pitch) | 0.4mm |
| 極数 (No. of Positions) | 10 ~ 60 |
| 定格電流 (Rated Current) | AC/DC 0.3A |
| 定格電圧 (Rated Voltage) | AC/DC 50V |
| 耐電圧 (D.W.Voltage) | AC 250Vrms/min. |
| コンタクト材質 (Contact Material) | 銅合金 Copper alloy |
| インシュレータ材質 (Insulator Material) | 耐熱樹脂 Heat-resistant plastic |
| 使用温度範囲 (Operating Temperature) | - 40 ~ 85 |

SERIES 5802

概要

5802シリーズは、携帯電話・PHS・デジタルAV機器等の急速な小型化や薄型化に対応する、0.4mmピッチの低背・省面積の基板対基板コネクタです。基板間高さ0.8mm、端子を含めた幅寸法は3.2mmを実現しました。

Outline

Series 5802 is a 0.4mm pitch, low profile, and space-efficient, Board to Board connector that responds to a surge of downsizing and slimming requirements for cellular phones, PHS, digital AV equipment and etc. 0.8mm in stacking height and 3.2mm in width including tails are realized.

特長

- (1) 基板間高さ0.8mmで端子を含めた幅寸法は3.2mmと低背・省面積タイプのコネクタです。
- (2) スリム・低背でありながらコネクタ裏面は底壁が形成されており金属の露出がなくデッドスペースが小さいことから、端子のランド対向間にパターン配線が可能であり、高密度実装に最適な構造です。
- (3) 高い接触信頼性を実現するために、接触構造は振動や落下衝撃に強い狭み込み構造を採用するとともに、接触部は飛散したフラックスや付着した異物を排除する独自接点構造を採用しました。
- (4) 嵌合構造は「FINE-LOCK構造」を採用し、低背と優れたクリック感・高い嵌合保持力との両立を実現しました。
- (5) コネクタに嵌合させ、導通、短絡を簡易にチェックするチェッカーコネクタもご用意しております。

Features

- (1) Space-efficient type connector among industry that achieves 0.8mm in stacking height and 3.2mm in width.
- (2) Because no part of pins were exposed owing to the bottom wall of the connector in spite of its slim and low profile, a pattern can be laid between lands of tail rows, which enables less limited pattern layouts on boards.
- (3) The pinching structure, highly resistant to vibration and drop shock, is adopted in contacts and the original structure excluding splashed flux or foreign matters attached is adopted on contacting points in order to obtain high contacting reliability.
- (4) "Fine locking mechanism" adopted for mating structure realizes the nice clicking response and firm retention force against unmating despite of the low profile.
- (5) A checker connector to be mated with a connector is also available to check electrical continuity or short circuit of the connector.

本カタログには推奨めっきを掲載しております。めっき種類・仕様、ならびに生産対応可能極数については営業部に御確認願います。
Recommended plating types are mentioned in this catalogue.
For other plating types and their specifications, and available numbers of positions, please feel free to contact our sales department.

0.4mm Pitch

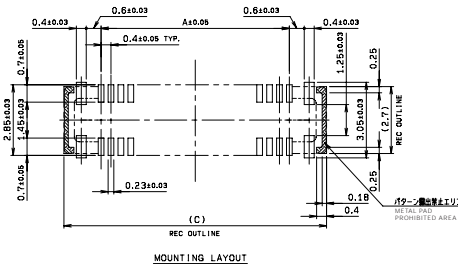
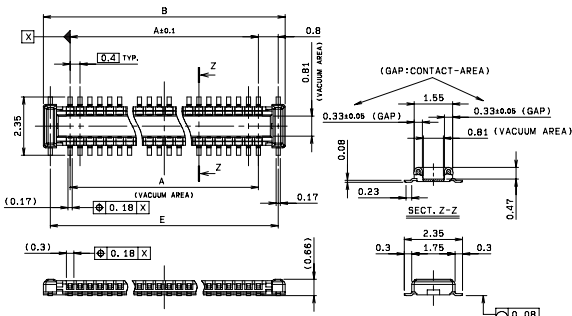
SERIES

5802

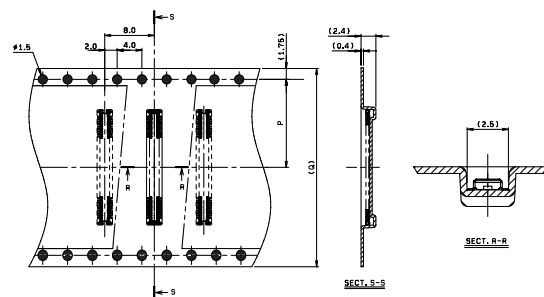
プラグ/リセ ST SMT

Plug/Receptacle Vertical SMT

Plug



| NO. OF POS. | A | B | C | E |
|-------------|------|-------|------|------|
| 10 | 1.6 | 3.76 | 4.6 | 3.2 |
| 12 | 2.0 | 4.16 | 5.0 | 3.6 |
| 14 | 2.4 | 4.56 | 5.4 | 4.0 |
| 16 | 2.8 | 4.96 | 5.8 | 4.4 |
| 18 | 3.2 | 5.36 | 6.2 | 4.8 |
| 20 | 3.6 | 5.76 | 6.6 | 5.2 |
| 22 | 4.0 | 6.16 | 7.0 | 5.6 |
| 24 | 4.4 | 6.56 | 7.4 | 6.0 |
| 26 | 4.8 | 6.96 | 7.8 | 6.4 |
| 30 | 5.6 | 7.76 | 8.6 | 7.2 |
| 32 | 6.0 | 7.96 | 9.0 | 7.6 |
| 34 | 6.4 | 8.56 | 9.4 | 8.0 |
| 40 | 7.6 | 9.76 | 10.6 | 9.2 |
| 44 | 8.4 | 10.96 | 11.4 | 10.0 |
| 50 | 9.6 | 11.76 | 12.6 | 11.2 |
| 54 | 10.4 | 12.56 | 13.4 | 12.0 |
| 60 | 11.6 | 13.76 | 14.6 | 13.2 |



| NO. OF POS. | P | Q |
|-------------|------|------|
| 10 | 5.5 | 12.0 |
| 12 | 5.5 | 12.0 |
| 14 | 7.5 | 16.0 |
| 16 | 7.5 | 16.0 |
| 18 | 7.5 | 16.0 |
| 20 | 7.5 | 16.0 |
| 22 | 7.5 | 16.0 |
| 24 | 7.5 | 16.0 |
| 26 | 7.5 | 16.0 |
| 30 | 7.5 | 16.0 |
| 32 | 7.5 | 16.0 |
| 34 | 11.5 | 24.0 |
| 40 | 11.5 | 24.0 |
| 44 | 11.5 | 24.0 |
| 50 | 11.5 | 24.0 |
| 54 | 11.5 | 24.0 |
| 60 | 11.5 | 24.0 |

注文コード ORDERING CODE

14 5802 OXX 002 829 X+

RoHS 対応品
RoHS Compliant Product

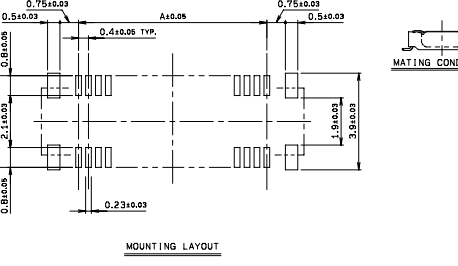
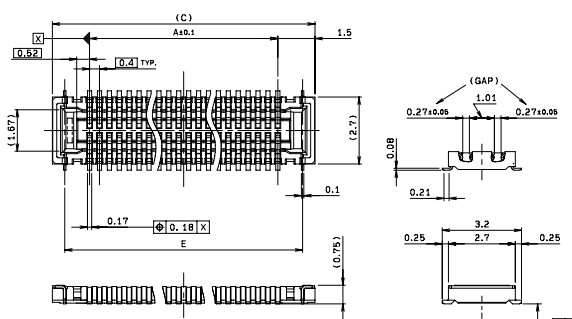
極数 Number of positions

無し: 16 - 32 Positions
K: 34 - 60 Positions

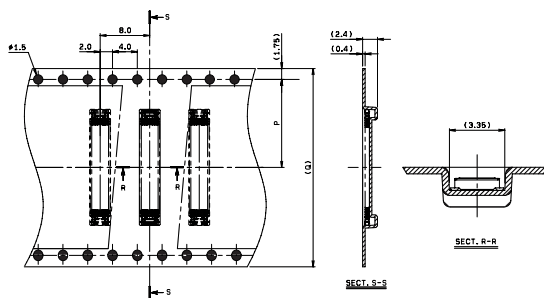
注) 生産可能極数については営業部にご確認願います。
Note) Feel free to contact our sales department for available numbers of positions.

梱包数量: 2000個/リール
PACKING QUANTITY: 2000/Reel

Receptacle



| NO. OF POS. | A | C | E |
|-------------|------|------|------|
| 10 | 1.6 | 4.6 | 3.6 |
| 12 | 2.0 | 5.0 | 4.0 |
| 14 | 2.4 | 5.4 | 4.4 |
| 16 | 2.8 | 5.8 | 4.8 |
| 18 | 3.2 | 6.2 | 5.2 |
| 20 | 3.6 | 6.6 | 5.6 |
| 22 | 4.0 | 7.0 | 6.0 |
| 24 | 4.4 | 7.4 | 6.4 |
| 26 | 4.8 | 7.8 | 6.8 |
| 30 | 5.6 | 8.6 | 7.6 |
| 32 | 6.0 | 9.0 | 8.0 |
| 34 | 6.4 | 9.4 | 8.4 |
| 40 | 7.6 | 10.6 | 9.6 |
| 44 | 8.4 | 11.4 | 10.4 |
| 50 | 9.6 | 12.6 | 11.6 |
| 54 | 10.4 | 13.4 | 12.4 |
| 60 | 11.6 | 14.6 | 13.6 |



| NO. OF POS. | P | Q |
|-------------|------|------|
| 10 | 5.5 | 12.0 |
| 12 | 5.5 | 12.0 |
| 14 | 7.5 | 16.0 |
| 16 | 7.5 | 16.0 |
| 18 | 7.5 | 16.0 |
| 20 | 7.5 | 16.0 |
| 22 | 7.5 | 16.0 |
| 24 | 7.5 | 16.0 |
| 26 | 7.5 | 16.0 |
| 30 | 7.5 | 16.0 |
| 32 | 7.5 | 16.0 |
| 34 | 11.5 | 24.0 |
| 40 | 11.5 | 24.0 |
| 44 | 11.5 | 24.0 |
| 50 | 11.5 | 24.0 |
| 54 | 11.5 | 24.0 |
| 60 | 11.5 | 24.0 |

注文コード ORDERING CODE

24 5802 OXX 002 829 S+

RoHS 対応品
RoHS Compliant Product

極数 Number of positions

注) 生産可能極数については営業部にご確認願います。
Note) Feel free to contact our sales department for available numbers of positions.

梱包数量: 3000個/リール
PACKING QUANTITY: 3000/Reel