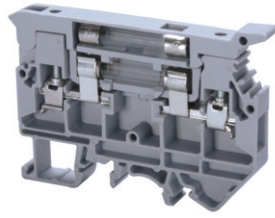


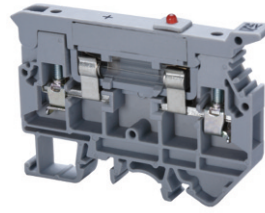
CAFL4U(L) is equipped with a LED for blown fuse indication. CAFL4U(N) is equipped with a neon bulb for same application.

CAFL4U



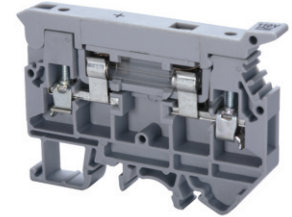
† Fuse not included.

CAFL4U(L)*



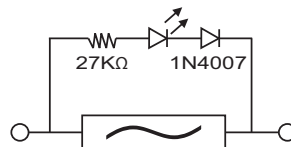
† Fuse not included.

CAFL4U(N)



† Fuse not included.

Terminal Width	9 mm			9 mm			9 mm		
Height x Length	50 x 72 mm			50 x 72 mm			50 x 72 mm		
Stripping Length	9.5 mm			9.5 mm			9.5 mm		
Insulation Material	Polyamide 6.6			Polyamide 6.6			Polyamide 6.6		
Type of Connection	2 screw clamps			2 screw clamps			2 screw clamps		
LED/Neon Voltage				24V AC/DC, 48V AC/DC, 110V AC/DC, 220V AC, 300V AC			110-220V AC/DC, 300V AC		
Type of Fuse Used	Ø1/4x1 in., Ø1/4x1 1/4 in.			Ø1/4x1 in., Ø1/4x1 1/4 in.			Ø1/4x1 in., Ø1/4x1 1/4 in.		
Approvals									
Wire Range	22-10 AWG	0.2-4 sq.mm	22-10 AWG	22-10 AWG	0.2-4 sq.mm	22-10 AWG	22-10 AWG	0.2-4 sq.mm	22-10 AWG
Voltage Rating	600 V	1000 V	600 V	600 V	1000 V	600 V	600 V	1000 V	600 V
Current Rating	16 A	6.3 A	16 A	16 A	6.3 A	16 A	16 A	6.3 A	16 A
Torque	7 lb-in	0.5 Nm	7 lb-in	7 lb-in	0.5 Nm	7 lb-in	7 lb-in	0.5 Nm	7 lb-in
Other Approvals									
Terminal Block	Cat. No.	Std. Pk.		Cat. No.	Std. Pk.		Cat. No.	Std. Pk.	
	CAFL4U	25		CAFL4U(L)*	25		CAFL4U(N)	25	
End Plate	EPCAFL4U	50		EPCAFL4U	50		EPCAFL4U	50	
DIN Rail for ordering information refer to pages 90-91									
End Stop for ordering information refer to page 92	CA702	50		CA702	50		CA702	50	
	CA802	50		CA802	50		CA802	50	
External Jumper	2 pole	CA716/2	50	CA716/2	100	CA716/2	100	CA716/2	100
	3 pole	CA716/3	50	CA716/3	50	CA716/3	50	CA716/3	50
	4 pole	CA716/4	50	CA716/4	50	CA716/4	50	CA716/4	50
	10 pole	CA716/10	25	CA716/10	20	CA716/10	20	CA716/10	20
Marking Tags	MT9	100		MT9	100		MT9	100	



LED Circuit for offline indication in CAFL4UL24V